

NO.	STATION	DESCRIPTION	ELEVATION
1	8+14	60d NAIL IN 6" ELM	33.3'RT. 1447.63
2	9+71	60d NAIL ATOP S.W. BRIDGE ABUT. (P-35-16)	25.7'RT. 1451.58
3	205+74	WISDOT DISC ATOP S.W. WING WALL (B-35-99)	15.4'RT. 1460.62

STATE PROJECT NUMBER  
9864-03-70

SHEET NO  
5.0

PLAN AND PROFILE  
SPIRIT FALLS AVENUE LINCOLN COUNTY

LEGEND

----- RIPRAP

----- SILT FENCE

----- TURBIDITY BARRIERS

CURVE DATA

P.I. = STA. 9+71.34

$\Delta$  = 22°

D = 6°30'

T = 171.34

L = 338.46

R = 881.47

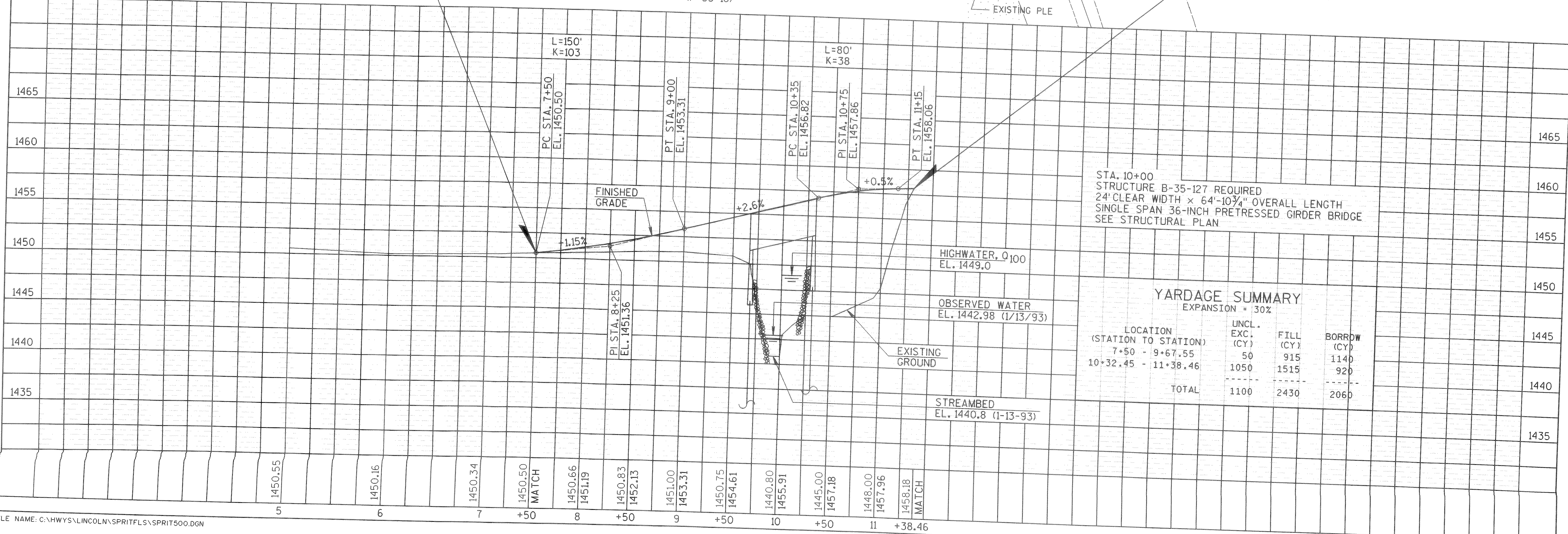
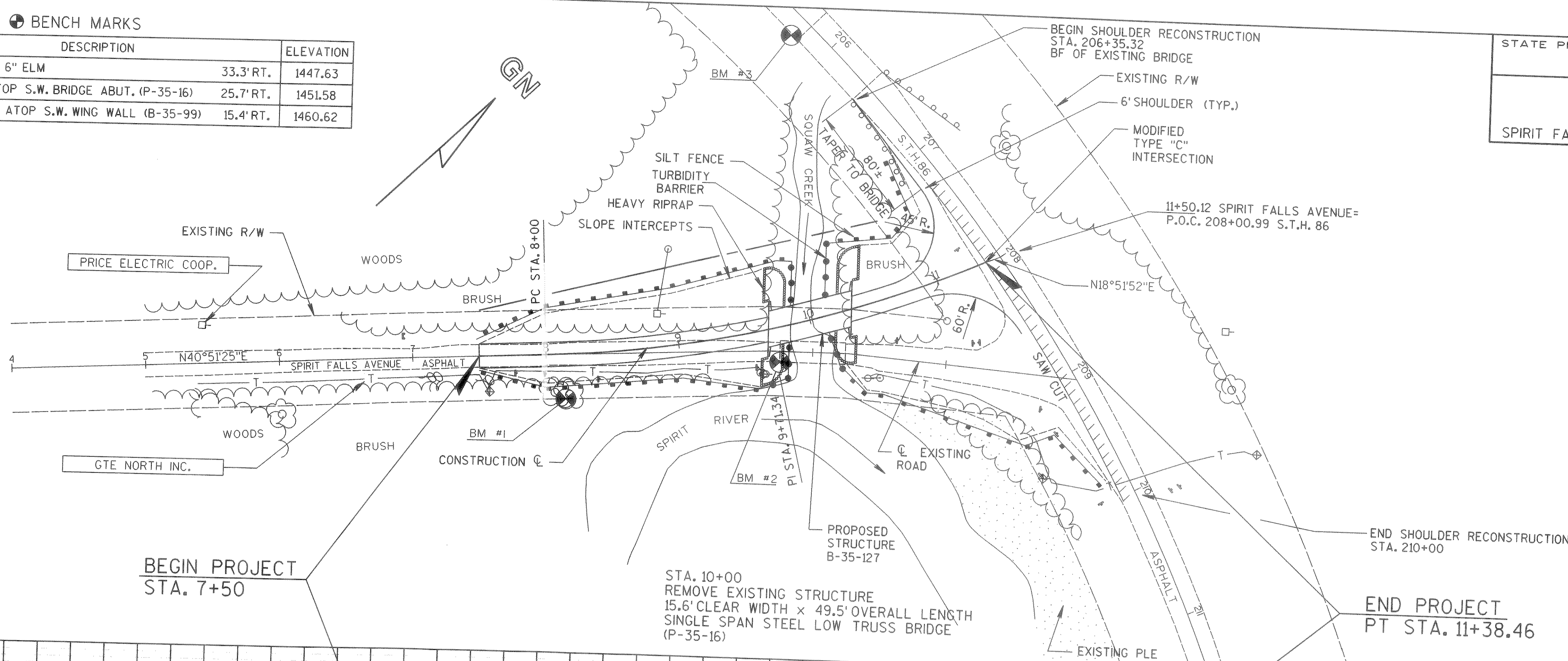
LC = 336.39'

M = 16.20

SE = NC

P.C. = STA. 8+00

P.T. = STA. 11+38.46



YARDAGE SUMMARY  
EXPANSION = 30%

LOCATION (STATION TO STATION)	UNCL. EXC. (CY)	FILL (CY)	BORROW (CY)
7+50 - 9+67.55	50	915	1140
10+32.45 - 11+38.46	50	1515	920
TOTAL	1100	2430	2060