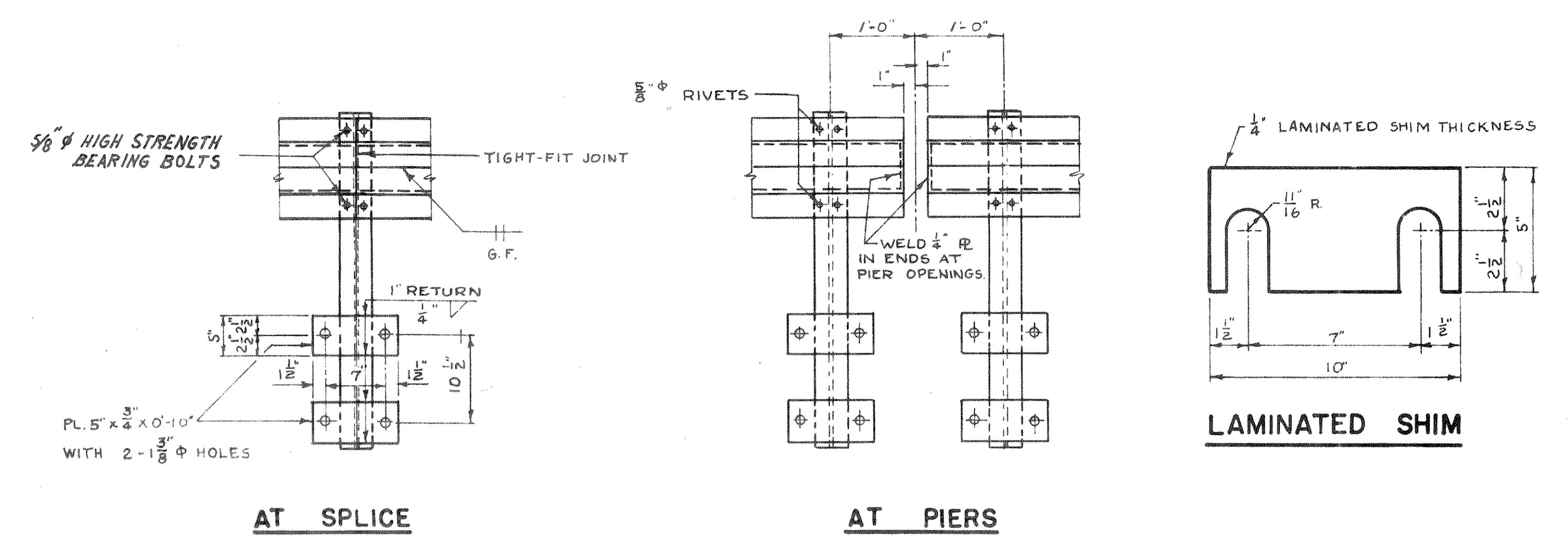


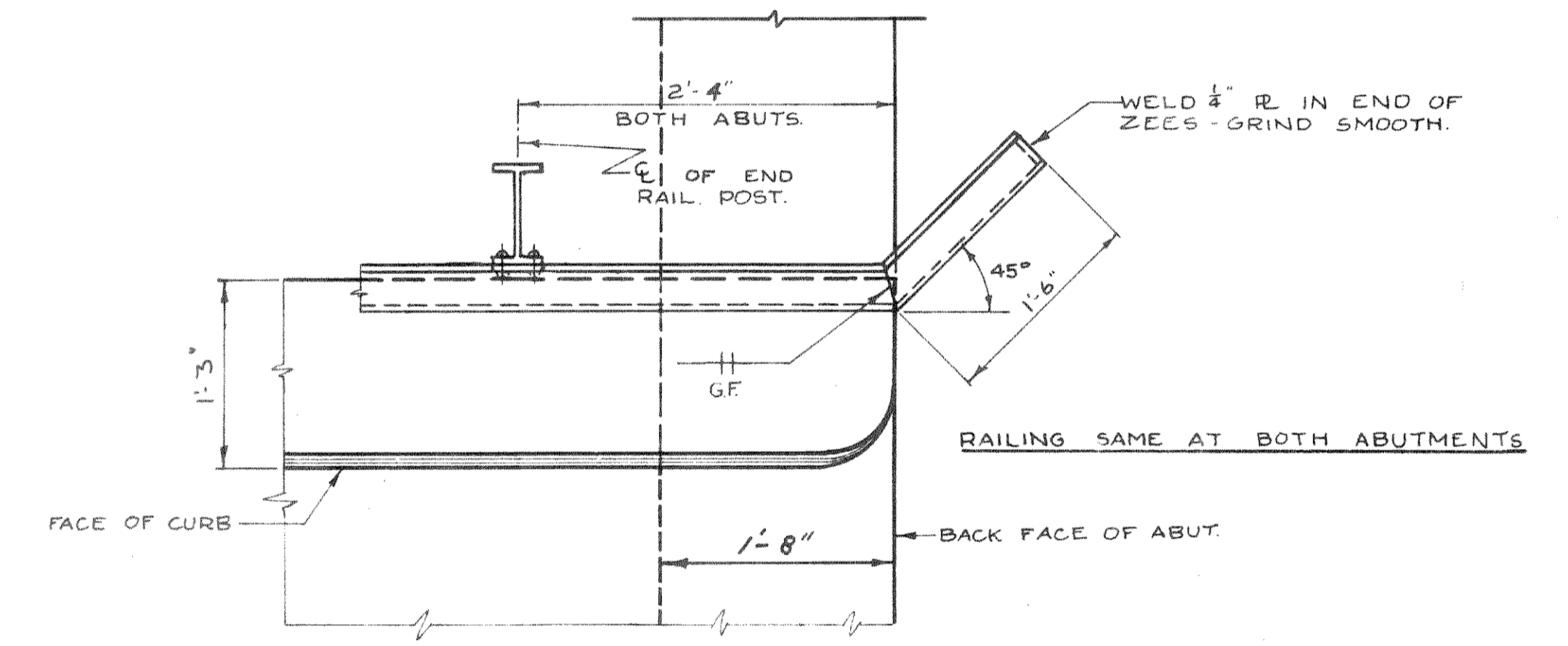
SECTION EI

EXPANSION JOINT DETAILS

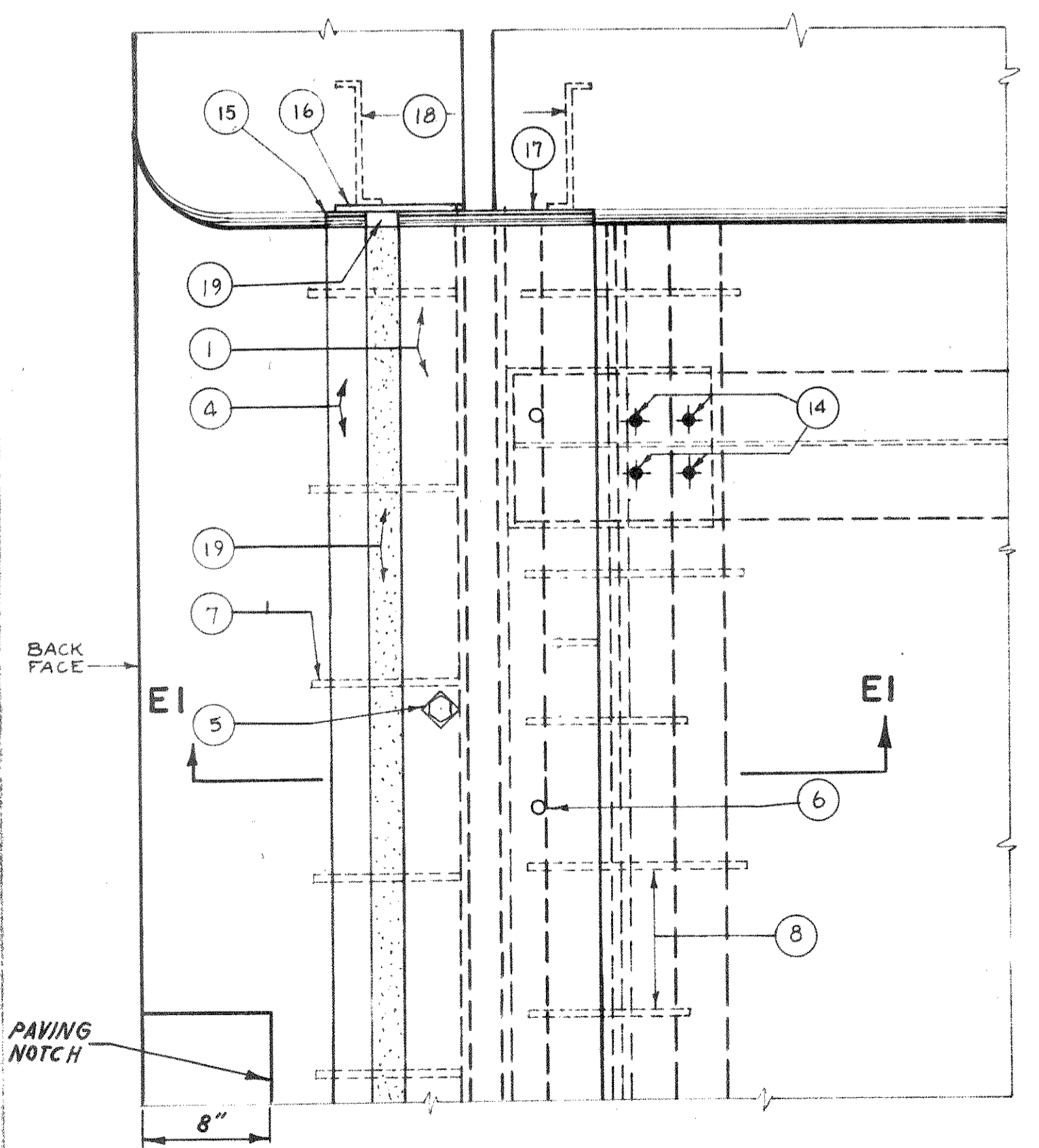
* 2" OPENING @ 60°F. REMOVE BOLTS (#5 LEGEND) IMMEDIATELY AFTER CONCRETE HAS SET & FILL HOLES WITH HOT POURED ELASTIC TYPE JOINT SEALER.



RAILING DETAILS



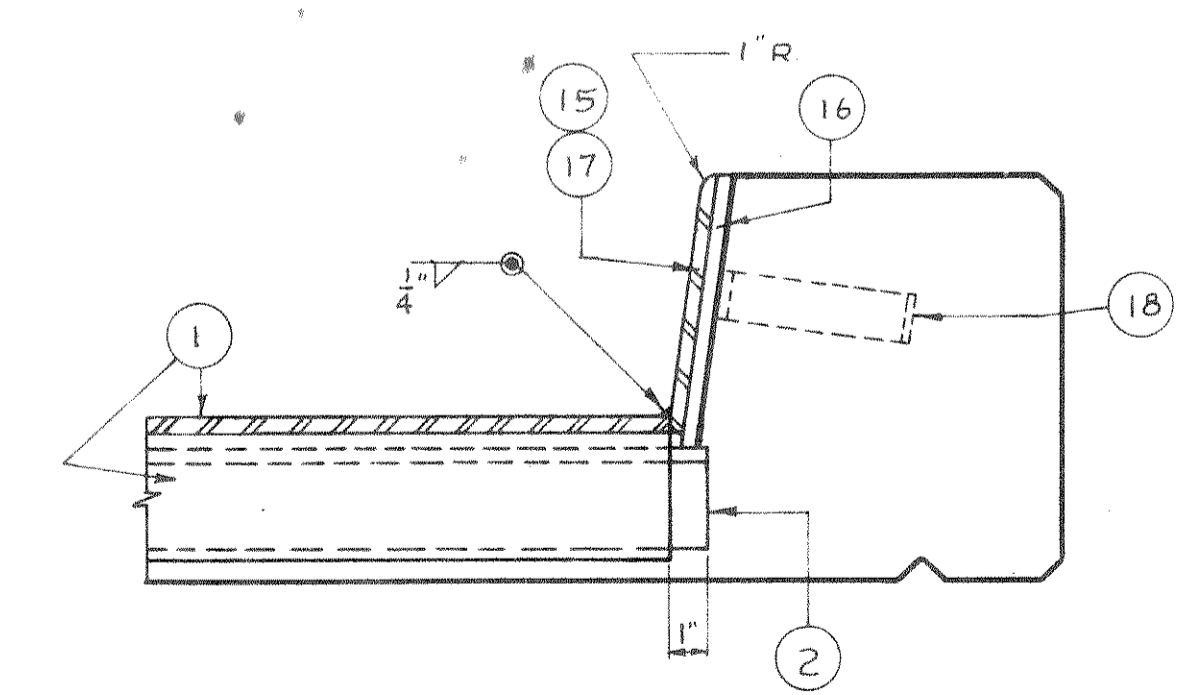
PART PLAN AT SOUTH ABUTMENT



PART PLAN

LEGEND

- * 1. S.T. 6" WF 39.5# x 30'-0" (EXP TEE)
 - * 2. L 6" x 4" x 1/2" x 30'-2"
 - * 3. BAR 2" x 3/4" x 30'-0" WELD TO L#2 WITH 2 LINES 1/4" FILLET WELD 2@6.
 - * 4. BAR 2 1/2" x 1 1/2" x 30'-0"
 - 5. 1/2" BOLT WITH SQ. NUT @ 2'-0" CTRS. GREASE FOR EASY REMOVAL. 1 1/2" x 1 1/4" SLOTTED HOLE IN EXP. TEE. LONG DIMENSIONS OF HOLE PARALLEL TO C OF RDWY.
 - 6. 1 1/2" VENT HOLES @ 2'-0" CTRS.
 - 7. 1 1/2" BENT BAR @ 1'-0" CTRS. WELD TO L#2.
 - 8. 1 1/2" BENT BAR @ 3' ALT CTRS. BETWEEN STRINGERS. WELD TO S.T.#1.
 - 9. 1 1/2" HOLES @ 3'-0" CTRS. BLOCK & BOLT FOR SHIPMENT WITH PIPE SLEEVE.
 - 10. S.T. 5" WF 24.5# 1/4" FILLET WELD TO FLANGE & STEM OF EXP. TEE - N.S. & F.S.
 - 11. 1/8" MINIMUM LAMINATED SHIM.
 - 12. L 3" x 2 1/2" x 3/8" x 0'-3" @ 3'-0" CTRS. WELD TO L#2.
 - 13. 3/8" ADJUSTING BOLT WELD NUT TO L 3" x 2 1/2" x 3/8" @ 3'-0" CTRS.
 - 14. HOLES FOR 2 1/2" ERECTION BOLTS. DRILL HOLES IN STRINGER FLANGE IN FIELD.
 - * 15. R 2 1/2" x 3/8" WELD TO R #16. & BAR #4.
 - * 16. R 8" x 3/8"
 - * 17. R 12 1/2" x 3/8" WELD TO #1
 - 18. ANCHOR BAR 2" x 1/2" x 1'-0" WELD TO R #16 & R #17.
 - 19. AFTER CONCRETE HAS SET, FILL JOINT WITH HOT POURED ELASTIC TYPE JOINT SEALER. APPLY ONE COAT OF BITUMASTIC 1/16" THICK TO THIS SURFACE.
 - 20. #4 BAR, BENT, 3 PER C WELD TO C.
- ALL ITEMS MARKED WITH ASTERISK SHALL BE MADE OF CORTEN, MAYARI R OR OTHER STEEL OF EQUAL CORROSIVE RESISTANCE. STEEL IN EXPANSION JOINT SHALL BE PAID FOR AS "STRUCTURAL LOW ALLOY STEEL."



CURB DETAIL

EXPANSION JOINT SHALL BE BUILT TO CONFORM TO ROADWAY CROWN AND GRADE.