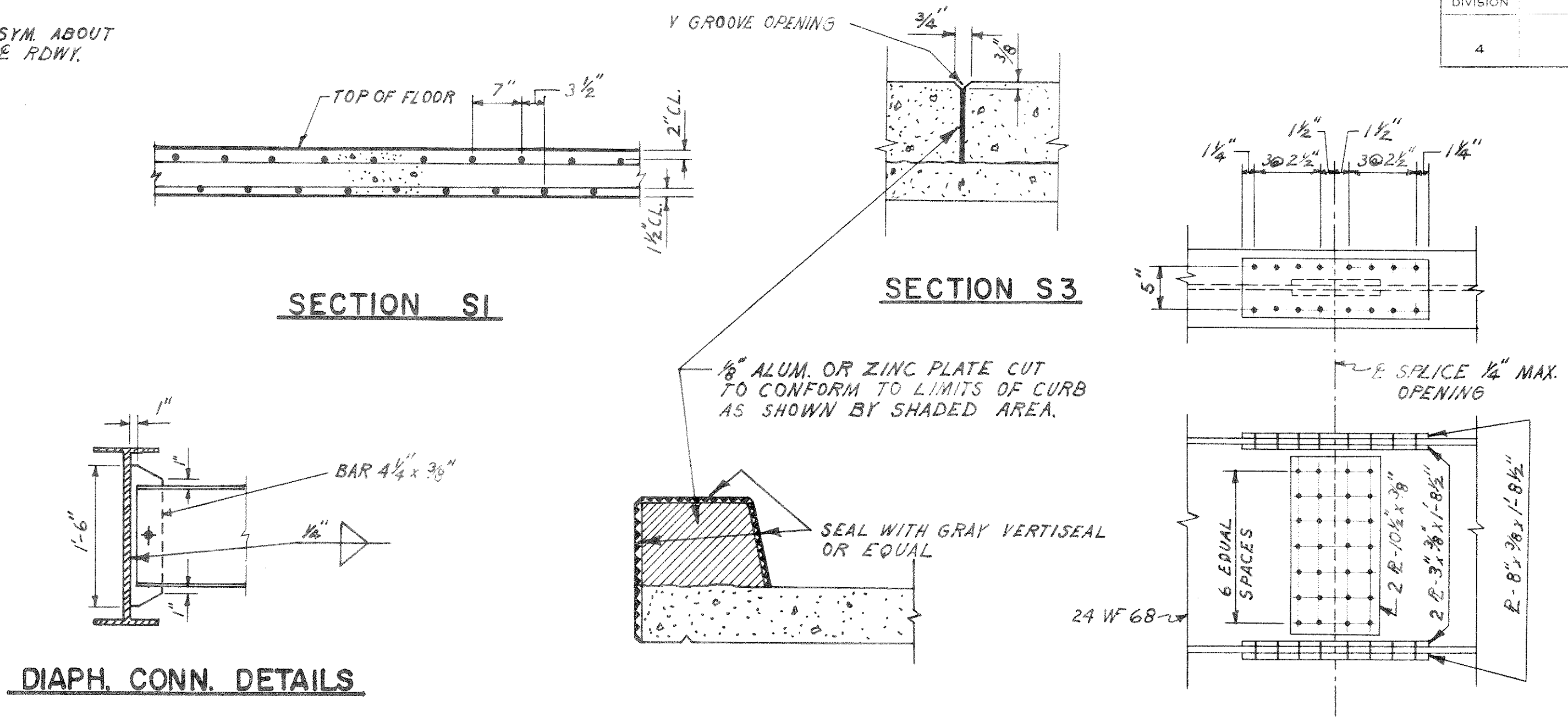


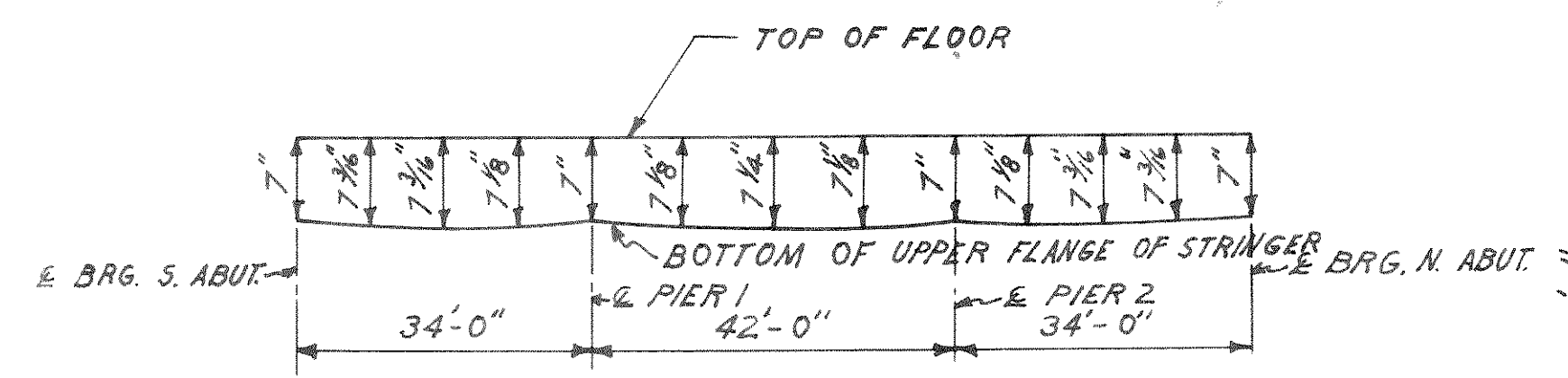
HALF CROSS SECTION THRU ROADWAY
 TOP OF CURB TO BE BUILT TO ESTABLISHED GRADE AFTER SPAN HAS TAKEN DEAD LOAD DEFLECTION. THE 10" HEIGHT OF CURB IS TO BE MAINTAINED AT POINTS OF BEARINGS.



DIAPH. CONN. DETAILS

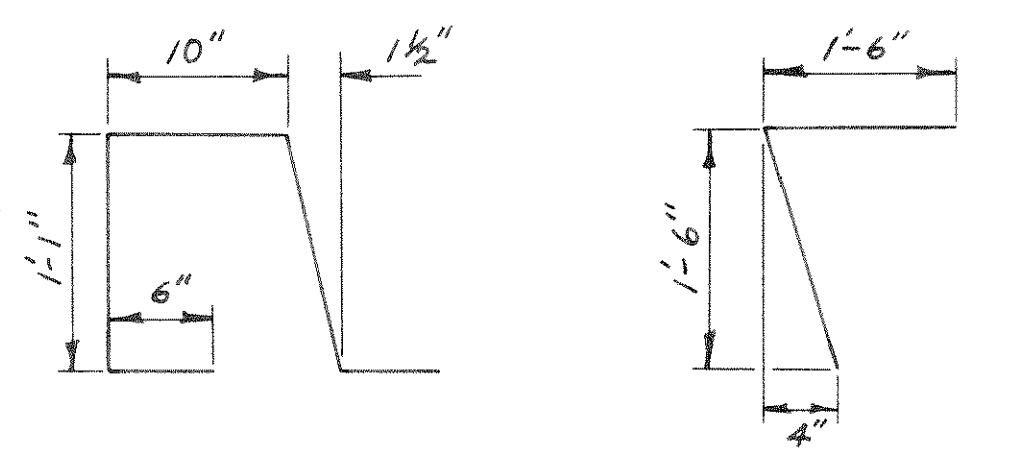
SECTION S2
 (SHOWING DEFLECTION JOINT IN CURB AT PIERS)

SPLICE DETAIL



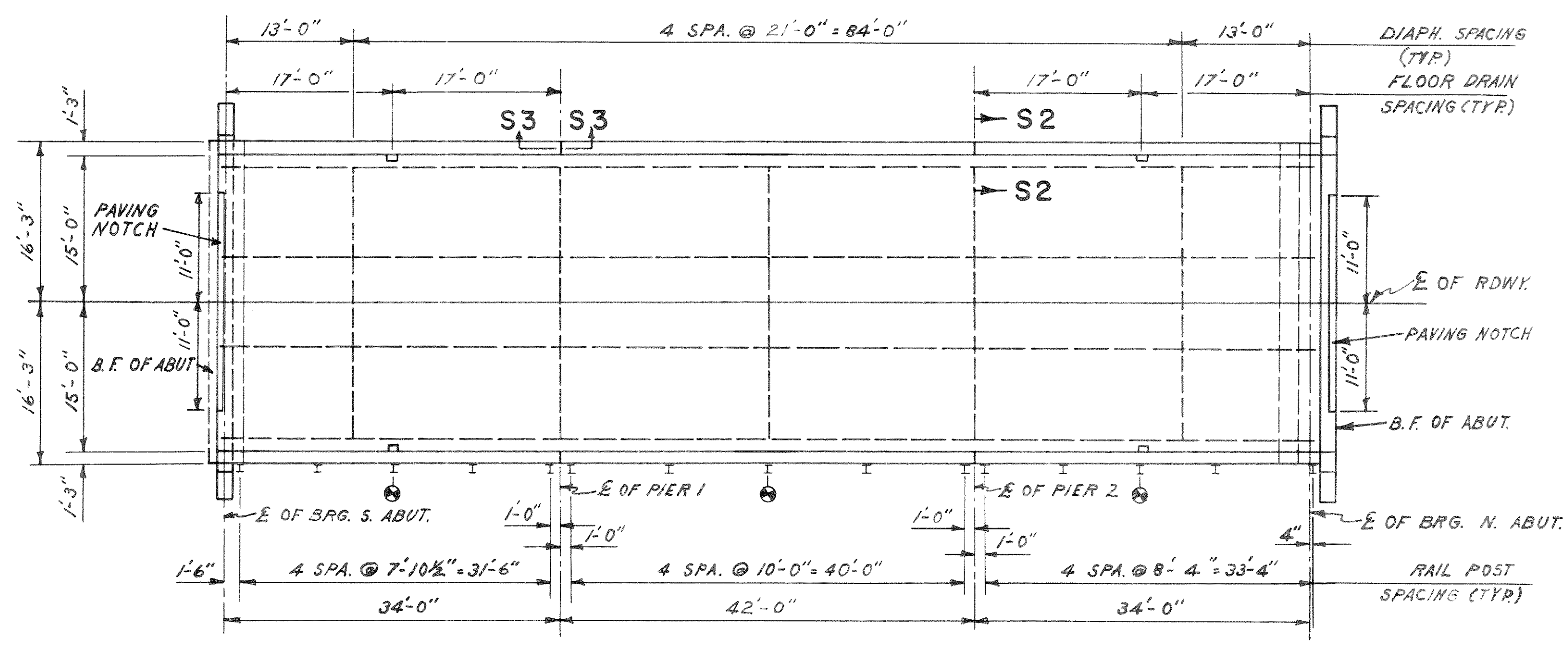
FORMING DIAGRAM

SLAB THICKNESSES SHOWN ARE THEORETICAL AND MAY NEED TO BE CHANGED TO COMPENSATE FOR VARIATION IN STRINGERS AND OTHER CONSTRUCTION DISCREPANCIES.



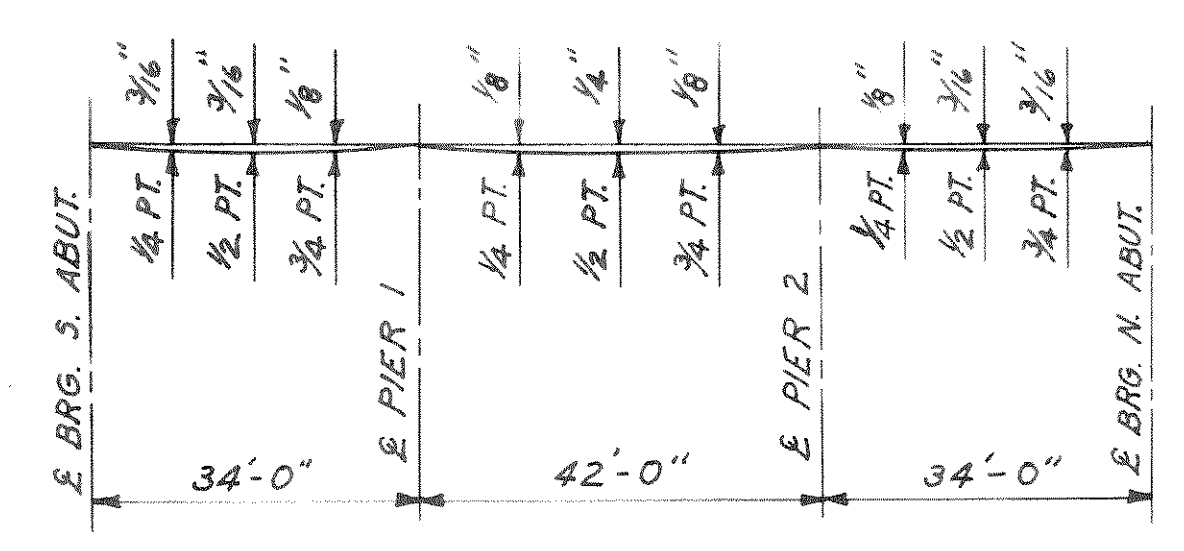
DETAIL A

DETAIL B



PLAN

⊙ DENOTES PERMISSIBLE FIELD SPLICE IN RAILING



DEFLECTION DIAGRAM

BILL OF BARS

28,360#

DIMENSIONS IN BENDING DETAILS ARE OUT TO OUT

POUR MARK	NO.	SIZE	LENGTH	SPACING	LOCATION	DET.
S1	377	6	32-0	7	SLAB-TRANS.	
S2	160	5	28-6	7	" - LONG - BOTTOM	
S3	100	5	28-6	1-2	" - " - TOP	
S4	16	5	15-0	8	" - (SYM. ABT. E OF PIERS)	
S5	60	6	4-6	SHOWN	" - CURB (SYM. ABT. E OF POST)	
S6	224	5	4-3	1-0	" - " - VERT.	A
S7	3	4	8-9	SHOWN	DIAPH. AT ABUT. (NORTH)	
S8	18	5	3-0	1-6	" - " - " - " - " - B	
S9	16	6	17-6	SHOWN	CURB - LONG. SPAN 1/3	
S10	8	6	21-6	"	" - " - " - " - 2	
S11	54	5	2-0	1-0	SLAB AT ABUT. (SOUTH)	