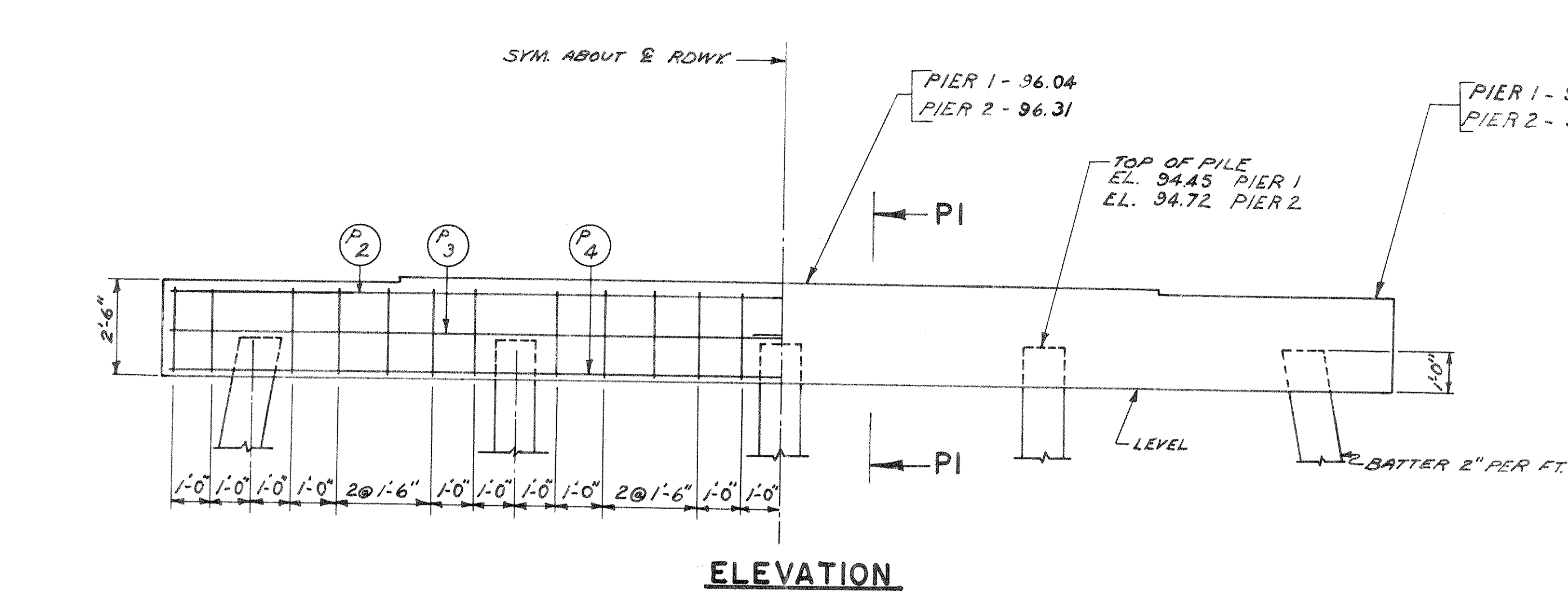


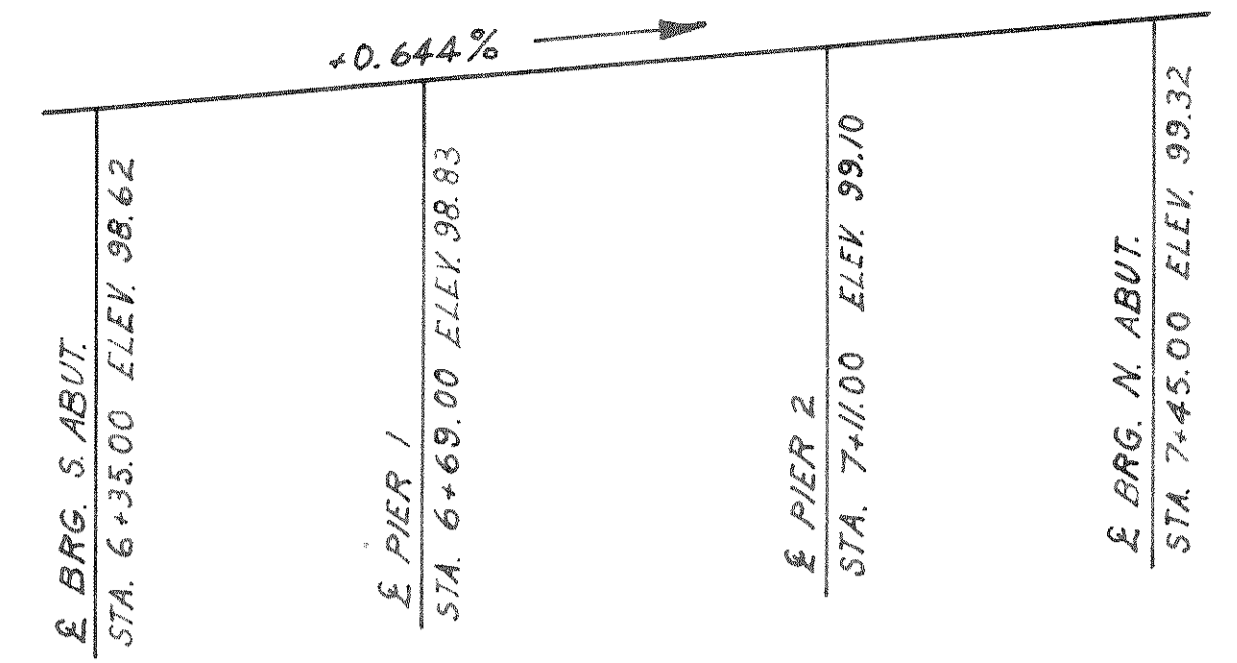
35.6 0.0 3.7

**BENCH MARK**

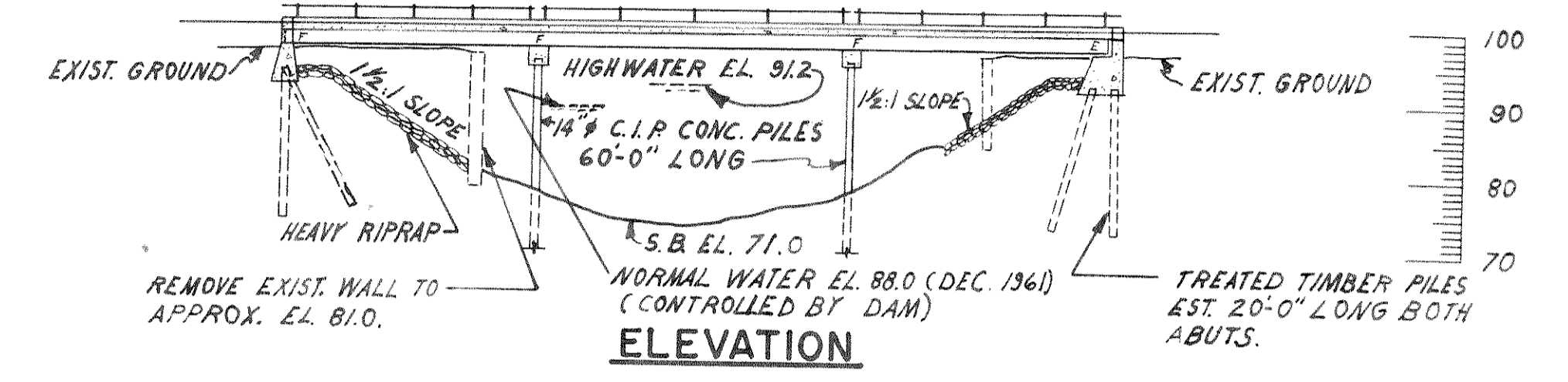
| NO. | STA. | DESCRIPTION                | ELEV.  |
|-----|------|----------------------------|--------|
| 2   | 8+70 | SPIKE IN 18" ELM. 115' LT. | 108.38 |



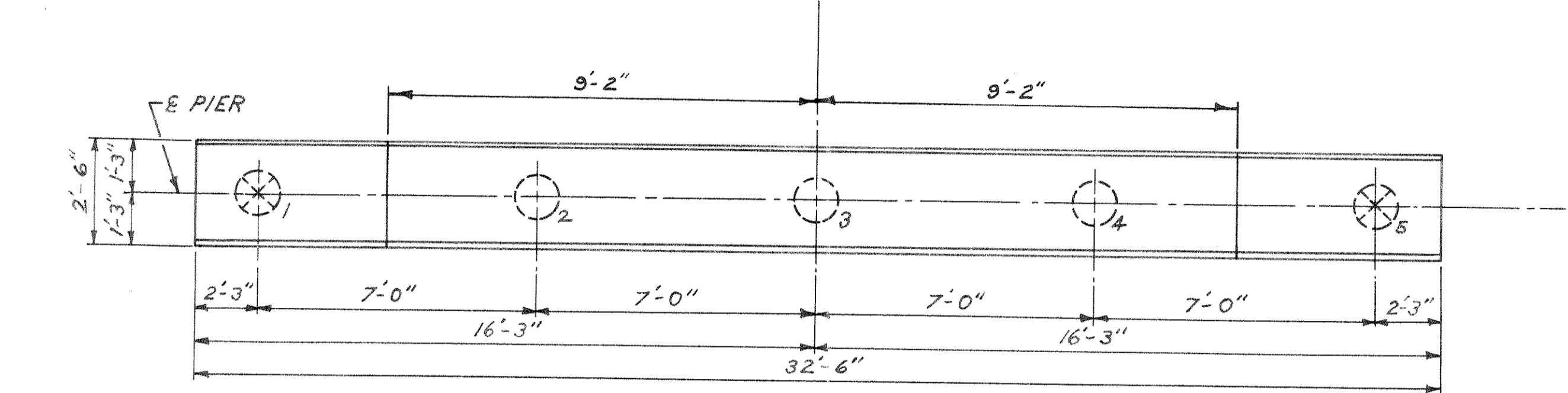
**ELEVATION**



**PROFILE**  
C.T.H. "0"



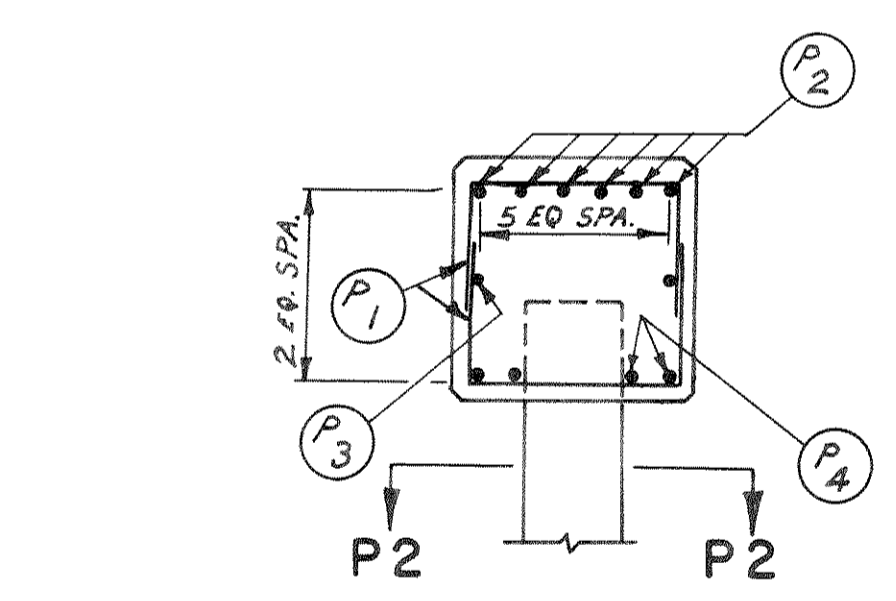
**ELEVATION**



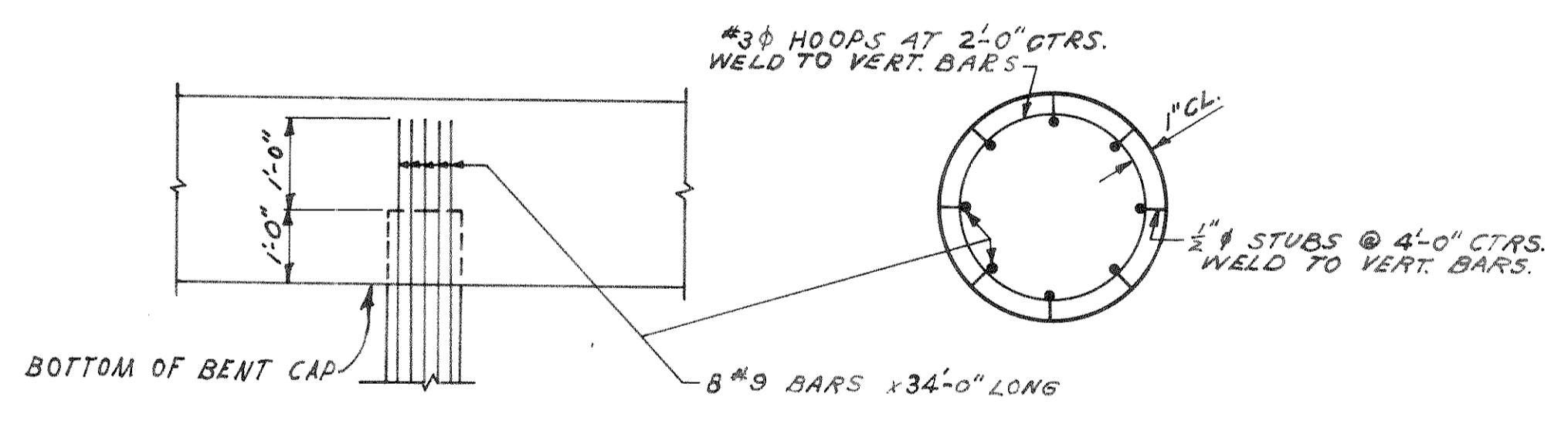
**PLAN**  
(LOOKING NORTH)

**GENERAL NOTES**  
 DRAWINGS SHALL NOT BE SCALED.  
 ALL CONCRETE MASONRY SHALL BE GRADE "AA"  $f_c = 1400$  PSI.  
 BEVEL EXPOSED EDGES OF CONCRETE 1" UNLESS OTHERWISE SPECIFIED.  
 BAR STEEL REINFORCEMENT SHALL BE IMBEDDED 2" CLEAR UNLESS OTHERWISE SHOWN OR NOTED.  
 THE USE OF STRUCTURAL GRADE BAR STEEL REINFORCEMENT IS PROHIBITED.  
 PILING AT THE ABUTMENTS SHALL BE TREATED TIMBER PILES 20'-0" LONG ESTIMATED, AND DRIVEN TO A MINIMUM BEARING VALUE OF 10 TONS PER PILE.  
 PILING AT PIERS SHALL BE 14"  $\phi$  CAST-IN-PLACE CONCRETE PILES 60'-0" LONG, AND DRIVEN TO A MINIMUM BEARING VALUE OF 40 TONS PER PILE.  
 ALL FIELD CONNECTIONS SHALL BE  $\frac{3}{4}$ "  $\phi$  HIGH TENSILE STRENGTH BOLTS.  
 "EXCAVATION FOR STRUCTURES" HAS BEEN COMPUTED FROM THE ORIGINAL GROUND LINE. SEE SHEETS X24899 & X24900 FOR LIMITS OF EXCAVATION.

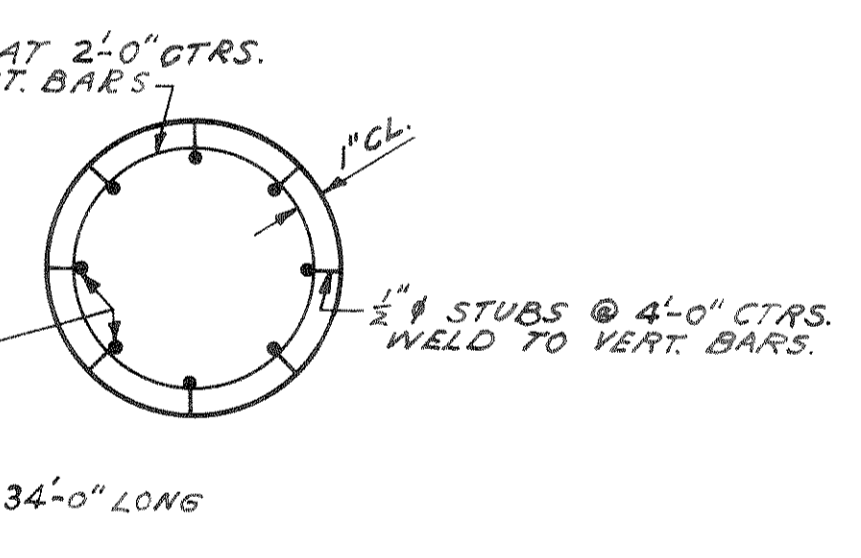
X DENOTES BATTERED PILE



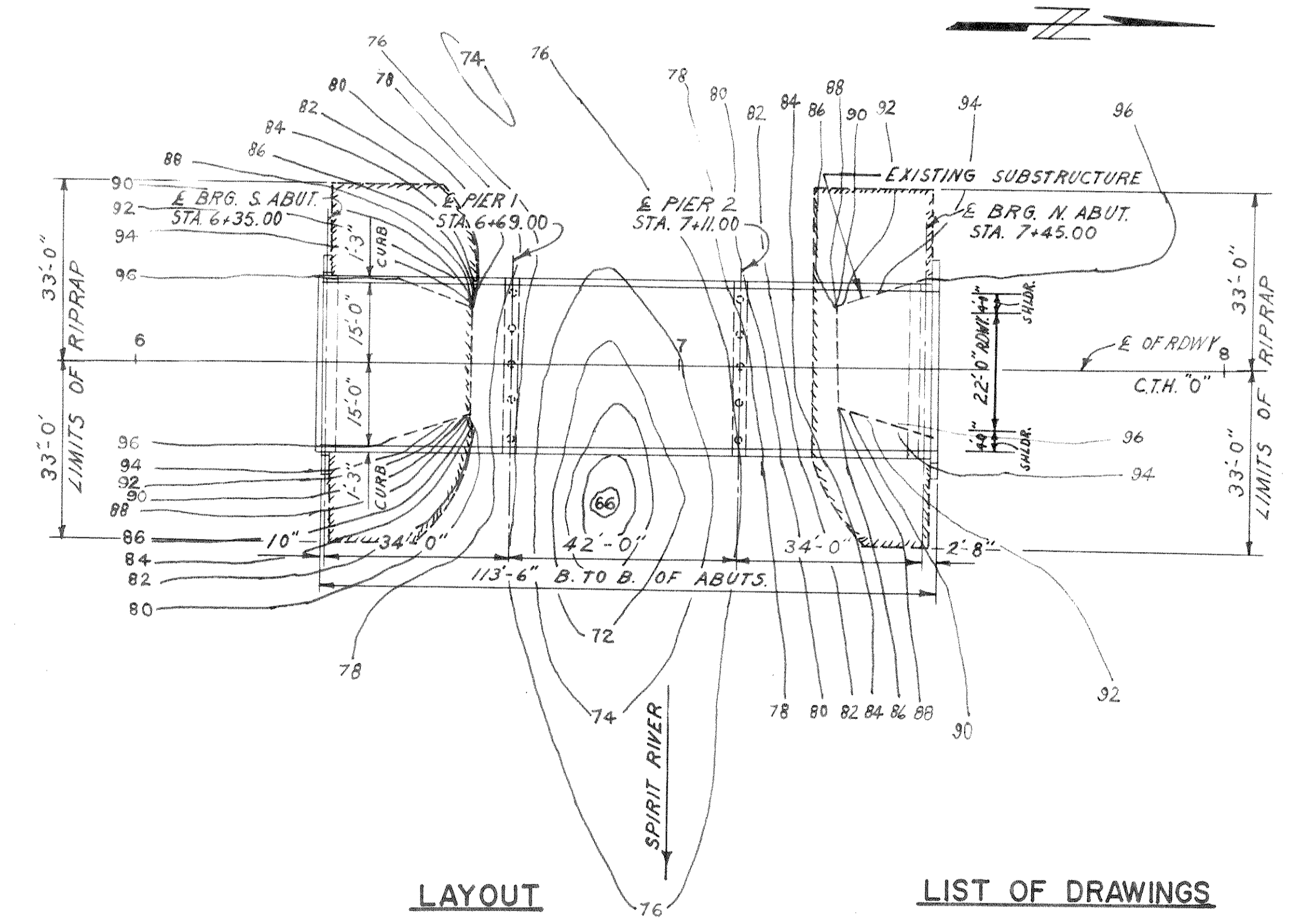
**SECTION P1**



**PILE DETAIL**



**SECTION P2**



**LAYOUT**

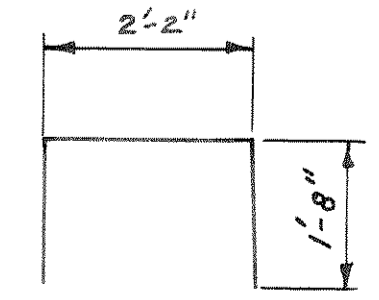
**LIST OF DRAWINGS**

|                              |         |
|------------------------------|---------|
| 1. LAYOUT & PIERS            | X 24894 |
| 2. SUPERSTRUCTURE            | X 24895 |
| 3. LONG SECTION & BEARINGS   | X 24896 |
| 4. EXPANSION JOINT & RAILING | X 24897 |
| 5. FLOOR DRAINS              | X 24898 |
| 6. SOUTH ABUTMENT            | X 24899 |
| 7. NORTH ABUTMENT            | X 24900 |

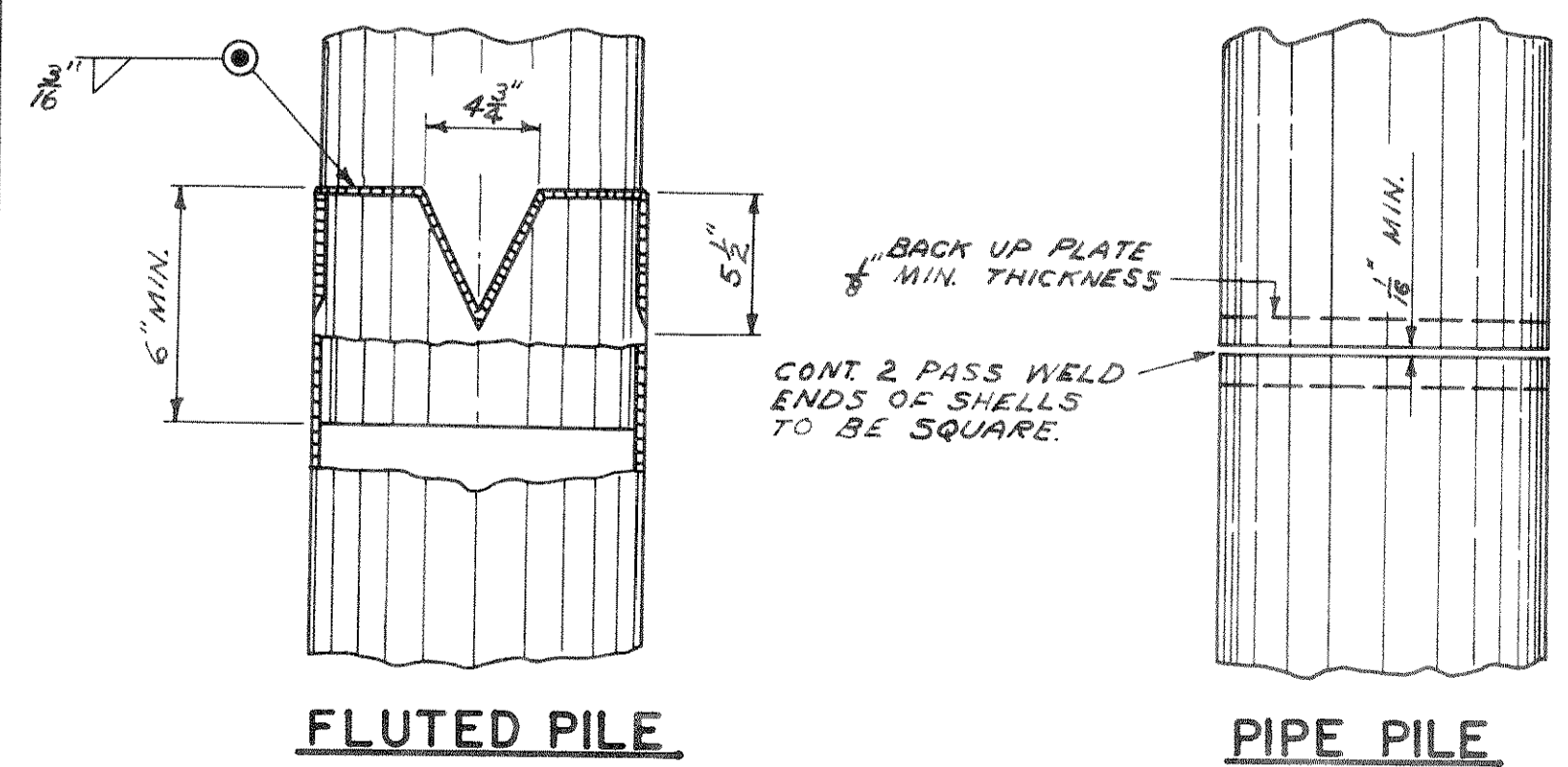
**BILL OF BARS**

DIMENSIONS IN BENDING DETAILS ARE OUT TO OUT. 1110#

| POUR | MARK | NO. | SIZE | LENGTH | SPACING | LOCATION            | DET. |
|------|------|-----|------|--------|---------|---------------------|------|
| P1   | 36   | 4   | 5-6  | SHOWN  |         | PIER CAP - STIRRUPS | A    |
| P2   | 12   | 5   | 32-0 | "      | "       | " TOP               |      |
| P3   | 8    | 4   | 16-6 | "      | "       | " SIDES             |      |
| P4   | 8    | 5   | 32-0 | "      | "       | " BOTTOM            |      |



**DETAIL A**



**FLUTED PILE**

**PIPE PILE**

**PILE SPLICE DETAIL**

**ESTIMATED QUANTITIES**

| BID ITEMS                                 | UNIT | SUPER. | SOUTH ABUT. | PIER 1 | PIER 2 | NORTH ABUT. | TOTAL |
|---|------|--------|-------------|--------|--------|-------------|-------|
| REMOVING OLD BRIDGE                       | L.S. |        |             |        |        |             | 1     |
| EXCAVATION FOR STRUCTURES                 | C.Y. |        | 55          |        |        | 60          | 115   |
| CONCRETE MASONRY                          | C.Y. | 90.2   | 19.8        | 7.7    | 7.7    | 39.2        | 164.6 |
| BAR STEEL REINFORCEMENT                   | L.B. | 28360  | 870         | 555    | 555    | 1270        | 31610 |
| STRUCTURAL CARBON STEEL                   | L.B. | 36000  |             |        |        |             | 36000 |
| * UNTREATED TIMBER TEST PILING            | L.S. |        |             |        |        |             | 1     |
| TREATED TIMBER PILING - DELIVERED         | L.F. |        | 200         |        |        | 200         | 400   |
| TREATED TIMBER PILING - DRIVEN            | L.F. |        | 200         |        |        | 200         | 400   |
| CAST-IN-PLACE CONCRETE PILING - DELIVERED | L.F. |        |             | 300    | 300    |             | 600   |
| CAST-IN-PLACE CONCRETE PILING - DRIVEN    | L.F. |        |             | 205    | 205    |             | 410   |
| STEEL RAILING                             | L.F. | 233    |             |        |        |             | 233   |
| BEARING PADS                              | S.F. | 11.2   |             |        |        |             | 11.2  |
| LUBRICATED BRONZE PLATES                  | L.B. | 28.0   |             |        |        |             | 28.0  |
| HEAVY RIPRAP                              | C.Y. |        | 140         |        |        | 90          | 230   |
| FLOOR DRAINS                              | E.A. | 4      |             |        |        |             | 4     |
| STRUCTURAL LOW ALLOY STEEL                | L.B. | 3500   |             |        |        |             | 3500  |
| NON BID ITEM - FILLER                     | SIZE | 1/2"   |             |        |        |             | 1/2"  |

\* DRIVE ONE 35'-0" UNTREATED TEST PILE AT EACH ABUTMENT

STATE HIGHWAY COMMISSION OF WISCONSIN  
**LAYOUT & PIERS**  
 CO. LINCOLN TN. TOMAHAWK STA. 6+90.00  
 SECTION 8 & 9 TOWN 34 N RANGE 5E  
 DESIGN BY AASHO. 1961 LOADING H-15 CONST. SPEC. 1957  
 DATE 3-16-62 DESIGNED BY J.B. DRAWN L.V.G. CHD. DEP.  
 SUBMITTED BY H. B. Schultz  
 APPROVED BY E. C. Rutzler  
 STATE HIGHWAY ENGINEER