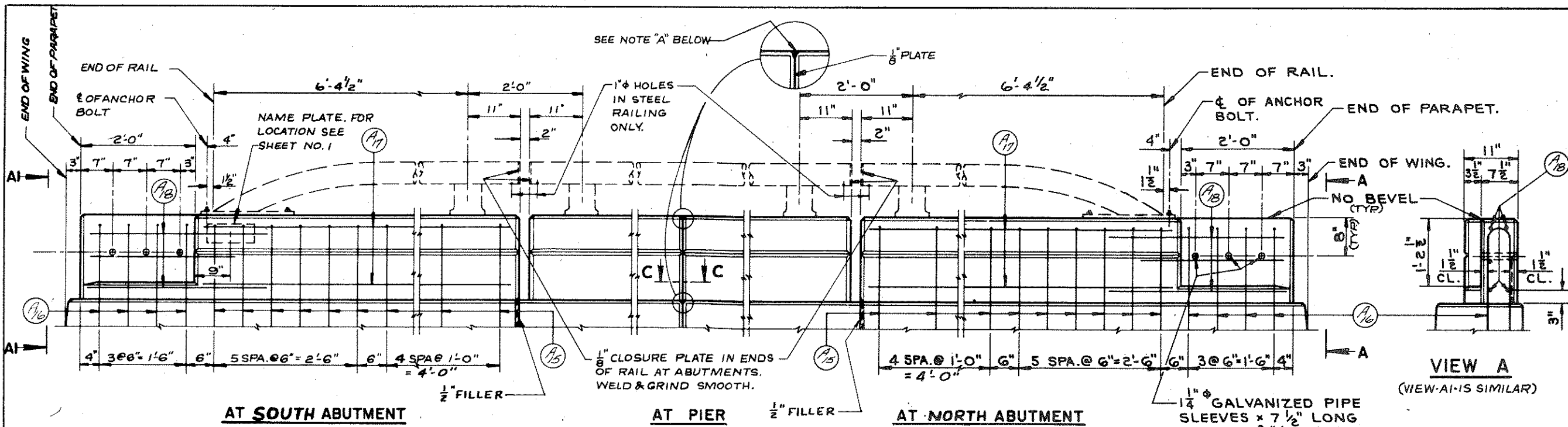
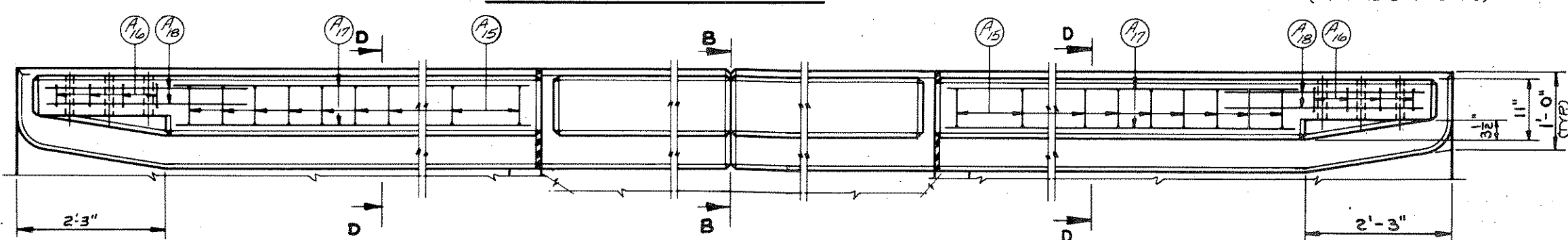
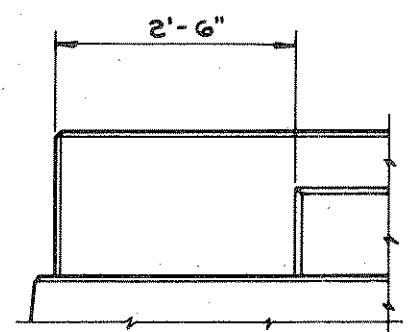


| R.P.R. DIVISION | PROJECT | SHEET NO. | TOTAL SHEETS |
|-----------------|---------|-----------|--------------|
| 4 | 5182(2) | 10 | 13 |



VIEW A
(VIEW A1-IS SIMILAR)



NOTES

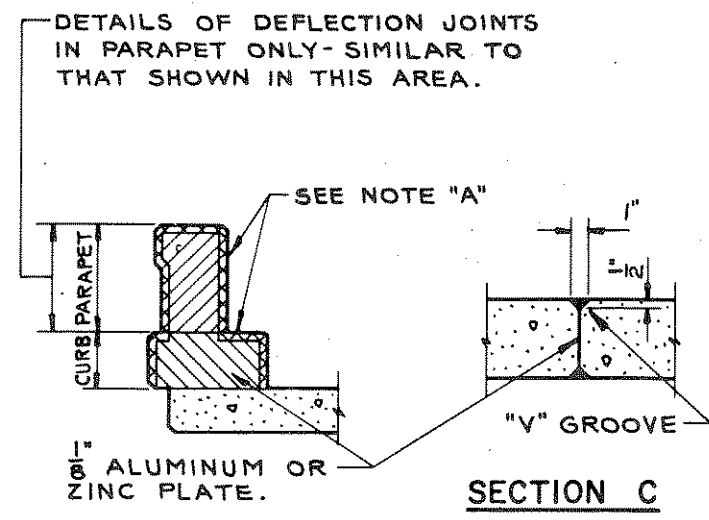
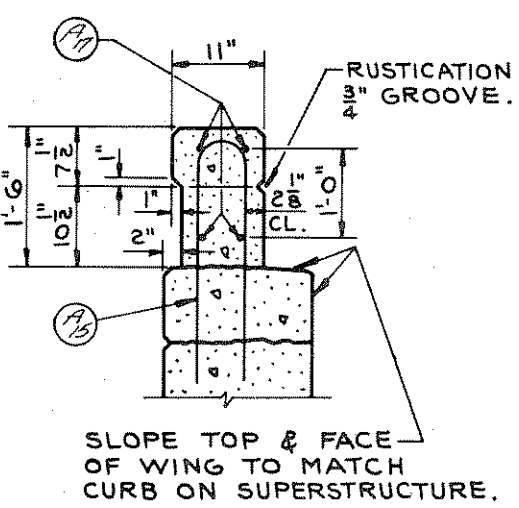
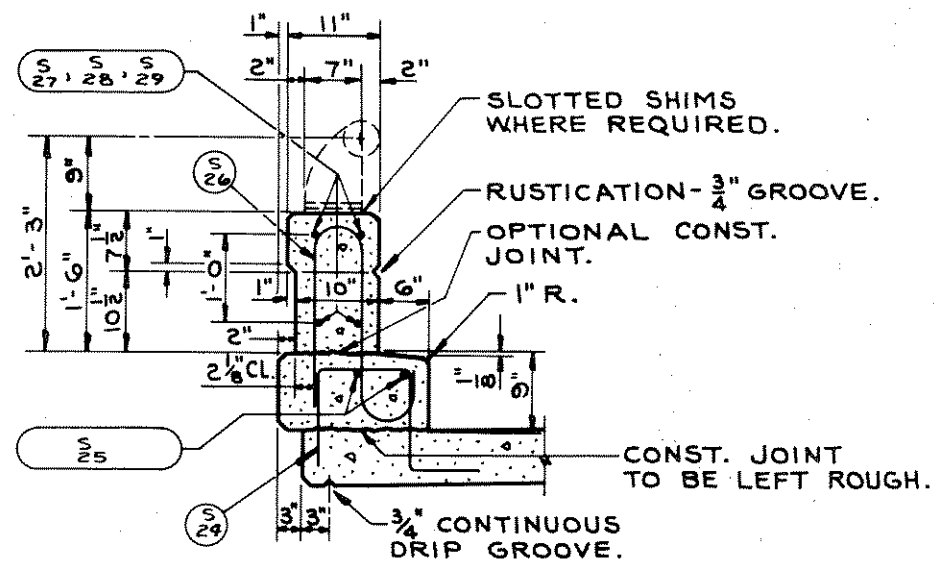
WHEN PARAPETS AND CURBS ARE POURED CONTINUOUSLY FROM END TO END THEY SHALL BE SEPARATED AT THE DEFLECTION JOINTS BY A PIECE OF 1/8" ZINC OR ALUMINUM PLATE CUT AS SHOWN IN SECTION "B" BY SHADED AREA. IF CONSTRUCTION JOINTS IN PARAPETS AND CURBS ARE USED AT THE DEFLECTION JOINTS ONE SIDE OF JOINT SHALL BE COATED WITH BITUMINOUS PAINT AND PLATE SEPARATORS MAY BE OMITTED.

COST OF 1/4" GALVANIZED PIPE SLEEVES AND 3/4" BAR TO BE INCLUDED IN UNIT PRICE BID FOR CONCRETE MASONRY.

WORK THIS SHEET WITH SHEET TITLED "DETAILS FOR TYPE "G" TUBULAR ALUMINUM AND STEEL RAILING".

ALL POST SPACINGS ARE TAKEN HORIZONTALLY ALONG CL OF RAILING AT BASE OF POSTS. ALL POSTS SHALL BE SET NORMAL TO GRADE.

NOTE "A": FILL WITH NON-STAINING GRAY TWO COMPONENT POLYSULFIDE LIQUID POLYMER (GUN GRADE) WITH SURFACE PRIMER, CONFORMING TO A.S.A.-A-116.1-1960.



| | | | |
|-------------|---------------------------------------|---------|-----------------------|
| REVISED | STATE HIGHWAY COMMISSION OF WISCONSIN | | |
| | RAIL PARAPET DETAILS | | |
| DESIGN SPEC | AASHO '61 | LOADING | CONSTR SPEC 1963 |
| DATE | 12-67 | DESIGN | DRAWN PAGE CRG. FR.W. |
| STRUCTURE | B-35-18 | SHEET | 6 OF 9 |