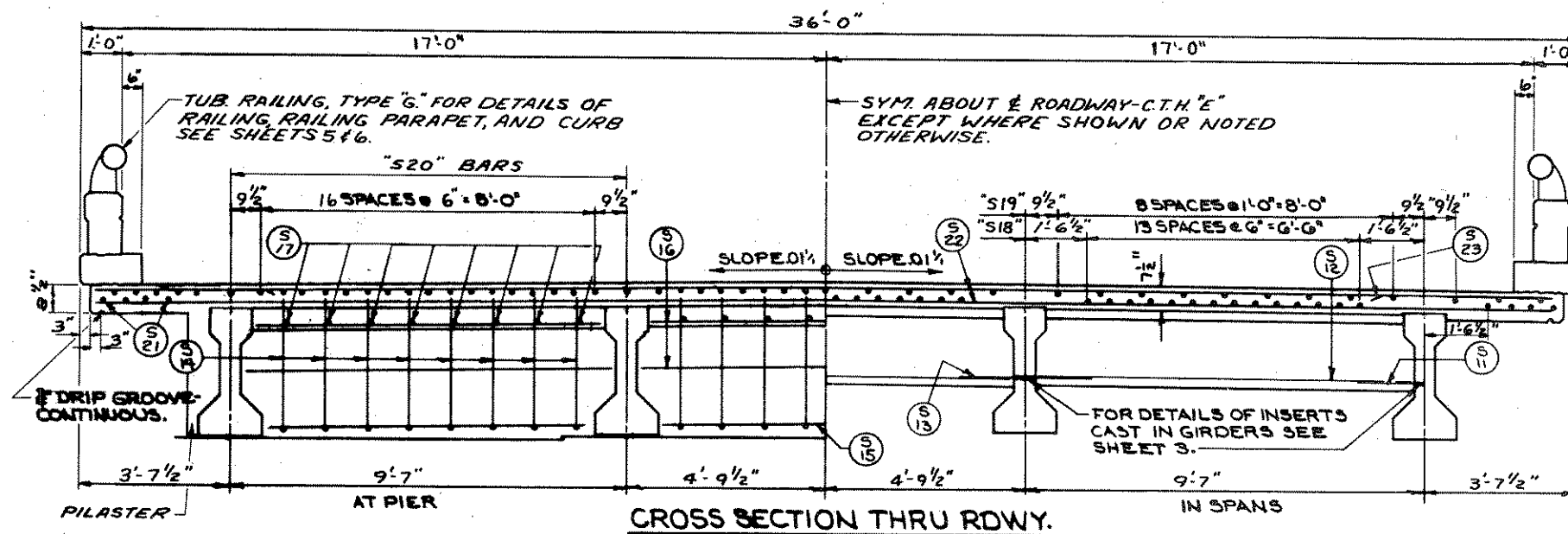


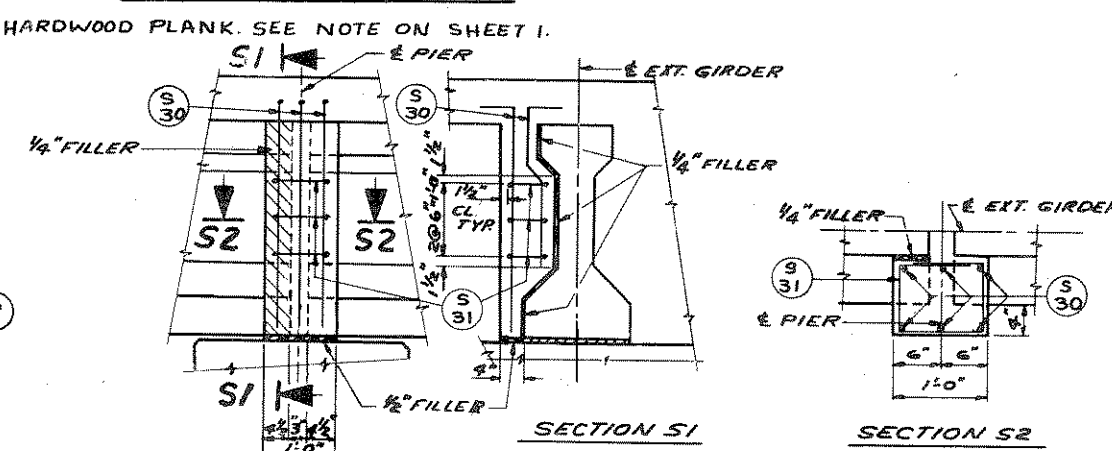
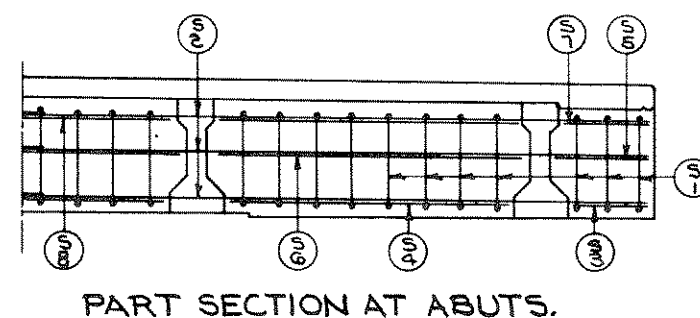
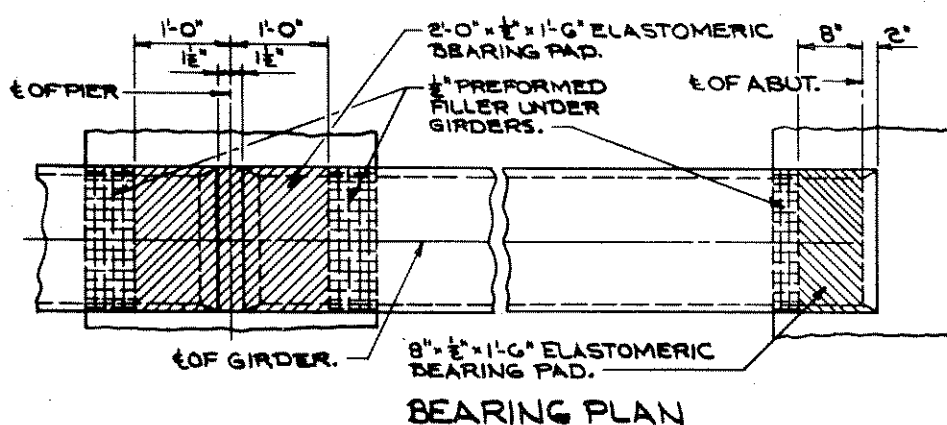
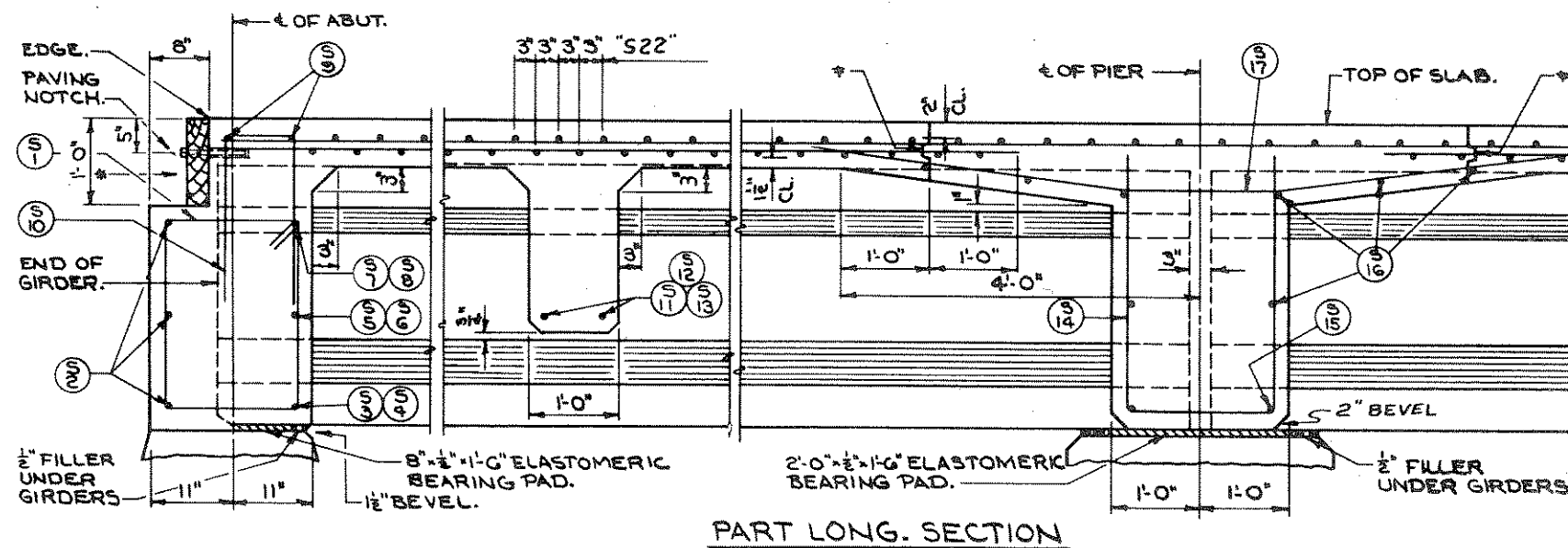
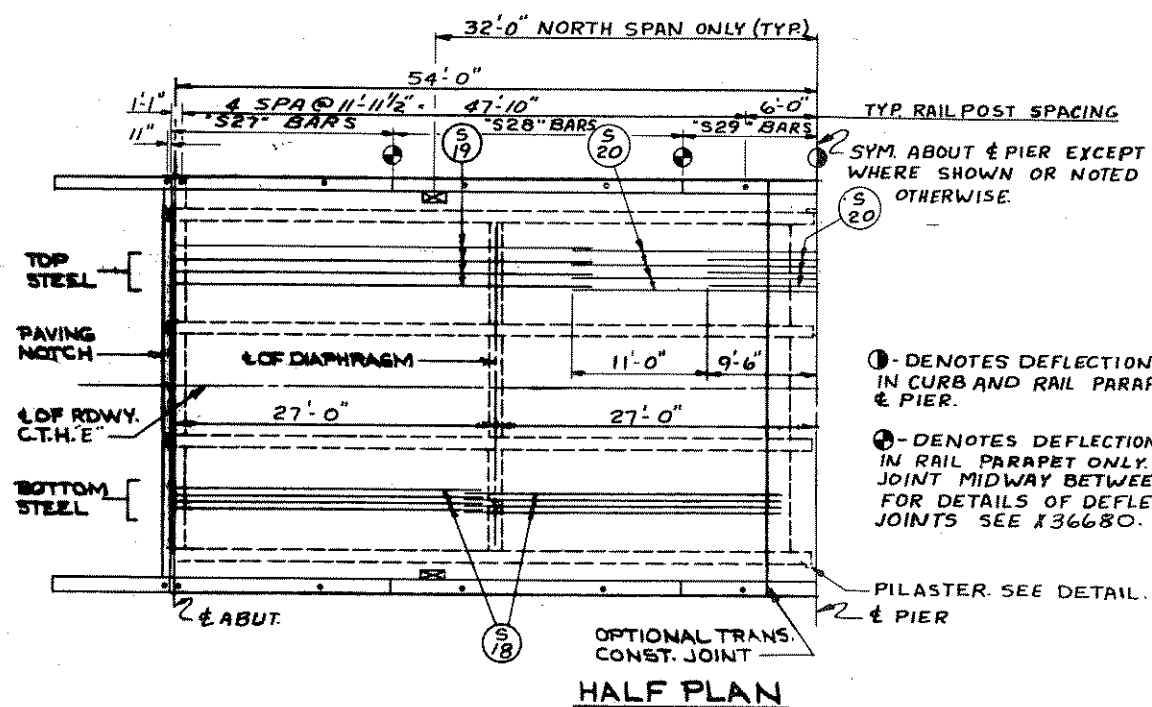
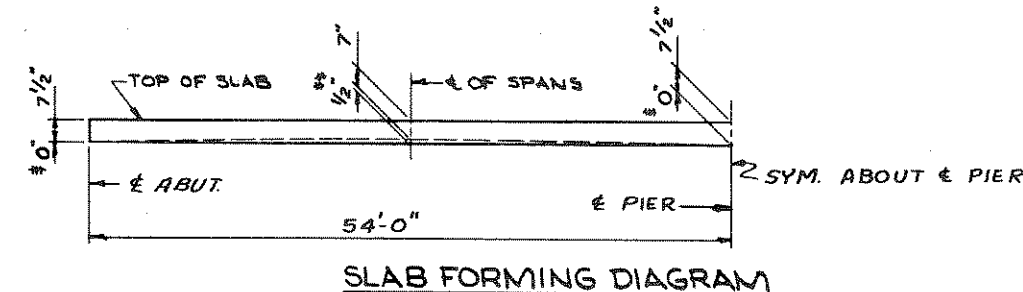
S. F. R. DIVISION	PROJECT	SHEET NO.	TOTAL SHEETS
4	51182(2)	6	13



* OPTIONAL TRANSVERSE CONSTRUCTION JOINTS. CONCRETE BETWEEN JOINTS OVER PIERS TO BE PLACED AFTER CONCRETE SLAB IN BOTH SPANS IS IN PLACE. CONSTRUCTION JOINTS MAY BE OMITTED IF PLACEMENT OF EACH SPAN CAN BE MADE IN NOT LONGER THAN A FIVE HOUR PERIOD.

** TO COMPENSATE FOR VARIATIONS IN PRESTRESS CAMBER AND OTHER MINOR CONSTRUCTION DISCREPANCIES THE IMBEDMENT AT THE E OF THE SPAN MAY BE VARIED WITH A MAXIMUM OF 1/2" ALLOWABLE IMBEDMENT AND THE SLAB HELD TO PLAN THICKNESS.

IF VARIATION IN PRESTRESS CAMBER AND OTHER CONSTRUCTION DISCREPANCIES ARE OF SUCH MAGNITUDE SO THAT THE MAXIMUM ALLOWABLE IMBEDMENT AS NOTED ABOVE WILL BE EXCEEDED THESE DIMENSIONS WILL BE REVISED. THE 1/2" IMBEDMENT AND THE PLAN SLAB THICKNESS WILL BE HELD WHILE THE GRADE LINE WILL BE REVISED.



REVISED	STATE HIGHWAY COMMISSION OF WISCONSIN
	SUPERSTRUCTURE
	DESIGN SPEC: AASHO-G1 LOADING: H20 CORR: 1963
	DATE: 12-67 DESIGN: CRD DRAWN: PAGE: C.R. F.R.W.
STRUCTURE B-35-18	SHEET 2 OF 9