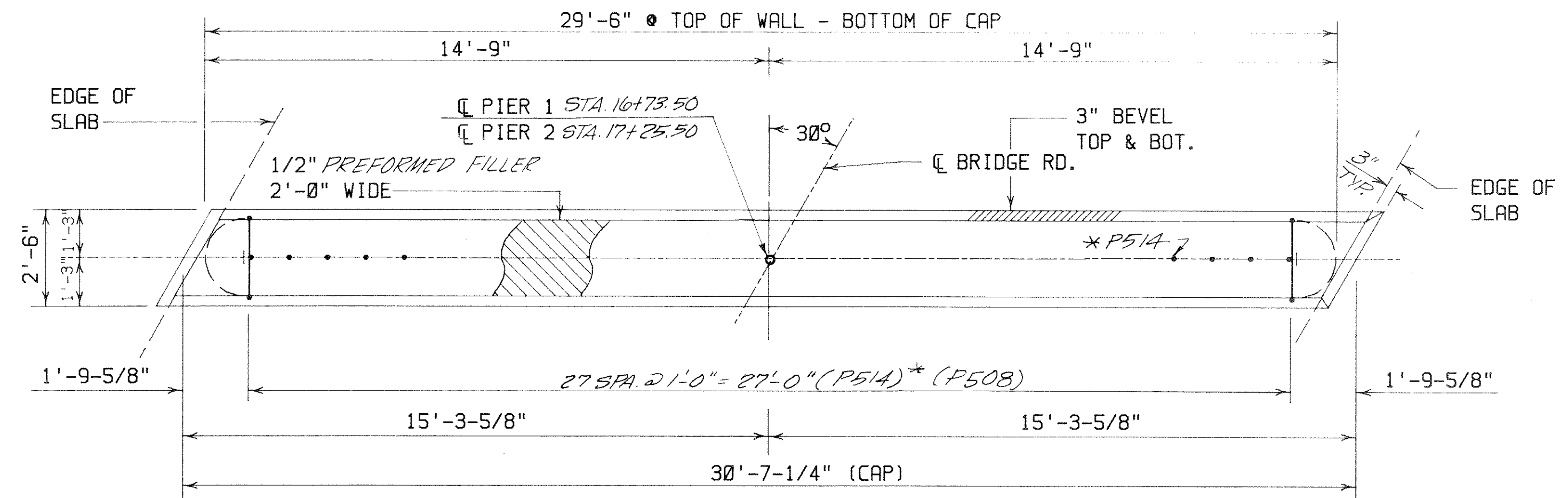
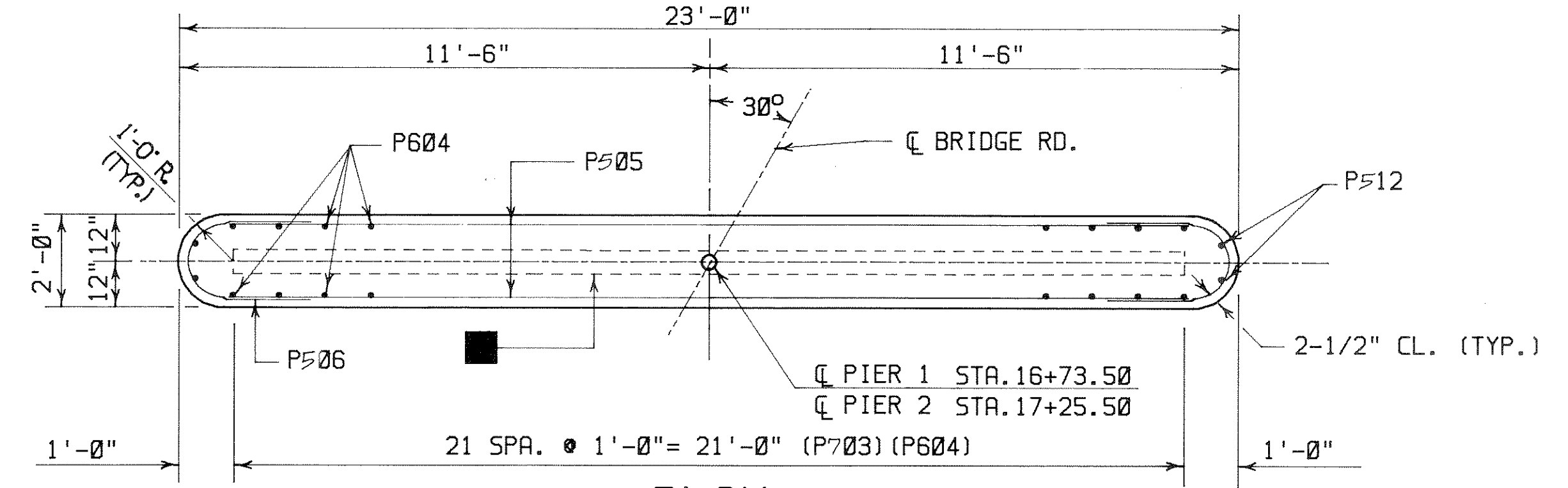


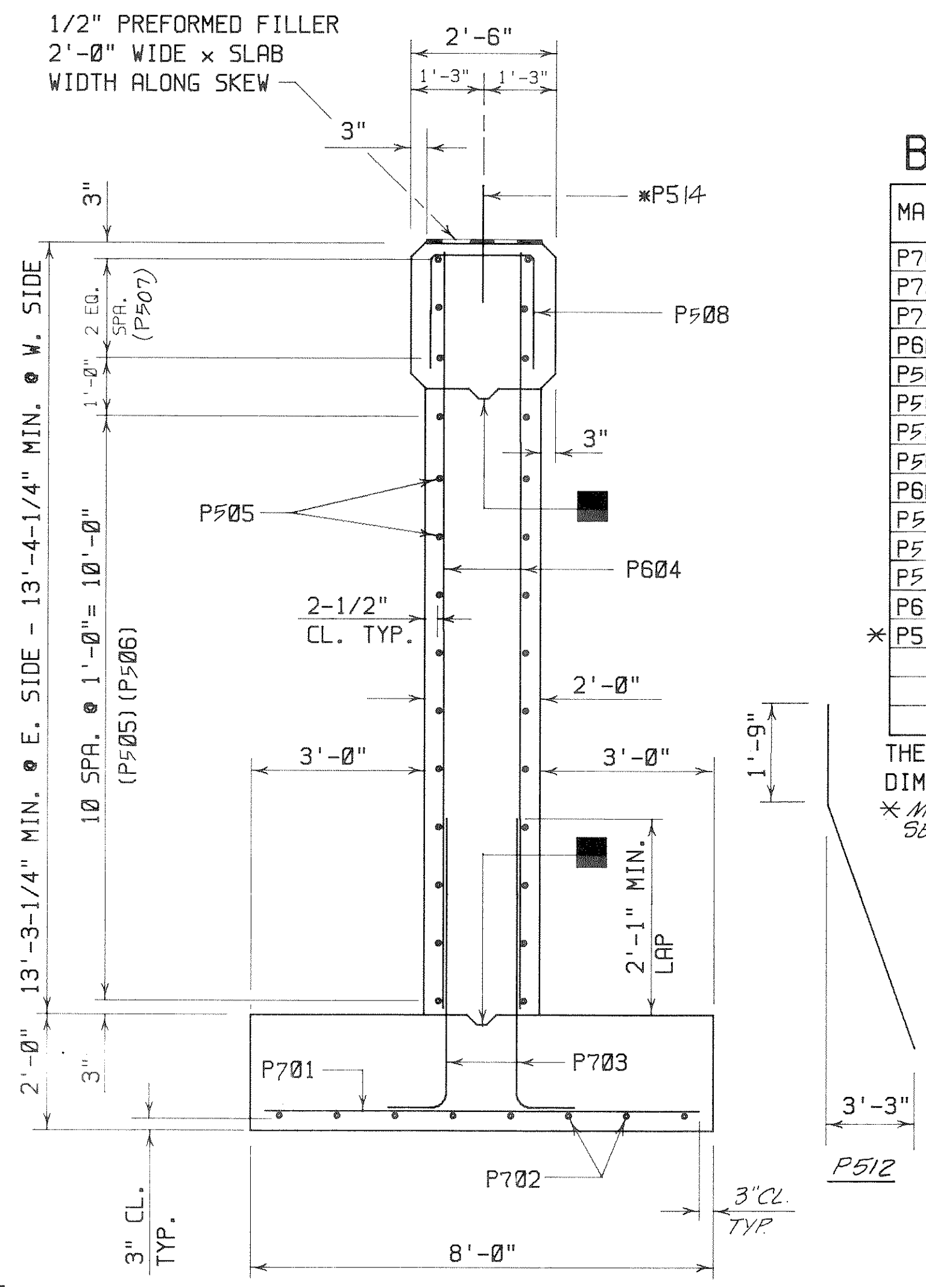
PIER ELEVATION



PIER CAP PLAN

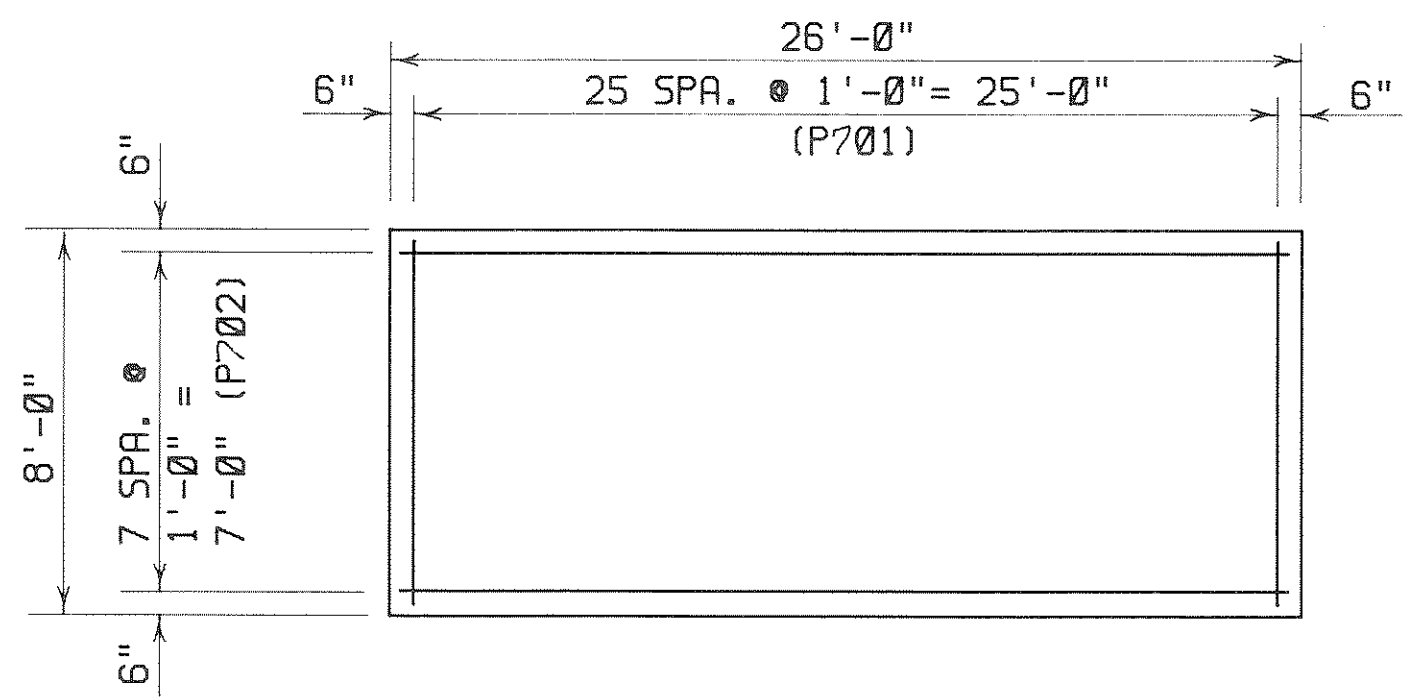


PLAN (WALL AT BOTTOM)



TYPICAL SECTION

NOTE: SHOULD THE BOTTOM OF FOOTING ELEVATION VARY, TOP OF PIER ELEVATION TO BE HELD WITH WALL HEIGHT CHANGING ACCORDINGLY. VERTICAL STEEL IN PIER SHAFT PROVIDES FOR VARIABLE LAP AS REQUIRED BY FIELD CONDITIONS. ENGINEER SHALL BE NOTIFIED IF VARIATION EXCEEDS 2'-0".

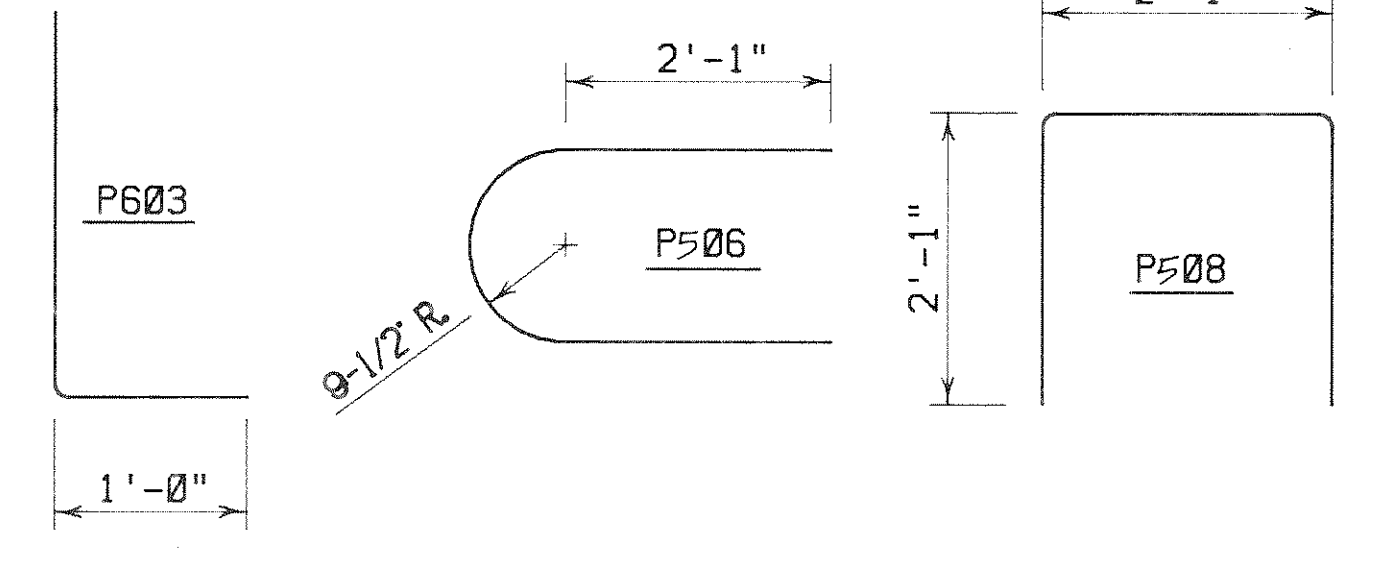


FOOTING PLAN

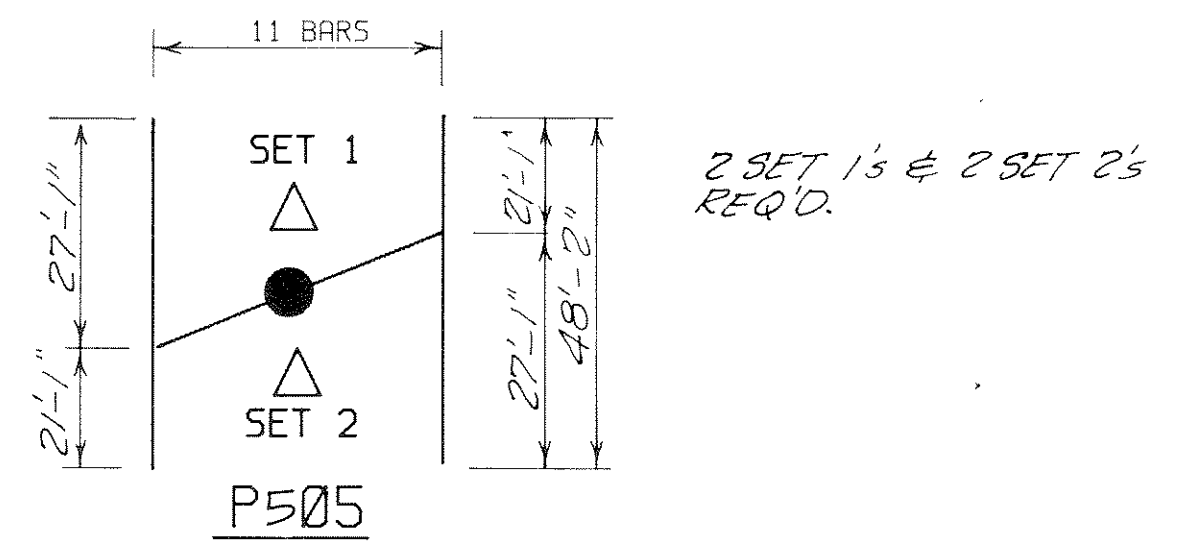
BILL OF BARS 7,180# (2 PIERS)

MARK	NO.	LENGTH	BENT	CUT	LOCATION
P701	52	7'-6"			FOOTING TRANS.
P702	16	25'-6"			FOOTING LONG.
P703	88	6'-6"	X		FOOTING DOWELS VERT.
P604	88	13'-1"			WALL VERT.
P505	22	48'-2"		X	WALL HORIZ.
P506	44	6'-8"	X		STIRRUPS @ END OF WALL
P507	12	30'-1"			CAP HORIZ.
P508	56	5'-11"	X		CAP TOP STIRRUPS VERT.
P609	8	12'-6"			WALL VERT.
P510	8	9'-2"			WALL VERT.
P511	8	5'-10"			WALL VERT.
P512	8	13'-6"	X		WALL VERT.
P613	4	2'-1"			CAP VERT @ END
*P514	56	2'-0"			CAP DOWELS VERT.

THE FIRST DIGIT OF A THREE DIGIT BAR MARK SIGNIFIES BAR SIZE. DIMENSIONS IN BENDING DETAILS ARE OUT TO OUT OF BARS. * MAY BE PLACED AFTER CONC. IS POURED, BUT BEFORE INITIAL SET HAS TAKEN PLACE.



CONSTRUCTION JOINT KEYWAY FORMED BY A SURFACED, BEVELED 2"x 6".



● MARK AND CUT ALL BARS ALONG THIS LINE. MAKE ALL CUTS NORMAL TO BAR AXIS.
 △ CUT, BUNDLE AND MARK ALL BARS WITH BAR AND SET NUMBER.

No.	Date	Revision	By
STATE OF WISCONSIN DEPARTMENT OF TRANSPORTATION DIVISION OF HIGHWAYS			
STRUCTURE B-35-91			
Const. Spec. WIS. '81	Drawn By J.L.	Plans Checked L.M.B.	
PIERS 1&2			SHEET 4 OF 6
			X 77182