

LIST OF DRAWINGS

- 1. GENERAL PLAN X 77179
- 2. SUBSURFACE EXPLORATION X 77180
- 3. ABUTMENTS X 77181
- 4. PIERS X 77182
- 5. SUPERSTRUCTURE X 77183
- 6. TUBULAR RAILING TYPE "F" X 77184

GENERAL NOTES

DRAWINGS SHALL NOT BE SCALED.
 BAR STEEL REINFORCEMENT SHALL BE EMBEDDED 2" CLEAR UNLESS OTHERWISE SHOWN OR NOTED.
 THE SLOPE OF THE FILL IN FRONT OF THE ABUTMENTS SHALL BE COVERED W/ HEAVY RIPRAP TO THE EXTENT SHOWN ON THIS SHEET.
 JOINT FILLER SHALL CONFORM TO A.A.S.H.T.O. DESIGNATION M153 TYPE I II or III, OR M 213.

THIS STRUCTURE WILL REPLACE P-35-64, A SINGLE SPAN STEEL OVERHEAD TRUSS 90' LG.
 SLAB FALSEWORK TO BE SUPPORTED ON PILES, UNLESS ALTERNATIVE METHOD IS APPROVED BY THE ENGINEER.

DESIGN DATA

STRUCTURE IS DESIGNED FOR A FUTURE WEARING SURFACE OF 20 P.S.F.
RATINGS: DESIGN RATING _____ H20
 INVENTORY RATING _____ H21
 OPERATING RATING _____ HS25
ALLOWABLE DESIGN STRESSES:
 CONCRETE MASONRY - SLAB $f_c = 4,000$ P.S.I.
 - ALL OTHER - $f_c = 3,500$ P.S.I.
 HIGH STRENGTH BAR STEEL REINFORCEMENT, GRADE 60 $f_y = 60,000$ P.S.I.

FOUNDATION DATA:

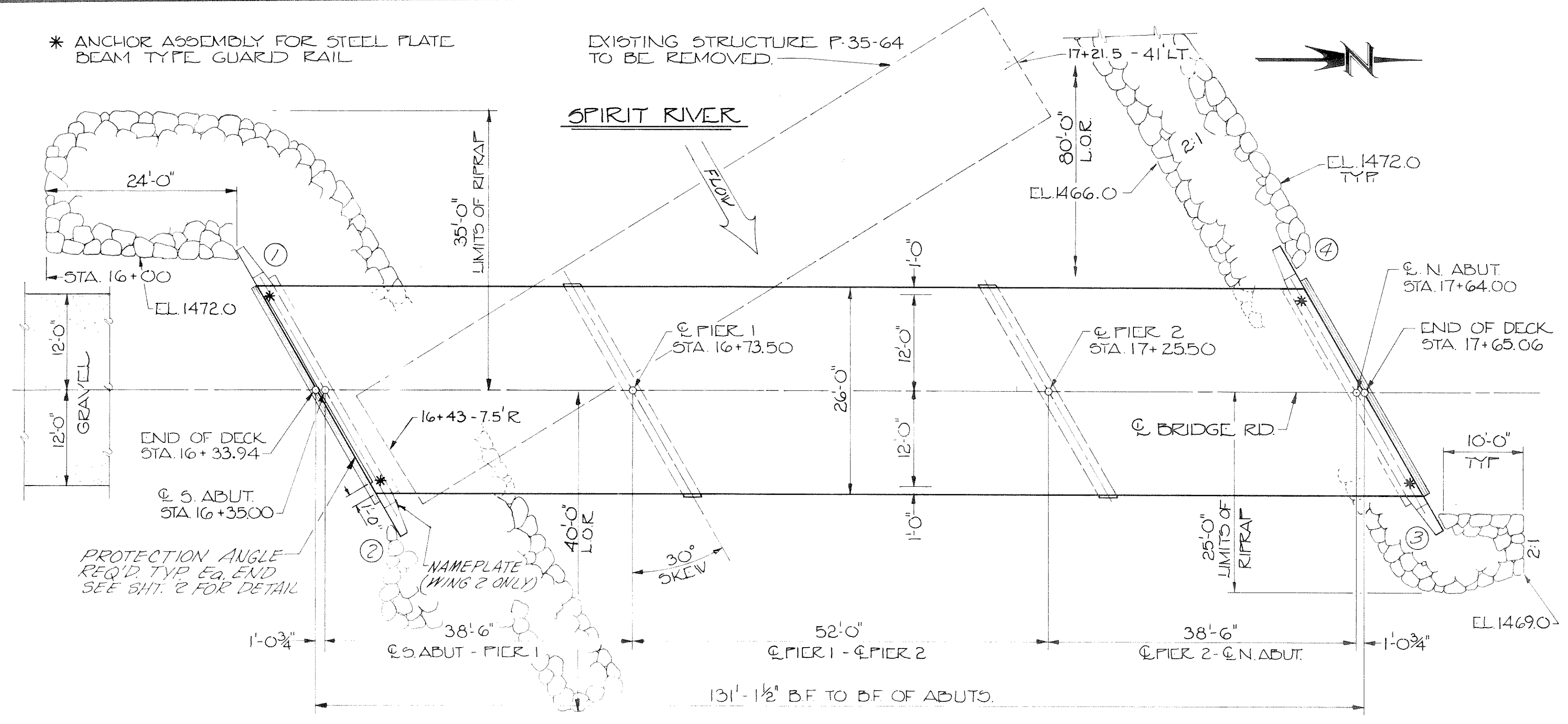
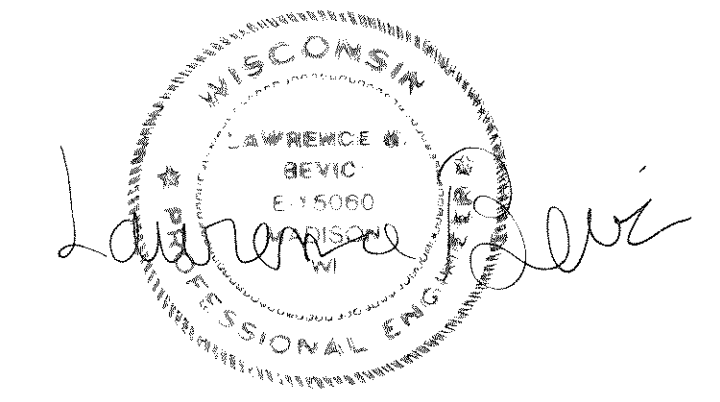
ABUTMENTS TO BE SUPPORTED ON HP 10x42 STEEL "H" PILES EST. 20'-0" LG. AND DRIVEN TO A MINIMUM BEARING VALUE OF 25 TONS/PILE.
 PIERS TO BE FOUNDED ON SOUND ROCK MINIMUM BEARING VALUE OF 4 TON/SQ.FT.

HYDRAULIC DATA:

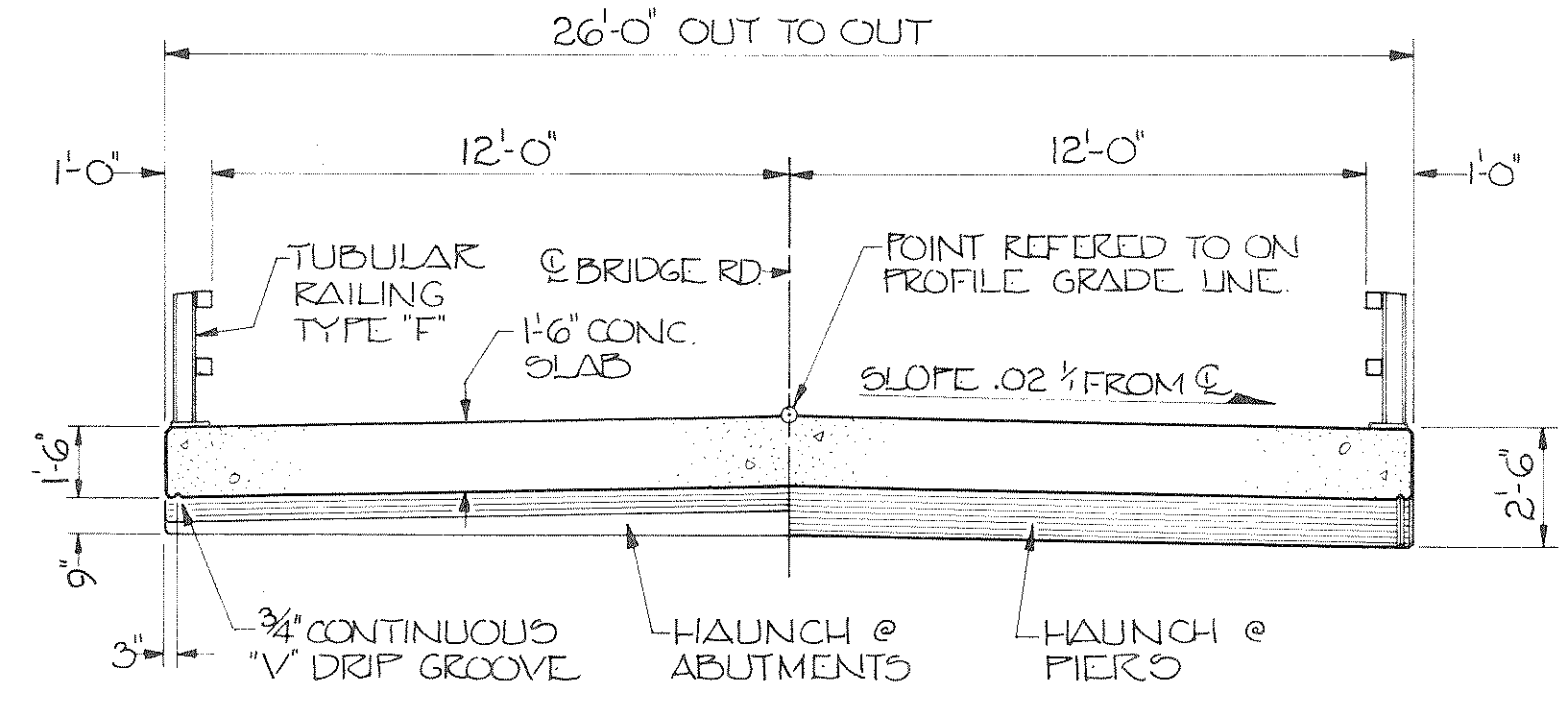
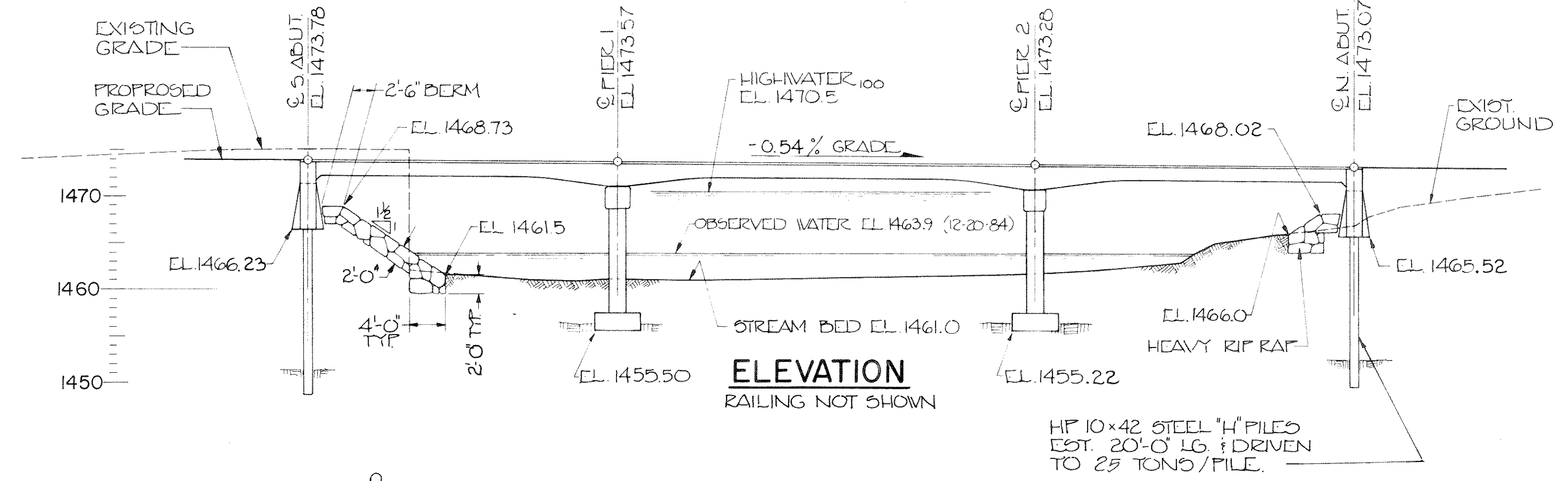
DRAINAGE AREA _____ 81.6 SQ. MI.
 100 YEAR FREQUENCY
 Q_{100} _____ 4,400 C.F.S.
 WATERWAY AREA _____ 829 SQ.FT.
 VELOCITY _____ 5.3 F.P.S.
 HIGHWATER₁₀₀ _____ EL. 1470.50
 ROADWAY OVERTOPPING _____ N/A

TRAFFIC DATA:

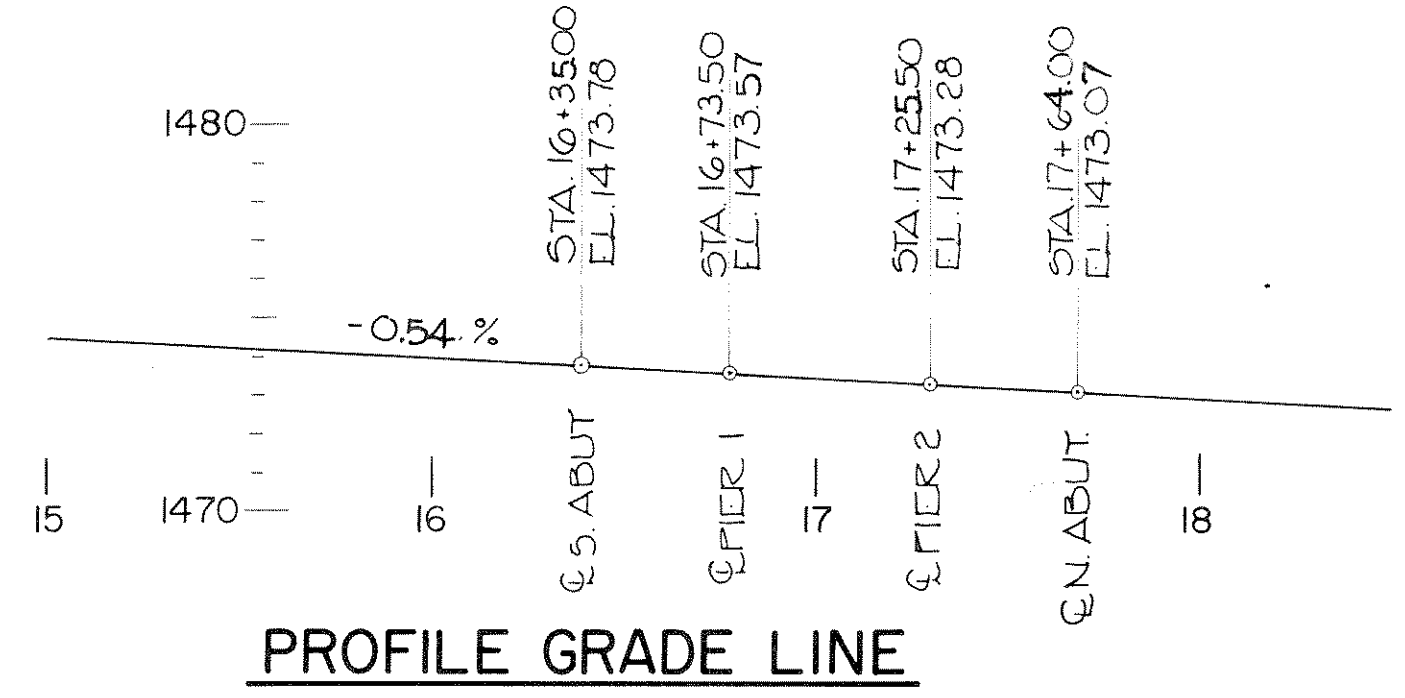
A.D.T. (1986) _____ 50
 A.D.T. (2006) _____ 100
 R.D.S. _____ 40 M.P.H.



PLAN
 3 SPAN CONTINUOUS HAUNCHED CONC. SLAB



CROSS SECTION THRU ROADWAY

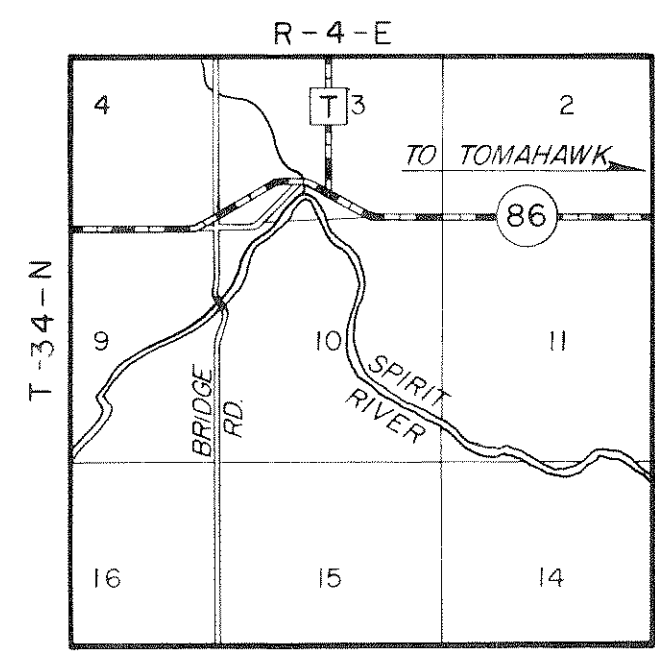


BENCH MARK LOCATION

NO.	STA.	DESCRIPTION	ELEV.
1	13+89	NAIL IN P.F. 1' UP E. SIDE	40' LT. 1472.61
2	17+18	NAIL IN P.F. 1' UP E. SIDE	71' LT. 1473.35
3	20+10	NAIL IN P.F. 1' UP E. SIDE	30' LT. 1471.73

TOTAL ESTIMATED QUANTITIES

BID ITEMS	UNIT	SOUTH ABUT.	PIER NO. 1	PIER NO. 2	NORTH ABUT.	SUPER	TOTAL
REMOVING OLD STRUCTURE STA. 16+83	L.S.	-	-	-	-	-	1
EXCAVATION FOR STRUCTURES, BRIDGES B-35-91	L.S.	-	-	-	-	-	1
CONCRETE MASONRY, BRIDGES	C.Y.	17.7	45.0	45.0	17.7	214.6	340
HIGH STRENGTH BAR STEEL REINFORCEMENT, BRIDGES	LBS.	1,380	3,590	3,590	1,380	19,095	29,035
COATED HIGH STRENGTH BAR STEEL REINFORCEMENT	LBS.	-	-	-	-	15,500	15,500
TUBULAR RAILING TYPE "F"	L.S.	-	-	-	-	1	1
HEAVY RIPRAP	C.Y.	135	-	-	105	-	240
PROTECTIVE SURFACE TREATMENT	GAL.	-	-	-	-	35	35
STRUCTURAL CARBON STEEL	LBS.	-	-	-	-	260	260
STEEL PILING, DELIVERED & DRIVEN HP 10x42	L.F.	100	-	-	100	-	200
FILLER (NON BID ITEM)	SIZE	-	-	-	-	-	1/2" & 3/4"
POLYVINYL CHLORIDE WATERSTOP (NON BID ITEM)	L.F.	36	-	-	36	-	72



LAYOUT

No.	Date	Revision	By
STATE OF WISCONSIN DEPARTMENT OF TRANSPORTATION DIVISION OF HIGHWAYS			
STRUCTURE B-35-91			
BRIDGE RD. OVER SPIRIT RIVER			
County LINCOLN		Town TOMAHAWK	
Design Spec. A.A.S.H.T.O. '83	Load H20	Const. Spec. WIS'81	
Designed By L.M.B.	Design Checked T.E.P.	Drawn By O.R.L.	Plans Checked L.M.B.
Approved _____ STATE Bridge Engineer		Date _____	
GENERAL PLAN			SHEET 1 OF 6 X 77179