

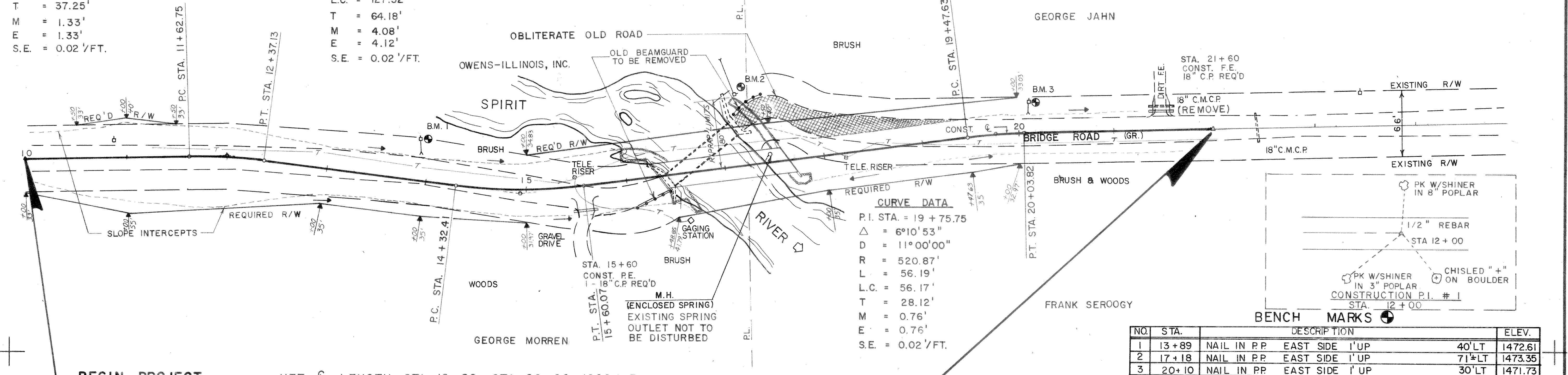
STATE PROJECT NUMBER	SHEET NO.
9864-02-70	
PLAN & PROFILE	

CURVE DATA
P.I. STA. 12+00
 $\Delta = 8^{\circ}10'53''$
D = 11'00'00"
R = 520.87'
L = 74.38'
L.C. = 74.31'
T = 37.25'
M = 1.33'
E = 1.33'
S.E. = 0.02' / FT.

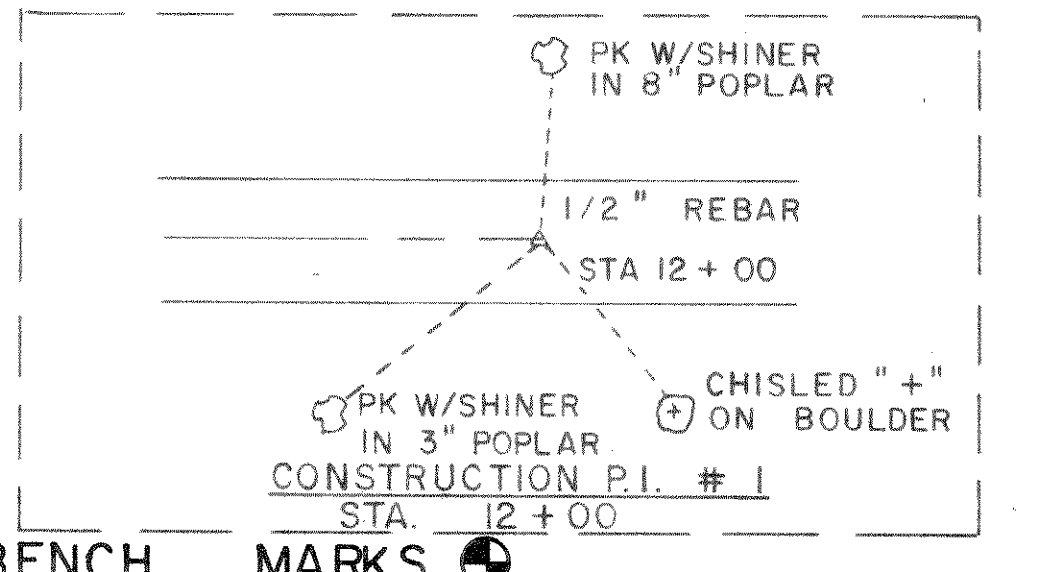
CURVE DATA
P.I. STA. = 14+96.59
 $\Delta = 14^{\circ}40'53''$
D = 11'30'00"
R = 498.22'
L = 127.66'
L.C. = 127.32'
T = 64.18'
M = 4.08'
E = 4.12'
S.E. = 0.02' / FT.

STA. 17+00
REMOVE STRUCTURE (P-35-64)
SINGLE SPAN STEEL OVERHEAD TRUSS
90.5' LONG, 15' WIDE

NOTE: GAGING DEVICE ON EXISTING BRIDGE SHALL BE REMOVED BY CONTRACTOR - SEE SPECIAL PROVISIONS.



CURVE DATA
P.I. STA. = 19+75.75
 $\Delta = 6^{\circ}10'53''$
D = 11'00'00"
R = 520.87'
L = 56.19'
L.C. = 56.17'
T = 28.12'
M = 0.76'
E = 0.76'
S.E. = 0.02' / FT.

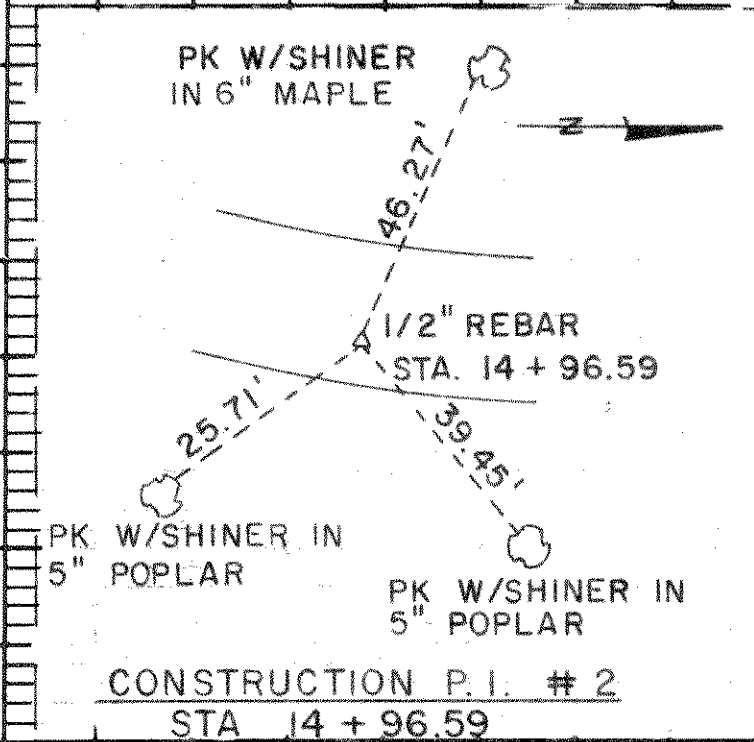
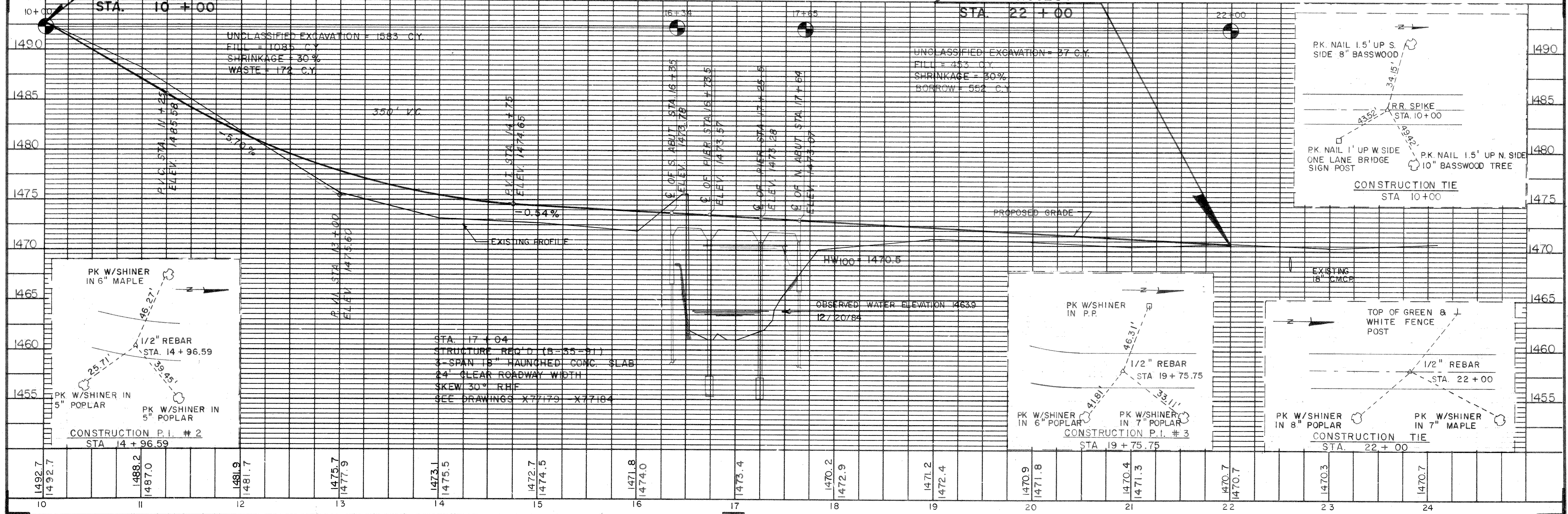


NO.	STA.	DESCRIPTION	ELEV.
1	13+89	NAIL IN P.P. EAST SIDE 1' UP	40'LT 1472.61
2	17+18	NAIL IN P.P. EAST SIDE 1' UP	71'LT 1473.35
3	20+10	NAIL IN P.P. EAST SIDE 1' UP	30'LT 1471.73

BEGIN PROJECT
STA. 10+00

NET LENGTH = STA. 10+00 - STA. 22+00 = 1200 L.F.

END PROJECT
STA. 22+00



STA. 17+04
STRUCTURE REQ'D (P-35-61)
3-SPAN 18" HAUGHED CONC. SLAB
24' CLEAR ROADWAY WIDTH
SKEW 30° R.H.P.
SEE DRAWINGS X-77179 - X-77184

