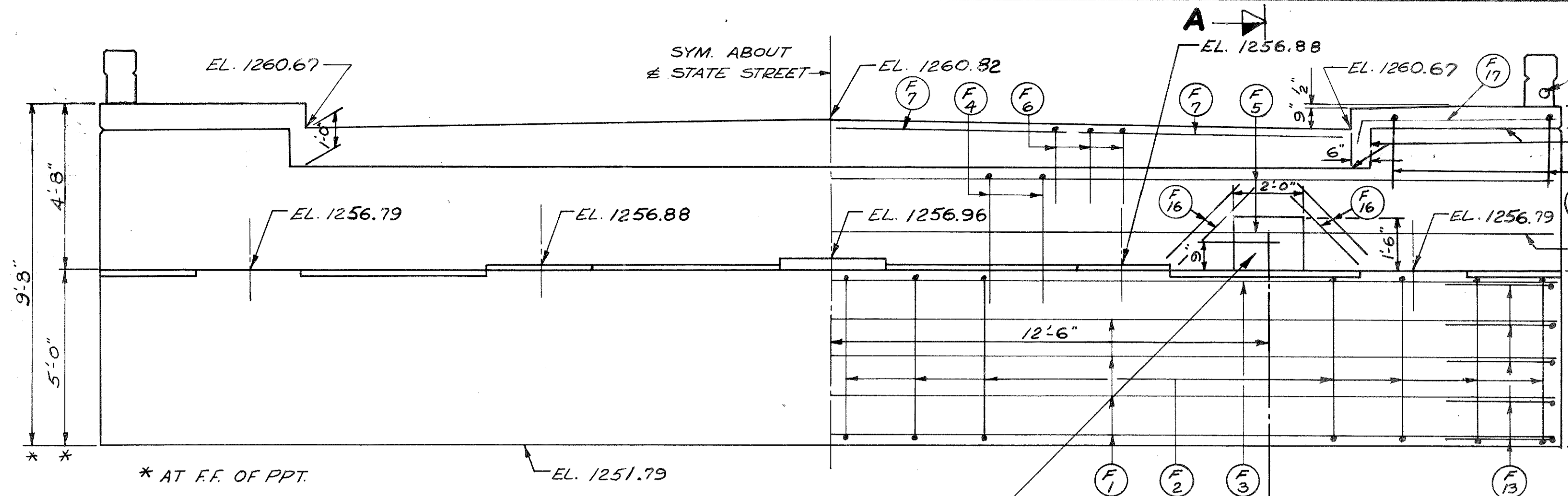


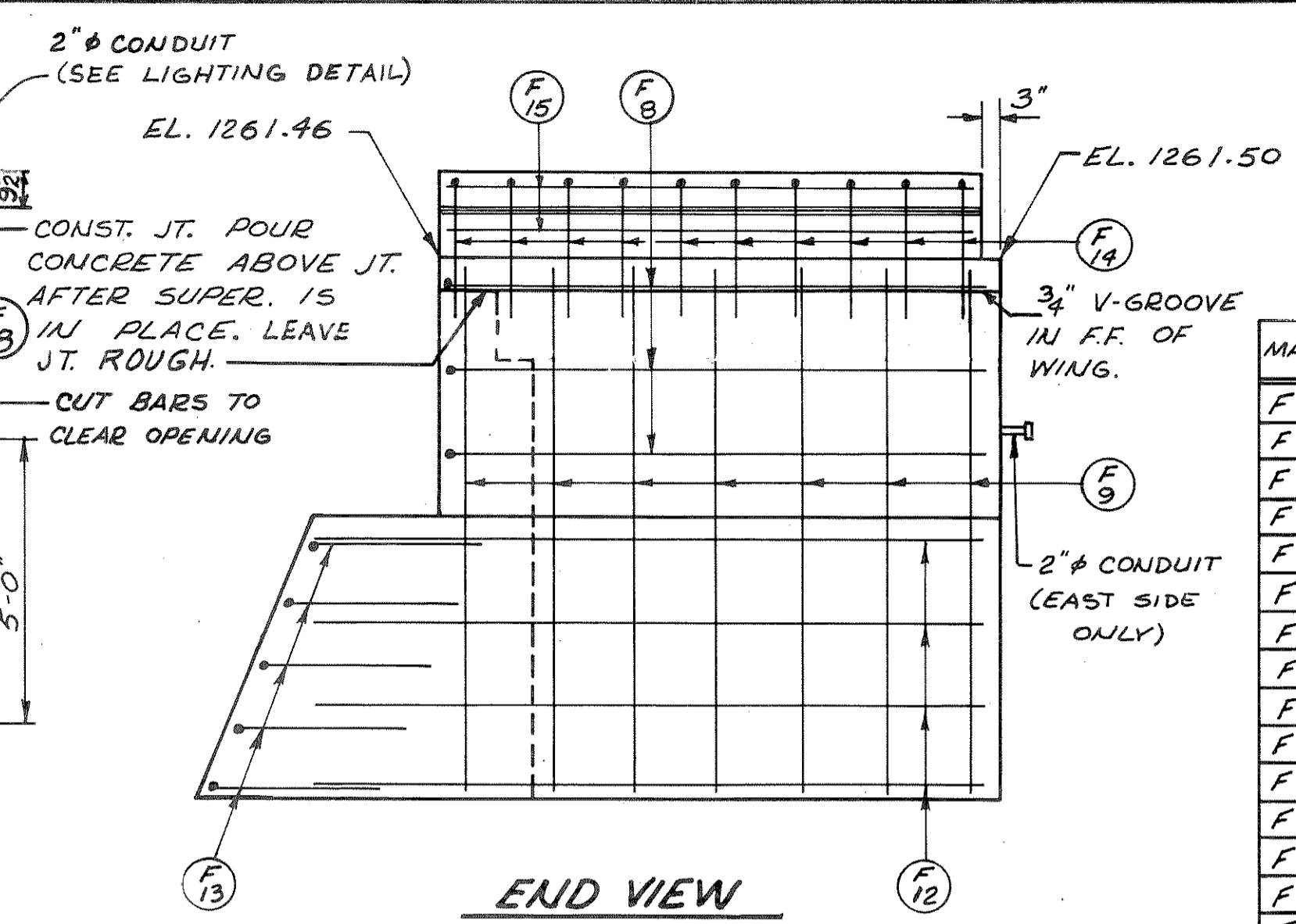
BILL OF BARS 1950

DIMENSIONS IN BENDING DETAILS ARE OUT TO OUT.

MARK	NO	SIZE	LENGTH	SPACING	LOCATION	DET
F1	14	4	21-6	SHOWN	BODY - HORIZ.	
F2	22	4	13-3	2-0	" - VERT.	A
F3	6	6	21-6	SHOWN	" - HORIZ.	
F4	29	6	9-9	1-6	" - VERT.	B
F5	6	4	21-6	SHOWN	" - HORIZ.	
F6	30	5	4-9	1-0	" - VERT.	B
F7	8	4	8-0	SHOWN	" - HORIZ. DO NOT LAP	
F8	10	4	10-9	1-6	WINGS - HORIZ.	C
F9	14	4	8-6	1-6	" - VERT.	
F10	12	4	4-6	1-6	" - "	
F11	14	4	4-3	1-6	" - "	
F12	16	4	11-3	1-6	" - HORIZ.	
F13	10	4	5-0	SHOWN	WINGS & BODY	C
F14	20	5	5-9	1-0	RAIL PARAPET	B
F15	8	5	9-3	SHOWN	" - "	
F16	8	5	2-6	SHOWN	AT OPENING	
F17	4	4	6-0	10	SDWK - TRANS	D
F18	8	4	4-6	1-6	" - "	B

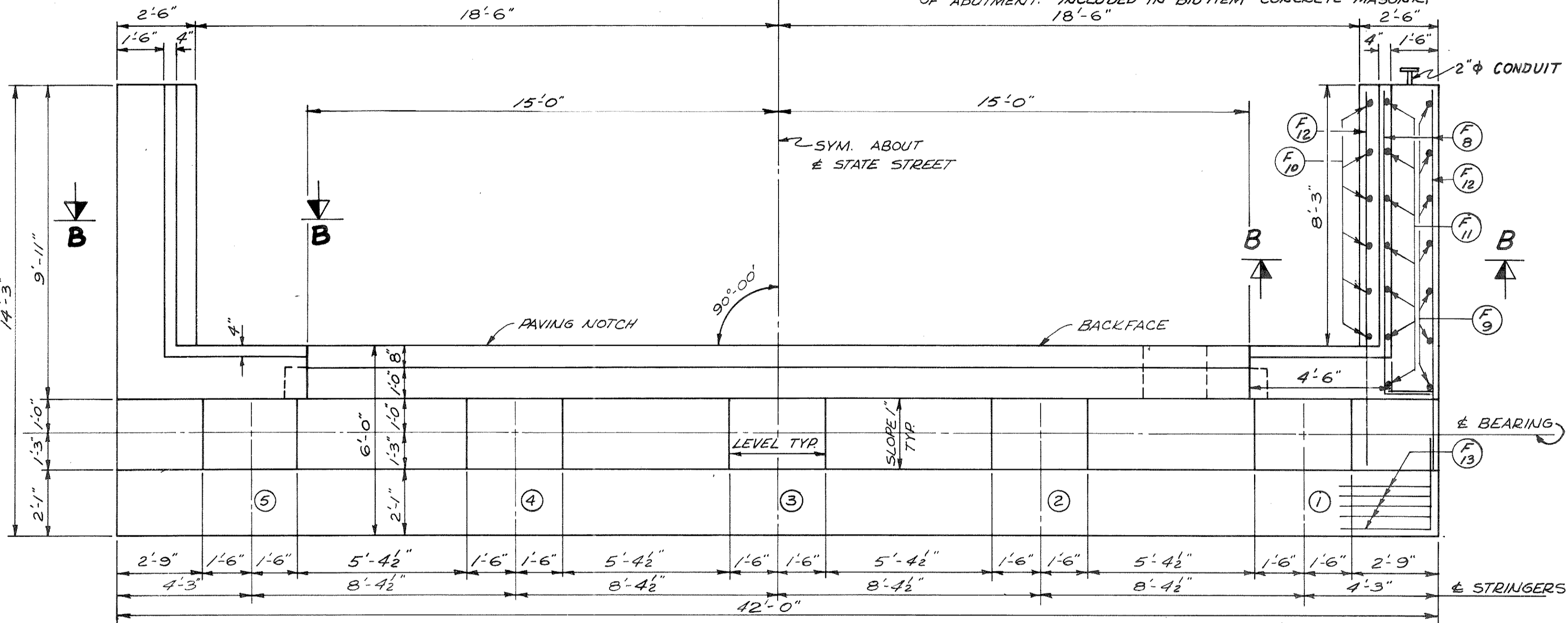


ELEVATION
LOOKING NORTH

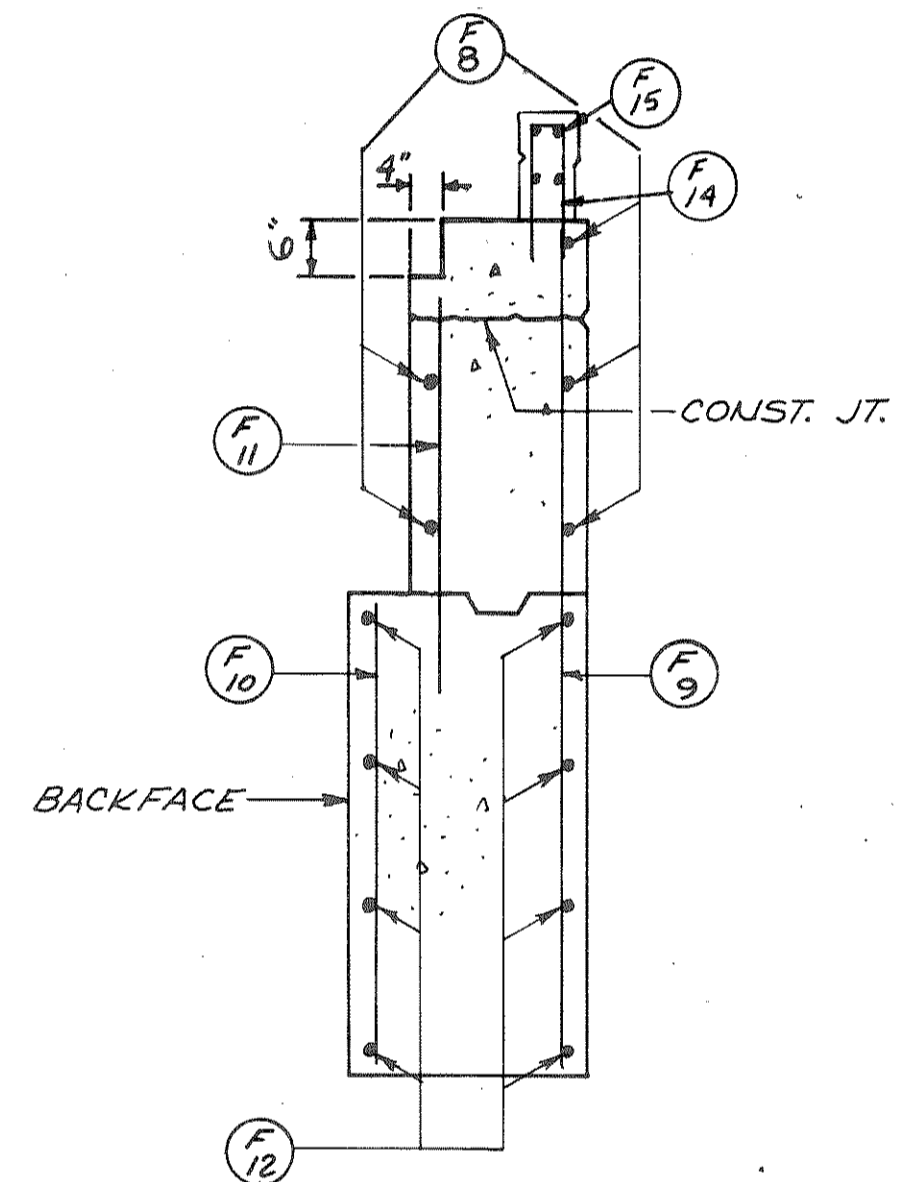


END VIEW

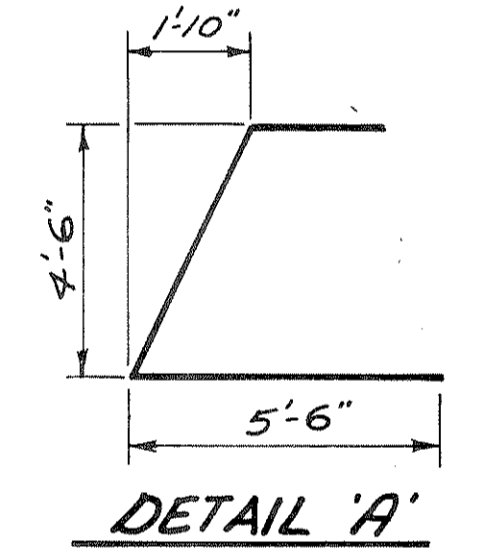
FILL OPENING WITH 1'-0" THICK BRICK MASONRY BARRIERWALL. HOLD WALL FLUSH WITH BACKFACE OF ABUTMENT. INCLUDED IN BID ITEM "CONCRETE MASONRY" 18'-6"



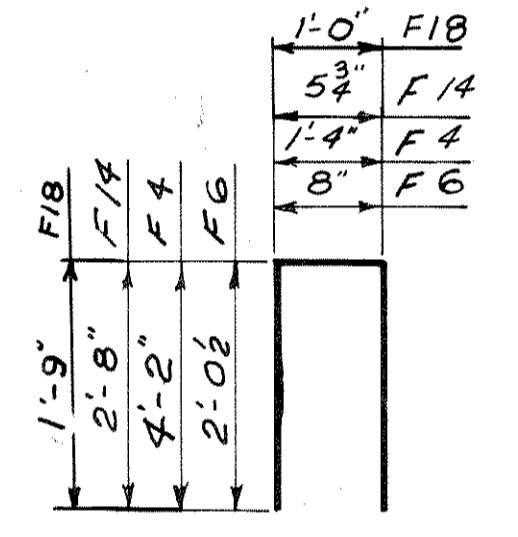
PLAN



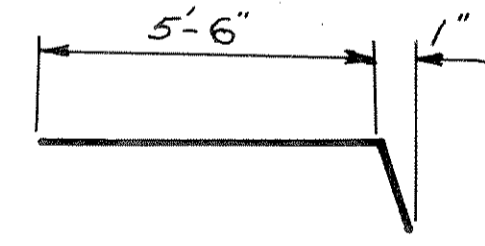
SECTION BB



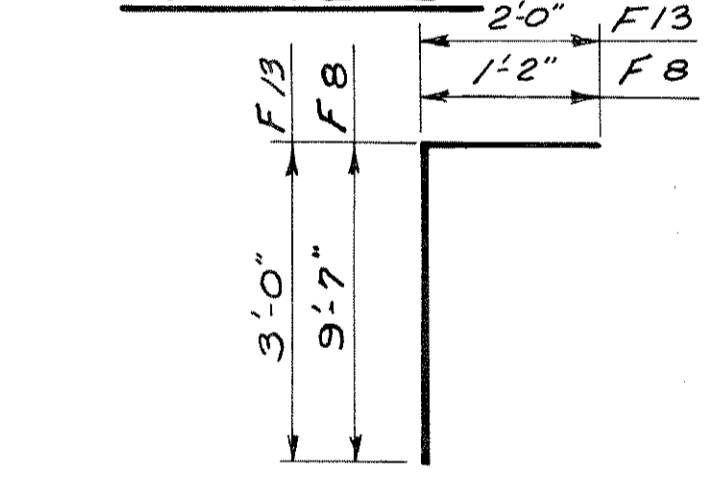
DETAIL 'A'



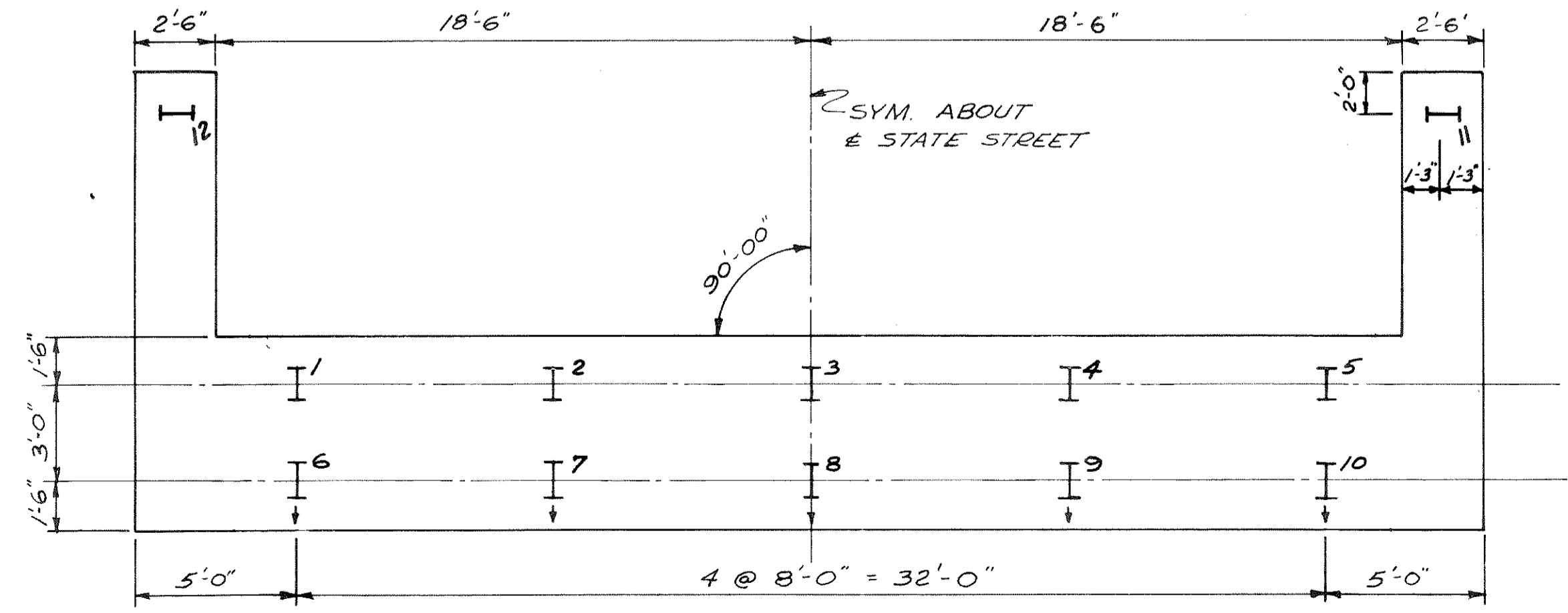
DETAIL 'B'



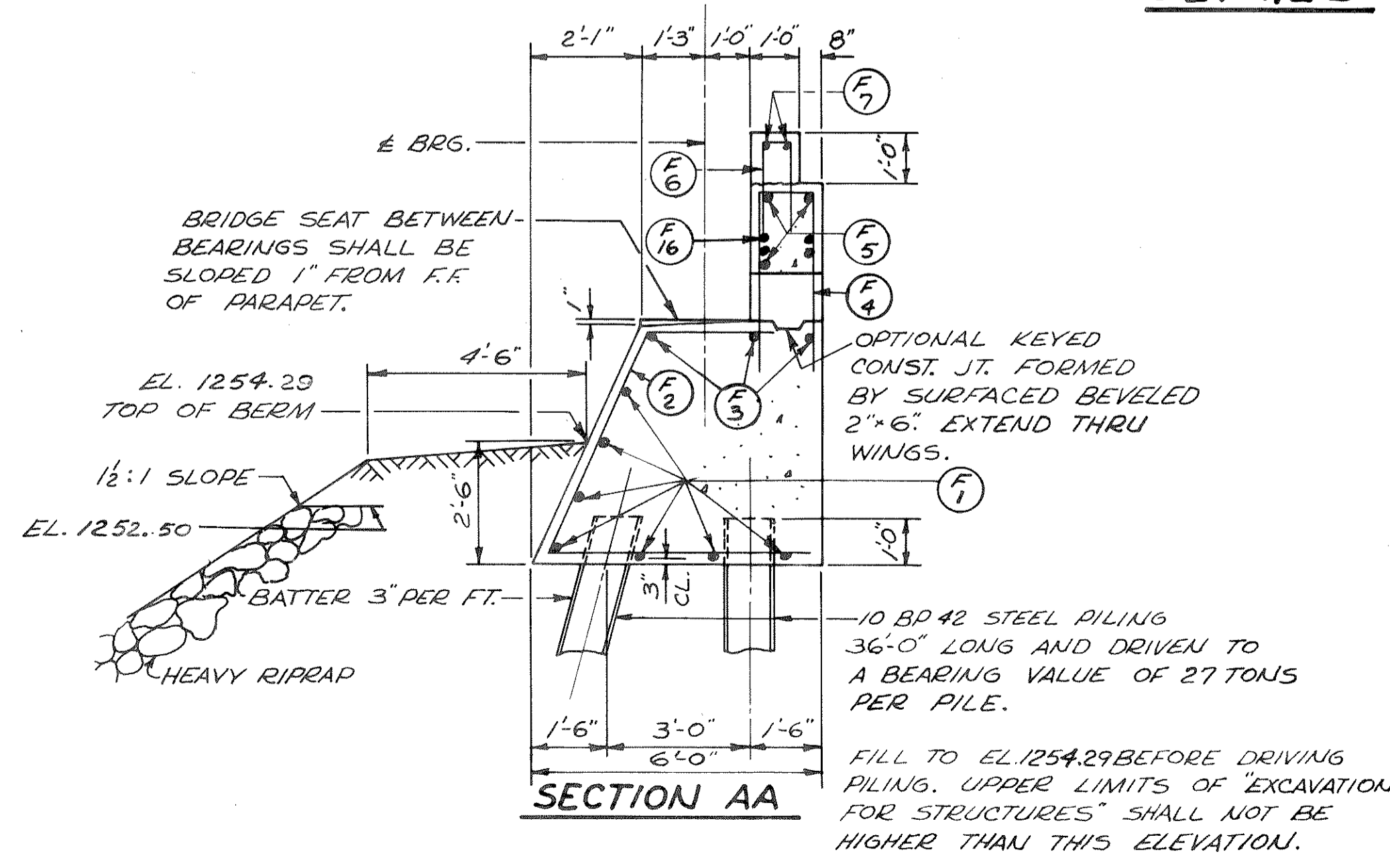
DETAIL 'D'



DETAIL 'C'



PILE SPACING



SECTION AA

REVISED	STATE HIGHWAY COMMISSION OF
	NORTH ABUTMENT
	DESIGN SPEC. A.A.S. HO. '61 LEADING H20-44
	DATE 9-23-64 DESIGN B (MANN) 1/6
STRUCTURE B-35-15	SHEET 1