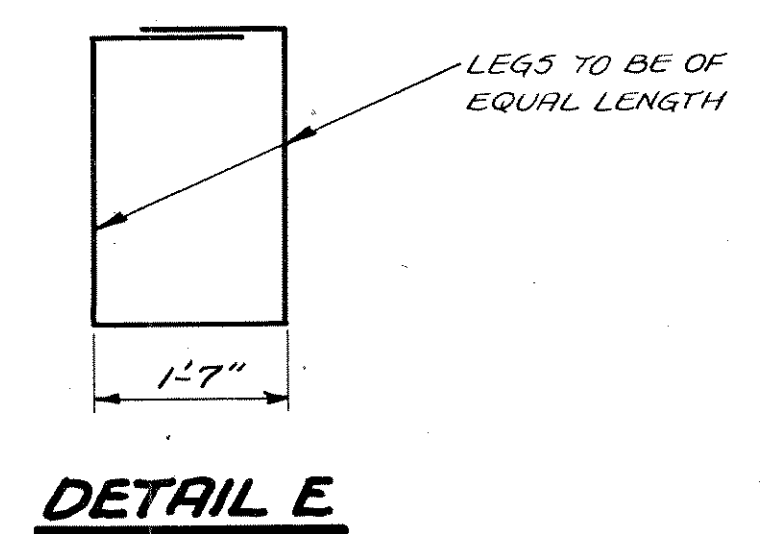
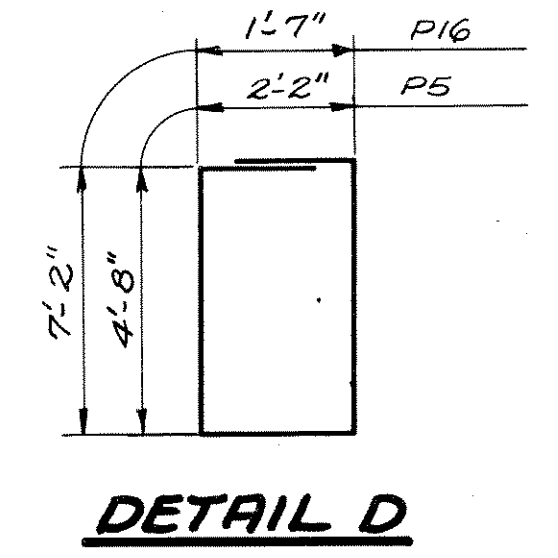
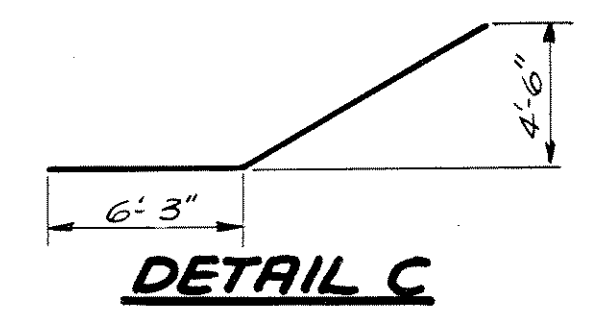
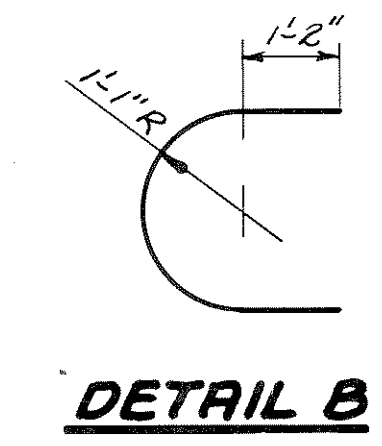
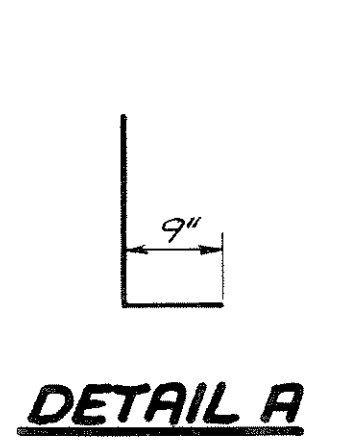
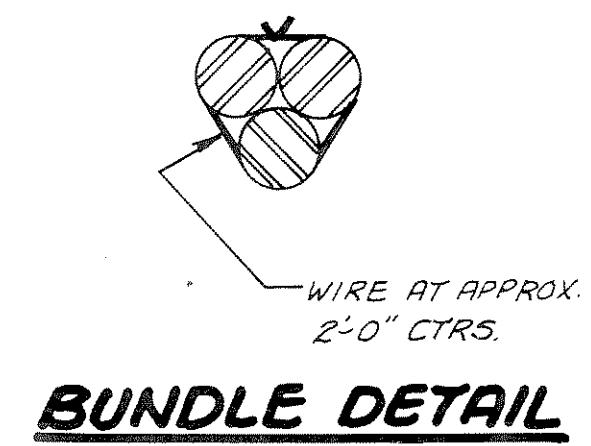
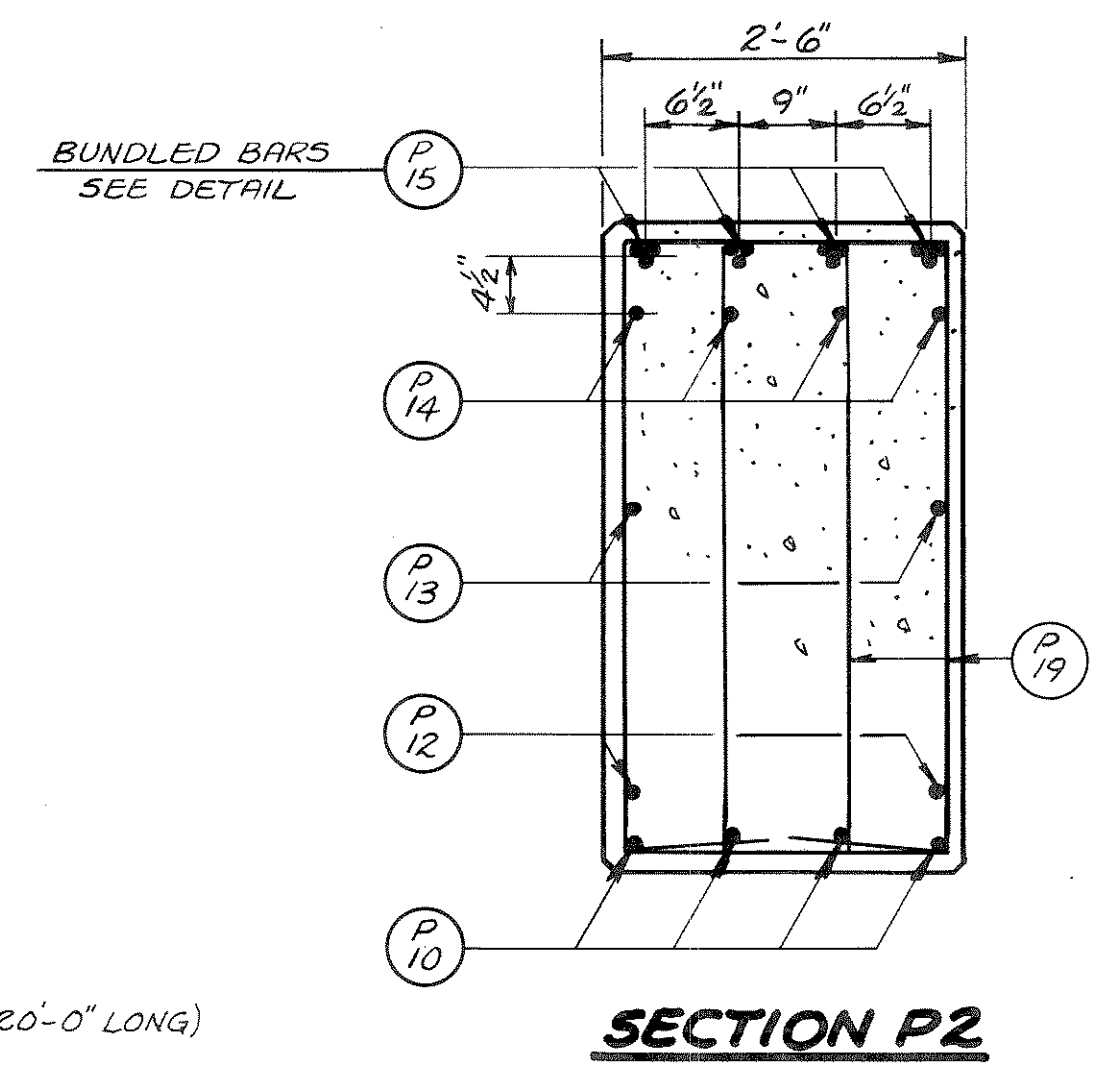
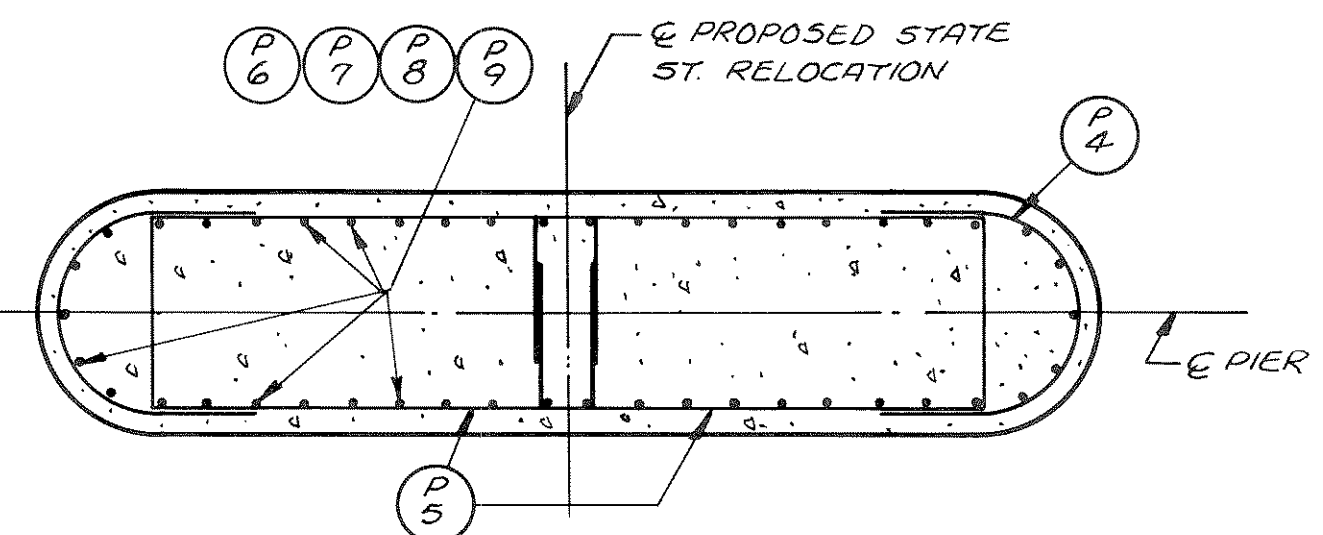
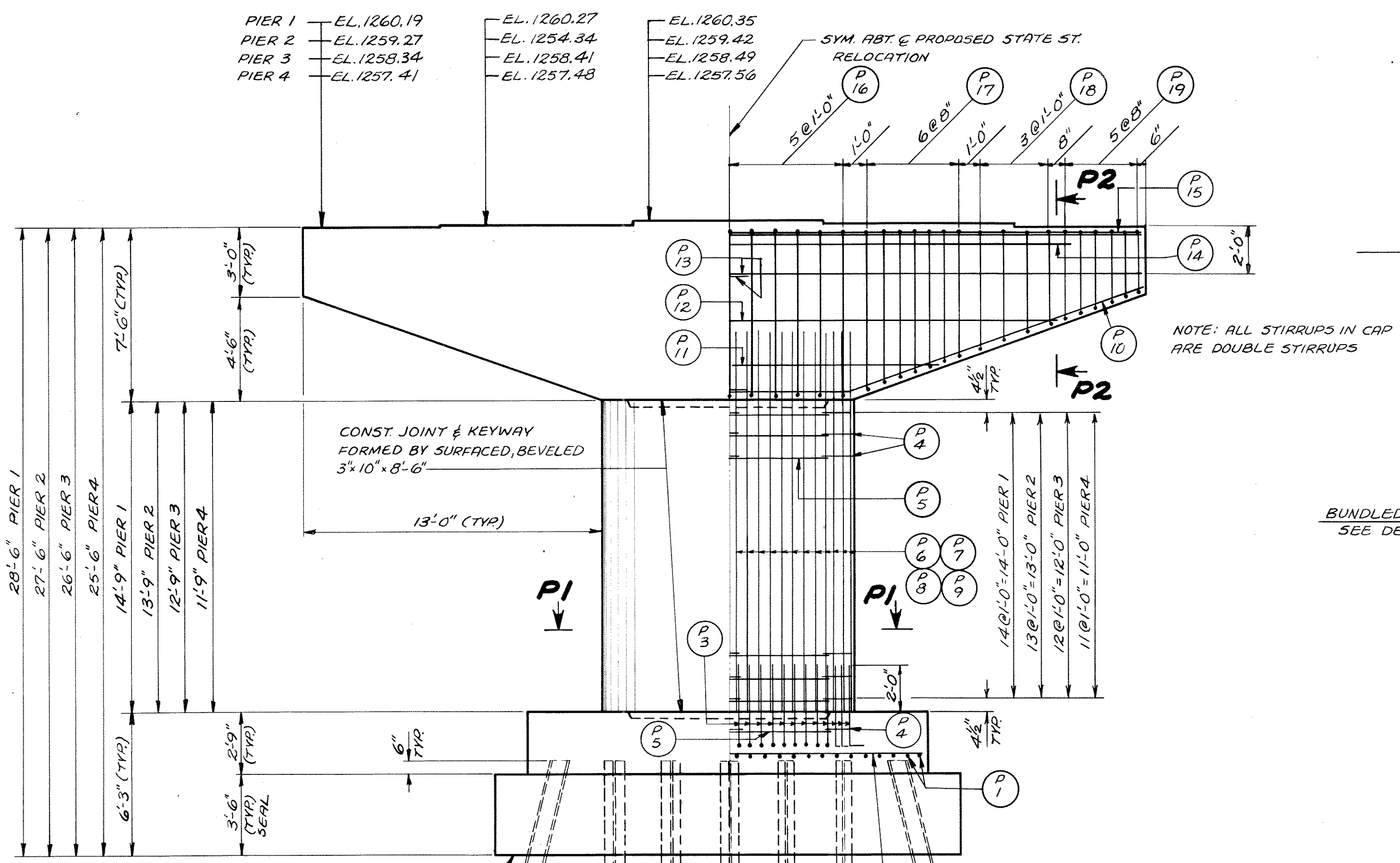


BILL OF BARS 37,190#

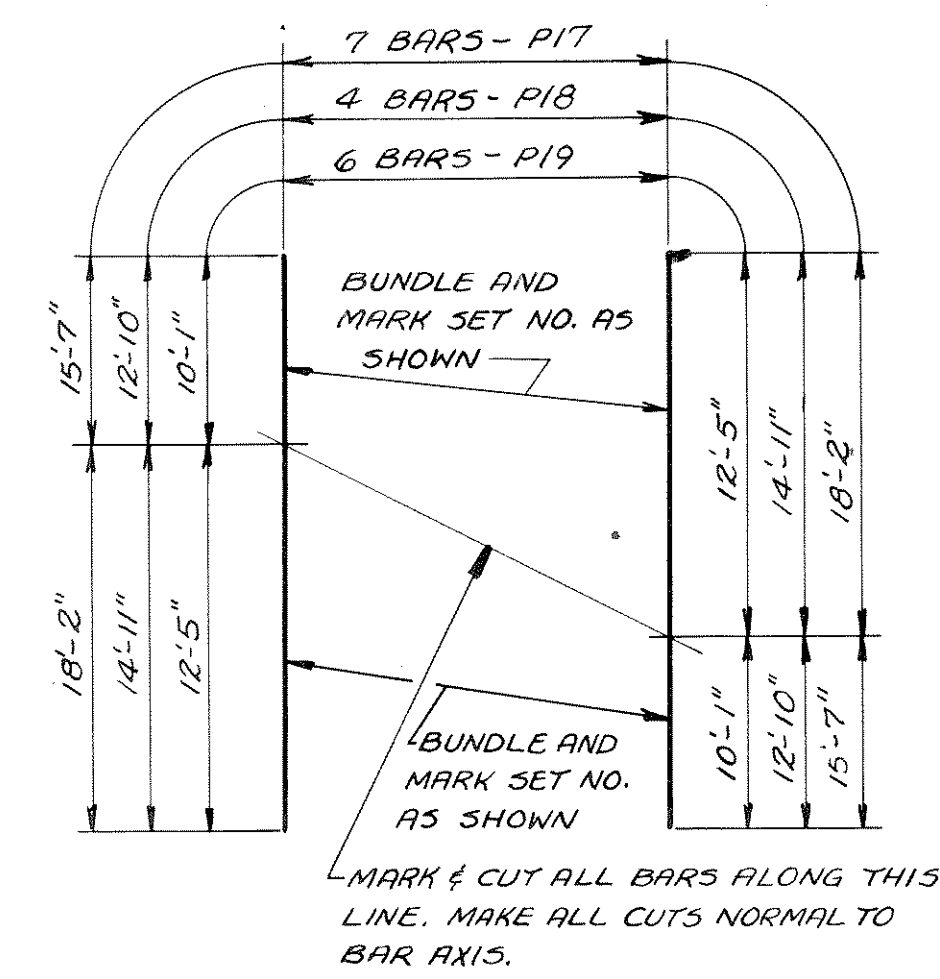
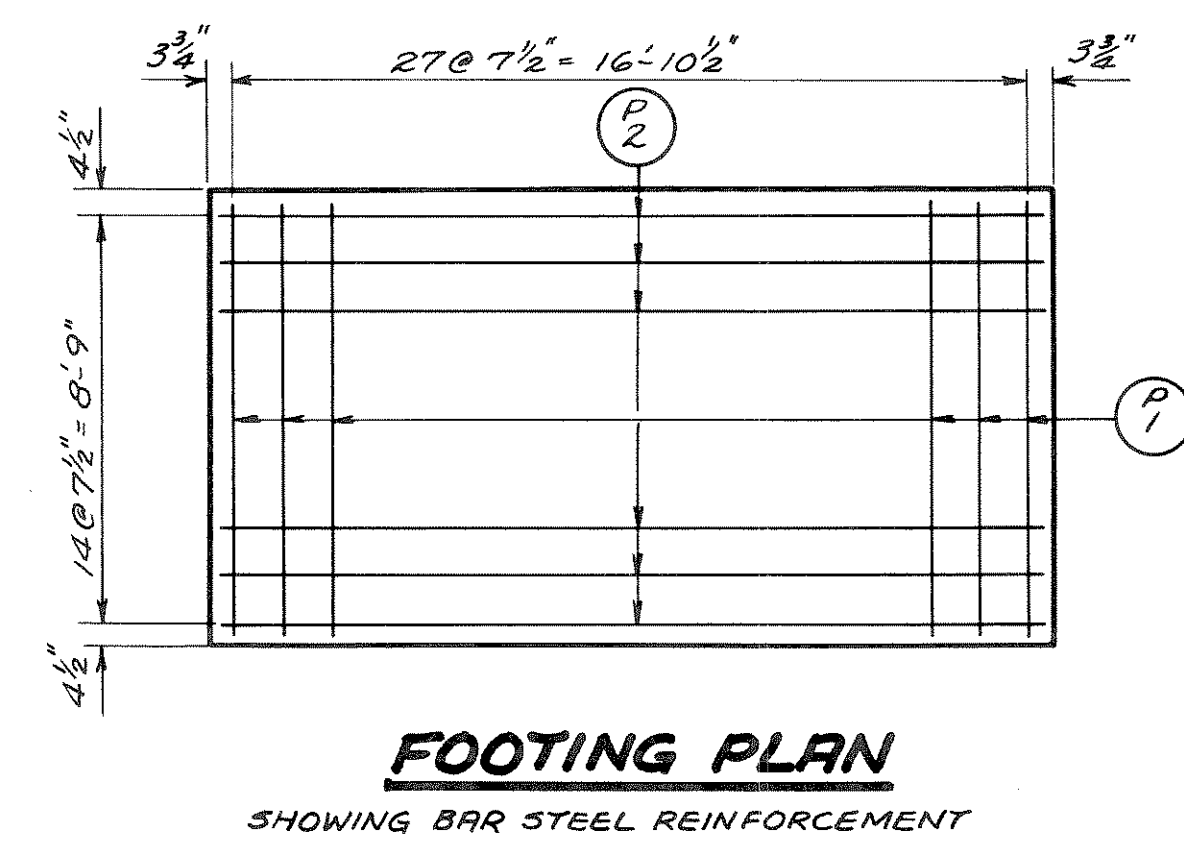
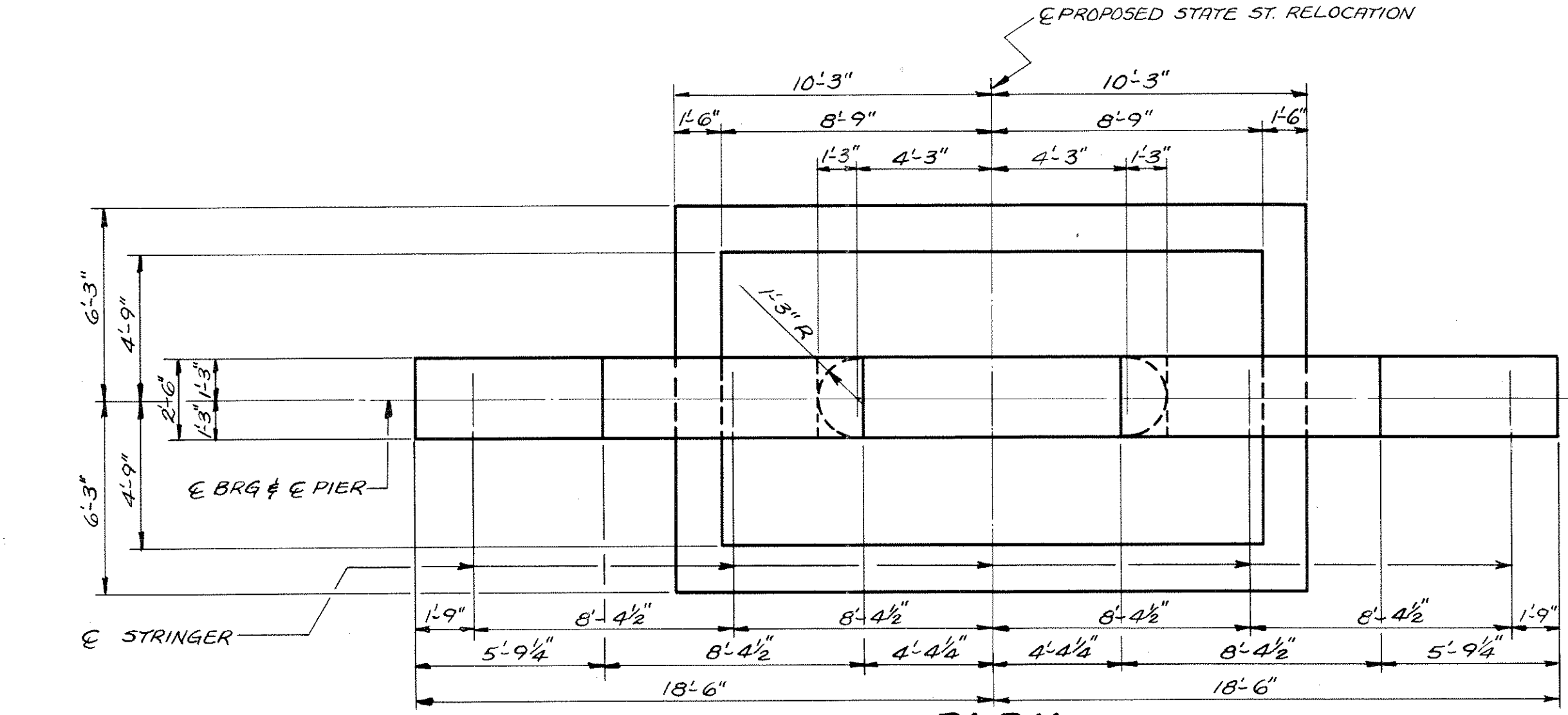
| FOUR | MARK | NO. | SIZE | LENGTH | SPACING | LOCATION | DET. |
|------------|------|-----|------|--------|---------|----------------|------|
| FOOTING | P1 | 112 | 10 | 9-0 | 7 1/2 | FOOTING | |
| | P2 | 60 | 8 | 17-0 | 7 1/2 | " | |
| | P3 | 184 | 8 | 4-0 | SHOWN | " # STEM | A |
| | P4 | 8 | 4 | 6-0 | 1-0 | " | B |
| | P5 | 8 | 4 | 14-9 | 1-0 | " | D |
| STEM & CAP | P4 | 108 | 4 | 6-0 | 1-0 | STEM | B |
| | P5 | 108 | 4 | 14-9 | 1-0 | " | D |
| | P6 | 46 | 8 | 17-9 | SHOWN | " - PIER 1 | |
| | P7 | 46 | 8 | 16-9 | SHOWN | " - " 2 | |
| | P8 | 46 | 8 | 15-9 | SHOWN | " - " 3 | |
| | P9 | 46 | 8 | 14-9 | SHOWN | " - " 4 | |
| | P10 | 32 | 5 | 19-9 | SHOWN | CAP | C |
| | P11 | 8 | 4 | 19-0 | 2-0 | " | |
| | P12 | 8 | 4 | 30-0 | 2-0 | " | |
| | P13 | 16 | 4 | 18-9 | 2-0 | " | |
| | P14 | 16 | 11 | 30-0 | SHOWN | " | |
| | P15 | 48 | 11 | 36-0 | SHOWN | " BUNDLED BARS | |
| | P16 | 88 | 5 | 18-6 | SHOWN | " | D |
| | P17 | 56 | 5 | 33-9 | SHOWN | " | E* |
| P18 | 32 | 5 | 27-9 | SHOWN | " | E* | |
| P19 | 48 | 5 | 22-6 | SHOWN | " | E* | |

DIMENSIONS IN BENDING DETAILS ARE OUT TO OUT.
* = SEE CUTTING DIAGRAM



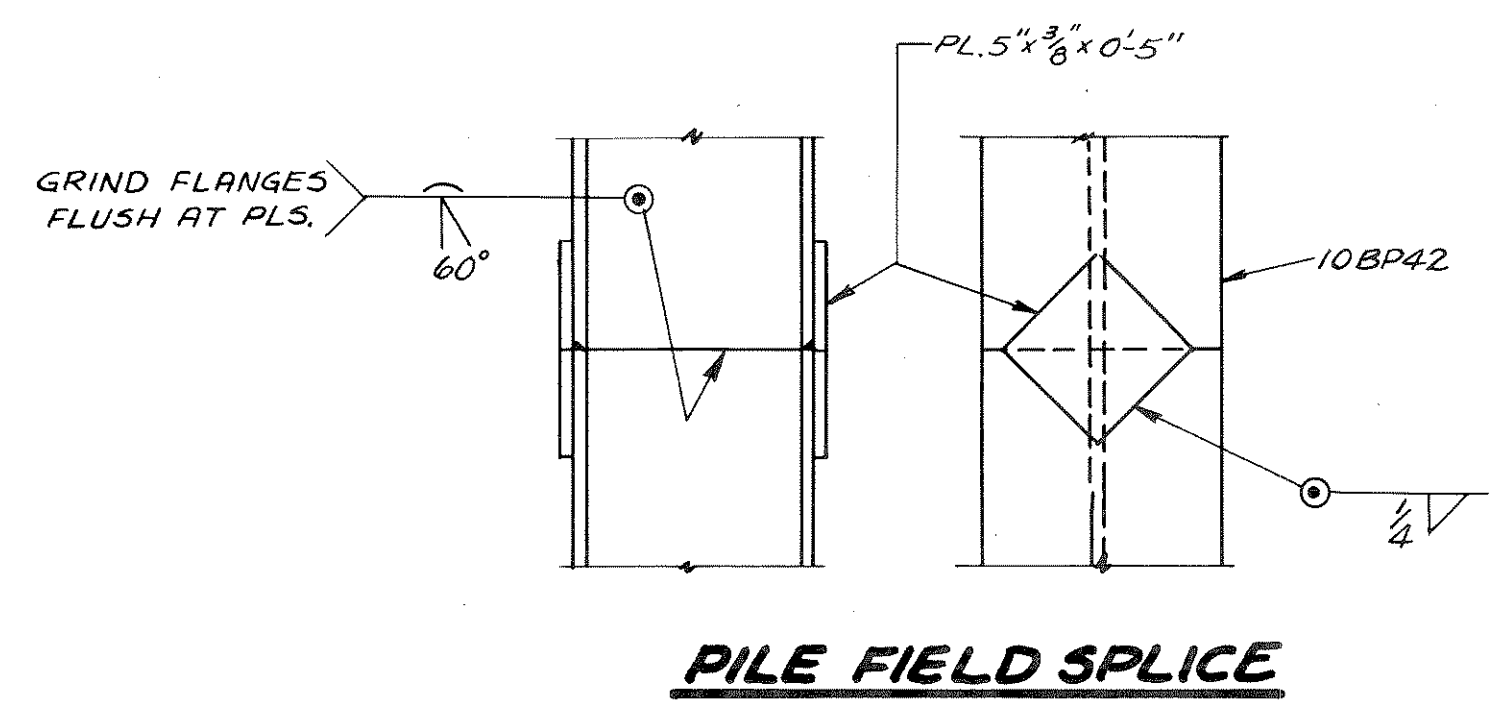
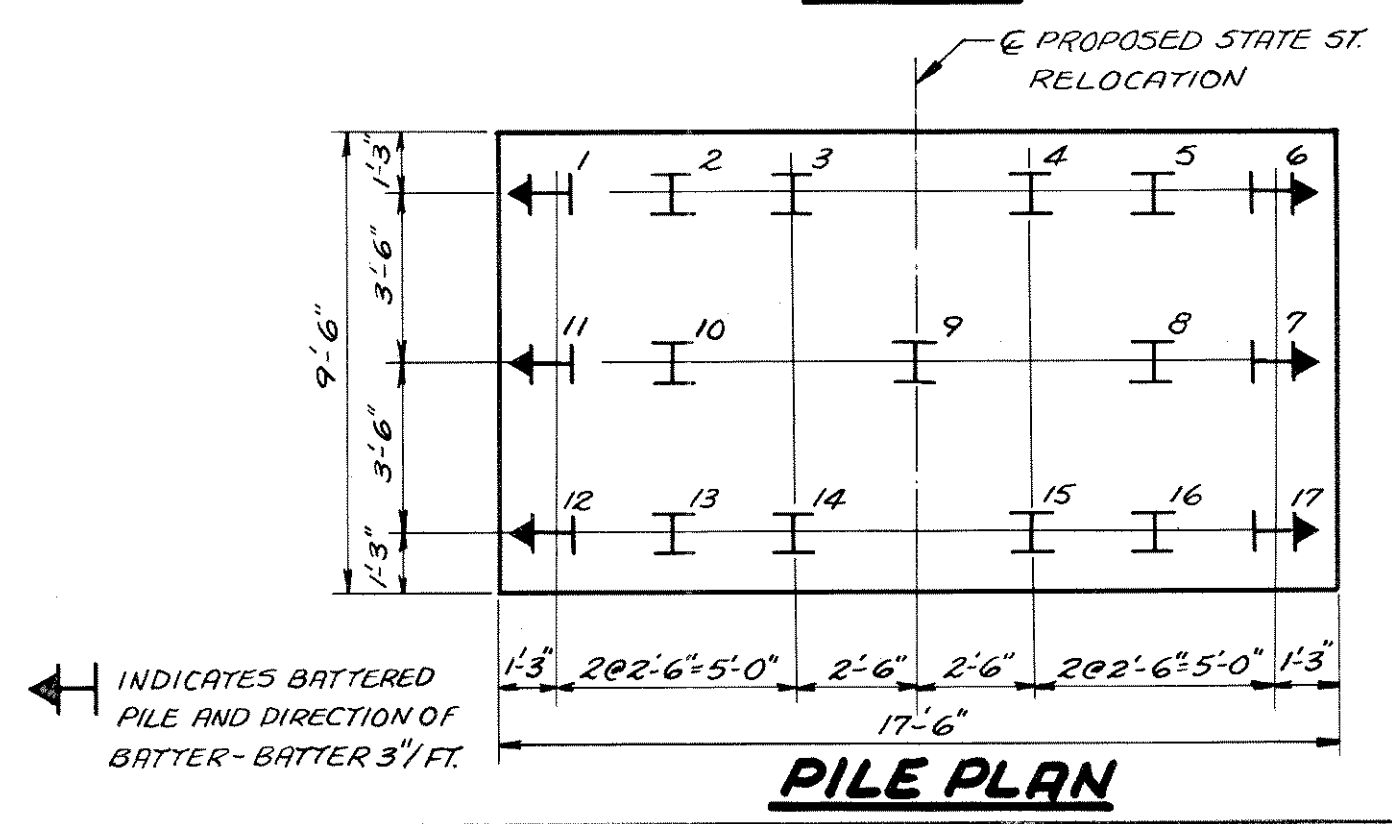
PIER 1 EL. 1231.69
PIER 2 EL. 1231.77
PIER 3 EL. 1231.84
PIER 4 EL. 1231.91

ALL PILES 10BP42
PIERS 1, 2, & 3, (18'-0" LONG) PIER 4, (20'-0" LONG)
DRIVE TO A MIN. BEARING VALUE OF 55 TONS PER PILE



7- P17 BARS MAKE 2 SET 1 - 16 SET 1 REQ'D. (56 P17 BARS)
4- P18 BARS MAKE 2 SET 2 - 16 SET 2 REQ'D. (32 P18 BARS)
6- P19 BARS MAKE 2 SET 3 - 16 SET 3 REQ'D. (48 P19 BARS)

NOTE: AFTER CUTTING BEND ALL BARS AS SHOWN IN DETAIL "E".



| | | | |
|-------------------|---------------------------------------|----------------|---------------------|
| REVISED | STATE HIGHWAY COMMISSION OF WISCONSIN | | |
| | PIERS | | |
| | DESIGN SPEC. A.R.S.H.O. 61 | LOADING A20-44 | CONCRETE SPEC. 1963 |
| | DATE 9-23-64 | DESIGN J.B. | DRAWN J.M. CKD J.B. |
| STRUCTURE B-35-15 | | SHEET 12 OF 14 | |