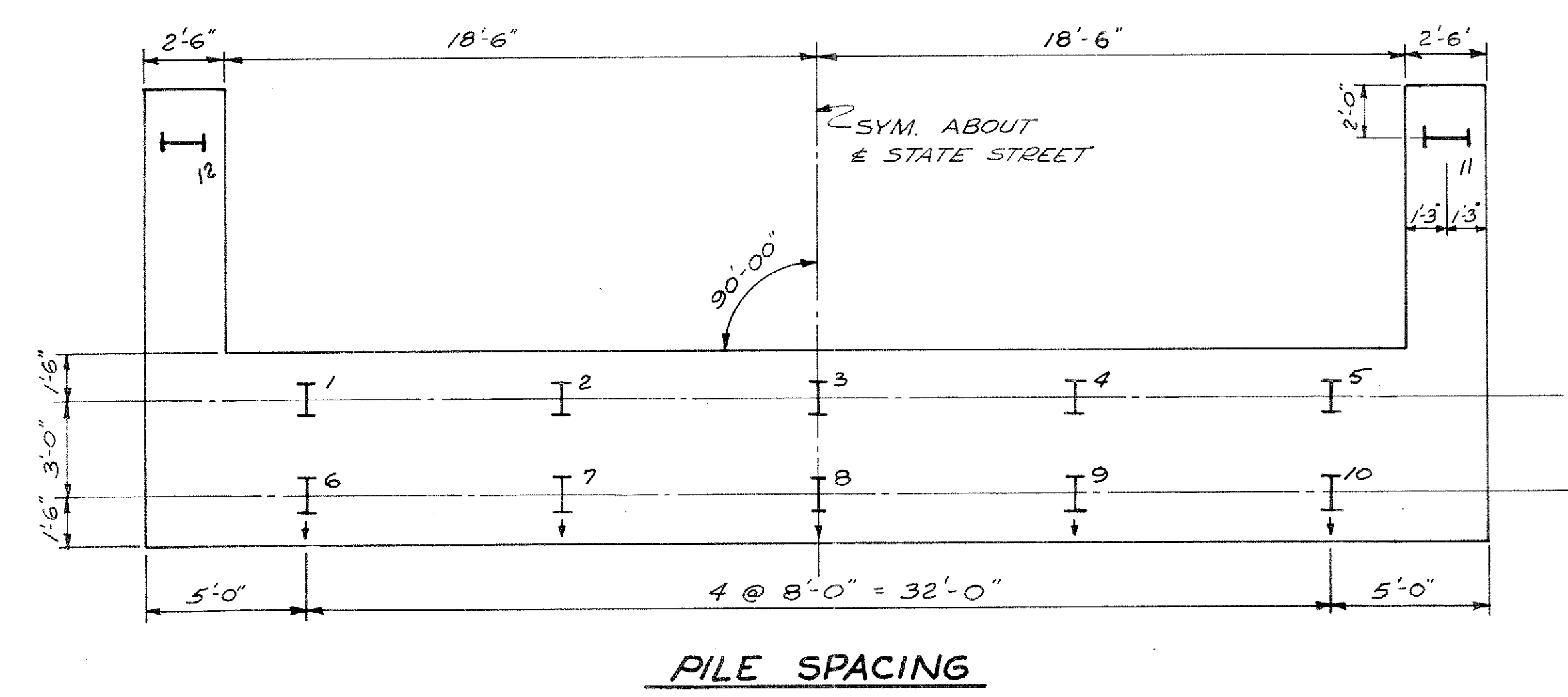
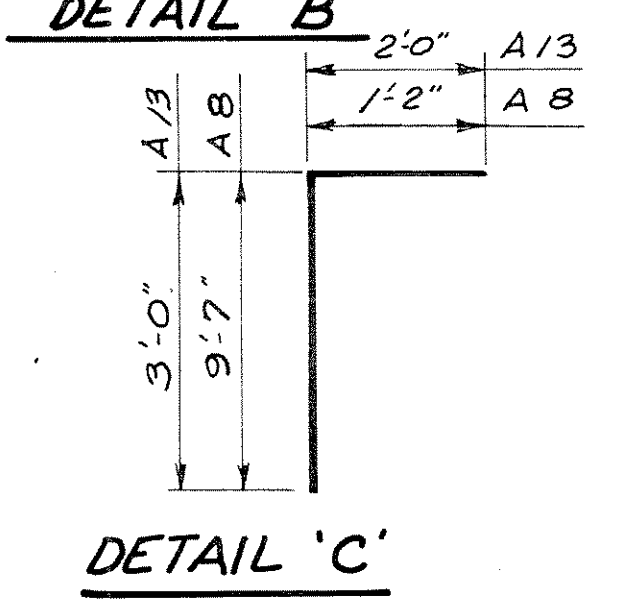
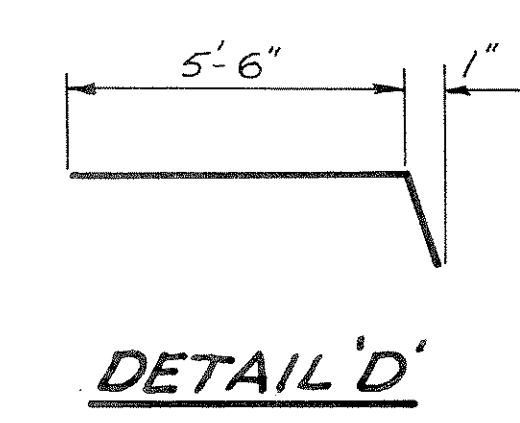
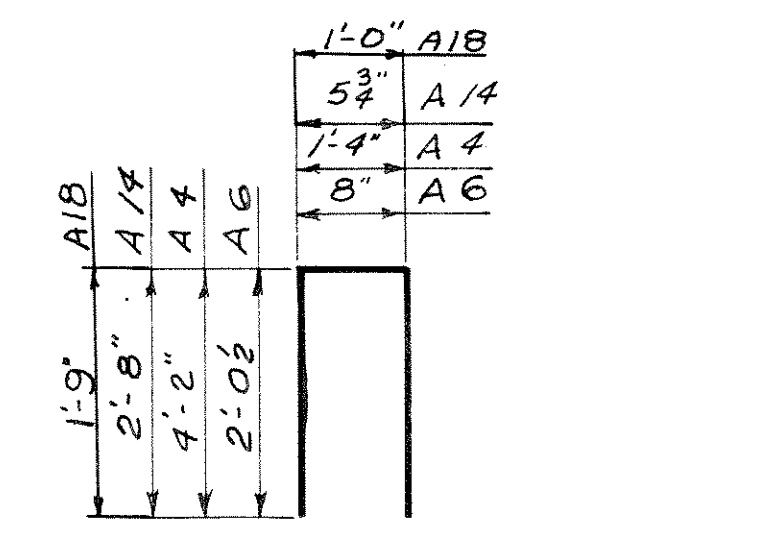
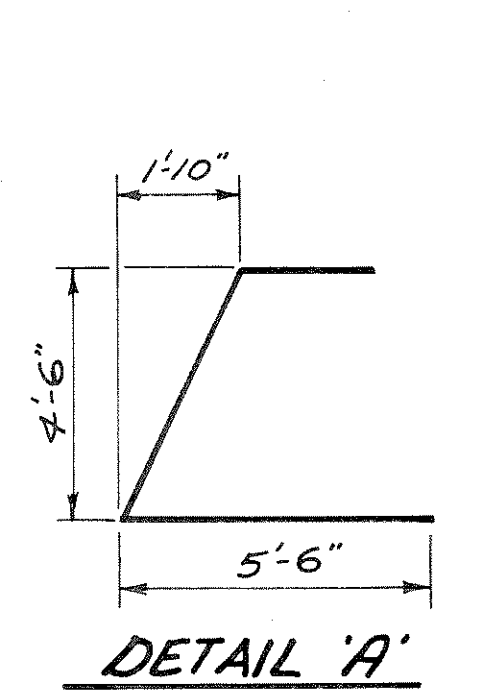
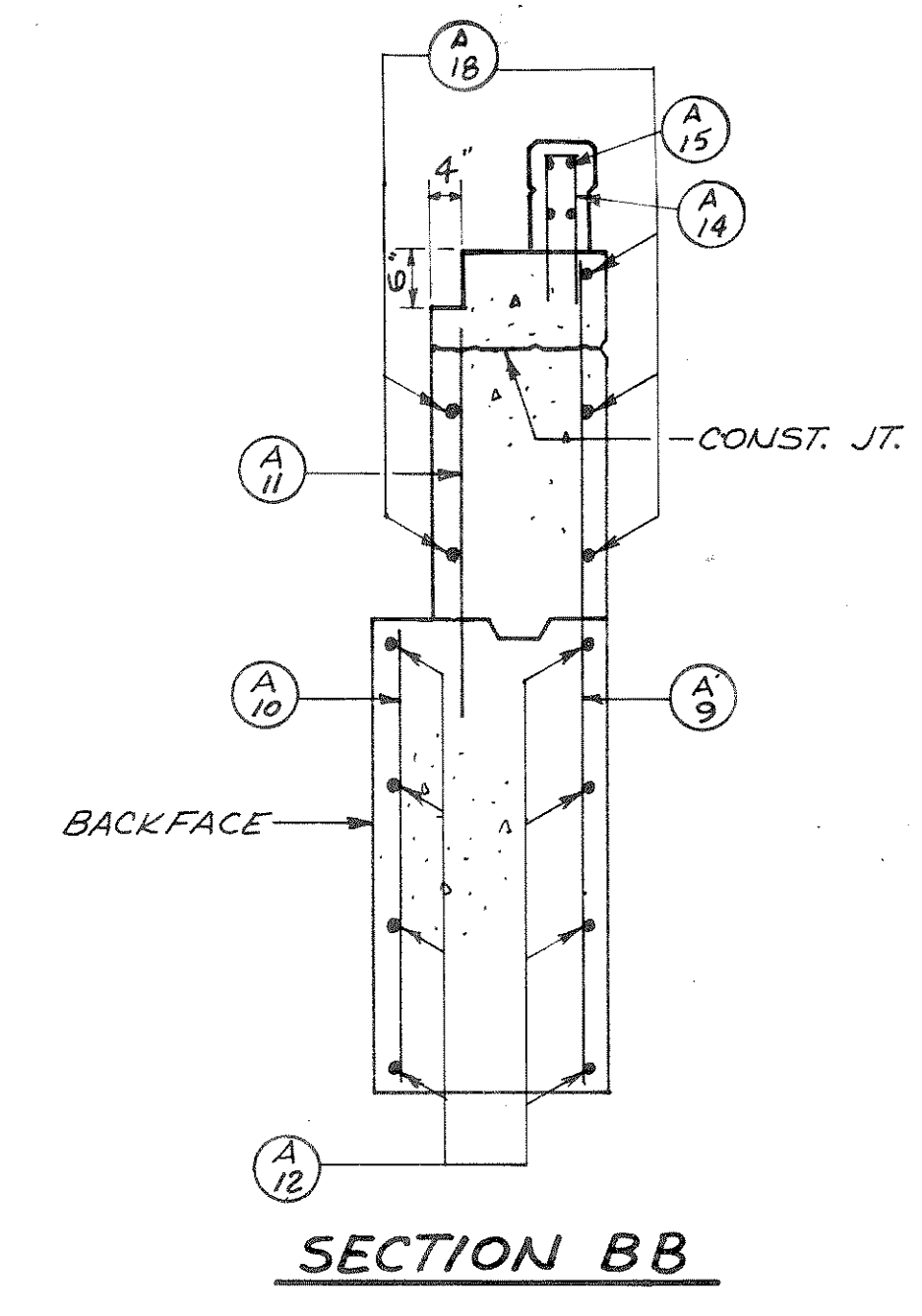
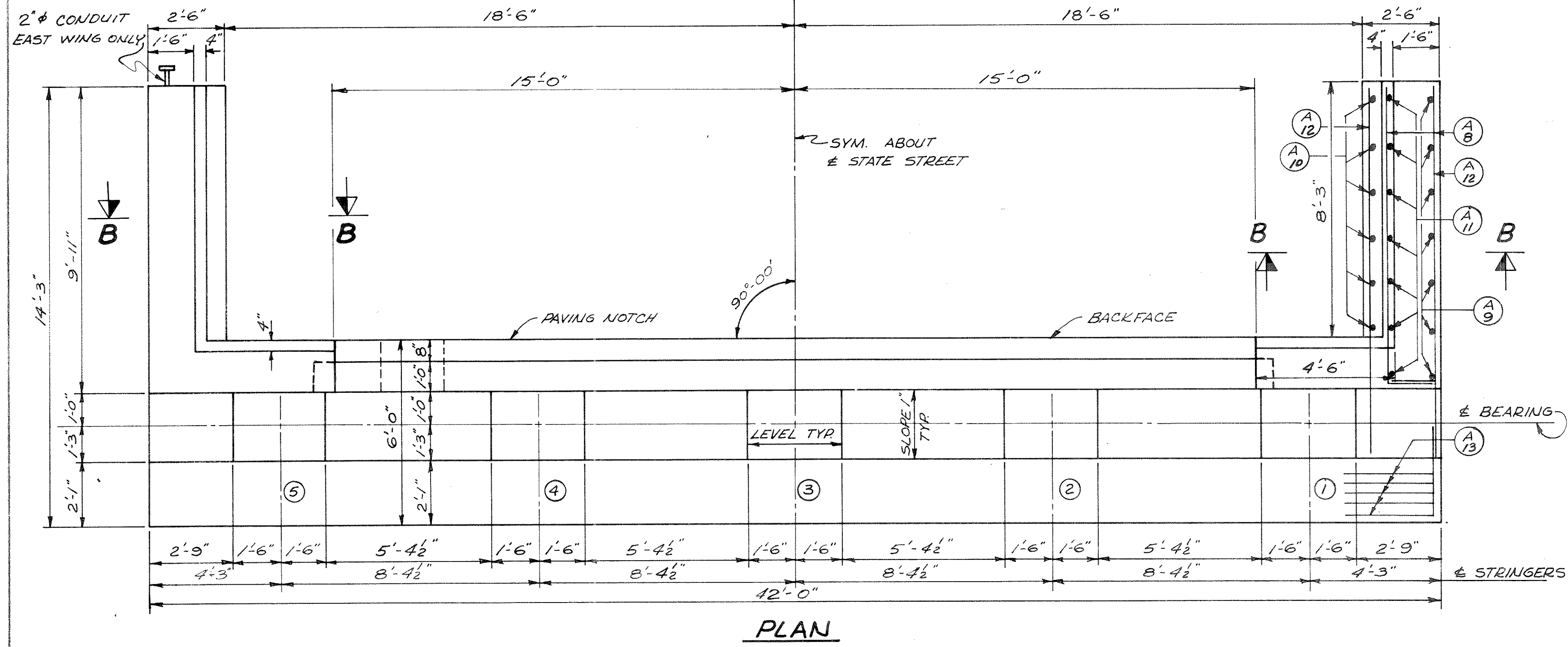
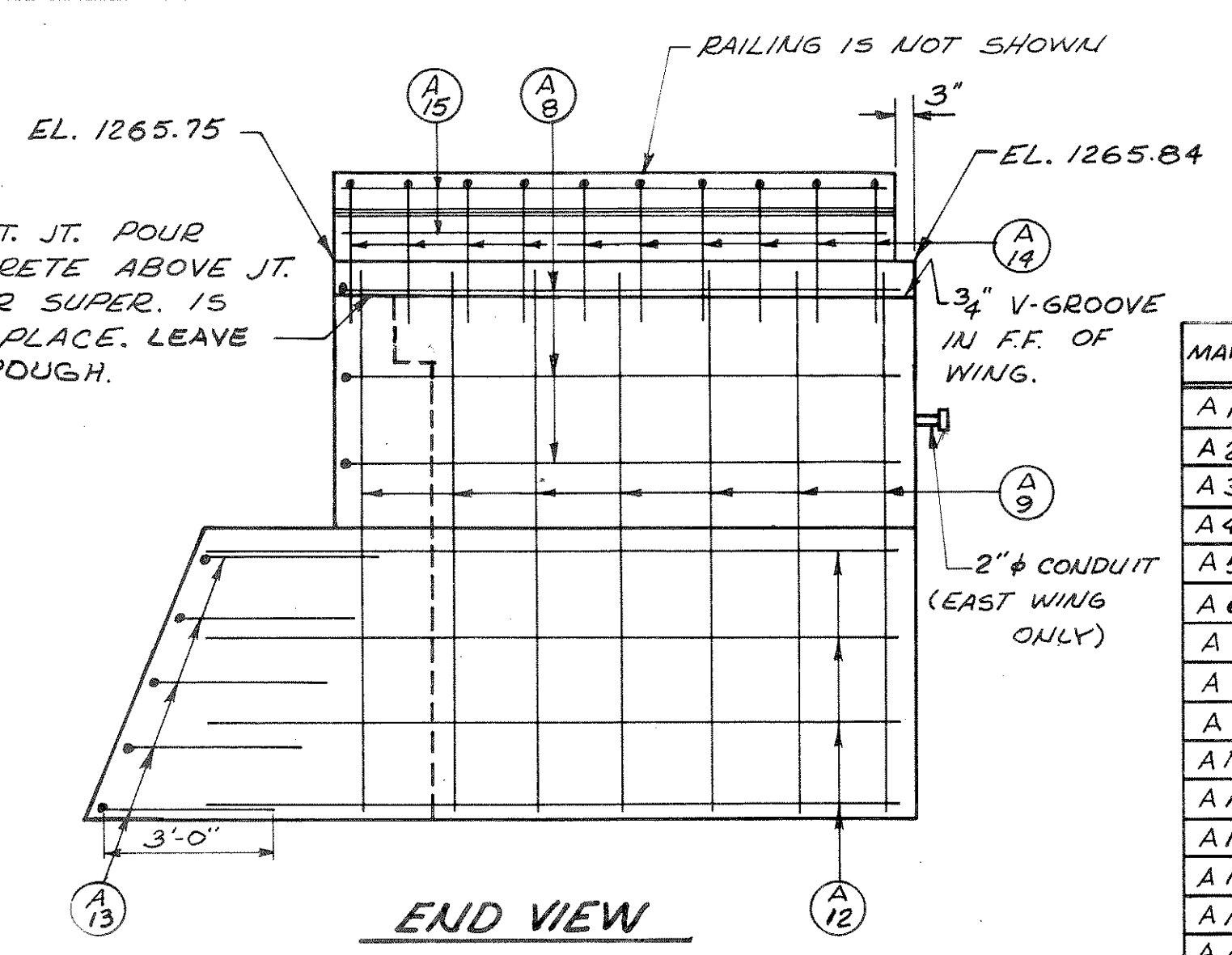
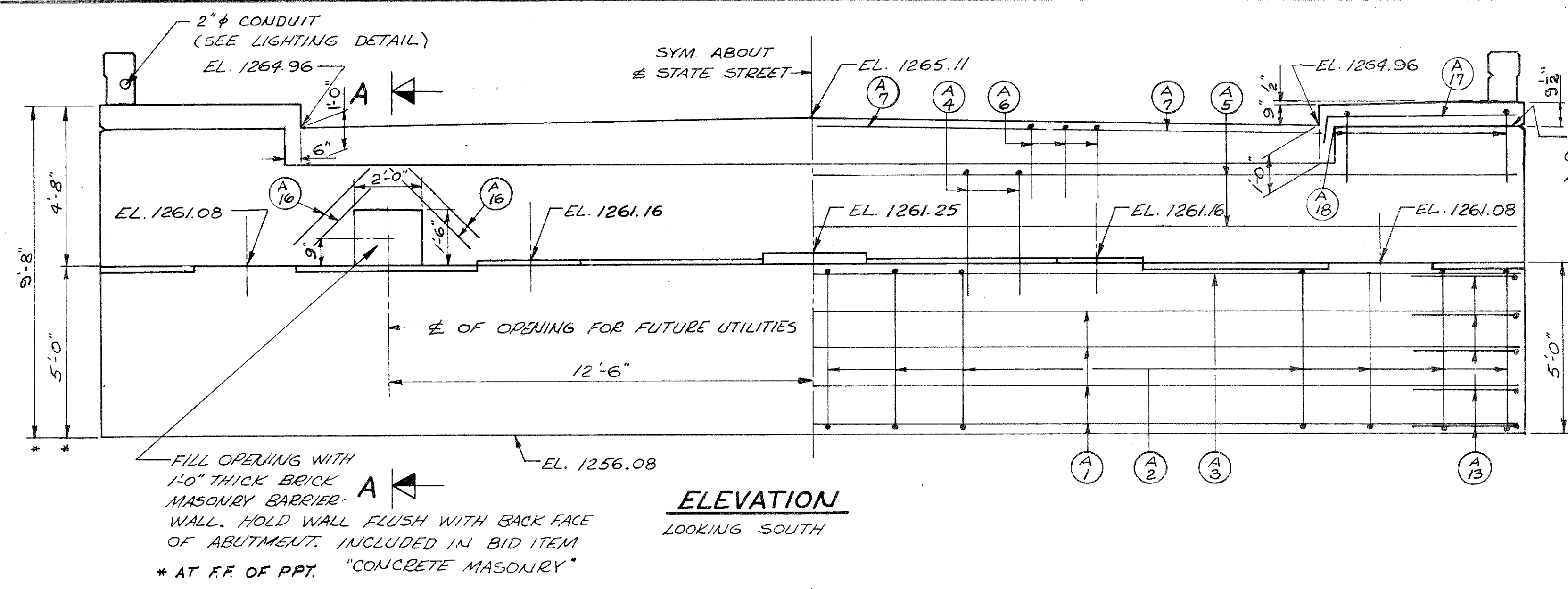


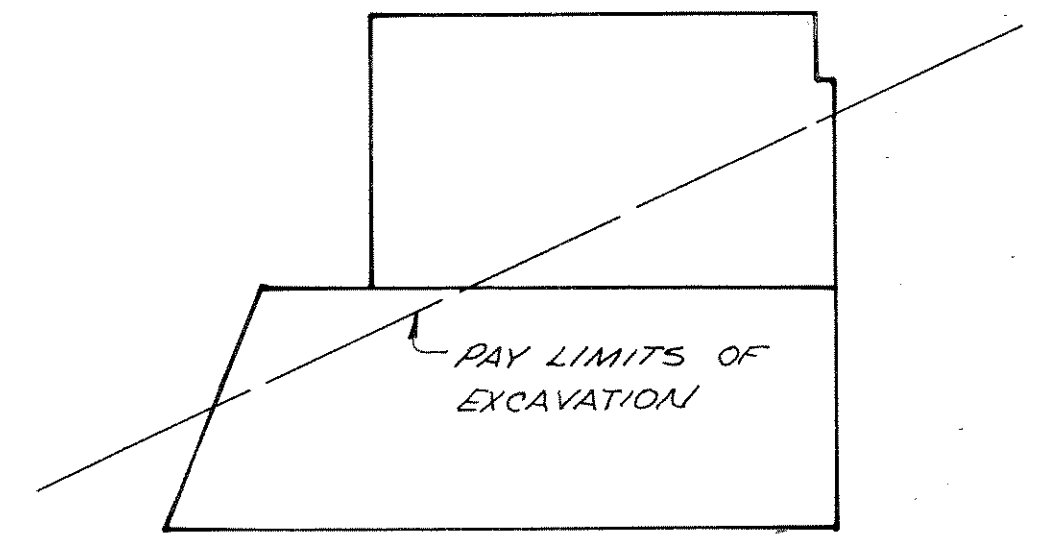
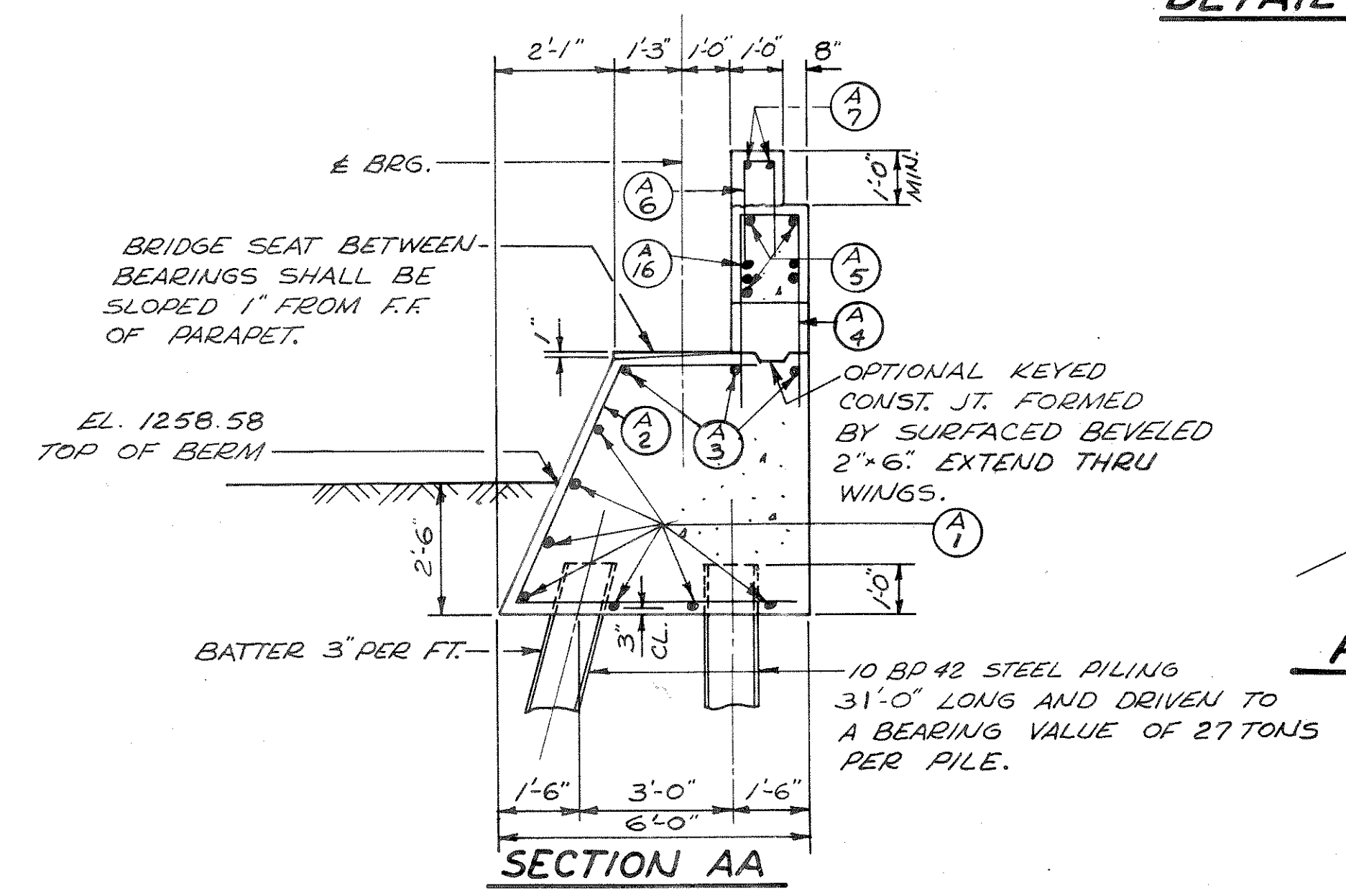
BILL OF BARS 1950 #

DIMENSIONS IN BENDING DETAILS ARE OUT TO OUT.

MARK	NO	SIZE	LENGTH	SPACING	LOCATION	DET
A1	14	4	21-6	SHOWN	BODY - HORIZ.	
A2	22	4	13-3	2-0	" - VERT.	A
A3	6	6	21-6	SHOWN	" - HORIZ.	
A4	29	6	9-9	1-6	" - VERT.	B
A5	6	4	21-6	SHOWN	" - HORIZ.	
A6	30	5	4-9	1-0	" - VERT.	B
A7	8	4	8-0	SHOWN	" - HORIZ. DO NOT LAP	
A8	10	4	10-9	1-6	WINGS - HORIZ.	C
A9	14	4	8-6	1-6	" - VERT.	
A10	12	4	4-6	1-6	" - "	
A11	14	4	4-3	1-6	" - "	
A12	16	4	11-3	1-6	" - HORIZ.	
A13	10	4	5-0	SHOWN	WINGS & BODY	C
A14	20	5	5-9	1-0	RAIL PARAPET	B
A15	8	5	9-3	SHOWN	" - "	
A16	8	5	2-6	SHOWN	AT OPENING	
A17	4	4	6-0	10	SDWK - TRANS	D
A18	8	4	4-6	1-6	" - "	B



I DENOTES BATTERED PILES



PAY LIMITS FOR "EXCAVATION FOR STRUCTURES"

REVISED	STATE HIGHWAY COMMISSION OF WISCONSIN
	SOUTH ABUTMENT
DESIGN SPEC. A.A.S.H.O. 61	LOADING H20-44
DATE 9-23-64	CONSTR. SPEC. 1963
DESIGN B	DRAWN R.J.B. CKD. J.B.
STRUCTURE B-35-15	SHEET 11 OF 14