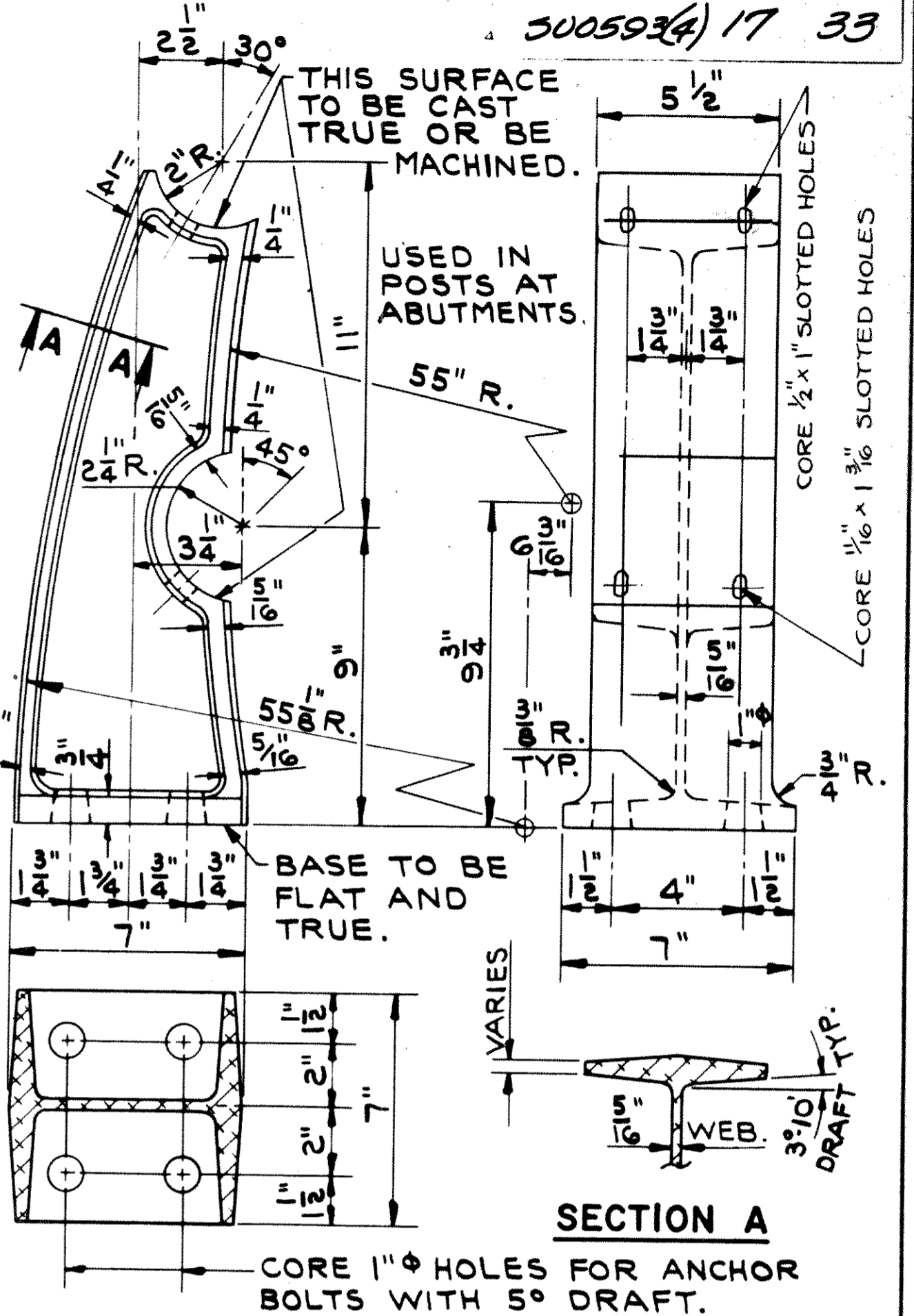
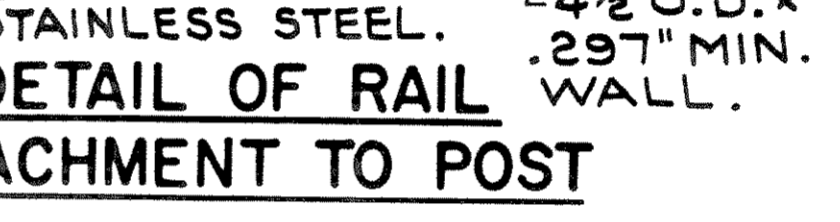
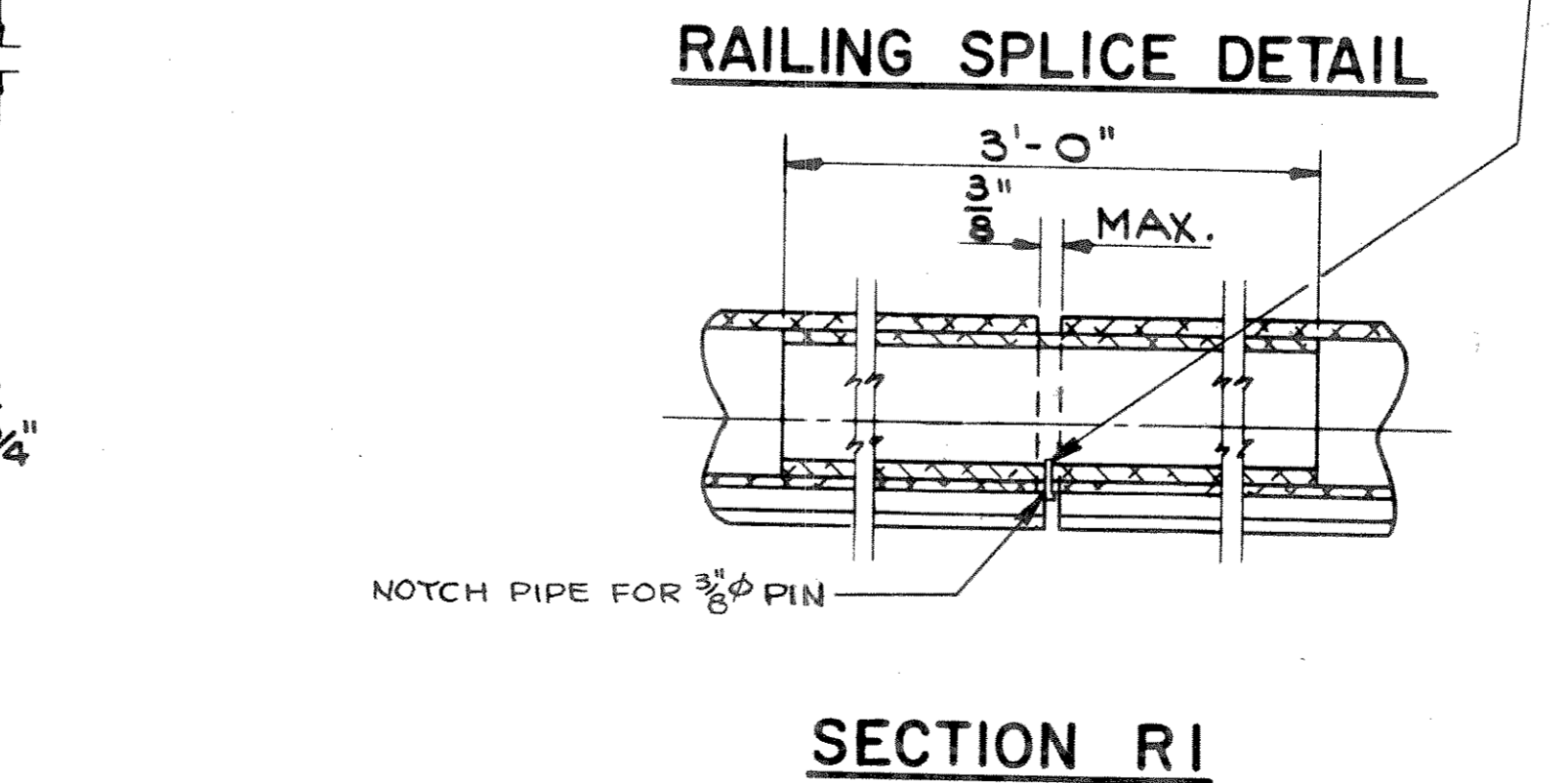
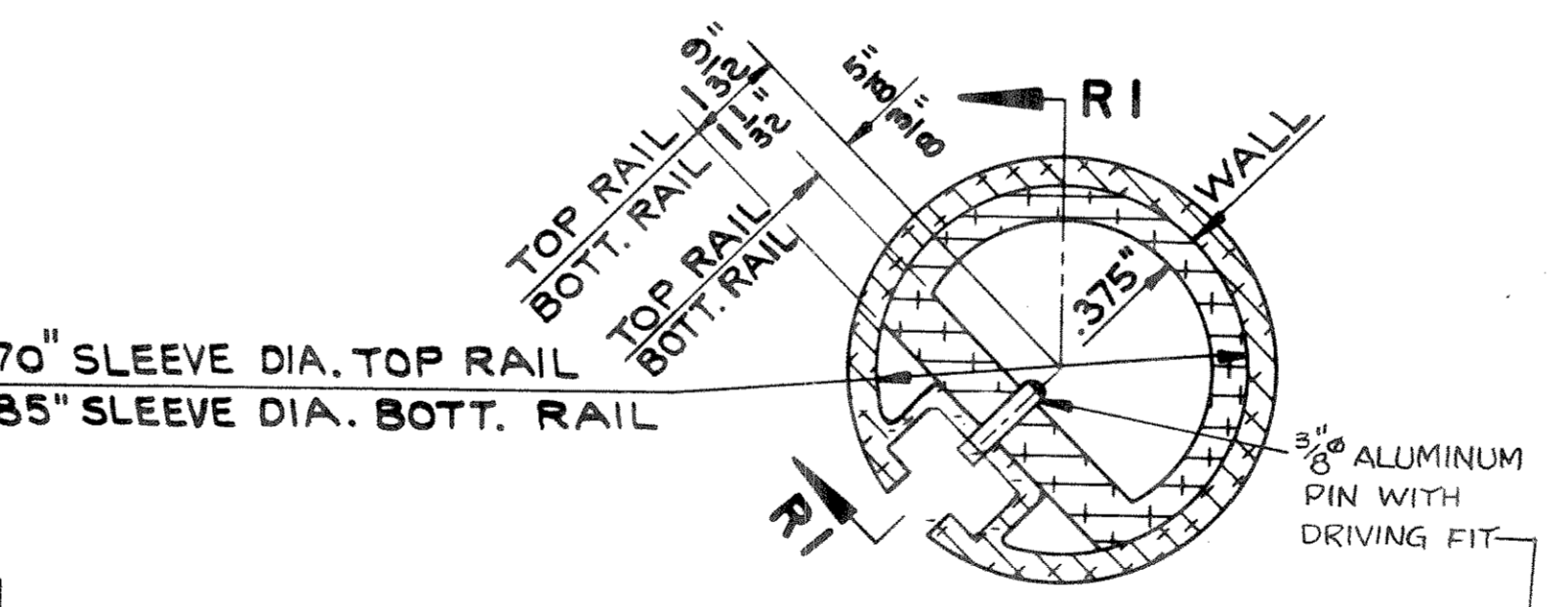
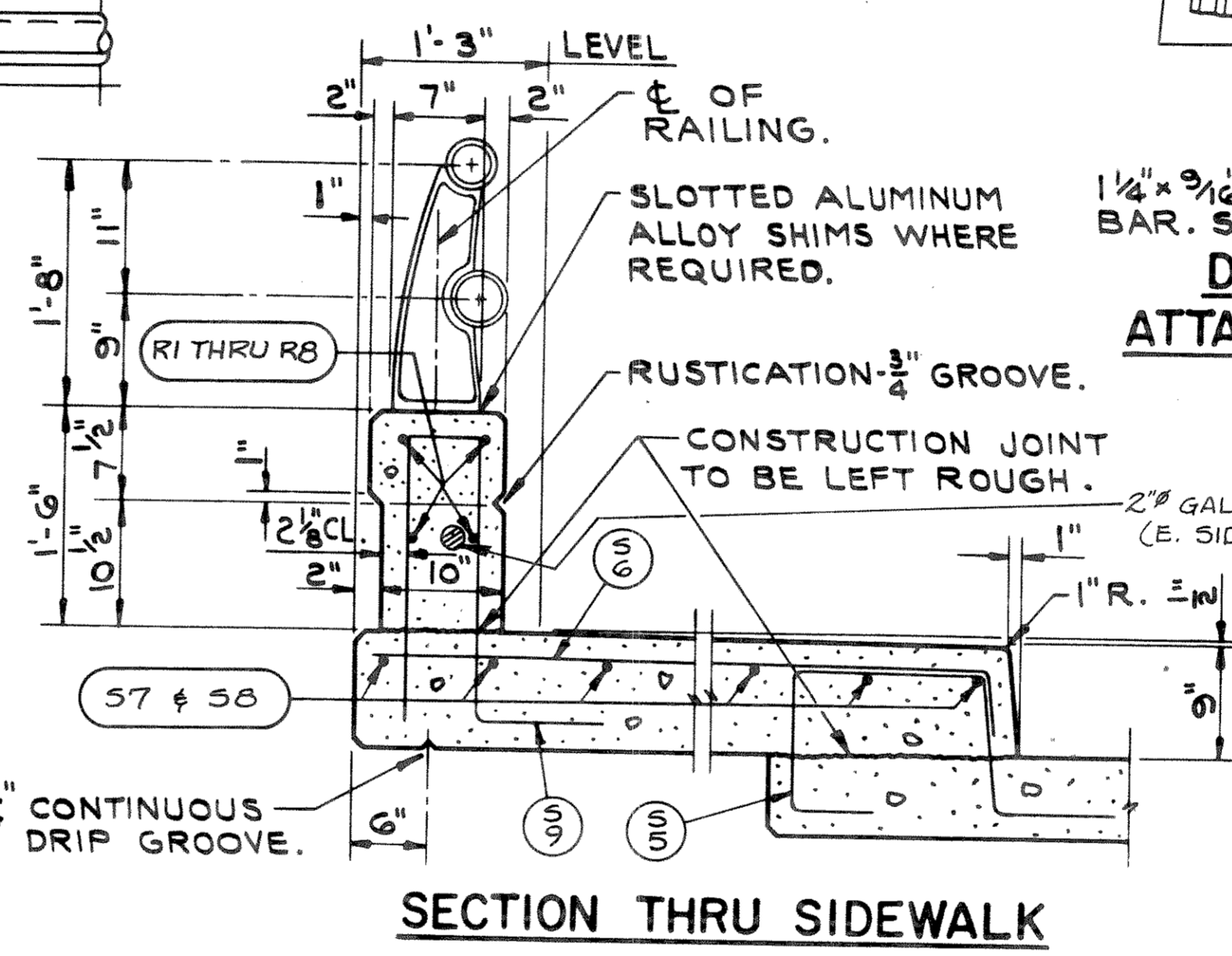


ANCHOR BOLT SETTING DETAILS

THE SHANK AND ROOT OF THREAD DIAMETER FOR ANCHOR BOLTS SHALL BE A MINIMUM OF 0.62 INCHES.



- GENERAL NOTES**
1. WHEN PARAPETS AND CURBS ARE POURED CONTINUOUSLY FROM END TO END THEY SHALL BE SEPARATED AT THE DEFLECTION JOINTS BY A PIECE OF 1/8" ZINC OR ALUMINUM PLATE CUT AS SHOWN IN SECTION "B" BY SHADED AREA. IF CONSTRUCTION JOINTS IN PARAPET AND CURBS ARE USED AT THE DEFLECTION JOINTS ONE SIDE OF JOINT SHALL BE COATED WITH BITUMINOUS PAINT AND PLATE SEPARATORS MAY BE OMITTED.
 2. ALL POST SPACINGS ARE TAKEN HORIZONTALLY ALONG CL. OF RAILING AT BASE OF POSTS.
 3. RAILING SPLICES SHALL BE LOCATED APPROXIMATELY AT 1/4 POINTS BETWEEN POSTS.
 4. ALUMINUM SHIMS SHALL BE USED UNDER POSTS AND END PLATES WHERE REQUIRED FOR ALIGNMENT.
 5. RAILING SHALL BE FABRICATED IN TWO AND THREE PANEL LENGTHS.

NOTE A: FILL WITH NON-STAINING GRAY TWO COMPONENT POLYSULFIDE LIQUID POLYMER (GUN GRADE) WITH SURFACE PRIMER, MEETING APPROVAL OF THE ENGINEER.

REVISION	STATE HIGHWAY COMMISSION OF WISCONSIN
	TUBULAR ALUMINUM RAILING
	TYPE "H"
	A.A.S.H.O.'61
	1963
	9-23-64
	STD.
	J.B.
STRUCTURE	B-35-15
SHEET	7 OF 14