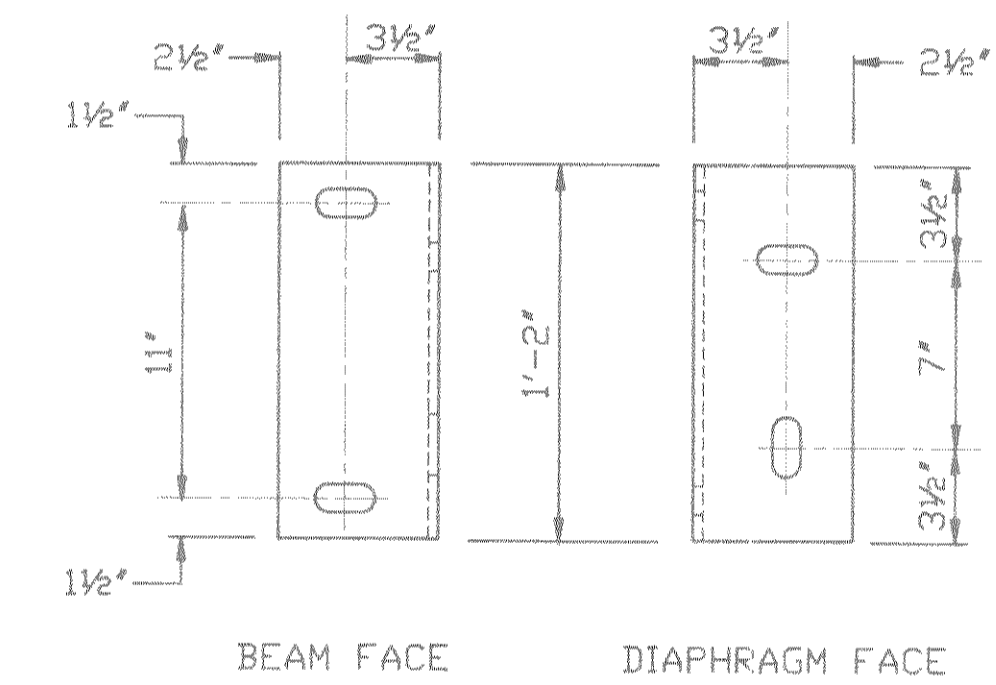


PARTIAL TRANSVERSE SECTION AT DIAPHRAGM

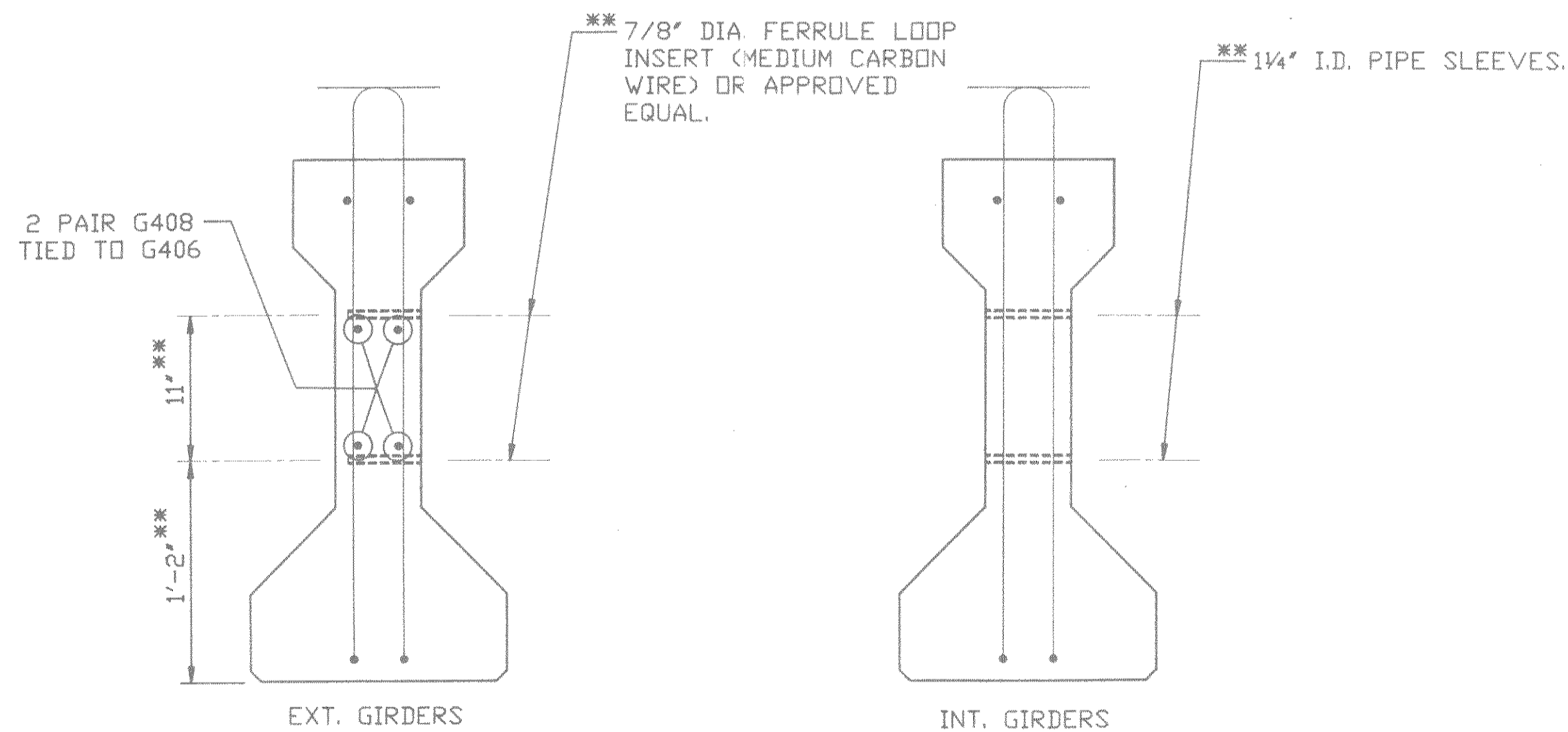
NOTES

STEEL DIAPHRAGMS MAY BE USED IN LIEU OF CAST-IN-PLACE CONCRETE DIAPHRAGMS. NO ADDITIONAL PAYMENT WILL BE MADE IF STEEL DIAPHRAGMS ARE USED.  
 ALL DIAPHRAGM STRUCTURAL STEEL SHALL BE ASTM A36. ALL BOLTS, NUTS AND WASHERS SHALL BE ASTM A325, TYPE 1.  
 ALL DIAPHRAGM STRUCTURAL STEEL SHOWN SHALL BE HOT-DIPPED GALVANIZED. ALL BOLTS, NUTS, SLEEVES AND WASHERS SHALL BE HOT-DIPPED GALVANIZED IN ACCORDANCE WITH ASTM A153 CLASS C. GALVANIZED NUTS SHALL BE TAPPED OVERSIZED IN ACCORDANCE WITH THE REQUIREMENTS OF ASTM A563 AND SHALL MEET THE REQUIREMENTS OF SUPPLEMENTARY REQUIREMENT S1 OF ASTM A563, LUBRICANT AND TEST FOR COATED NUTS.



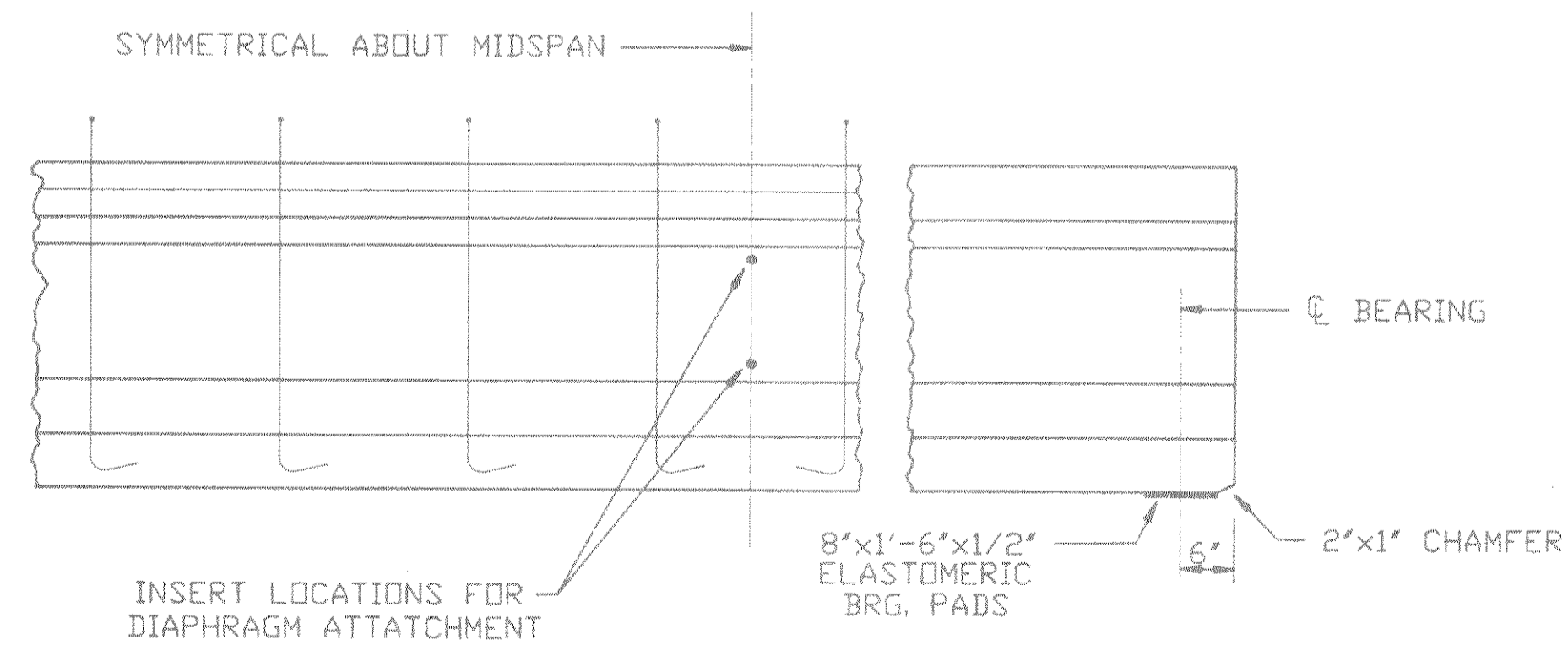
DIAPHRAGM SUPPORTS

6" x 6" x 3/8" ANGLES, WITH 1 1/8" x 2 1/4" SLOTTED HOLES.



DIAPHRAGM INSERT DETAILS

\*\* STEEL DIAPHRAGM ALTERNATE



36 INCH GIRDER ELEVATION

No.	Date	Revision	By
<b>BECHER-HOPPE Inc.</b> ENGINEERS, ARCHITECTS, PLANNERS 330 Fourth Street Wausau, WI. 54402			
STATE OF WISCONSIN DEPARTMENT OF TRANSPORTATION			
<b>STRUCTURE B-35-104</b>			
Const. Spec.:	WI. 1989	Drawn By:	DGK
Plans Checked:			
<b>STEEL DIAPHRAGM ALTERNATE</b>		SHEET 6 of 7 <b>X82697</b>	