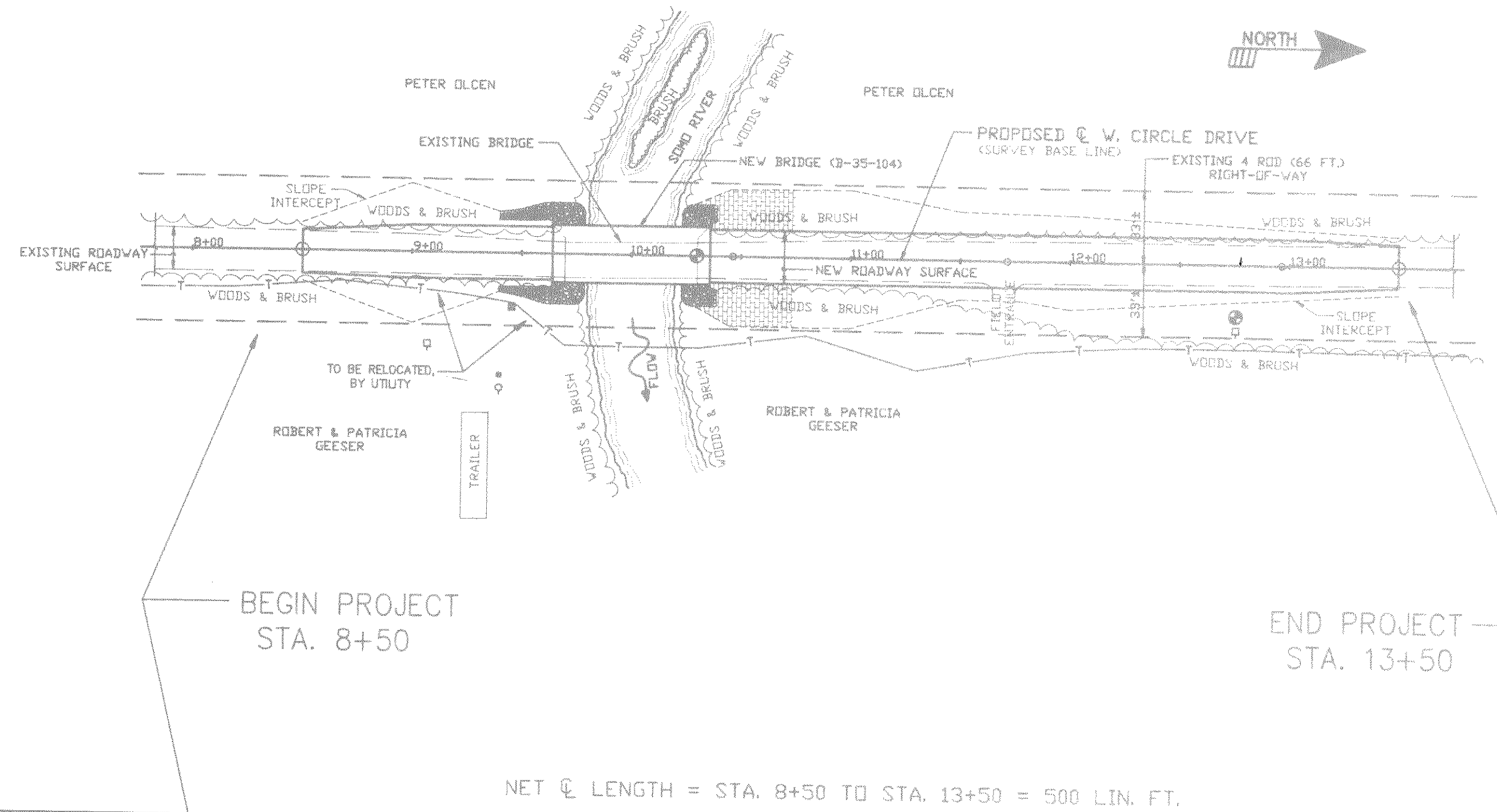


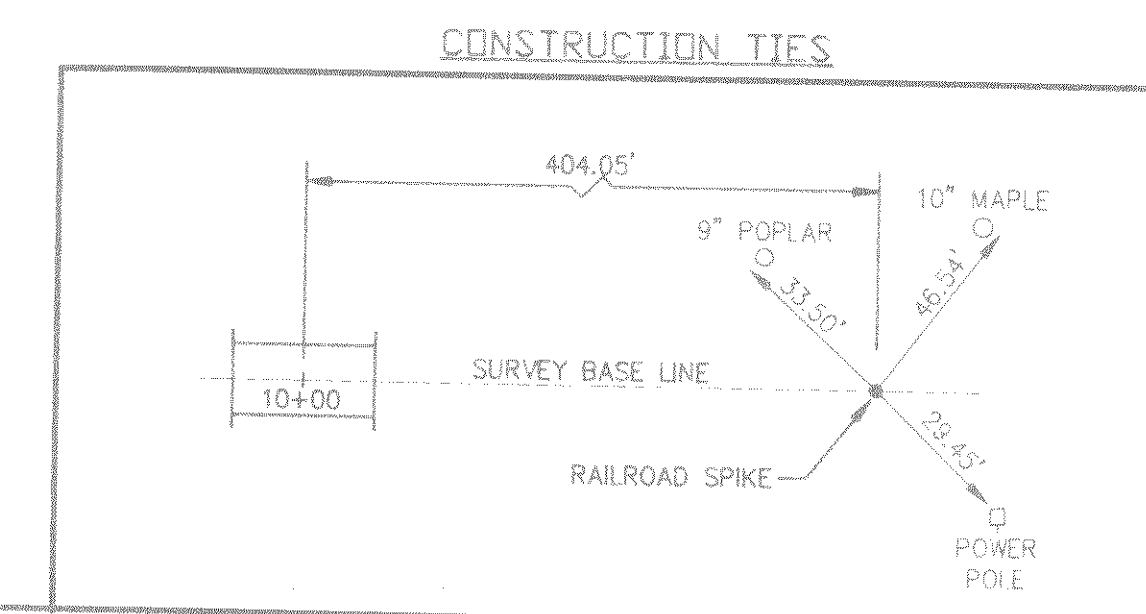
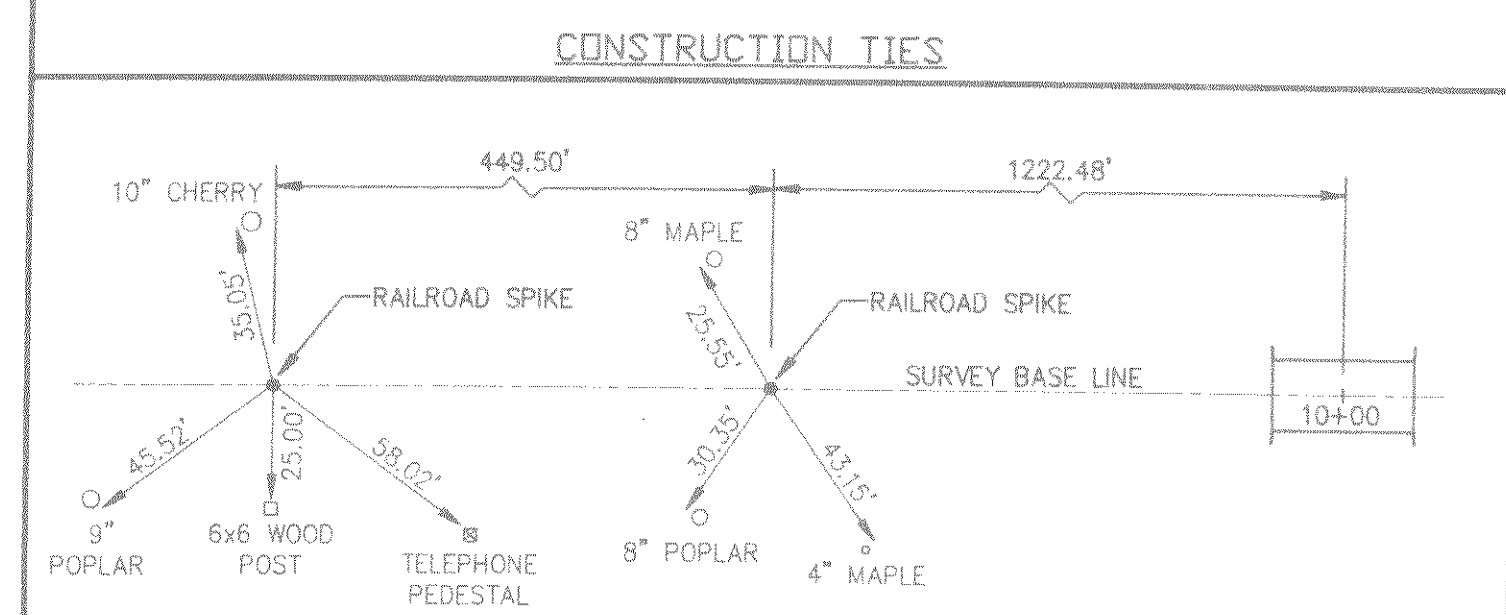
- LEGEND**
- POWER POLES, WITH OVERHEAD LINES
 - LIGHT POLES
 - ⊠ TELEPHONE PEDESTALS
 - WELLS
 - T — BURIED TELEPHONE LINES
 - ▨ HEAVY RIPRAP
 - ▨ SOD, ON FILL SLOPES STEEPER THAN 2 1/2:1.



BENCH MARKS

STA.	DESCRIPTION	*ELEV.
12+78	P.K. NAIL IN POWER POLE, 30' RIGHT	1556.03
10+30	EXISTING BRIDGE DECK, ON BASE LINE	1554.12

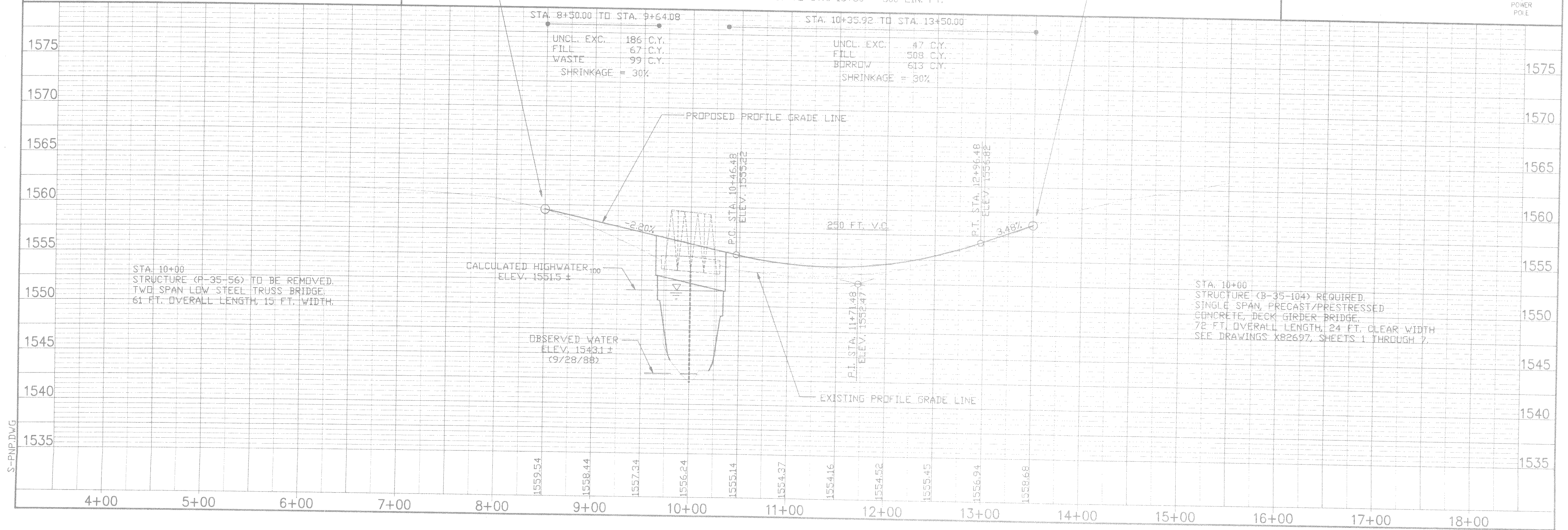
* U.S.G.S. DATUM



BEGIN PROJECT STA. 8+50

END PROJECT STA. 13+50

NET Q LENGTH = STA. 8+50 TO STA. 13+50 = 500 LIN. FT.



S:PNP.DWG