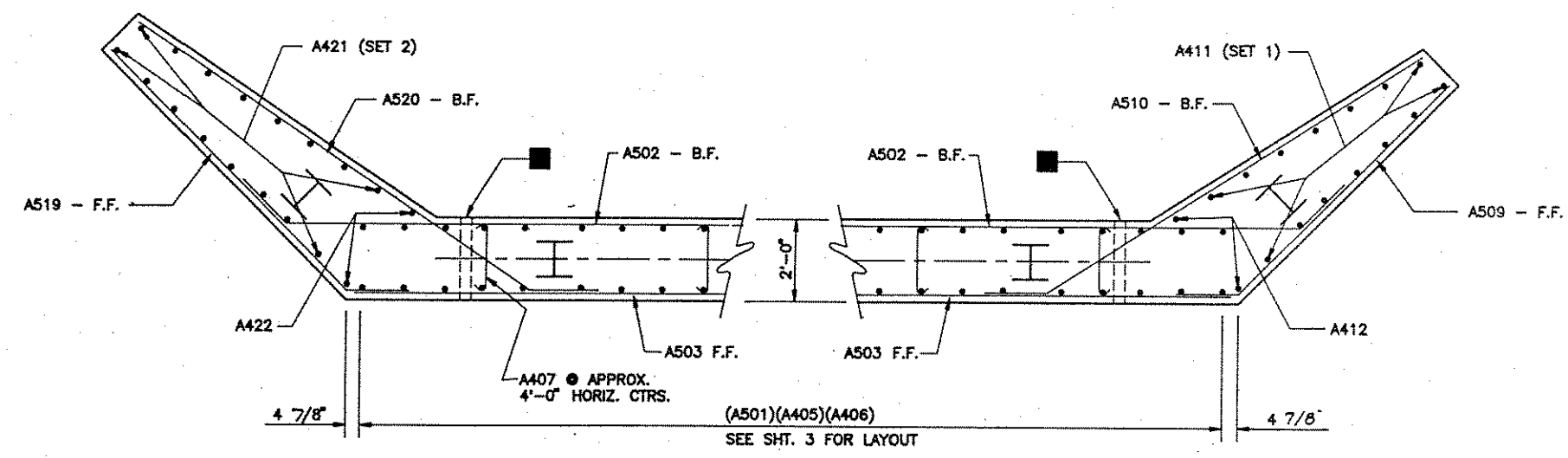


ELEVATION

WINGS 2 & 4

WINGS 1 & 3

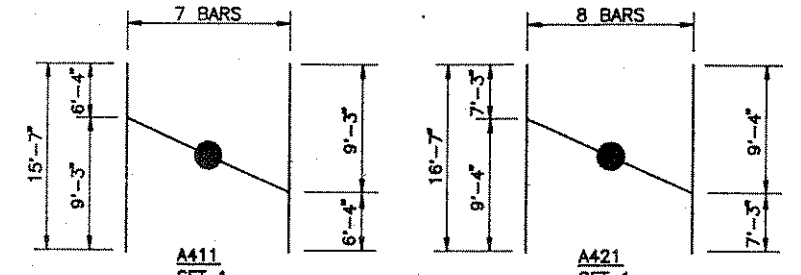
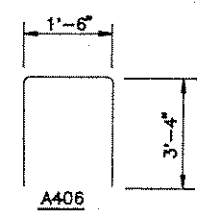
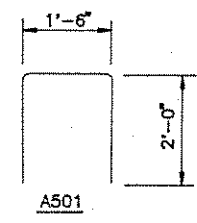


PLAN SECTION  
SHOWING BAR STEEL BELOW SEAT

BILL OF BARS 4,180 # (2 ABUTS.)

MARK	NO.	LENGTH	BENT	CUT	LOCATION
A501	62	5'-3"	X		BODY - VERT. - STIRRUP @ BTM.
A502	32	20'-4"	X		BODY - HORIZ. - B.F.
A503	32	17'-4"			BODY - HORIZ. - F.F.
A604	8	17'-7"			BODY - HORIZ. - TOP
A405	124	7'-1"			BODY - VERT. B.F. & F.F.
A406	62	8'-0"	X		BODY - VERT. - STIRRUPS @ TOP
A407	56	2'-5"	X		BODY - HORIZ. TIES
A508	52	2'-0"			BODY - VERT. - DOWELS @ TOP
A509	14	8'-8"	X		WINGS 1 & 3 - HORIZ. - F.F.
A510	14	12'-3"	X		WINGS 1 & 3 - HORIZ. - B.F.
A411	14	15'-7"		X	WINGS 1 & 3 - VERT. - F.F. & B.F.
A412	4	9'-5"			WINGS 1 & 3 - VERT. - F.F. & B.F.
A513	2	7'-2"	X		WINGS 1 & 3 - HORIZ. - F.F.
A514	2	5'-1"	X		WINGS 1 & 3 - HORIZ. - F.F.
A515	2	3'-1"	X		WINGS 1 & 3 - HORIZ. - F.F.
A516	2	10'-9"	X		WINGS 1 & 3 - HORIZ. - B.F.
A517	2	3'-10"			WINGS 1 & 3 - HORIZ. - B.F.
A518	4	7'-11"	X		WINGS 1 & 3 - TOP - F.F. & B.F.
A519	16	9'-8"	X		WINGS 2 & 4 - HORIZ. - F.F.
A520	16	13'-1"	X		WINGS 2 & 4 - HORIZ. - B.F.
A421	16	16'-7"		X	WINGS 2 & 4 - VERT. - F.F. & B.F.
A422	4	9'-5"			WINGS 2 & 4 - VERT. - F.F. & B.F.
A523	2	8'-8"	X		WINGS 2 & 4 - HORIZ. - F.F.
A524	2	5'-4"	X		WINGS 2 & 4 - HORIZ. - F.F.
A525	2	6'-0"			WINGS 2 & 4 - HORIZ. - B.F.
A526	4	8'-6"	X		WINGS 2 & 4 - TOP - F.F. & B.F.
A427	6	3'-3"			ALL WINGS - VERT. CORNERS

BAR DIMENSIONS ARE OUT TO OUT OF BAR.  
THE FIRST DIGIT OF A BAR MARK SIGNIFIES THE BAR SIZE.

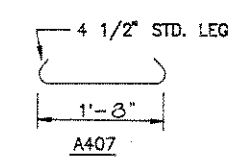


CUTTING DIAGRAMS

CUT ALL BARS ALONG THIS LINE. MAKE ALL CUTS NORMAL TO BAR AXIS. BUNDLE AND MARK CUT BARS WITH BAR AND SET NUMBER.

2" DIA. WEEP HOLE @ LOCATIONS SHOWN. USE FILTER CLOTH W/SELECT GRANULAR MATERIAL @ EA. HOLE (ON B.F. 12"x12"x12" MIN.) COST TO BE INCIDENTAL TO "CONCRETE MASONRY BRIDGES."

MARK	"A"	"B"
A502	1'-6"	1'-1"
A509	1'-6"	1'-1"
A510	1'-6"	10"
A513	1'-6"	1'-1"
A514	1'-4"	11"
A515	1'-4"	11"
A518	8"	4"
A519	1'-6"	1'-1"
A520	1'-6"	11"
A523	2'-8"	1'-10"
A524	2'-8"	1'-10"
A526	8"	4"
A516	1'-6"	10"



No.	Date.	Revision	By
STATE OF WISCONSIN DEPARTMENT OF TRANSPORTATION DIVISION OF HIGHWAYS			
STRUCTURE B-35-106			
Const. Spec.	WIS. '89	Drawn By	T.R.L.
		Plans Checked	S.R.L.
WINGS			SHEET 4 OF 6 X 82700