

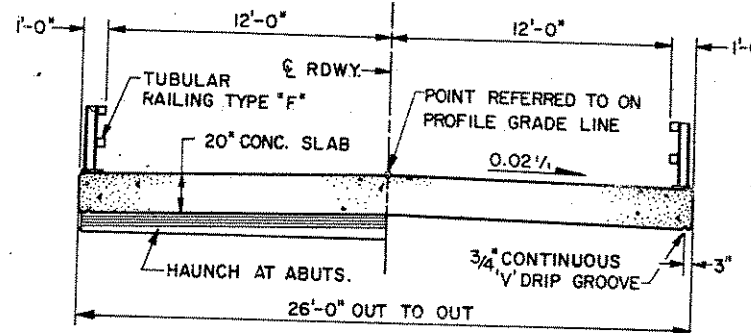
* ANCHOR ASSEMBLY FOR STEEL PLATE BEAM TYPE GUARD RAIL

PRAIRIE RIVER

STATE PROJECT NUMBER	SHEET NO.
9859-05-70	6.0

GENERAL NOTES

DRAWINGS SHALL NOT BE SCALED.
 BAR STEEL REINFORCEMENT SHALL BE EMBEDDED 2" CLEAR UNLESS OTHERWISE NOTED.
 THE SLOPES IN FRONT OF THE ABUTMENTS SHALL BE COVERED WITH HEAVY RIPRAP TO THE EXTENT SHOWN ON THIS SHEET.
 JOINT FILLER SHALL CONFORM TO A.A.S.H.T.O. DESIGNATION M153 TYPE I, II, OR III OR M213.
 THIS STRUCTURE WILL REPLACE P-35-75 WHICH IS A STEEL THRU GIRDER BRIDGE 41' LG. x 21.3' WIDE.



CROSS SECTION THRU ROADWAY

DESIGN DATA (CONT.)

HYDRAULIC DATA:

DRAINAGE AREA	63.3 SQ. MI.
HIGHWATER 100	EL. 1457.0
Q _{100-1,900} C.F.S.	Q BRIDGE 1,758 C.F.S.
	Q OVERFLOW 142 C.F.S.
WATERWAY AREA	182 SQ. FT.
VELOCITY	8.8 FPS.

ROADWAY OVERTOPPING

Q	12
HW	EL. 1456.3

TRAFFIC DATA

A.D.T. (1989)	60
A.D.T. (2010)	73
R.D.S.	55 MPH.

DESIGN DATA

STRUCTURE IS DESIGNED FOR A FUTURE WEARING SURFACE OF 20 P.S.F.

RATINGS:

DESIGN RATING	HS 20
INVENTORY RATING	HS 21
OPERATING RATING	HS 35
MAX. STD. PERMIT VEHICLE LOAD	210 KIPS

ALLOWABLE DESIGN STRESSES:

CONCRETE MASONRY - SLAB	f _c = 4,000 PSI
- OTHER	f _c = 3,500 PSI
HIGH STRENGTH BAR STEEL REINFORCEMENT - GRADE 60	f _y = 60,000 PSI

FOUNDATION DATA: ABUTMENTS TO BE SUPPORTED ON HP10x42 STEEL "H" PILES EST. 40'-0" LG. & DRIVEN TO A MIN. BEARING VALUE OF 40 TONS / PILE.

TOTAL ESTIMATED QUANTITIES

BID ITEMS	UNIT	S. ABUT.	N. ABUT.	SUPER	TOTAL
REMOVING OLD STRUCTURE STA. 15+04	L.S.				
EXCAVATION FOR STRUCTURES, BRIDGES	L.S.				
CONCRETE MASONRY, BRIDGES	C.Y.	28.3	28.3	66.4	123.0
HIGH STRENGTH BAR STEEL REINFORCEMENT, BRIDGES	LBS.	2,090	2,090	9,255	13,435
COATED HIGH STRENGTH BAR STEEL REINFORCEMENT, BRIDGES	LBS.			1,810	1,810
HEAVY RIPRAP	C.Y.	55	55		110
PROTECTIVE SURFACE TREATMENT	GAL.			5	5
GEOTEXTILE FABRIC, TYPE HR	S.Y.	85	85		170
STEEL PILING, DELIVERED AND DRIVEN, HP10x42	L.F.	240	240		480
TUBULAR RAILING TYPE "F" B-35-106	L.S.				1
NON-BID ITEMS					
FILLER	SIZE				1/2" & 3/4"
POLYVINYL CHLORIDE WATERSTOP	L.F.	33	33		66

LIST OF DRAWINGS

1. GENERAL PLAN
2. SUBSURFACE EXPLORATION
3. ABUTMENTS
4. WINGS
5. SUPERSTRUCTURE
6. TUBULAR RAILING TYPE "F"

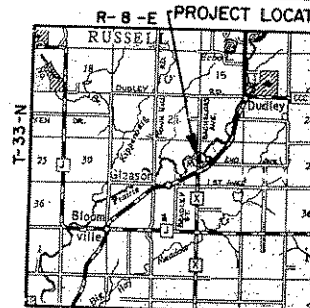
BRIDGE OFFICE CONTACT
 (608) 266-8486, DAVE BABLER

BENCH MARK LOCATION

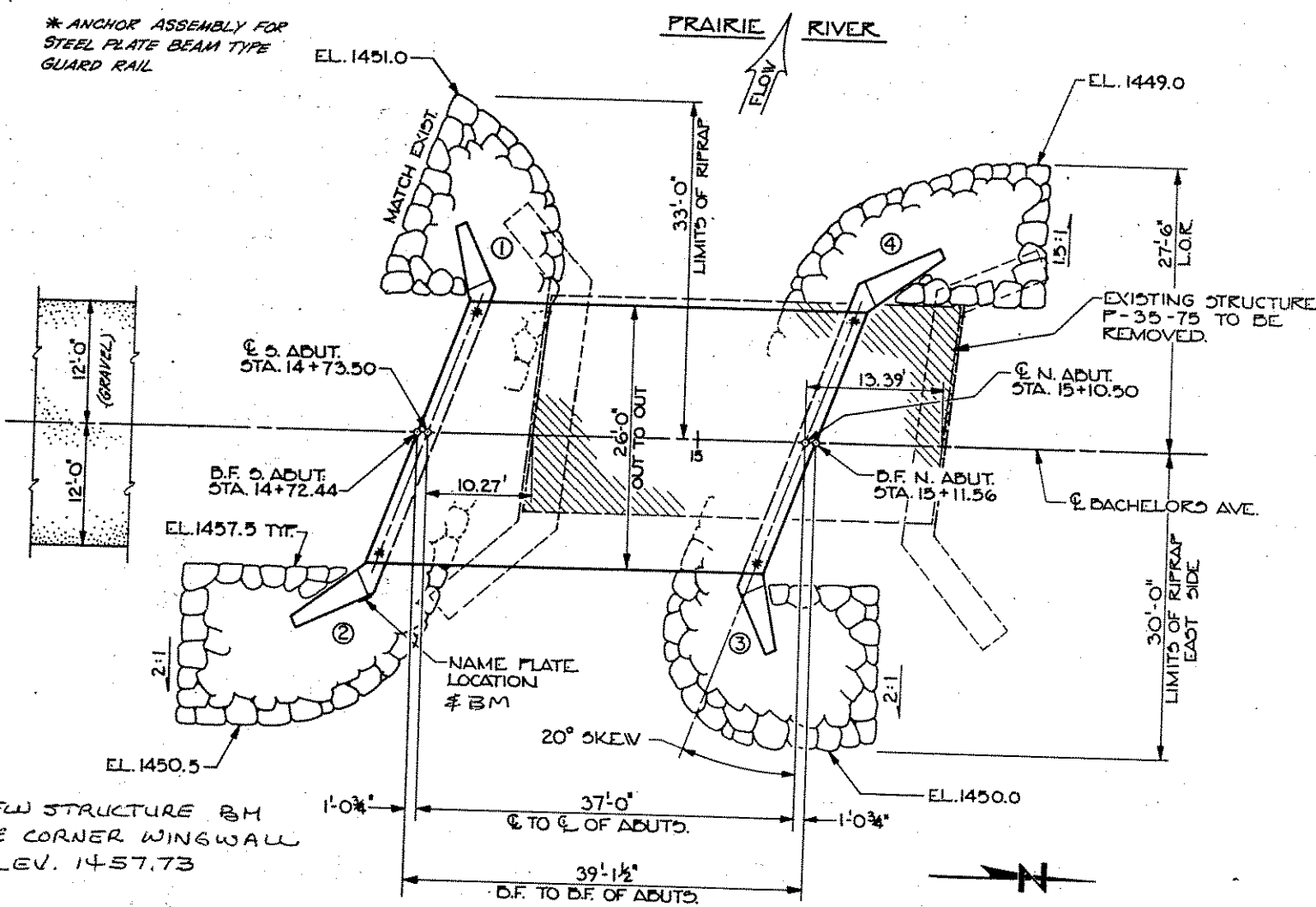
NO.	STA.	LOCATION	ELEV.
1	12+09.5	R.R. SPIKE IN 8" STUMP	35.5 RT. 1454.88
2	14+88	CHISELED "D" ON S.W. ABUT.	14.5 LT. 1455.70
		DOT MON. SE WINGWALL - NEW STRUC.	1457.73



PLANS PREPARED BY:
 BARRIENTOS & ASSOCIATES, INC.
 CONSULTING ENGINEERS
 3822 MINERAL PT. RD. - MADISON, WI. 53705
 PH. 608-238-6781

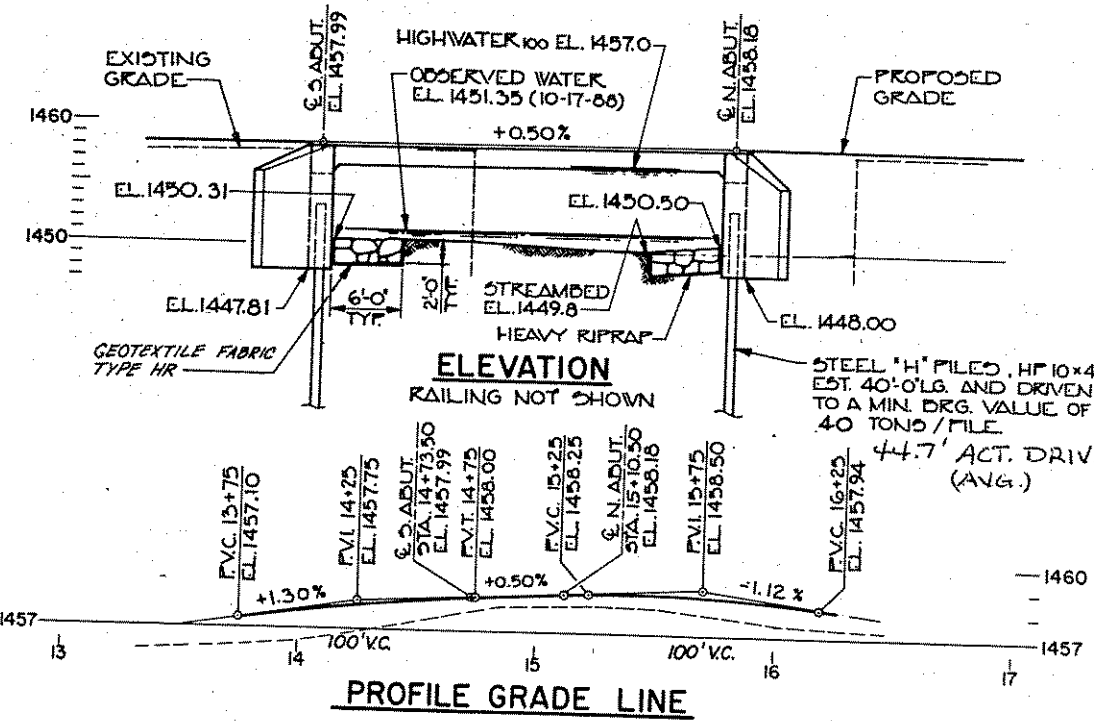


LAYOUT



PLAN

SINGLE SPAN CONCRETE SLAB



ELEVATION

RAILING NOT SHOWN

PROFILE GRADE LINE

No.	Date	Revision	By

STATE OF WISCONSIN
 DEPARTMENT OF TRANSPORTATION
 DIVISION OF HIGHWAYS

STRUCTURE B-35-106
BACHELORS AVE. OVER PRAIRIE R.

County LINCOLN	Town RUSSELL
Design Spec. A.A.S.H.T.O. '88	Load HS 20
Design J.T.T.	Const. Spec. WIS. '89
Drawn By O.K.L.	Plans Checked S.R.L.

Approved: *Stanley M. Wood*
 State Bridge Engineer Date: 11-16-89

GENERAL PLAN SHEET 1 OF 6
 X 82700