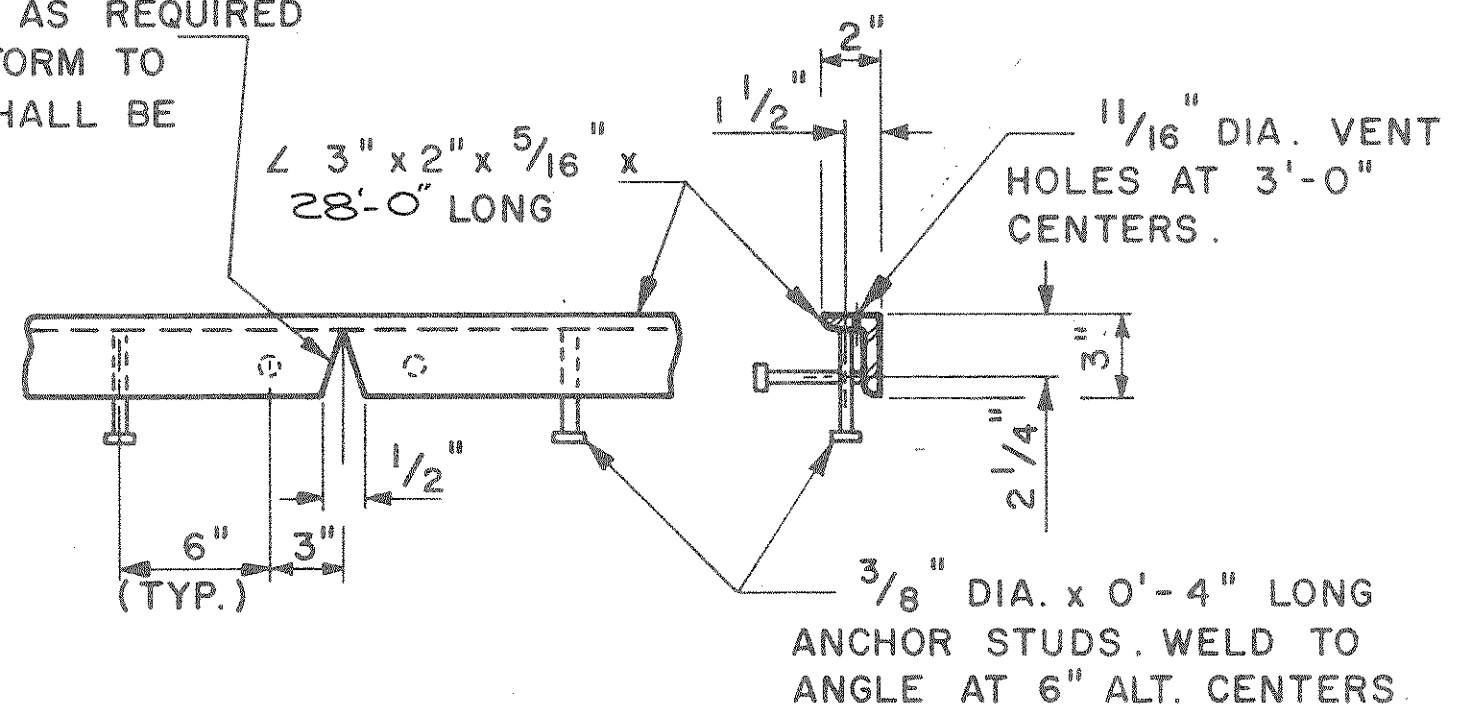


FIELD CUT 3" LEG OF ANGLE AS REQUIRED FOR BENDING ANGLE TO CONFORM TO ROADWAY CROWN. ONE CUT SHALL BE AT THE CROWN.

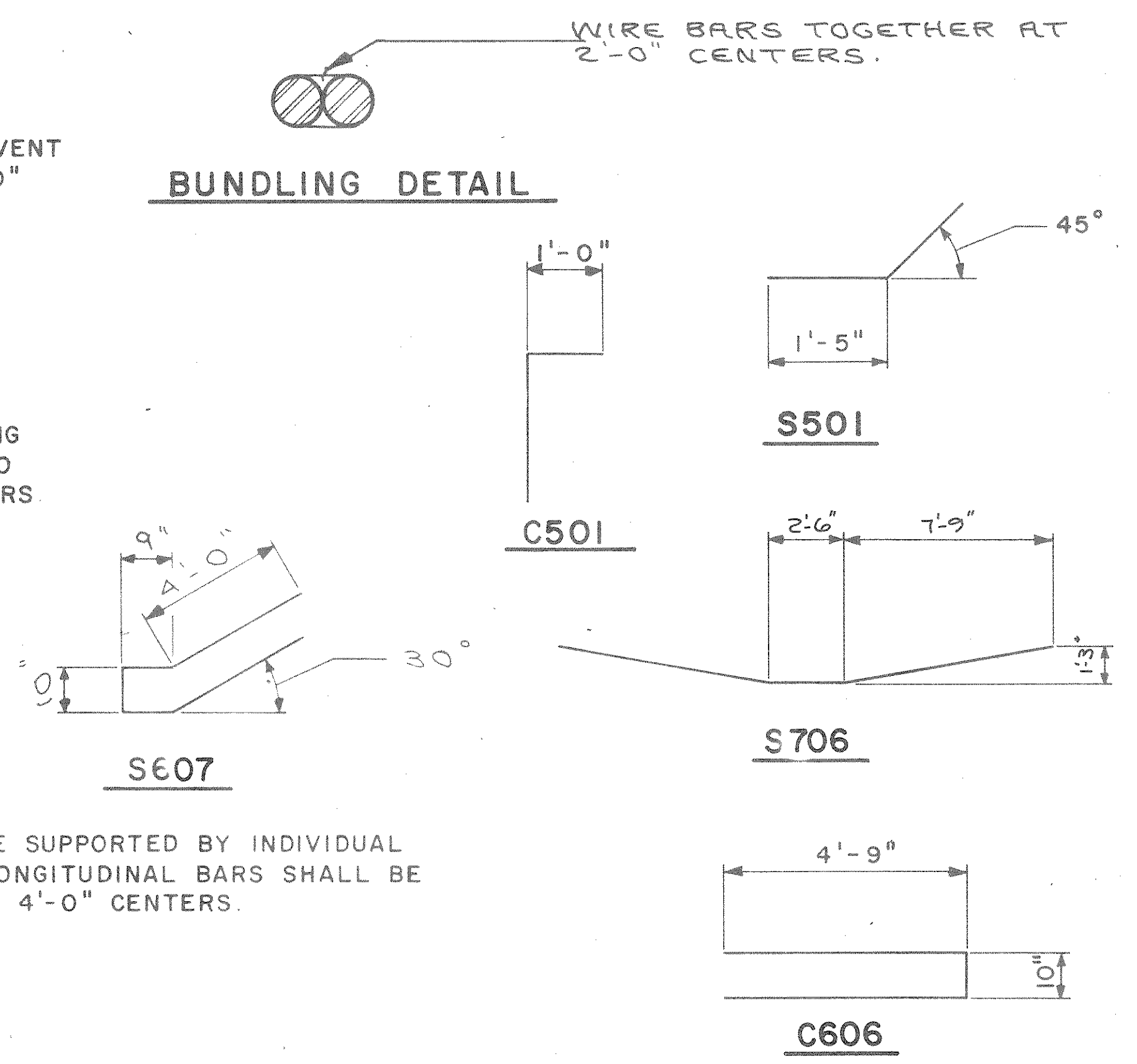


PROTECTION ANGLE DETAIL

NOTE: ANGLE AND STUDS SHALL BE PAID FOR AS "STRUCTURAL CARBON STEEL". NO PAINT REQUIRED.

NOTE: ALTERNATE TOP TRANSVERSE BARS IN SLAB SHALL BE SUPPORTED BY INDIVIDUAL BAR CHAIRS AT APPROXIMATELY 3'-0" CENTERS. BOTTOM LONGITUDINAL BARS SHALL BE SUPPORTED BY CONTINUOUS BAR CHAIRS AT APPROXIMATELY 4'-0" CENTERS.

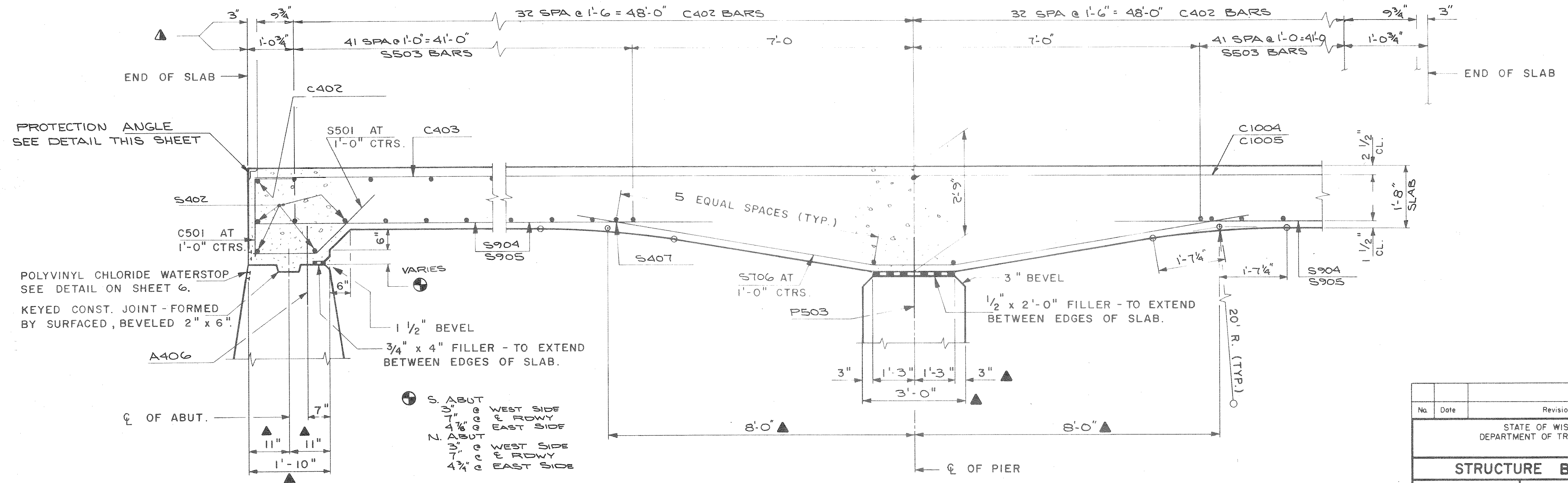
BUNDLING DETAIL



BILL OF BARS

DIMENSIONS IN BENDING DETAILS ARE OUT TO OUT OF BAR.

MARK	NO. REQ'D.	LENGTH	BENT	LOCATION	
NON-COATED BARS					TOTAL WT. = 18,490 LBS.
S501	52	3-5	X	DIAPH @ ABUT	HORIZ
S402	8	29-7		DIAPH @ ABUT	TRANS
S503	84	29-7		SLAB - BOTTOM	TRANS
S904	56	43-5		SLAB - BOTTOM	LONGIT
S905	50	35-10		SLAB - BOTTOM	LONGIT
S706	26	18-0	X	DIAPH @ PIER	LONGIT
S407	12	29-7		DIAPH @ PIER	TRANS
COATED BARS					TOTAL WT. = 11,650 LBS.
C501	52	3-2	X	DIAPH @ ABUT	VERT
C402	67	29-7		SLAB - TOP	TRANS
C403	52	27-9		SLAB - TOP @ ABUT	LONGIT
C1004	26	46-0		SLAB - TOP @ PIER	LONGIT
C1005	25	31-0		SLAB - TOP @ PIER	LONGIT
C606	24	10-0	X	SLAB - 1 PER POST	TRANS
C607	2	10-0	X	SLAB - 1 PER POST (WINGS 1 & 4 ONLY)	
C608	52	4-0		SLAB - 2 PER POST	LONGIT



PART LONGITUDINAL SECTION

▲ DIMENSIONS ARE GIVEN PARALLEL TO THE CL OF PRAIRIE DRIVE
▲ DIMENSIONS ARE GIVEN NORMAL TO THE CL OF THE SUBSTRUCTURE UNITS.

No.	Date	Revision	By
STATE OF WISCONSIN DEPARTMENT OF TRANSPORTATION			
STRUCTURE B-35-92			
Const. Spec.	WIS. 1981	Drawn By	LEN
		Plans Checked	JRL
SUPERSTRUCTURE			SHEET 9 OF 10
			X78813