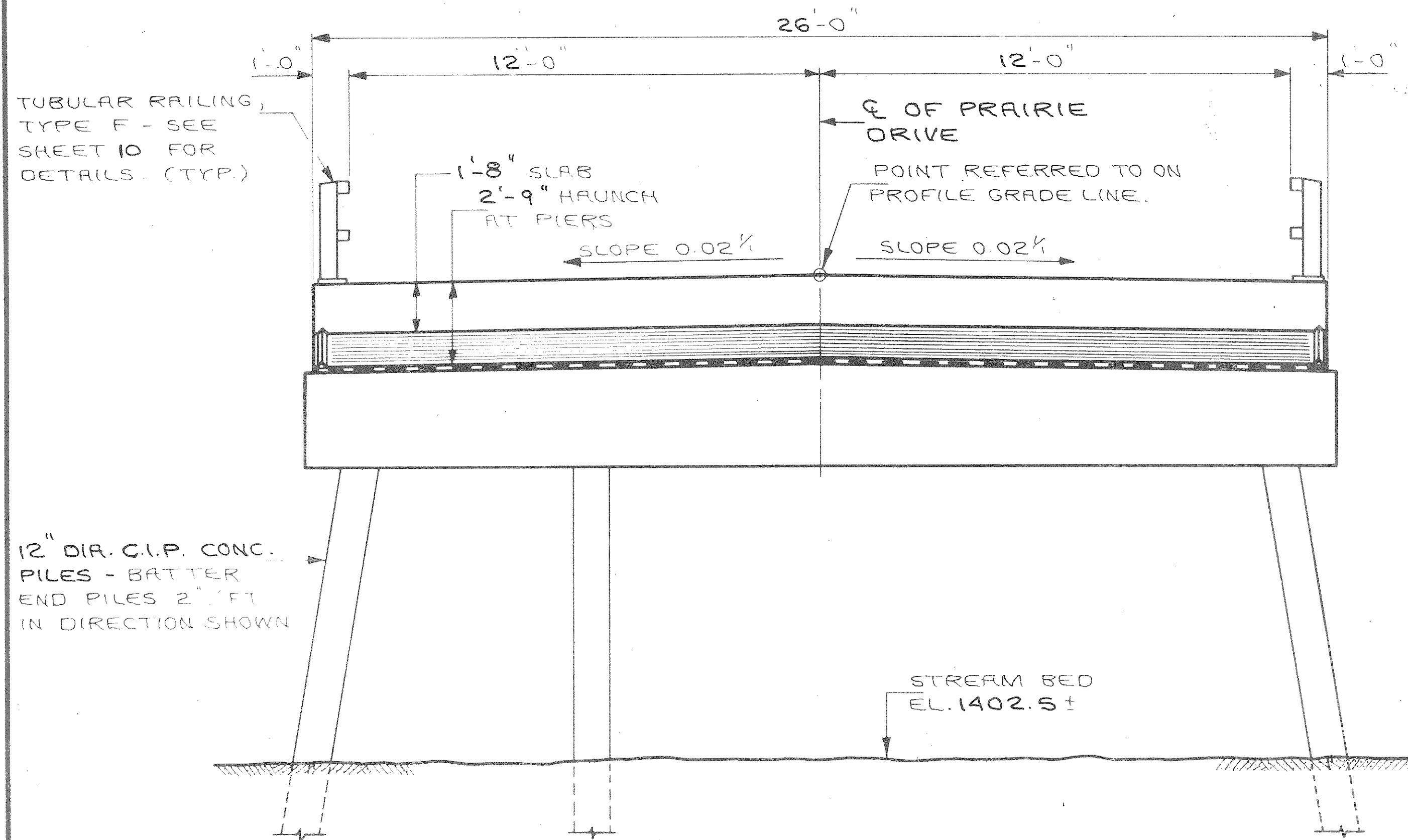


TOTAL ESTIMATED QUANTITIES

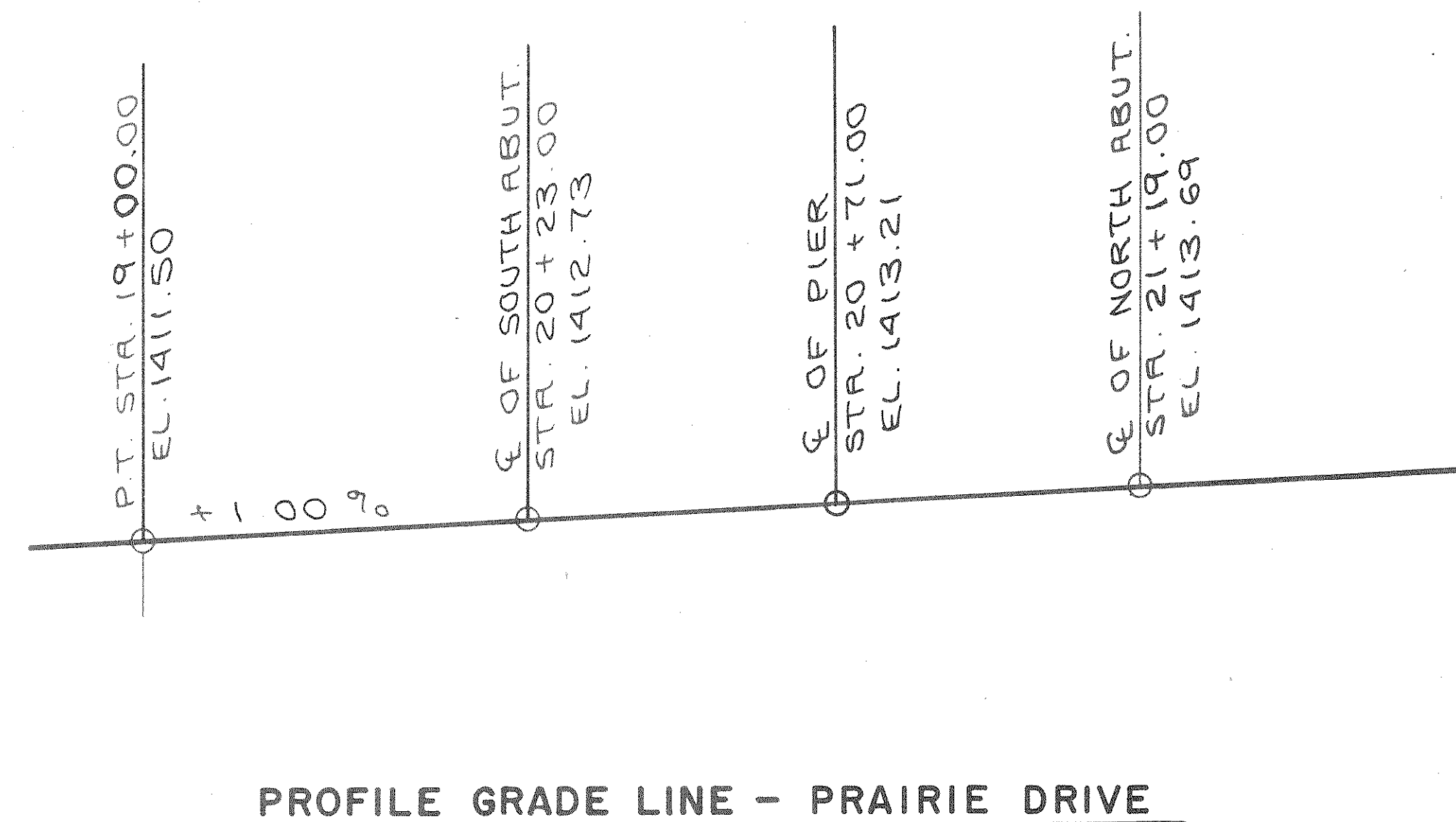
BIO ITEMS	UNIT	SOUTH ABUT	PIER	NORTH ABUT.	SUPER	TOTAL
REMOVING OLD BRIDGE, STATION 21 + 00	L.S.					1
EXCAVATION FOR STRUCTURES, BRIDGES B-35-92	L.S.					1
CONCRETE MASONRY, BRIDGES	C.Y.	19.3	10.8	19.3	172.6	222
HIGH-STRENGTH BAR STEEL REINFORCEMENT, BRIDGES	LBS.	1430	2320	1430	18,490	23,670
CAST-IN-PLACE CONCRETE PILING, DELIVERED AND DRIVEN, 10 3/4 - INCH	L.F.	250		200		450
TUBULAR RAILING, TYPE F, STRUCTURE B-35-92	L.S.					1
HEAVY RIPRAP	C.Y.	120		55		175
CAST-IN-PLACE CONCRETE PILING, DELIVERED AND DRIVEN, 12 - INCH	L.F.		330			330
CORTED HIGH-STRENGTH BAR STEEL REINFORCEMENT	LBS.				11,650	11,650
PROTECTIVE SURFACE TREATMENT	GAL.				12	12
GEOTEXTILE FABRIC, TYPE HR	S.Y.	175		80		255
STRUCTURE CARBON STEEL	LBS.				300	300
NON-BIO ITEMS						
FILLER	SIZE					1/2" & 3/4"
POLYVINYL CHLORIDE WATERSTOP	L.F.	36		36		72



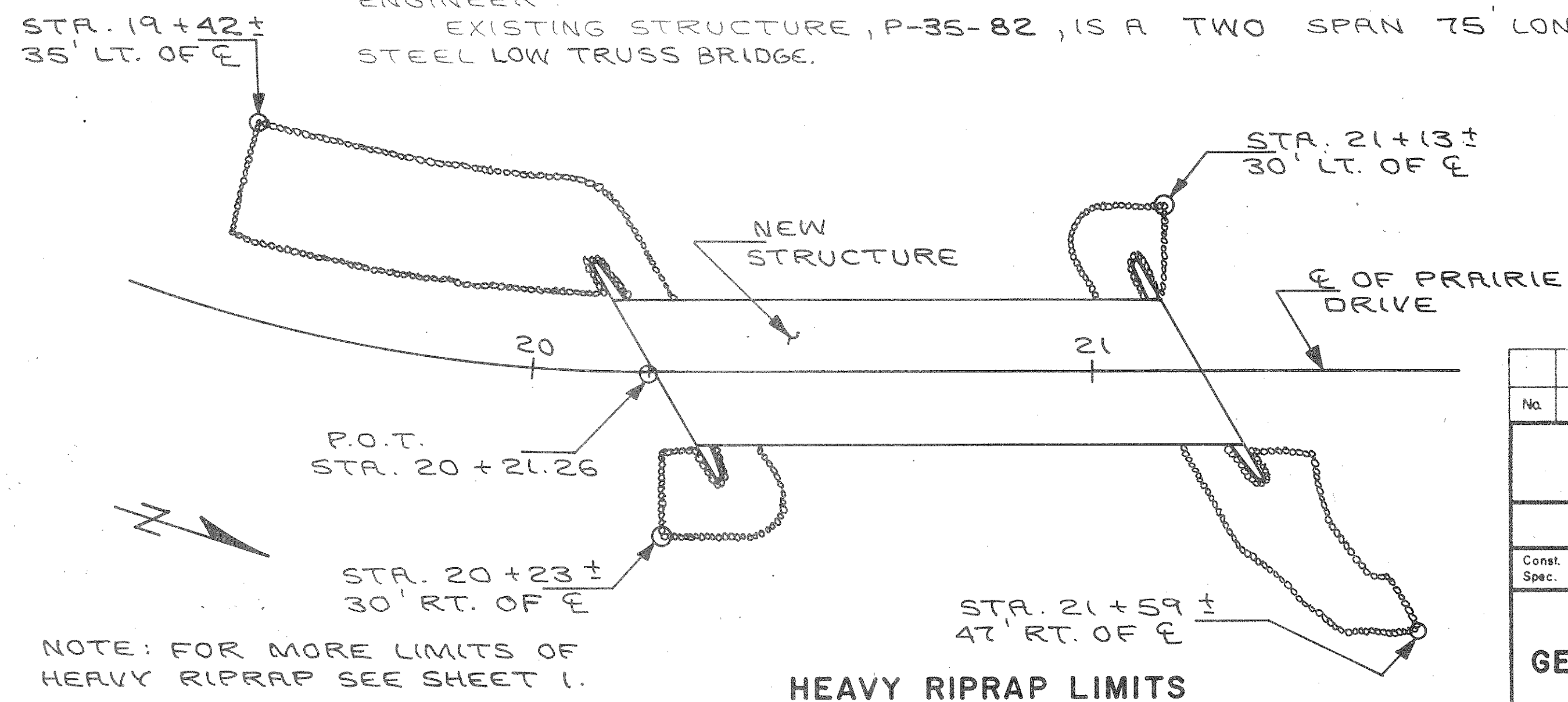
CROSS SECTION THRU BRIDGE
(LOOKING NORTH)

GENERAL NOTES

DRAWINGS SHALL NOT BE SCALED.
 BAR STEEL REINFORCEMENT SHALL BE EMBEDDED 2" CLEAR UNLESS SHOWN OR NOTED OTHERWISE.
 FILLER SHALL CONFORM TO A.A.S.H.T.O. DESIGNATION M153, TYPE I, II OR III OR M213.
 THE FIRST DIGIT OF A THREE DIGIT MARK OR THE FIRST TWO DIGITS OF A FOUR DIGIT MARK SIGNIFIES THE BAR SIZE.
 THE SLOPE OF THE FILL IN FRONT OF THE ABUTMENTS SHALL BE COVERED WITH HEAVY RIPRAP OVER GEOTEXTILE FABRIC TO THE LIMITS SHOWN BELOW, ON SHEET 1, ON THE ABUTMENT SHEETS OR AS DIRECTED BY THE ENGINEER.
 SLAB FALSEWORK SHALL BE SUPPORTED ON PILES. ALTERNATE SUPPORT MAY BE PROVIDED SUBJECT TO THE APPROVAL OF THE ENGINEER.
 EXISTING STRUCTURE, P-35-82, IS A TWO SPAN 75' LONG STEEL LOW TRUSS BRIDGE.



PROFILE GRADE LINE - PRAIRIE DRIVE



NOTE: FOR MORE LIMITS OF HEAVY RIPRAP SEE SHEET 1.

HEAVY RIPRAP LIMITS

No.	Date	Revision	By
STATE OF WISCONSIN DEPARTMENT OF TRANSPORTATION			
STRUCTURE B-35-92			
Const. Spec. WIS. 1981	Drawn By LEM	Plans Checked JRL	
GENERAL PLAN			SHEET 2 OF 10
			X78806