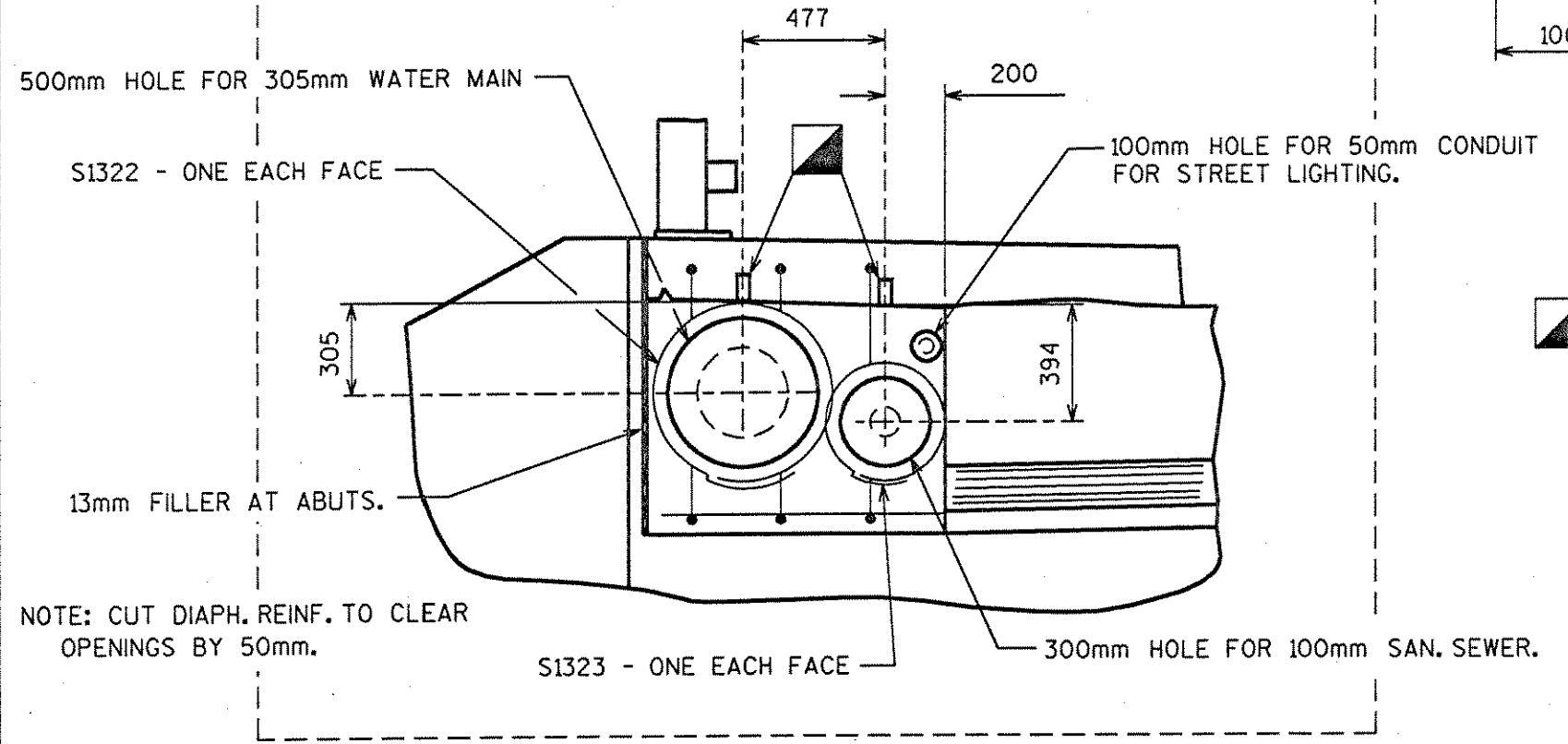
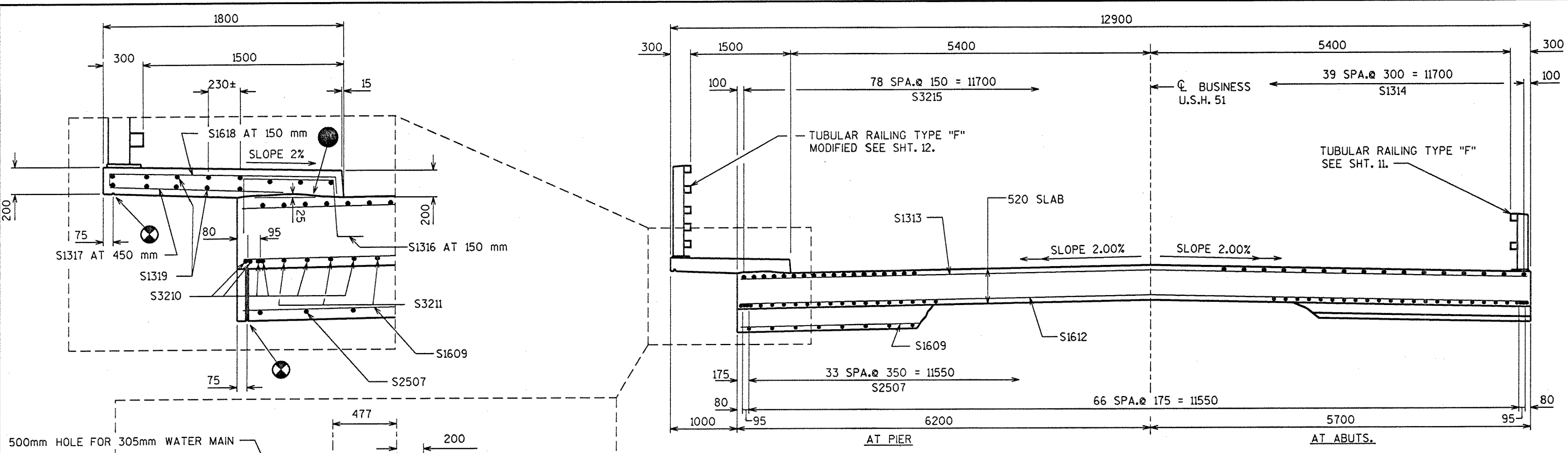
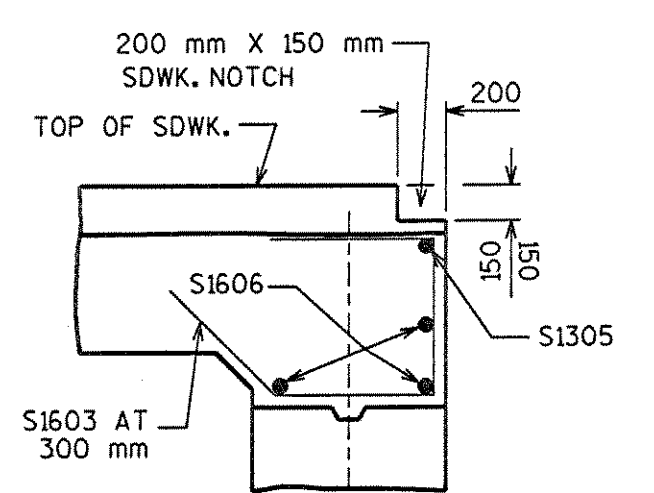


STATE PROJECT NUMBER	SHEET NO.
9675-05-70	8.

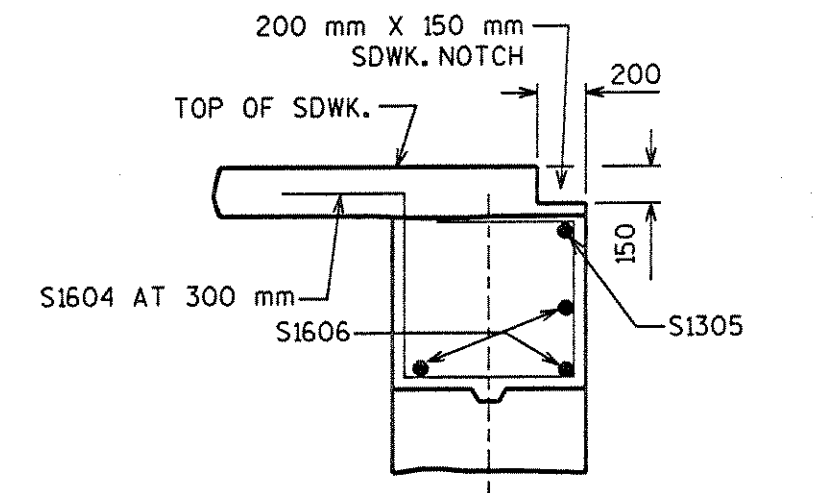


CONC. INSERTS - TO BE PROVIDED BY THE UTILITY AND PLACED BY THE CONTRACTOR. COST OF PLACING INSERTS TO BE INCLUDED IN BID ITEM "CONCRETE MASONRY". SPACING OF INSERTS TO BE PROVIDED BY THE UTILITY.

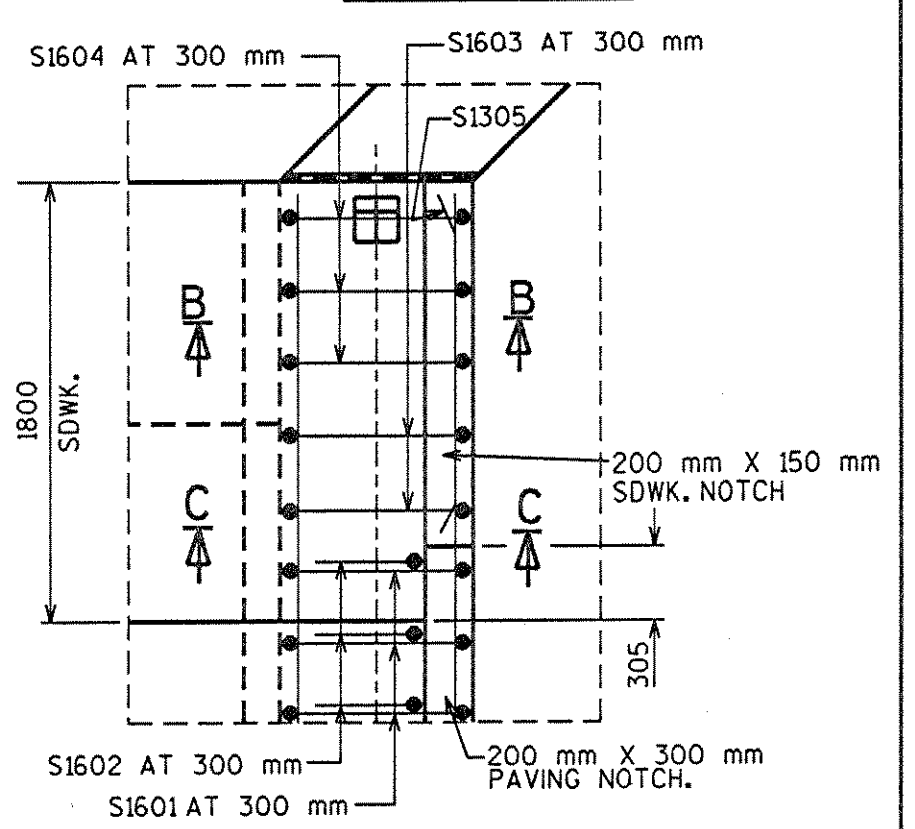
● CONST. JT. - STRIKE OFF AS SHOWN AND LEAVE ROUGH.
 ⊗ 20 mm CONTINUOUS DRIP GROOVE. END 600 mm FROM FACE OF ABUTS.
 NOTE:
 TOP TRANS. BARS IN SLAB SHALL BE SUPPORTED BY INDIVIDUAL BAR CHAIRS AT APPROX. 900 mm CENTERS EACH WAY. BOTTOM LONGIT. BARS SHALL BE SUPPORTED BY CONTINUOUS BAR CHAIRS AT APPROX. 1200 mm CENTERS.
 THE SLAB THICKNESS SHOWN IS MINIMUM. ANY TOLERANCES NECESSARY TO CORRECT CONSTRUCTION DISCREPANCIES ARE TO BE PLUS (+).



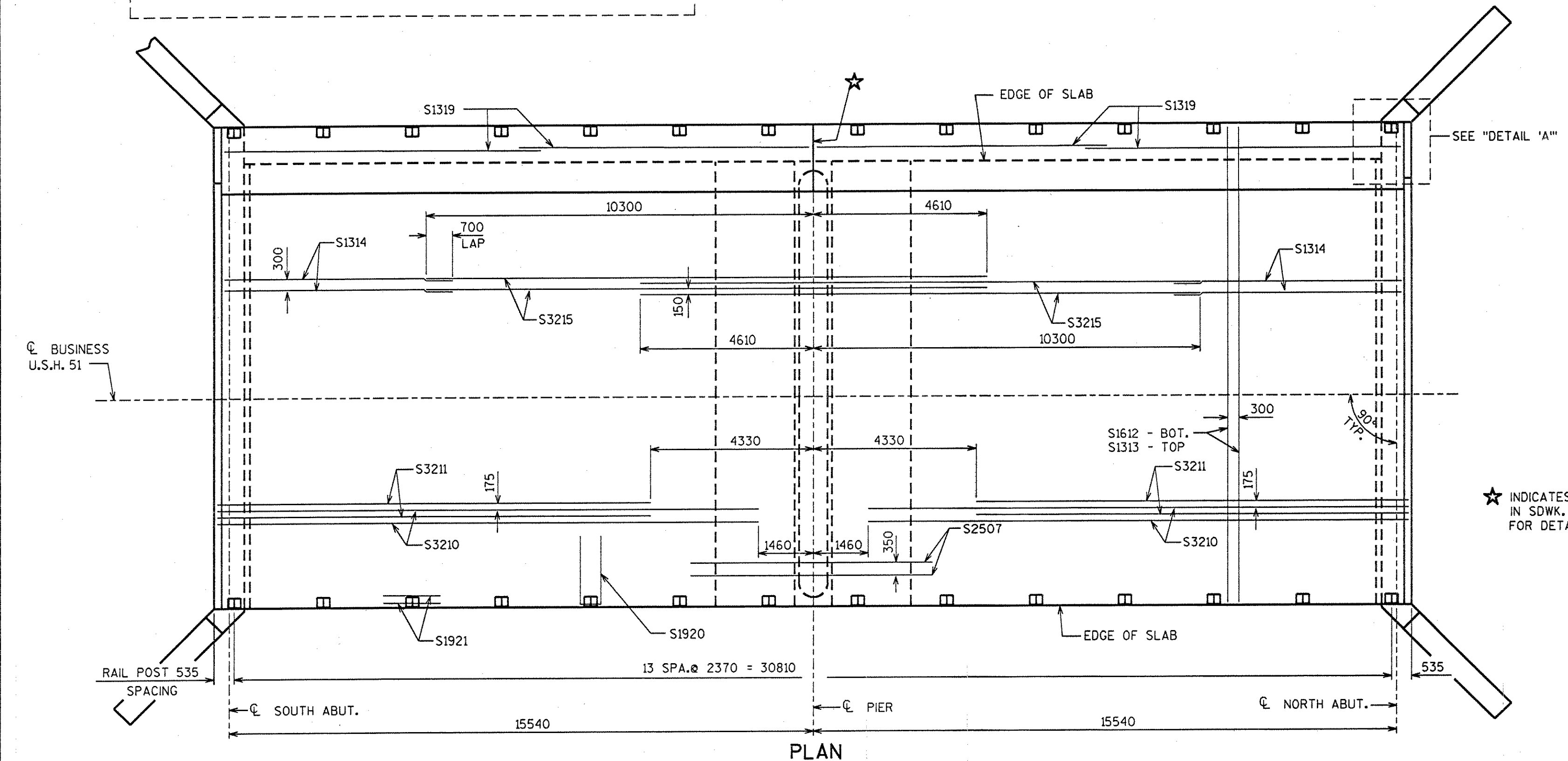
SECTION C-C



SECTION B-B



DETAIL 'A'



★ INDICATES DEFLECTION JOINT IN SDWK. FOR DETAILS SEE SHT. 12.

NO.	DATE	REVISION	BY
STATE OF WISCONSIN DEPARTMENT OF TRANSPORTATION DIVISION OF HIGHWAYS			
STRUCTURE B-35-103			
CONST. SPEC.	1996	DRAWN BY B.W.	PLANS CKD.
SUPERSTRUCTURE			SHEET 9

FILE= BR B35103:103SUP.DGN