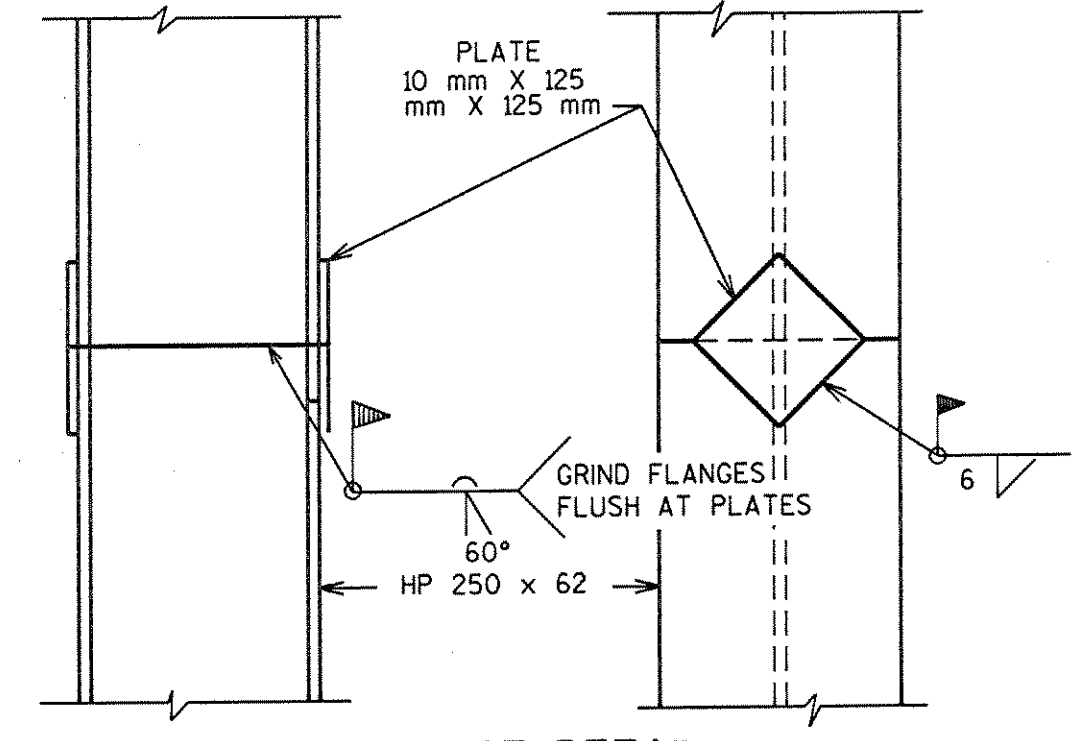


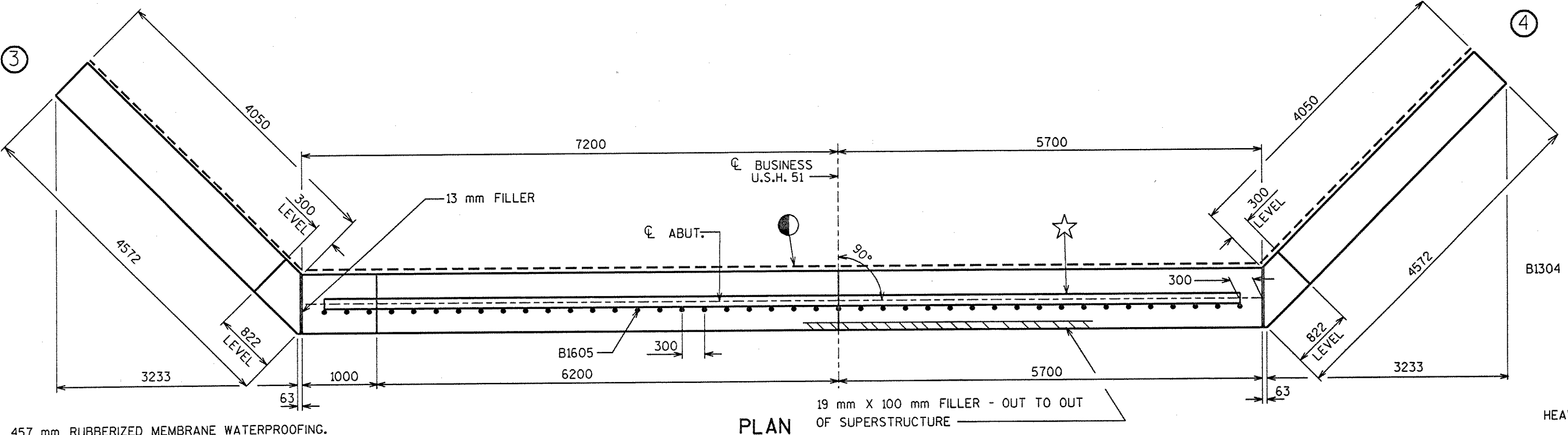
NOTE: SEAL ALL EXPOSED SURFACES OF 13 mm FILLER WITH NON-STAINING GRAY NON-BITUMINOUS JOINT SEALER. (25 mm DEEP AND 3 mm BELOW SURFACE OF CONC.)

**ELEVATION**  
(LOOKING NORTH)

NOTE: DO NOT PLACE FILL ABOVE 900 MM FROM BOTTOM OF ABUTMENT UNTIL SUPER. IS IN PLACE.



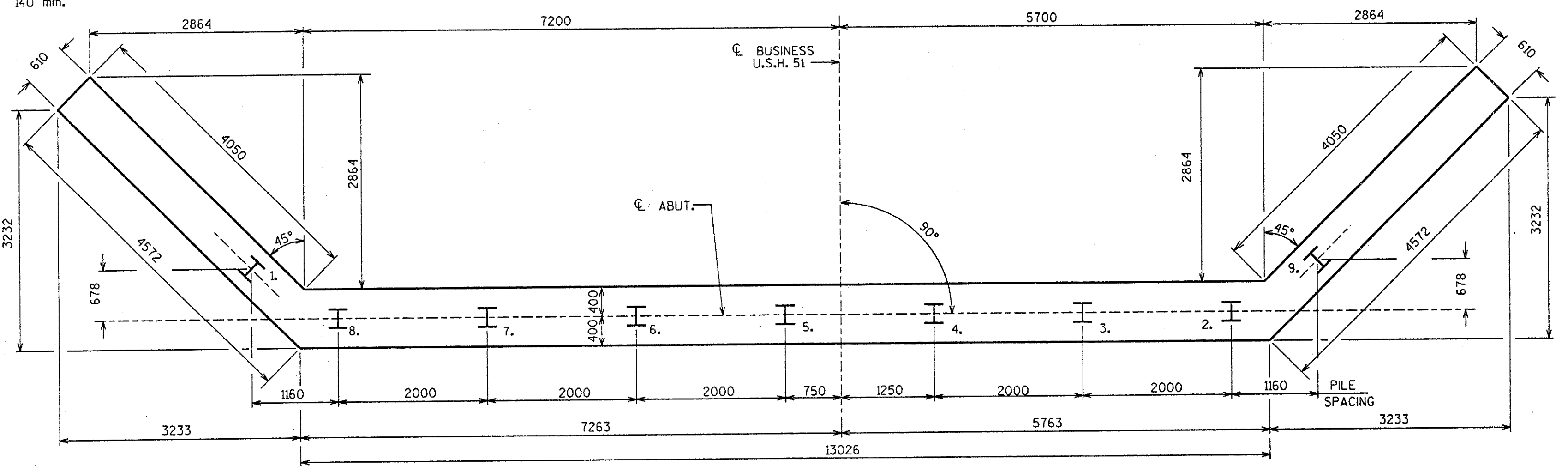
**PILE SPLICE DETAIL**



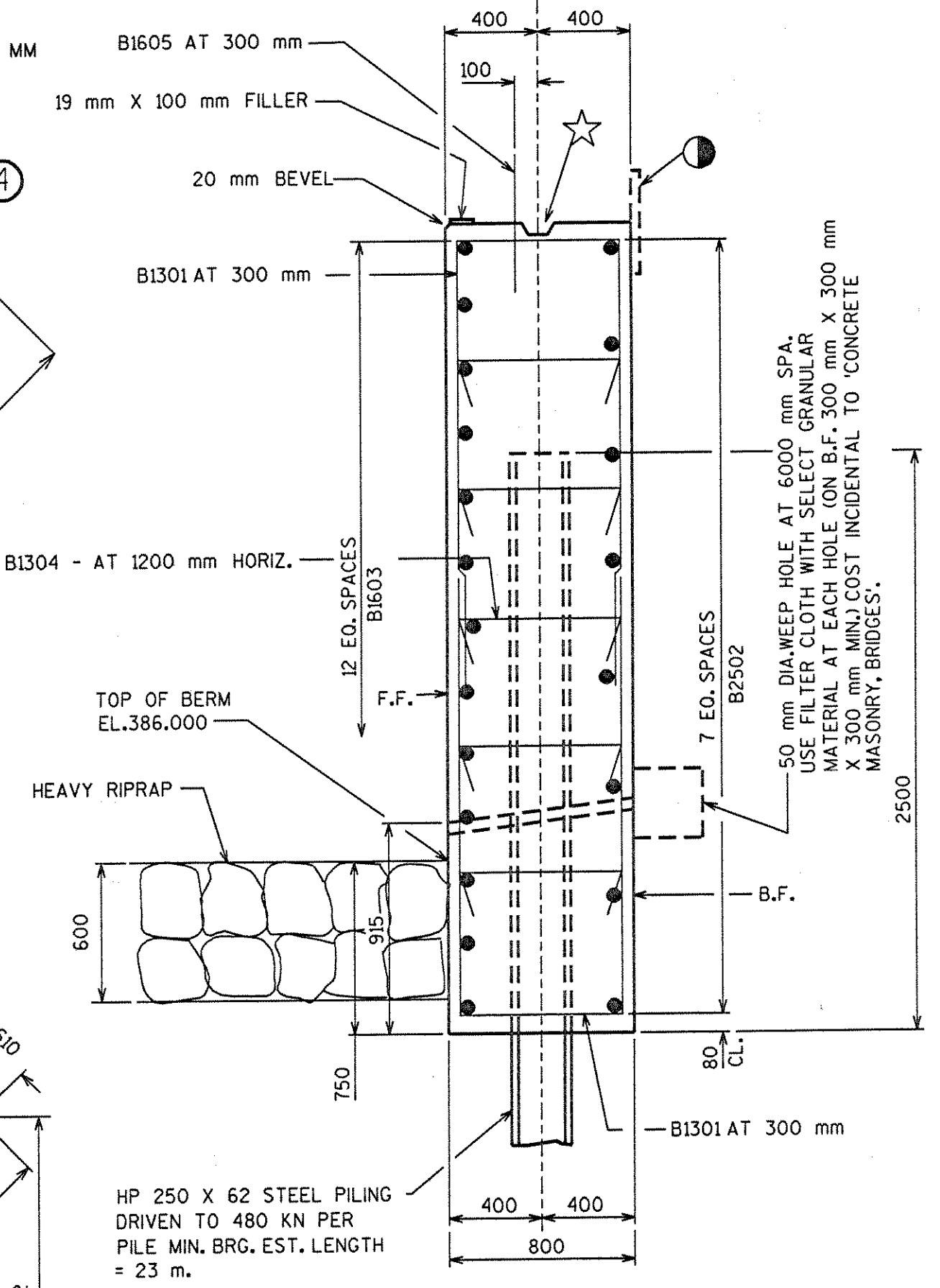
**PLAN**

NOTE: B13 BARS MAY BE PLACED AFTER CONCRETE HAS BEEN POURED, BUT BEFORE INITIAL SET HAS TAKEN PLACE.

457 mm RUBBERIZED MEMBRANE WATERPROOFING.  
KEYED CONST. JT. - FORMED BY SURF., BEVELED 38 mm X 140 mm.



**FOOTING AND PILING PLAN**



**SECTION THRU ABUT.**

| NO.  | DATE | REVISION | BY              |
|--|------|----------|-----------------|
| STATE OF WISCONSIN<br>DEPARTMENT OF TRANSPORTATION<br>DIVISION OF HIGHWAYS |      |          |                 |
| <b>STRUCTURE B-35-103</b>  |      |          |                 |
| CONST. SPEC.   | 1996 | DRAWN BY | B.W. PLANS CKD. |
| <b>NORTH ABUTMENT</b>  |      |          | SHEET 7         |

FILE= BR B35103103NA.DGN