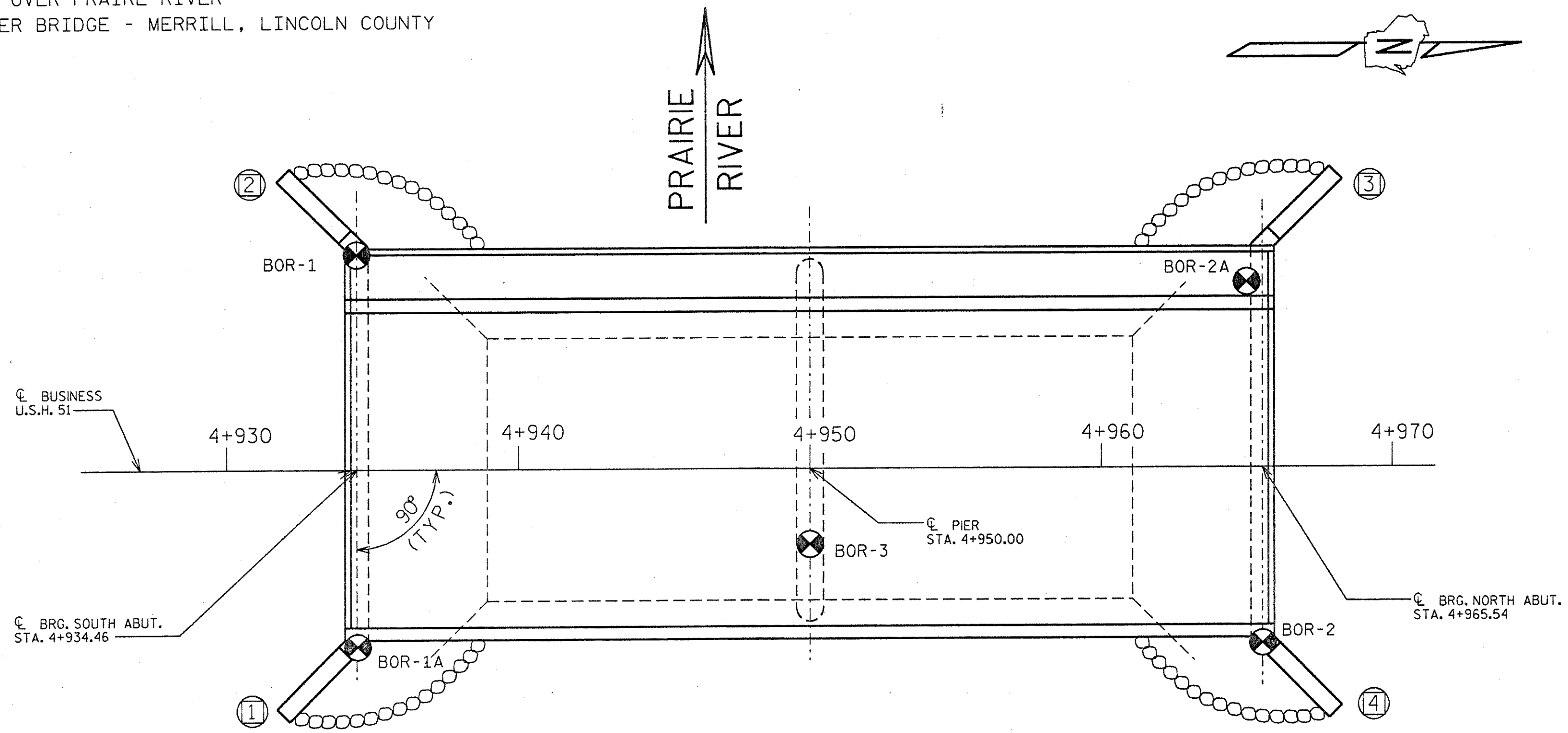


USH BUS 51 OVER PRAIRE RIVER
PRAIRE RIVER BRIDGE - MERRILL, LINCOLN COUNTY



STATE PROJECT NUMBER	SHEET NO.
9675-05-70	8.

ABBREVIATIONS
 F—Fine M—Medium C—Coarse
 Ws—Weathered So—Sound

MATERIAL SYMBOLS		
Topsoil	Silt	Sandstone
Sand	Peat	Limestone
Gravel	Clay	Igneous Rock

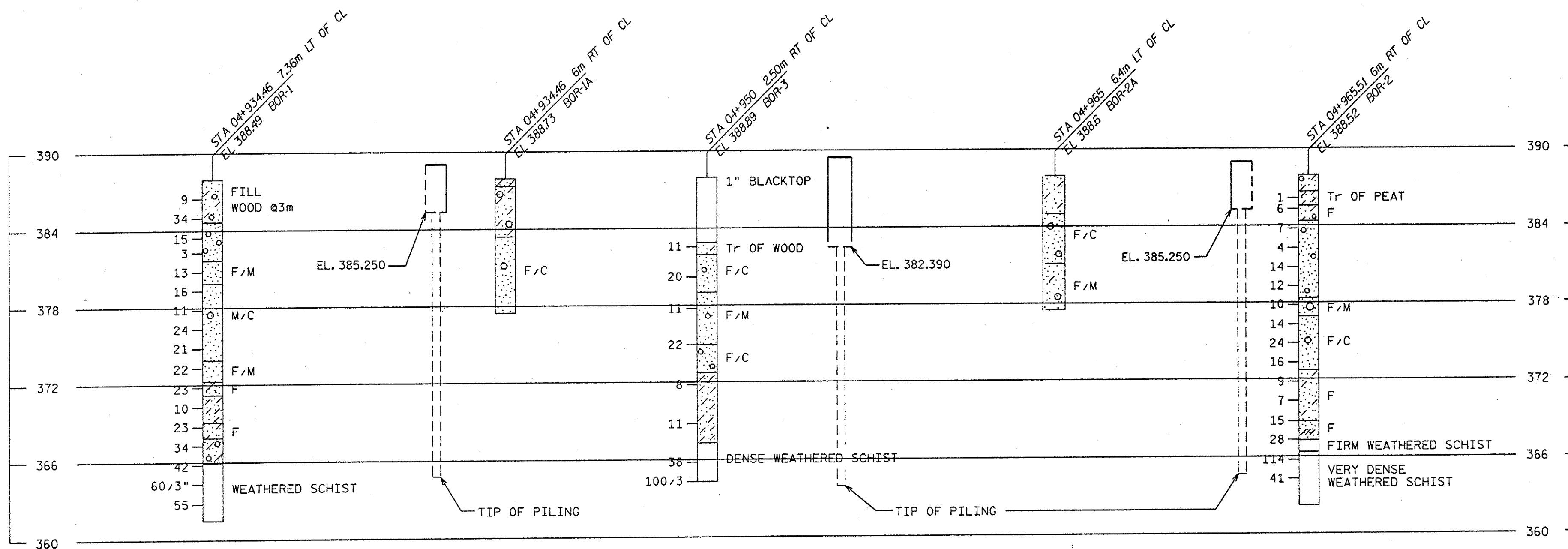
LEGEND OF PROBING
 Probing No.
 Sta.
 Elev.
 95/152=95 Blows for 152mm Penetration
 Probing taken with a 159.1Kg Wt. Falling 457mm on a 51mm O.D. Point.
 7 Average Blows Per 305mm
 Refusal 95/152

LEGEND OF BORING
 Elev. Boring No. Sta.
 Unconfined Strength kPa → 770 7 *
 Blows Per 300mm Using 63 Kg Wt. Falling 760mm
 Wash Sample
 Shelby Tube—S.T.
 Ground Water Elevation
 No Ground Water Observed Above This Elevation
 Sandy Gravel
 F Boulders or Cobbles
 Sand
 Silty Clay
 So
 Limestone

Unless otherwise specified, the blows per 300mm at the locations indicated are based on driving a 51mm O.D. x 35mm I.D. split spoon sampler with a 63Kg hammer having a free fall of 760mm. The blow count is taken in undisturbed soil immediately below a cased or open hole eliminating side friction on the drive pipe.

SUBSURFACE EXPLORATION FOR FOUNDATION DESIGN AND BIDDERS INFORMATION

To obtain relative data concerning the character of material in and upon which the foundation might be built, borings and/or soundings were made at points approximately as indicated on this drawing. The data presented herein represents the findings of the subsurface explorations made. However, because the depths investigated are limited and the area of the borings and/or soundings is very small in relation to the entire area, the Division of Highways does not warrant conditions below the depths investigated or that the classification of material encountered in these investigations is necessarily typical of the entire site.



NO.	DATE	REVISION	BY
STATE OF WISCONSIN DEPARTMENT OF TRANSPORTATION DIVISION OF HIGHWAYS			
STRUCTURE B-35-103			
CONST. SPEC.	1996	DRAWN BY MJP/B.W.	PLANS CK'D.
SUBSURFACE EXPLORATION			SHEET 3

FILE: 103501030