

DISTRICT CONTACT: JOE BENBENEK

TYPE CODE = X020

STATE PROJECT NUMBER	SHEET NO.
9675-05-70	8.

DESIGN DATA

LIVE LOAD:

DESIGN RATING; MS-18
 INVENTORY RATING; MS-20
 OPERATIONAL RATING; MS-33
 MAXIMUM STANDARD PERMIT VEHICLE LOAD = 1110 KN.
 STRUCTURE IS DESIGNED FOR A FUTURE WEARING SURFACE OF 1.0 KN/m².

ULTIMATE DESIGN STRESSES:

CONCRETE MASONRY SLAB — f'c = 28 MPa ALL OTHER — f'c = 24 MPa
 BAR STEEL REINFORCEMENT, AASHTO M31, GRADE 420 — fy = 420 MPa

FOUNDATION DATA

ABUTMENTS TO BE SUPPORTED ON HP 250 x 62 STEEL PILING DRIVEN TO A MINIMUM BEARING VALUE OF 480 KN PER PILE. ESTIMATED 23.0m LONG.

PIER TO BE SUPPORTED ON HP 250 x 62 STEEL PILING DRIVEN TO A MINIMUM BEARING VALUE OF 480 KN PER PILE. ESTIMATED 24.0m LONG.

HYDRAULIC DATA

100 YEAR FREQUENCY

Q₁₀₀ = 155.2 m³/s
 VEL. = 1.89 m/s
 HW. = EL. 387.96
 WATERWAY AREA = 82.1 m²
 DRAINAGE AREA = 579.7 km²
 ROAD OVERTOPPING = NA
 SCOUR CRITICAL CODE = 8

TRAFFIC VOLUME

BUSINESS U.S.H. 51

A.D.T. = 9,650 (2080)
 R.D.S. = 60 km/h

BENCH MARK

NO.	STATION	DESCRIPTION	ELEV.
	4+936.07	KEEL MARK ON WINGWALL ON SE. CORNER OF BRIDGE, B-35-14	5.312m RT. 389.020

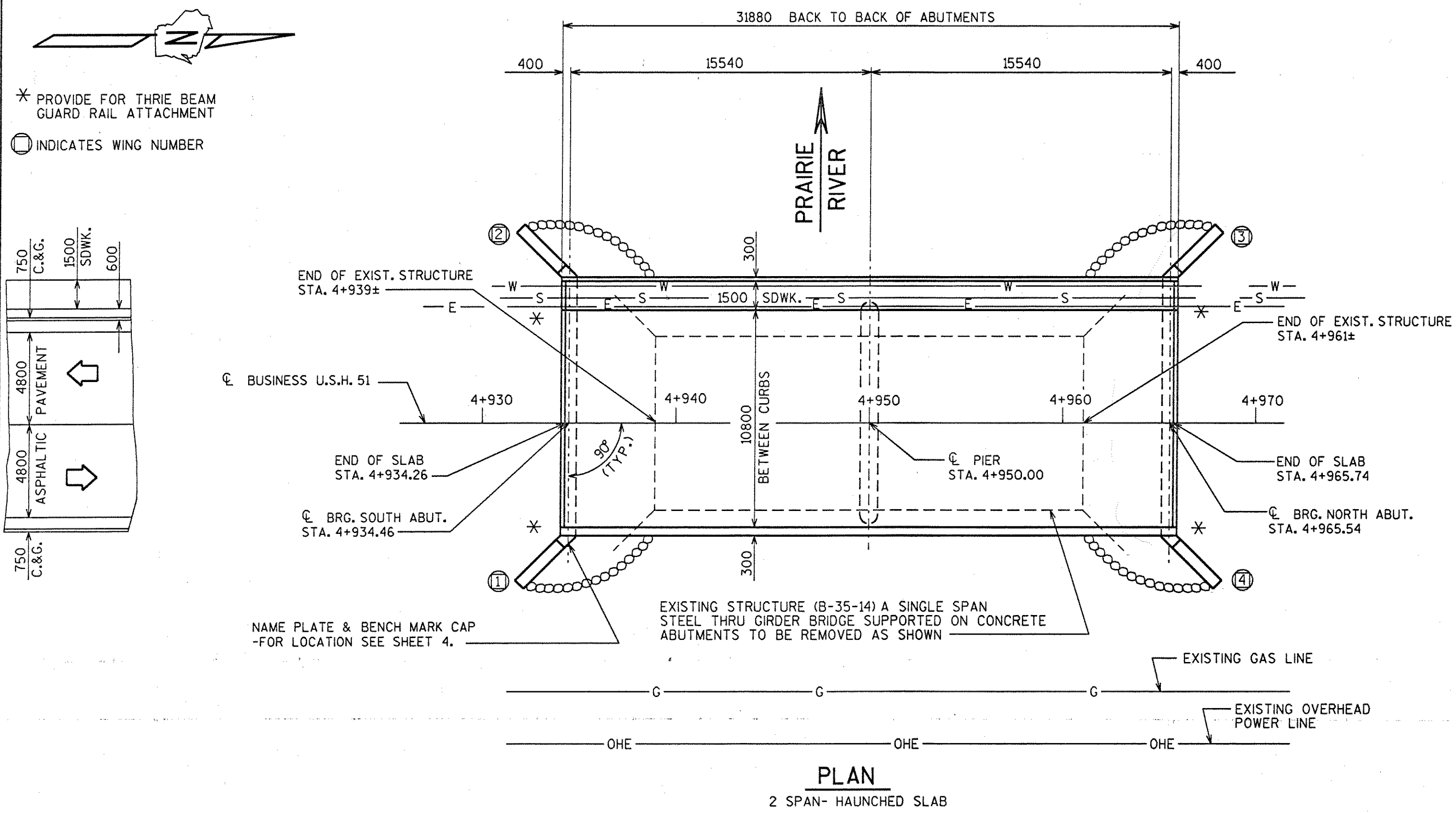
LIST OF DRAWINGS

- GENERAL PLAN
- CROSS SECTION & QUANTITIES
- SUBSURFACE EXPLORATION
- SOUTH ABUTMENT
- SOUTH ABUT. DETAILS
- PIER
- NORTH ABUTMENT
- NORTH ABUT. DETAILS
- SUPERSTRUCTURE
- SUPERSTRUCTURE DETAILS
- TUBULAR RAILING TYPE "F"
- TUBULAR STEEL RAILING TYPE "F" MODIFIED (5)

BRIDGE OFFICE CONTACT :
 KENT BAHLER (608) 266-8490
 CHRIS FOLTMAN (608) 266-5094

NO.	DATE	REVISION	BY
STATE OF WISCONSIN DEPARTMENT OF TRANSPORTATION DIVISION OF HIGHWAYS			
STRUCTURE B-35-103			
BUSINESS U.S.H. 51 OVER PRAIRIE RIVER			
COUNTY	LINCOLN	TOWN/CITY/VILLAGE	MERRILL
DESIGN SPEC.	AASHTO 1996	LOAD	MS-18
DESIGNED BY	V.T. CK'D.	DRAWN BY	B.W. CK'D.
APPROVED	CHIEF BRIDGE DESIGN ENGINEER	DATE	
GENERAL PLAN		SHEET 1 OF 12	DATE: MAR. '97

I.D. 9675-05-00

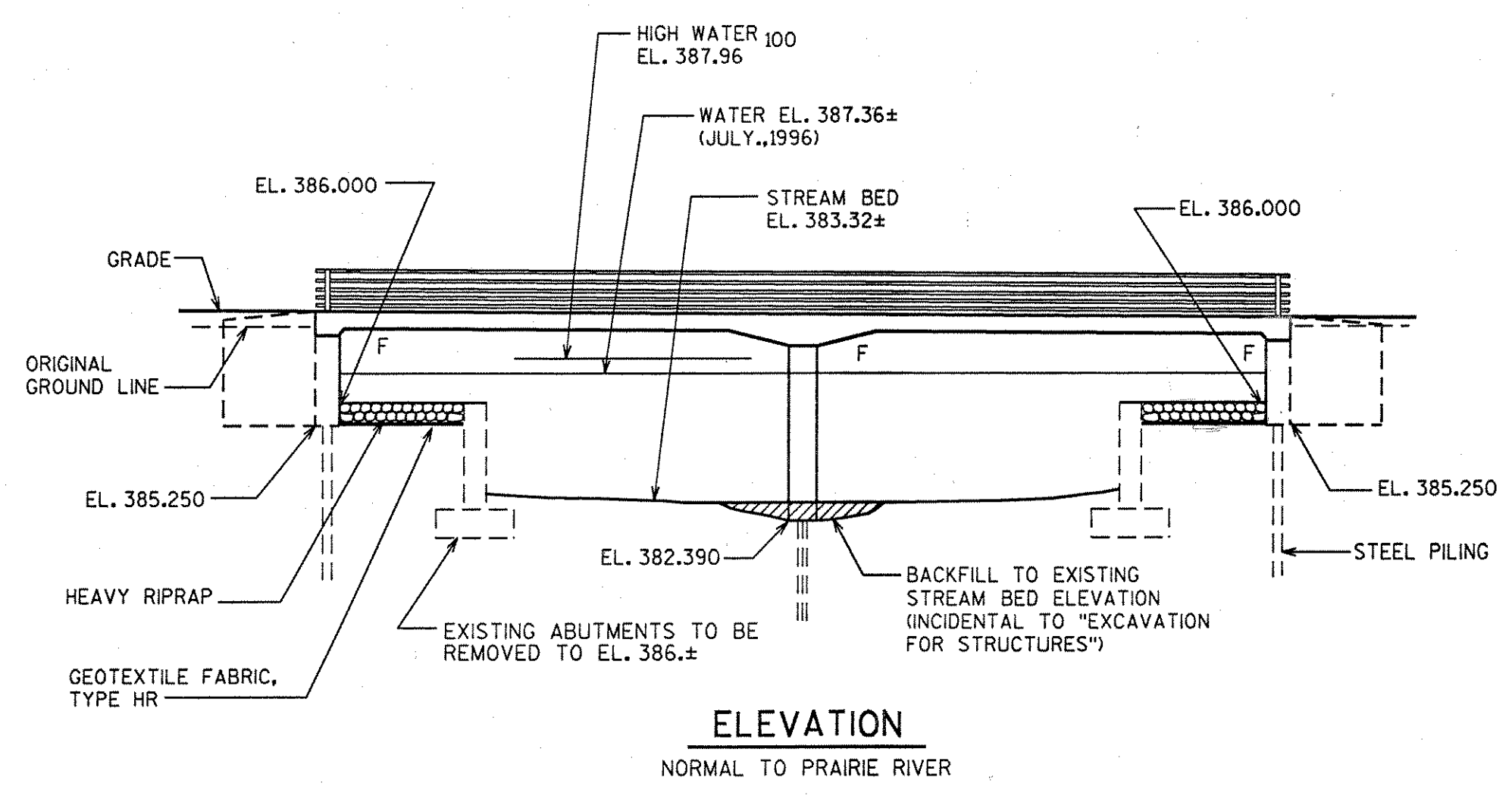


EXISTING STRUCTURE (B-35-14) A SINGLE SPAN STEEL THRU GIRDER BRIDGE SUPPORTED ON CONCRETE ABUTMENTS TO BE REMOVED AS SHOWN

EXISTING GAS LINE

EXISTING OVERHEAD POWER LINE

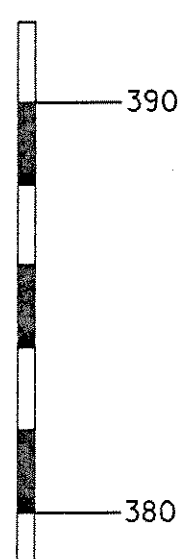
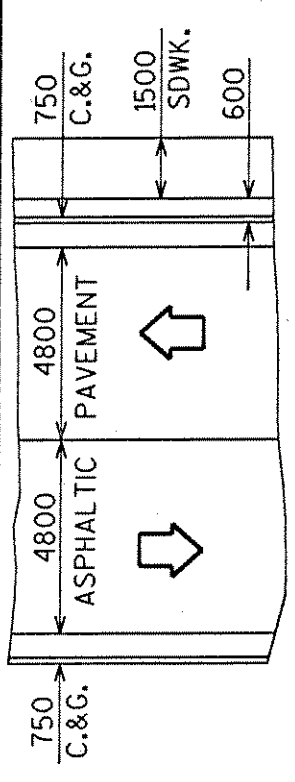
PLAN
2 SPAN- HAUNCHED SLAB



ELEVATION
NORMAL TO PRAIRIE RIVER

* PROVIDE FOR THRE BEAM GUARD RAIL ATTACHMENT

○ INDICATES WING NUMBER



FILE=BR.B35103103GP.DGN