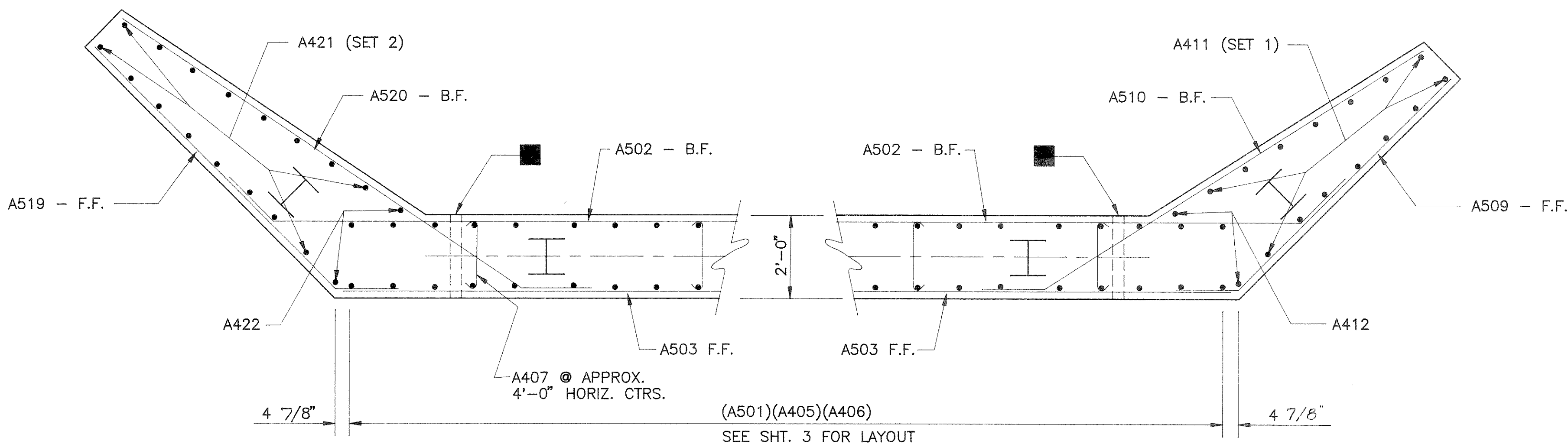


ELEVATION

WINGS 2 & 4

WINGS 1 & 3



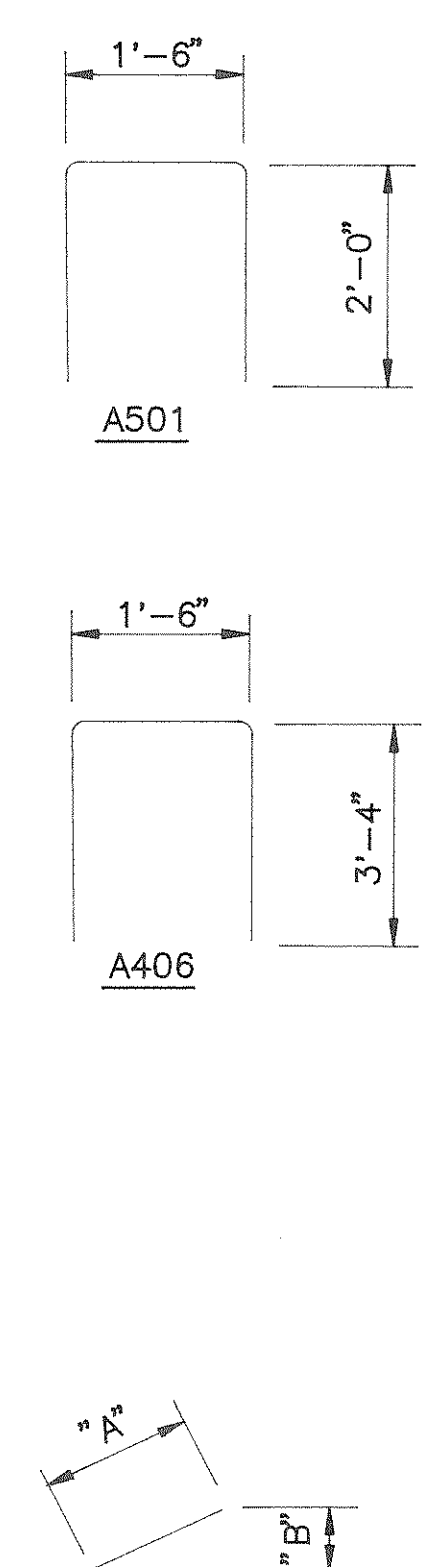
PLAN SECTION
SHOWING BAR STEEL BELOW SEAT

2" DIA. WEEP HOLE @ LOCATIONS SHOWN. USE FILTER CLOTH W/SELECT GRANULAR MATERIAL @ EA. HOLE (ON B.F. 12"x12"x12" MIN.) COST TO BE INCIDENTAL TO "CONCRETE MASONRY BRIDGES."

BILL OF BARS 4,180 # (2 ABUTS.)

| MARK | NO. | LENGTH | BENT | CUT | LOCATION |
|------|-----|--------|------|-----|-----------------------------------|
| A501 | 62 | 5'-3" | X | | BODY - VERT. - STIRRUP @ BTM. |
| A502 | 32 | 20'-4" | X | | BODY - HORIZ. - B.F. |
| A503 | 32 | 17'-4" | | | BODY - HORIZ. - F.F. |
| A604 | 8 | 17'-7" | | | BODY - HORIZ. - TOP |
| A405 | 124 | 7'-1" | | | BODY - VERT. B.F. & F.F. |
| A406 | 62 | 8'-0" | X | | BODY - VERT. - STIRRUPS @ TOP |
| A407 | 56 | 2'-5" | X | | BODY - HORIZ. TIES |
| A508 | 52 | 2'-0" | | | BODY - VERT. - DOWELS @ TOP |
| A509 | 14 | 8'-8" | X | | WINGS 1 & 3 - HORIZ. - F.F. |
| A510 | 14 | 12'-3" | X | | WINGS 1 & 3 - HORIZ. - B.F. |
| A411 | 14 | 15'-7" | | X | WINGS 1 & 3 - VERT. - F.F. & B.F. |
| A412 | 4 | 9'-5" | | | WINGS 1 & 3 - VERT. - F.F. & B.F. |
| A513 | 2 | 7'-2" | X | | WINGS 1 & 3 - HORIZ. - F.F. |
| A514 | 2 | 5'-1" | X | | WINGS 1 & 3 - HORIZ. - F.F. |
| A515 | 2 | 3'-1" | X | | WINGS 1 & 3 - HORIZ. - F.F. |
| A516 | 2 | 10'-9" | X | | WINGS 1 & 3 - HORIZ. - B.F. |
| A517 | 2 | 3'-10" | | | WINGS 1 & 3 - HORIZ. - B.F. |
| A518 | 4 | 7'-11" | X | | WINGS 1 & 3 - TOP - F.F. & B.F. |
| A519 | 16 | 9'-8" | X | | WINGS 2 & 4 - HORIZ. - F.F. |
| A520 | 16 | 13'-1" | X | | WINGS 2 & 4 - HORIZ. - B.F. |
| A421 | 16 | 16'-7" | | X | WINGS 2 & 4 - VERT. - F.F. & B.F. |
| A422 | 4 | 9'-5" | | | WINGS 2 & 4 - VERT. - F.F. & B.F. |
| A523 | 2 | 8'-8" | X | | WINGS 2 & 4 - HORIZ. - F.F. |
| A524 | 2 | 5'-4" | X | | WINGS 2 & 4 - HORIZ. - F.F. |
| A525 | 2 | 6'-0" | | | WINGS 2 & 4 - HORIZ. - B.F. |
| A526 | 4 | 8'-6" | X | | WINGS 2 & 4 - TOP - F.F. & B.F. |
| A427 | 6 | 3'-3" | | | ALL WINGS - VERT. CORNERS |

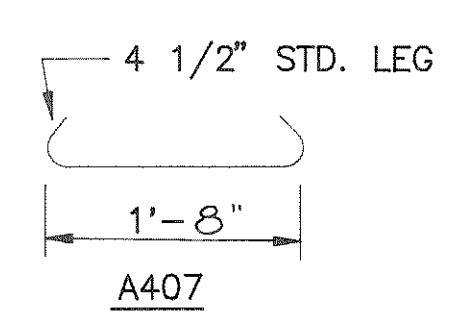
BAR DIMENSIONS ARE OUT TO OUT OF BAR. THE FIRST DIGIT OF A BAR MARK SIGNIFIES THE BAR SIZE.



CUTTING DIAGRAMS

CUT ALL BARS ALONG THIS LINE. MAKE ALL CUTS NORMAL TO BAR AXIS. BUNDLE AND MARK CUT BARS WITH BAR AND SET NUMBER.

| MARK | "A" | "B" |
|------|-------|--------|
| A502 | 1'-6" | 1'-1" |
| A509 | 1'-6" | 1'-1" |
| A510 | 1'-6" | 10" |
| A513 | 1'-6" | 1'-1" |
| A514 | 1'-4" | 11" |
| A515 | 1'-4" | 11" |
| A518 | 8" | 4" |
| A519 | 1'-6" | 1'-1" |
| A520 | 1'-6" | 11" |
| A523 | 2'-8" | 1'-10" |
| A524 | 2'-8" | 1'-10" |
| A526 | 8" | 4" |
| A516 | 1'-6" | 10" |



| | | | |
|--|----------|----------|--------------|
| No. | Date. | Revision | By |
| STATE OF WISCONSIN DEPARTMENT OF TRANSPORTATION DIVISION OF HIGHWAYS | | | |
| STRUCTURE B-35-106 | | | |
| Const. Spec. | WIS. '89 | Drawn By | T.R.L. |
| | | Checked | S.R.L. |
| WINGS | | | SHEET 4 OF 6 |
| | | | X 82700 |