

### GENERAL NOTES

DRAWINGS SHALL NOT BE SCALED.

BAR STEEL REINFORCEMENT SHALL BE EMBEDDED 2" CLEAR UNLESS OTHERWISE NOTED.

THE SLOPES IN FRONT OF THE ABUTMENTS SHALL BE COVERED WITH HEAVY RIPRAP TO THE EXTENT SHOWN ON THIS SHEET.

JOINT FILLER SHALL CONFORM TO A.A.S.H.T.O. DESIGNATION M153 TYPE I, II, OR III OR M213.

THIS STRUCTURE WILL REPLACE P-35-75 WHICH IS A STEEL TRUSS GIRDER BRIDGE 41' LG. x 21.3' WIDE.

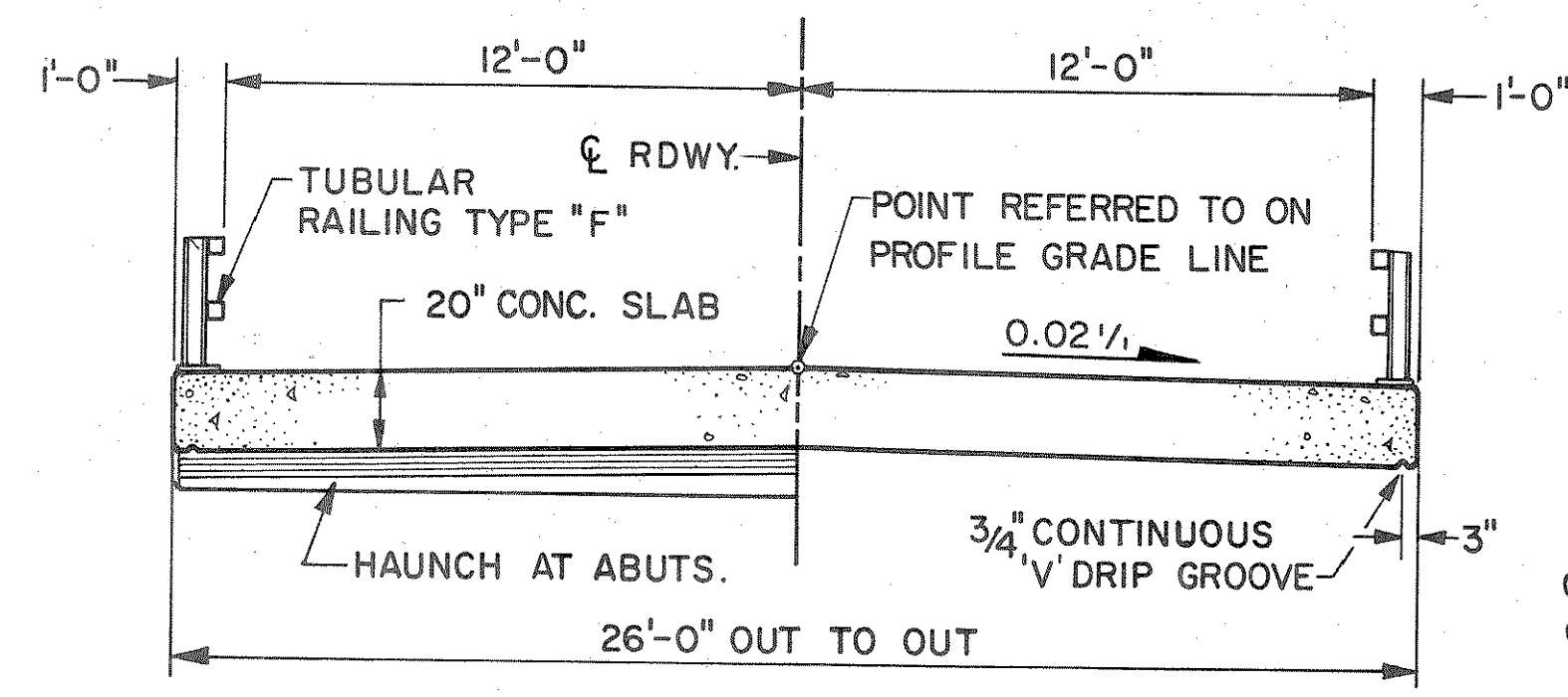
### DESIGN DATA

STRUCTURE IS DESIGNED FOR A FUTURE WEARING SURFACE OF 20 P.S.F.

**RATINGS:** DESIGN RATING \_\_\_\_\_ HS 20  
 INVENTORY RATING \_\_\_\_\_ HS 21  
 OPERATING RATING \_\_\_\_\_ HS 35  
 MAX. STD. PERMIT VEHICLE LOAD \_\_\_\_\_ 172 KIPS

**ALLOWABLE DESIGN STRESSES:**  
 CONCRETE MASONRY - SLAB \_\_\_\_\_  $f_c = 4,000$  P.S.I.  
 - OTHER \_\_\_\_\_  $f_c = 3,500$  P.S.I.  
 HIGH STRENGTH BAR STEEL REINFORCEMENT - GRADE 60 \_\_\_\_\_  $f_y = 60,000$  P.S.I.

**FOUNDATION DATA:** ABUTMENTS TO BE SUPPORTED ON HP10x42 STEEL "H" PILES EST. 40'-0" LG. & DRIVEN TO A MIN. BEARING VALUE OF 40 TONS / PILE.



CROSS SECTION THRU ROADWAY

### DESIGN DATA (CONT.)

**HYDRAULIC DATA:**

DRAINAGE AREA	63.3 SQ. MI.
HIGHWATER 100	EL. 1457.0
Q 100-1,900 C.F.S.	Q BRIDGE 1,758 C.F.S.
	Q OVERFLOW 142 C.F.S.
WATERWAY AREA	182 SQ. FT.
VELOCITY	8.8 F.P.S.

**ROADWAY OVERTOPPING**

Q	12
HW	EL. 1456.3

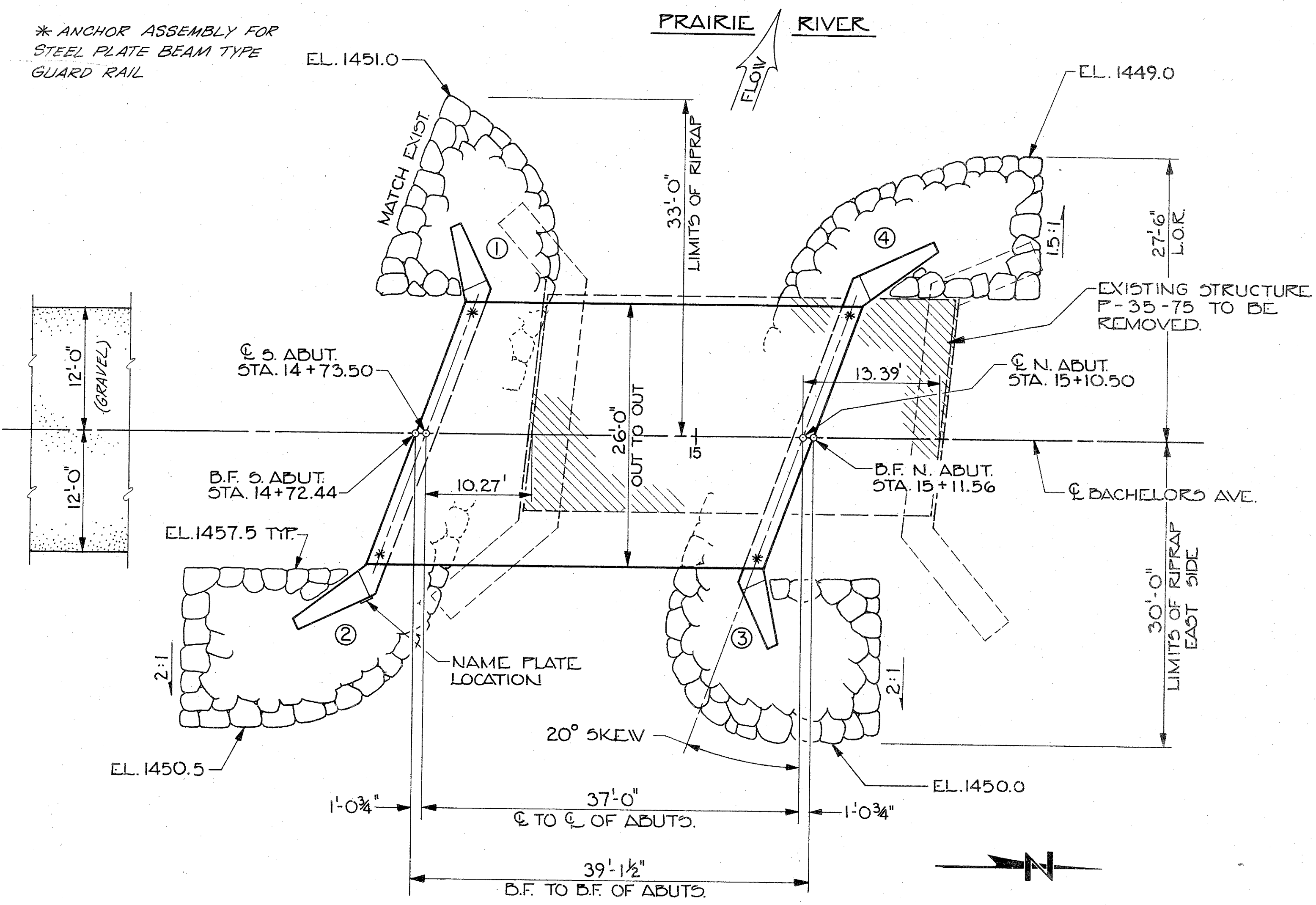
**TRAFFIC DATA**

A.D.T. (1989)	60
A.D.T. (2010)	73
R.D.S.	55 MPH.

### TOTAL ESTIMATED QUANTITIES

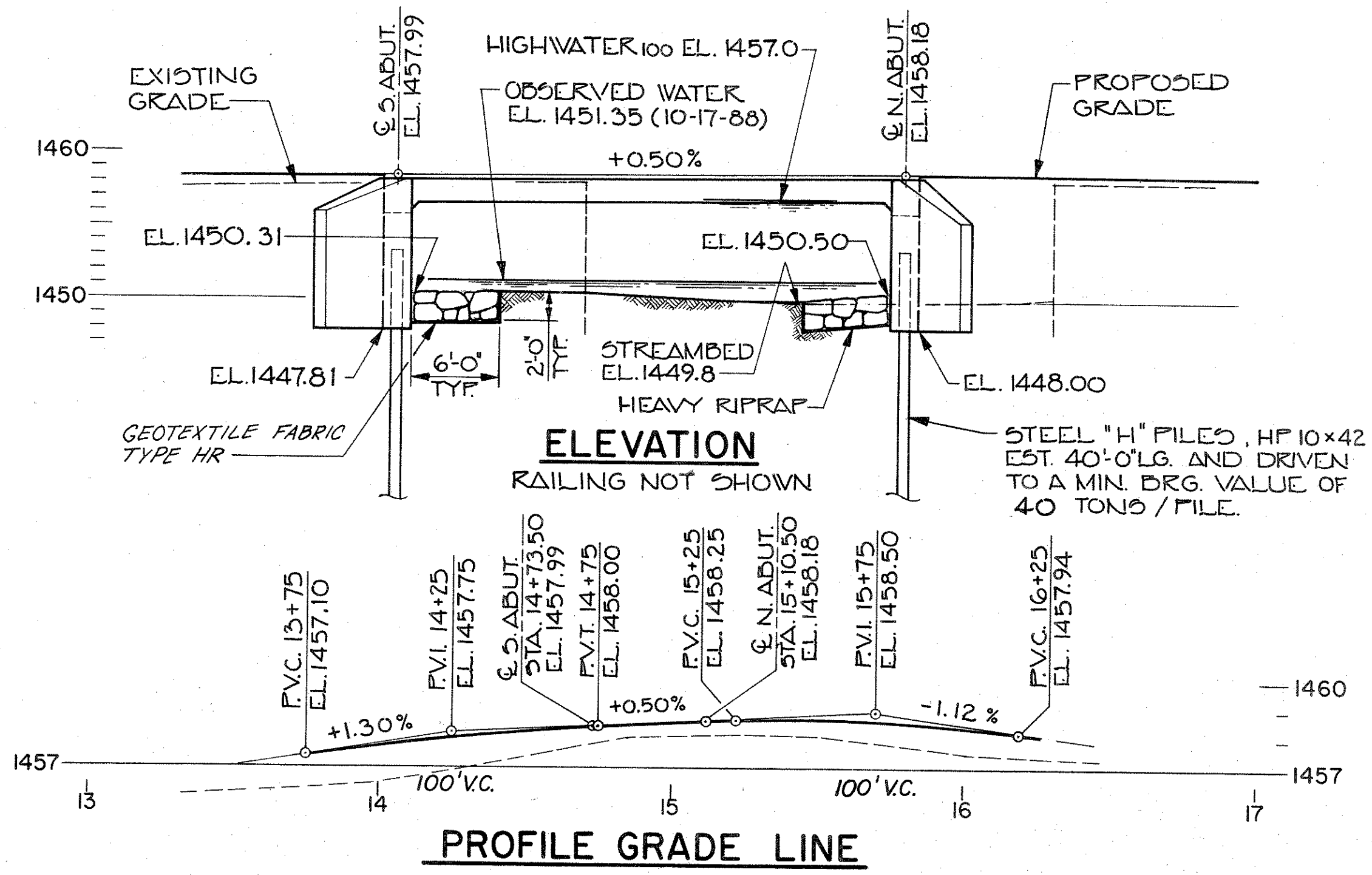
BID ITEMS	UNIT	S. ABUT.	N. ABUT.	SUPER	TOTAL
REMOVING OLD STRUCTURE STA. 15+04	L.S.				1
EXCAVATION FOR STRUCTURES, BRIDGES	L.S.				1
CONCRETE MASONRY, BRIDGES	C.Y.	28.3	28.3	66.4	123.0
HIGH STRENGTH BAR STEEL REINFORCEMENT, BRIDGES	LBS.	2,090	2,090	9,255	13,435
COATED HIGH STRENGTH BAR STEEL REINFORCEMENT, BRIDGES	LBS.			1,810	1,810
HEAVY RIPRAP	C.Y.	55	55		110
PROTECTIVE SURFACE TREATMENT	GAL.			5	5
GEOTEXTILE FABRIC, TYPE HR	S.Y.	85	85		170
STEEL PILING, DELIVERED AND DRIVEN, HP 10x42	L.F.	240	240		480
TUBULAR RAILING TYPE "F" B-35-106	L.S.				1
NON-BID ITEMS					
FILLER	SIZE	-	-	-	1/2" x 3/4"
POLYVINYL CHLORIDE WATERSTOP	L.F.	33	33		66

\* ANCHOR ASSEMBLY FOR STEEL PLATE BEAM TYPE GUARD RAIL



### PLAN

SINGLE SPAN CONCRETE SLAB



### ELEVATION

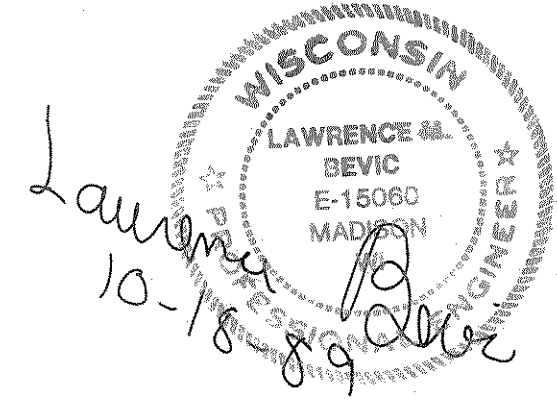
RAILING NOT SHOWN

### LIST OF DRAWINGS

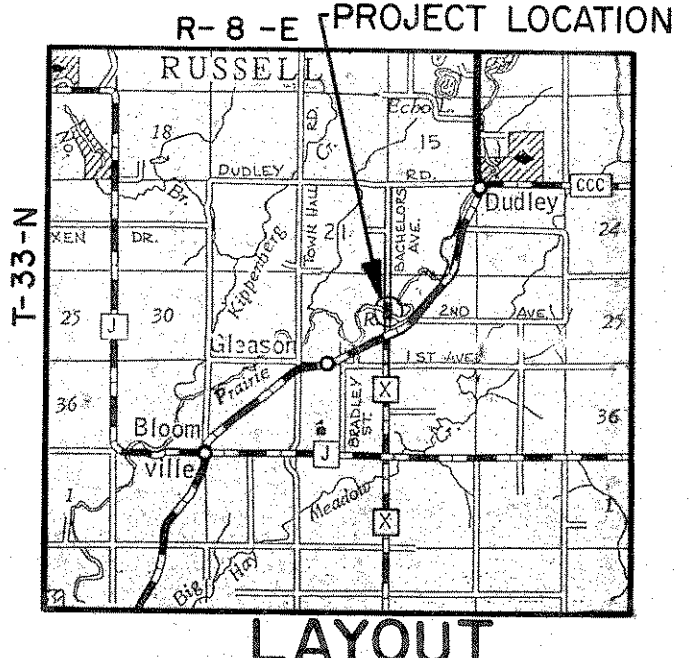
1. GENERAL PLAN
2. SUBSURFACE EXPLORATION
3. ABUTMENTS
4. WINGS
5. SUPERSTRUCTURE
6. TUBULAR RAILING TYPE "F"

### BENCH MARK LOCATION

NO.	STA.	LOCATION	ELEV.
1	12+09.5	R.R. SPIKE IN 8" STUMP	35.5' RT. 1454.88
2	14+88	CHISELED "D" ON S.W. ABUT.	14.5' LT. 1455.70



PLANS PREPARED BY:  
 BARRIENTOS & ASSOCIATES, INC.  
 CONSULTING ENGINEERS  
 3822 MINERAL PT. RD. - MADISON, WI. 53705  
 PH. 608-238-6761



LAYOUT

No.	Date	Revision	By
STATE OF WISCONSIN DEPARTMENT OF TRANSPORTATION DIVISION OF HIGHWAYS			
<b>STRUCTURE B-35-106</b>			
<b>BACHELORS AVE. OVER PRAIRIE R.</b>			
County LINCOLN	Town RUSSELL	Design Spec. A.A.S.H.T.O. '88	Load HS 20
Designed By L.M.D.	Checked J.T.T.	Drawn By D.R.L.	Plans Checked S.R.L.
Approved _____ State Bridge Engineer		Date _____	
<b>GENERAL PLAN</b>			SHEET 1 OF 6 X 82700