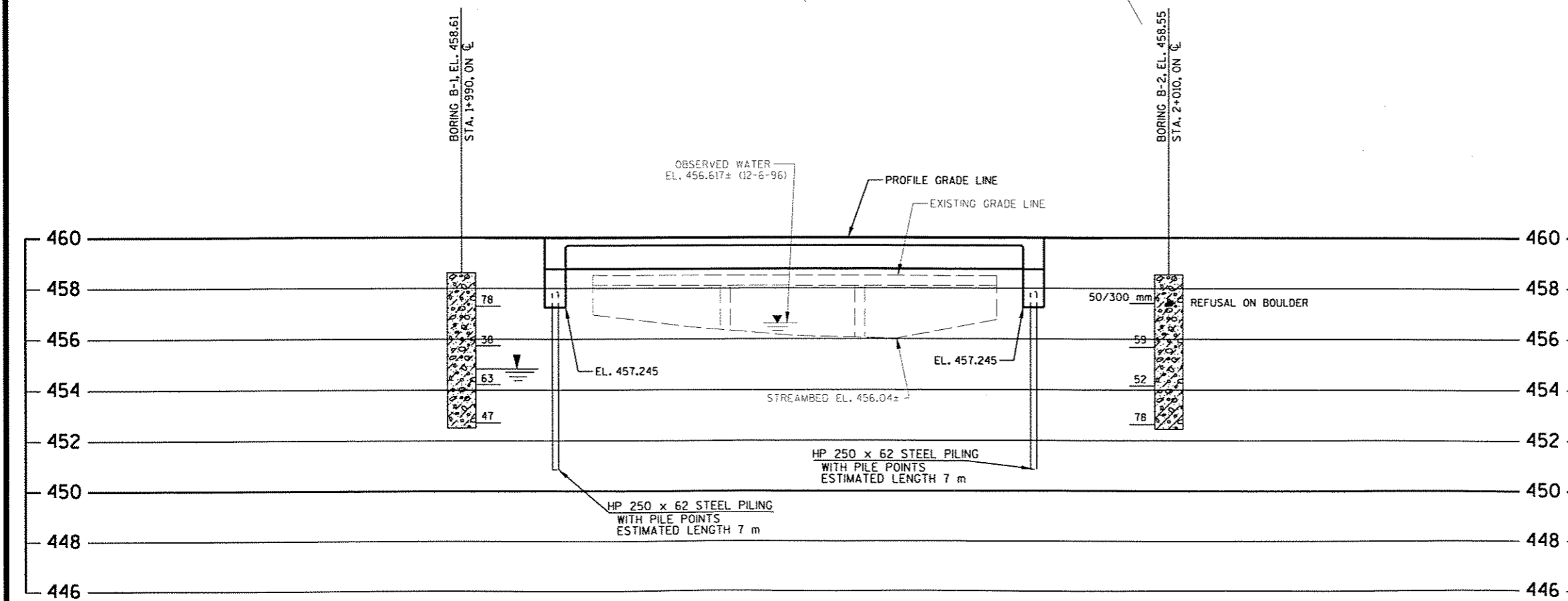
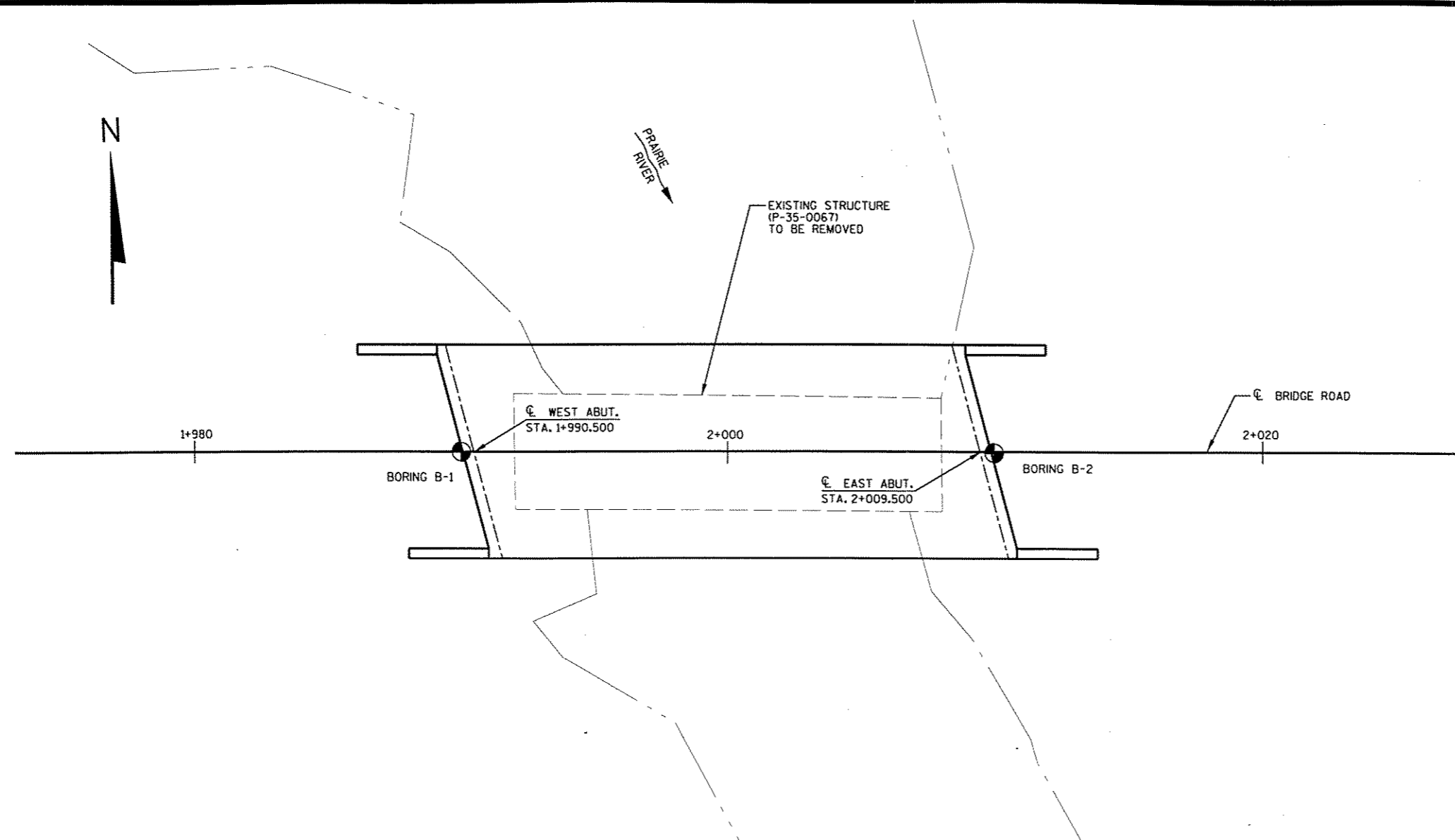


PLOT SCALE: 1:200

MSA #: 93966103

REV. DATE: 9-11-97

ORIGINATOR: RLR  
LEVELS ON: 1, 2, 3, 4, 5, 5, 9, 10, 11, 12, 13, 14, 15, 16, 17, 18, 19, 20, 21, 22, 23, 24, 25, 26, 27, 28, 29, 30, 31, 32, 33, 34, 35, 36, 37, 38, 39, 40, 41, 42, 43, 44, 45, 46, 48, 49, 50, 51, 52, 53, 54, 55, 56, 57, 58, 59, 60, 62, 63



STATE PROJECT NUMBER: 9859-07-71  
SHEET NO.:

ABBREVIATIONS

F - Fine	M - Medium	C - Coarse
Ws - Weathered	So - Sound	

MATERIAL SYMBOLS

Topsoil	Silt	Sandstone
Sand	Peat	Limestone
Gravel	Clay	Igneous Rock

LEGEND OF PROBING

ap - Pocket penetrometer (kPa)

95/152-95 Blows for 152 mm Penetration Probing taken with a 159.1Kg wt. Falling 457 mm on a 51mm O.D. Point.

Refusal 95/152 mm

Probing No. Sta. Elevation 7 Average Blows Per 305 mm

LEGEND OF BORING

Unconfined Strength kPa → 48

Blows Per 305 mm Using 63.6 kg Wt. Falling 762 mm

Wash Sample → Boulders or Cobbles

Shelby Tube → S.T. → Sand

Ground Water Elevation

No Ground Water Observed Above This Elevation

Boring No., Elev. Sta. & Offset

Sandy Gravel

Silty Clay

So Limestone

Unless otherwise specified, the blows per 305 mm at the locations indicated are based on driving a 51mm O.D. x 35 mm I.D. split spoon sampler with a 63.6 kg hammer having a free fall of 762 mm. The blow count is taken in undisturbed soil immediately below a cased or open hole eliminating side friction on the drive pipe.

SUBSURFACE EXPLORATION FOR FOUNDATION DESIGN AND BIDDERS INFORMATION

To obtain relative data concerning the character of material in and upon which the foundation might be built, borings and/or soundings were made at points approximately as indicated on this drawing. The data presented herein represents the findings of the subsurface explorations made. However, because the depths investigated are limited and the area of the borings and/or soundings is very small in relation to the entire area, the DEPT. OF TRANSPORTATION does not warrant conditions below the depths investigated or that the classification of material encountered in these investigations is necessarily typical of the entire site.

BORINGS AND SUBSURFACE REPORT BY:  
GCME, INC.  
DE PERE, WISCONSIN  
BORINGS TAKEN ON 3-19-97

PLANS PREPARED BY:  
MSA PROFESSIONAL SERVICES, INC.  
BARABOO, WISCONSIN

No.	Date	Revision	By
STATE OF WISCONSIN DEPARTMENT OF TRANSPORTATION			
STRUCTURE B-35-136			
Const. Spec.	WI '96"	Drawn By RLR	Plans Checked JMB
SUBSURFACE EXPLORATION			SHEET 3 OF 9