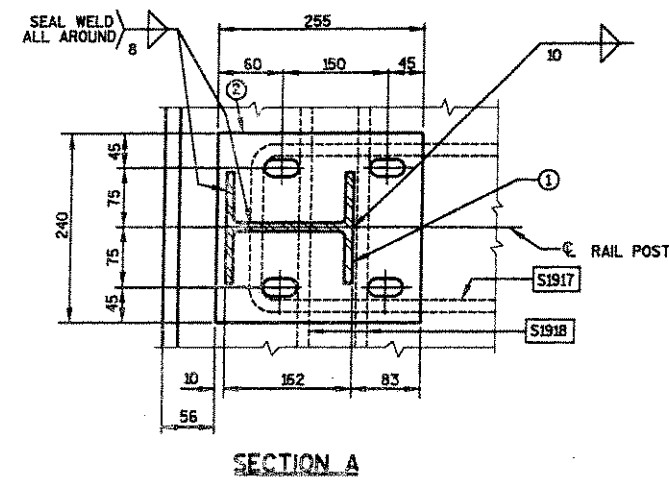
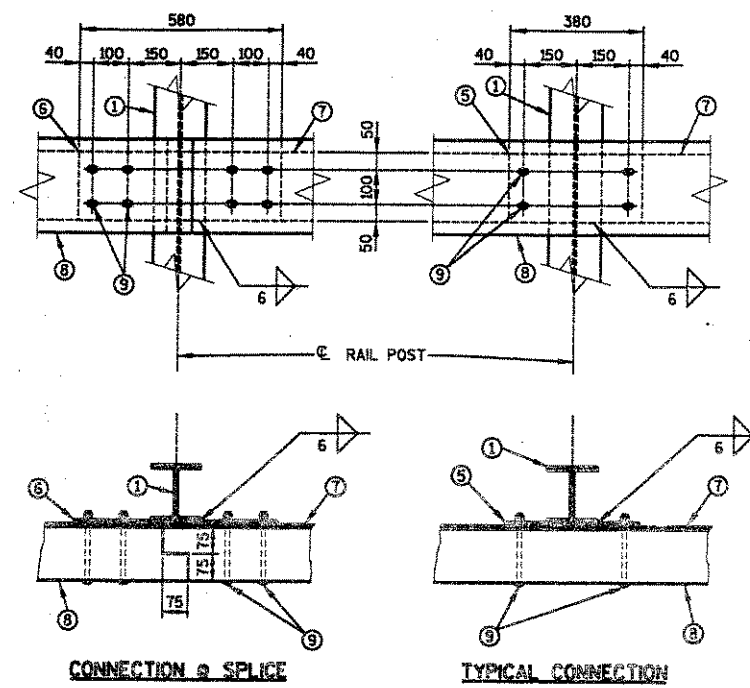


SECTION B THRU RAILING



SECTION A



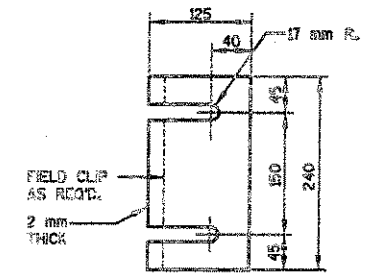
RAIL TO POST CONNECTION DETAILS

LEGEND

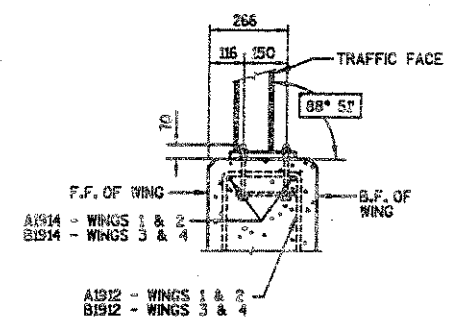
- ① W150x37. CUT BOTTOM OF POST TO MATCH CROSS SLOPE OF ROADWAY. PLACE POST VERTICAL. PLACE POST NORMAL TO GRADE LINE.
- ② PLATE 25 mm x 240 mm x 255 mm WITH 27 mm x 40 mm SLOTTED HOLES FOR ANCHOR BOLTS (③). WELD TO (①) AS SHOWN.
- ③ A325M- M22 x 200 mm LONG HEX BOLT (ZINC COATED) WITH A325M NUT AND WASHER. 4 REQUIRED PER POST. THREAD 75 mm AND PLACE NORMAL TO PLATE (②). CHAMFER TOP OF BOLTS BEFORE THREADING. USE 360 mm LONG AT POSTS ON WINGS.
- ④ 6 mm x 200 mm x 200 mm FLAT BAR, WITH 25 mm DIA. HOLES FOR ANCHOR BOLTS (③).
- ⑤ PLATE 10 mm x 380 mm x 200 mm WITH 4 - 18 mm x 25 mm SLOTTED HOLES FOR BOLTS (⑥). WELD TO (①) AS SHOWN.
- ⑥ PLATE 10 mm x 580 mm x 200 mm WITH 8 - 18 mm x 25 mm SLOTTED HOLES FOR BOLTS (⑥). WELD TO (①) AS SHOWN.
- ⑦ PLATE 10 mm x 200 mm WITH 18 mm HOLES FOR BOLTS (⑥) AND 15 mm HOLES FOR LAG BOLTS (⑩). BOLT TO PLATES (⑤) AND (⑥) AS SHOWN.
- ⑧ 152 mm x 273 mm GLULAM RAIL WITH 18 mm HOLES FOR BOLTS (⑥). CONNECT TO PLATE (⑦) WITH BOLTS (⑥) AND (⑩).
- ⑨ 15 mm DIA. x 200 mm LONG CARRIAGE BOLTS WITH HEX. NUT AND 50 mm WASHERS.
- ⑩ 12 mm DIA. x 100 mm LONG LAG BOLT.

GENERAL NOTES

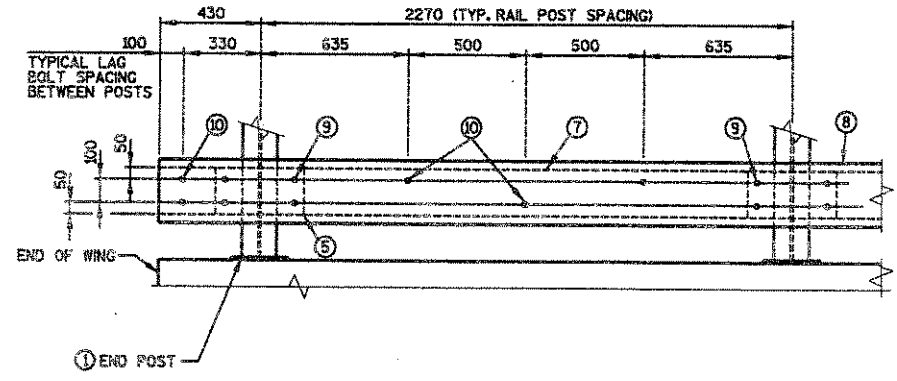
BID ITEM SHALL BE "GLULAM ELEMENT RAILING", WHICH INCLUDES ALL ITEMS SHOWN.
 RAILING SHALL BE FABRICATED WITH 3 SPLICES EACH SIDE OF BRIDGE. PANEL LENGTHS SHALL NOT EXCEED 6700 mm.
 POSTS BASE PLATES, (②) SHALL BE FLAT WITH ALL SURFACES SMOOTH AND FREE FROM WARP AND ALL EDGES SMOOTH, STRAIGHT AND VERTICAL. ALL PLATE CUTS SHALL BE MACHINE OR MACHINE FLAME CUT.
 ALL STEEL MATERIAL, EXCEPT LOWER 200 mm OF ANCHORAGE DETAIL (NO (③) & (④)) SHALL BE PAINTED TO MATCH COLOR OF GLULAM RAIL, SEE SPECIAL PROVISIONS.
 FILL EXPOSED OPENINGS BETWEEN SHIMS AND POST ANCHOR BOLT HOLES WITH NON-STAINING GRAY NON-BITUMINOUS JOINT SEALER. SEAL BOTTOM EDGES OF PLATE (②) TO DECK.
 ALL MATERIALS (EXCEPT GLULAM RAIL) USED IN FABRICATION SHALL BE MADE FROM MATERIALS CONFORMING TO A.S.T.M. DESIGNATION A709M GRADE 250 UNLESS NOTED OTHERWISE.
 STEEL POST SHIMS MAY BE USED UNDER POSTS WHERE REQ'D. FOR ALIGNMENT.
 PRIOR TO PAINTING, ALL STEEL RAILING POSTS AND STEEL PLATES SHALL BE GIVEN A NO. 6 BLAST CLEANING BY S.S.P.C. SPECIFICATIONS.
 ALL POST SPACINGS ARE MEASURED HORIZONTALLY ALONG CENTERLINE OF POST BASE AT EDGE OF SLAB OR WING.



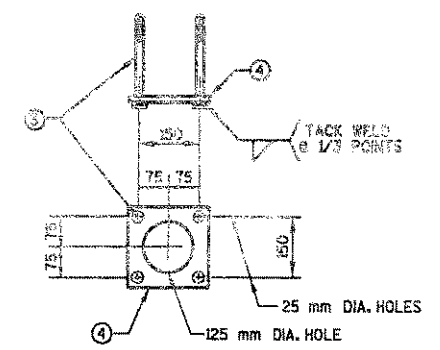
POST SHIM DETAIL
(4 PER POST)



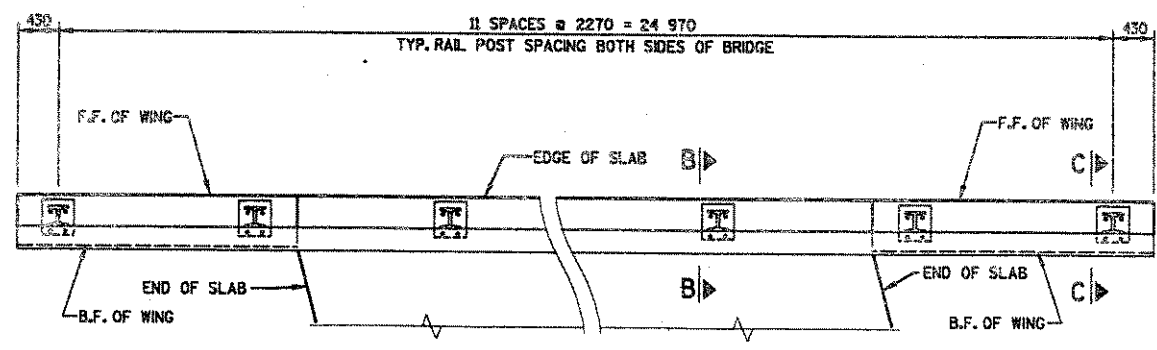
SECTION C THRU WINGS



PART ELEVATION OF RAILING



ANCHORAGE DETAIL



WINGS 2 & 4

PLAN OF RAILING

WINGS 1 & 3

No.	Date	Revision	By
STATE OF WISCONSIN DEPARTMENT OF TRANSPORTATION			
STRUCTURE B-35-136			
Const. Spec.	WI "96"	Drawn By	RLR
		Plans Checked	JMB
GLULAM ELEMENT RAILING			SHEET 9 OF 9

PLOT SCALE: MSA #1 93969103 REV. DATE: 9-22-97
 ORIGINATOR: RLR LEVELS ON: 1, 2, 3, 4, 5, 6, 7, 8, 9, 10, 11, 12, 13, 14, 15, 16, 17, 18, 19, 20, 21, 22, 23, 24, 25, 26, 27, 28, 29, 30, 31, 32, 33, 34, 35, 36, 37, 38, 39, 40, 41, 42, 43, 44, 45, 46, 47, 48, 49, 50, 51, 52, 53, 54, 55, 56, 57, 58, 59, 60.