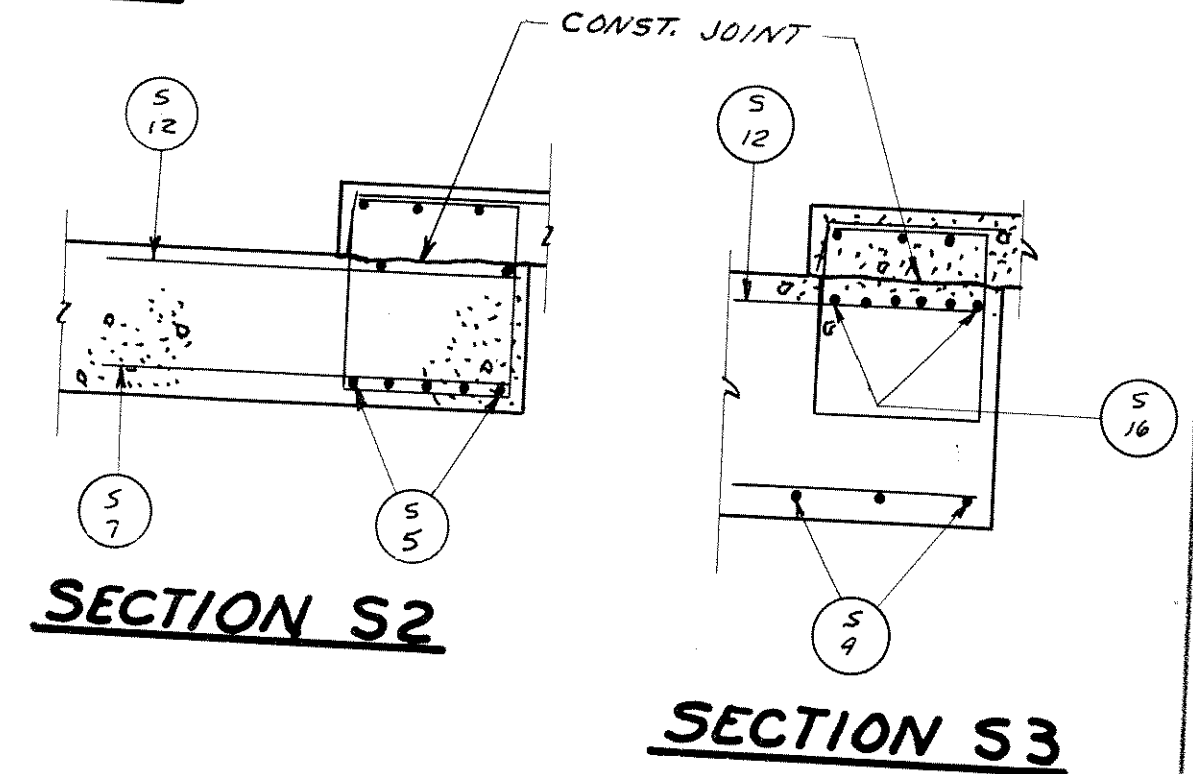
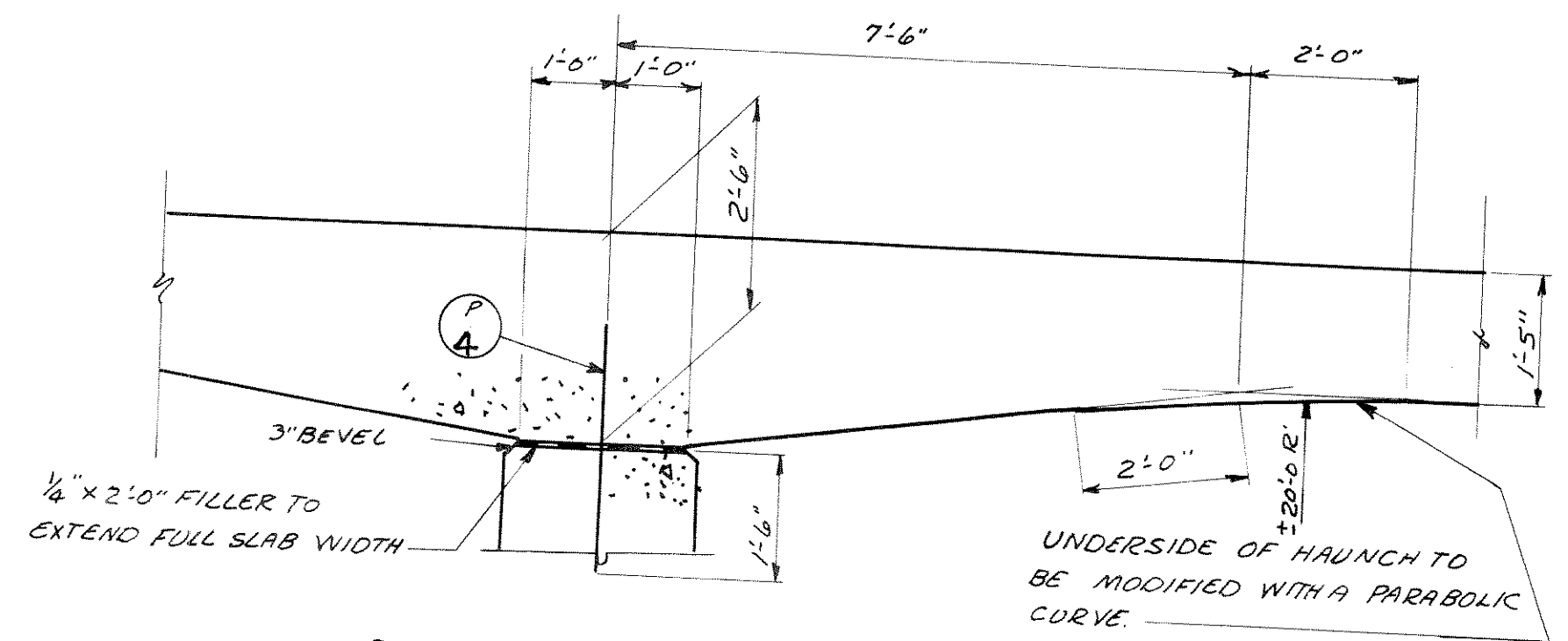
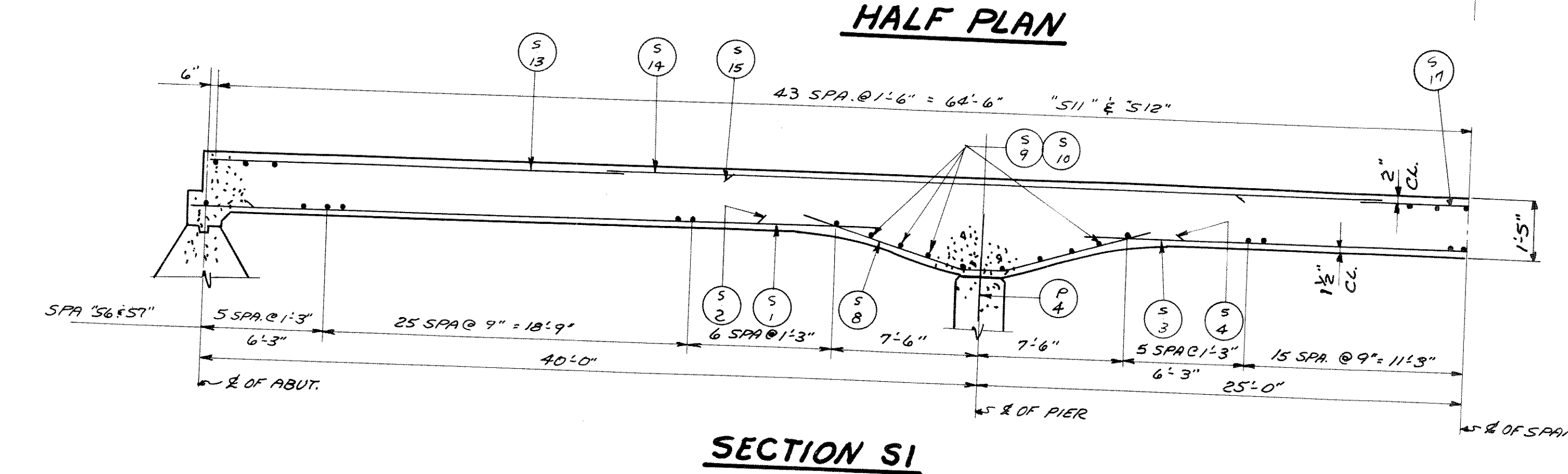
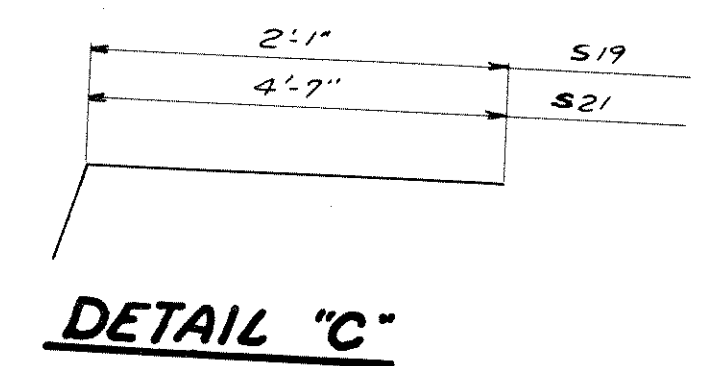
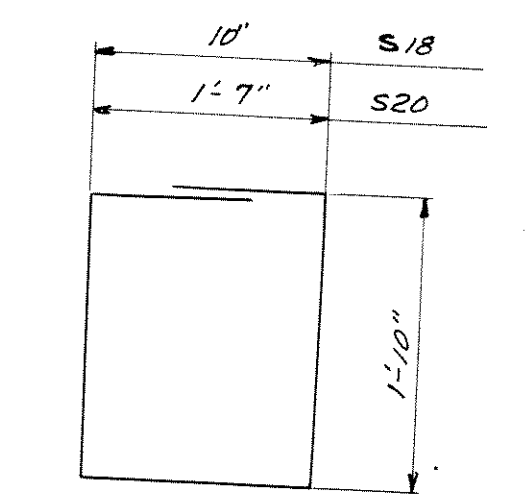
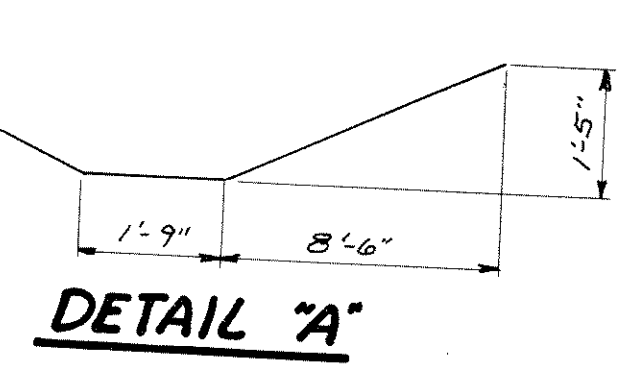
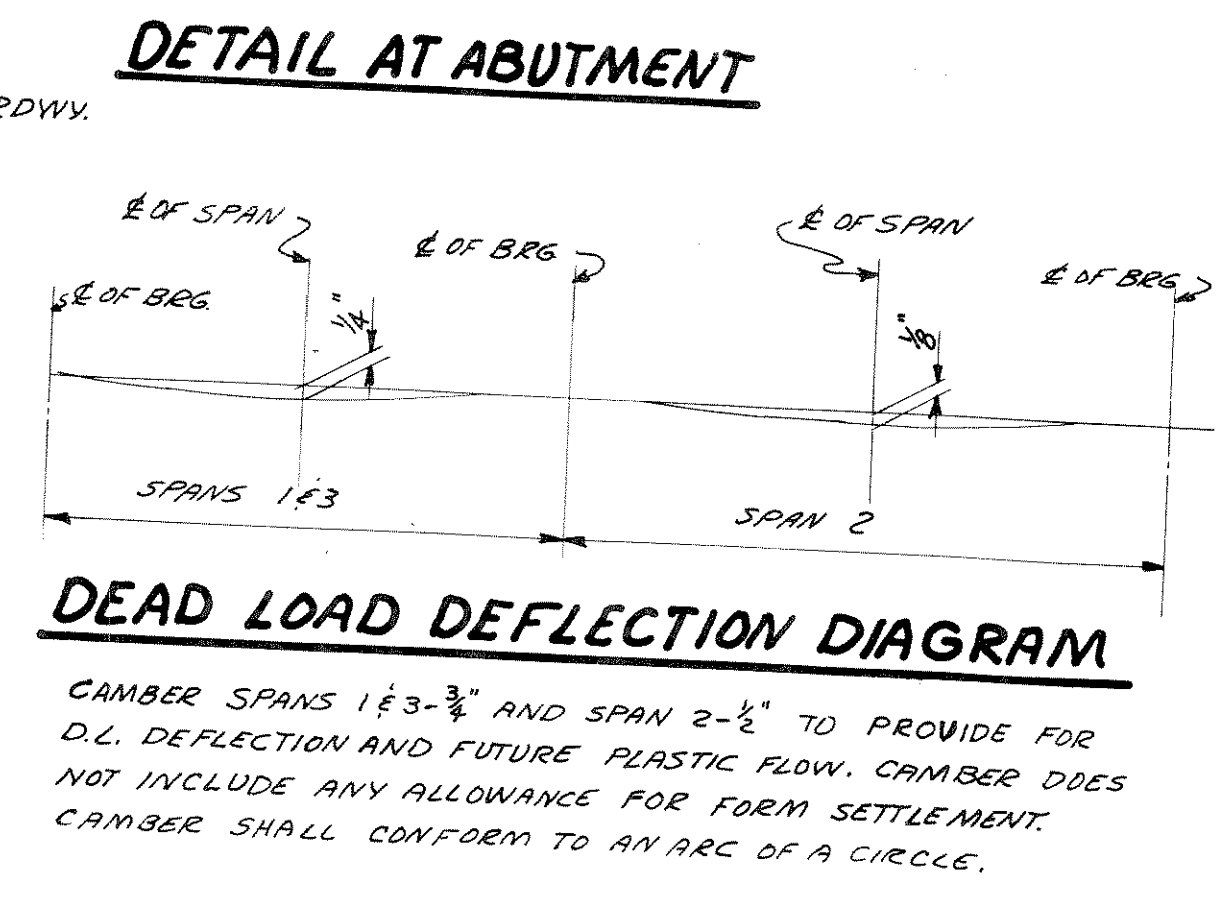
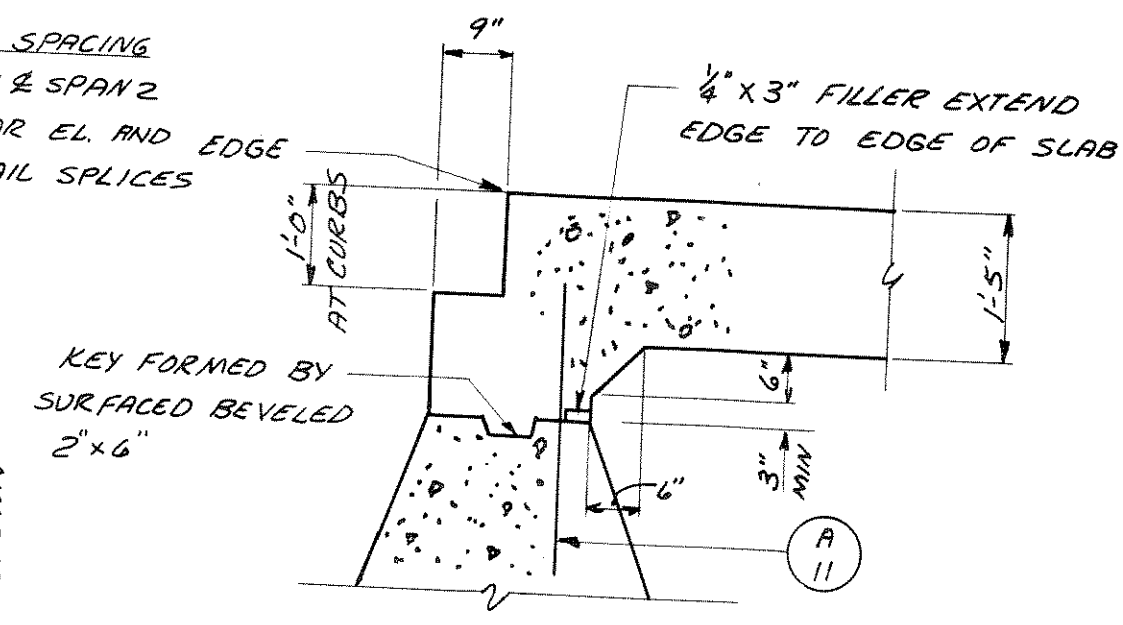
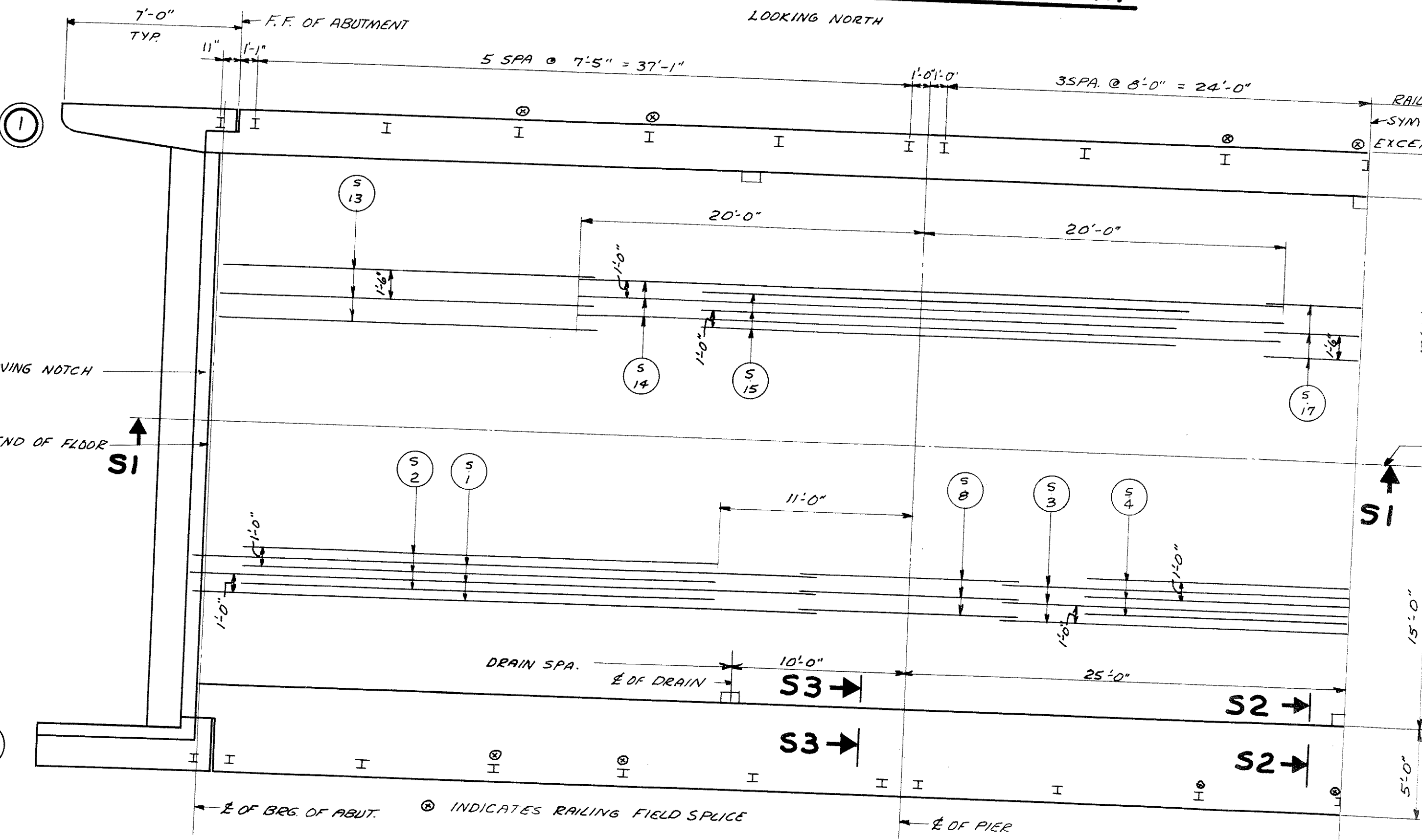
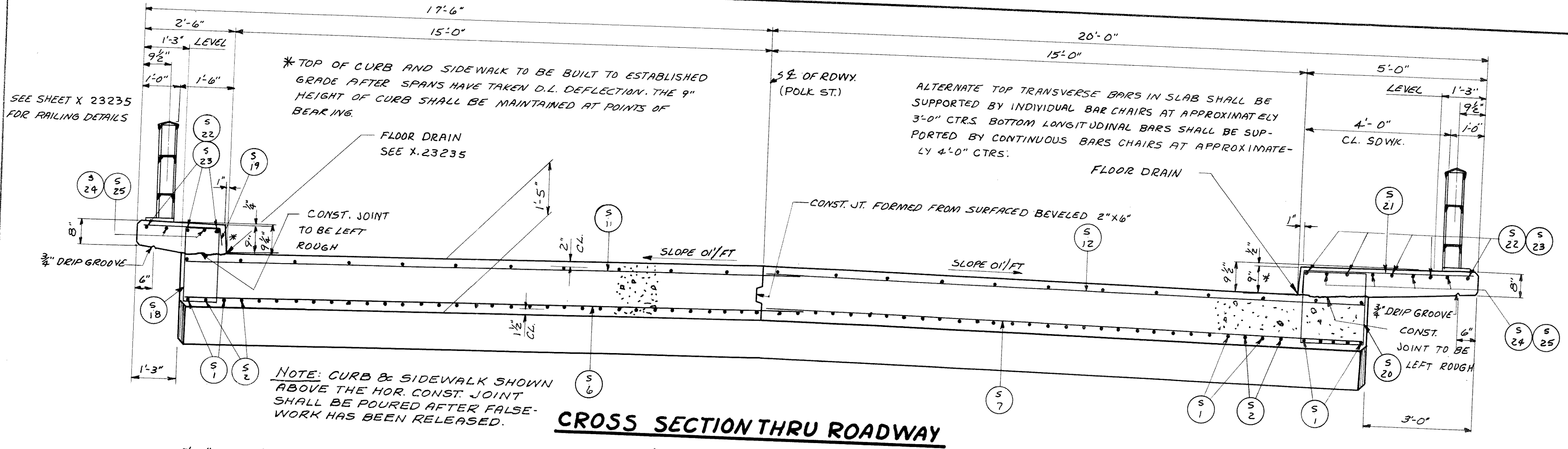


B.P.R. DIVISION	PROJECT	SHEET NUMBER	TOTAL SHEETS
4			

**BILL OF BARS** 58,250#  
DIMENSIONS IN BENDING DETAILS ARE OUT TO OUT.

POUR MARK	NO.	SIZE	LENGTH	SPACING	LOCATION	DET.
S1	72	10	35-0	1-0	BOTTOM OF SLAB - LONG. SPANS 1 & 3	
S2	62	10	27-0	1-0	" " " " " " 1 & 3	
S3	31	9	40-0	1-0	" " " " " " 2	
S4	31	10	30-0	1-0	" " " " " " 2	
S5	5	10	40-0	1-0	" " " " " " 2	
S6	115	5	17-6	SHOWN	BOTTOM OF SLAB AT SIDEWALK SPAN 2	
S7	115	5	16-6	SHOWN	TRANSVERSE - BOTTOM OF SLAB	
S8	66	5	19-0	1-0	" " " " " " "	
S9	16	4	17-9	SHOWN	LONG. AT HAUNCH	A
S10	16	4	16-6	SHOWN	TRANSVERSE - BOTTOM OF HAUNCH	
S11	87	4	17-3	1-6	" " " " " " "	
S12	87	4	16-6	1-6	TOP TRANSVERSE	
S13	44	4	20-9	1-6	" " " " " " "	
S14	62	9	40-0	1-0	LONG. TOP OF SLAB - SPANS 1 & 3	
S15	62	10	28-0	1-0	" " " " " " PERS 1 & 2	
S16	12	11	40-0	SHOWN	TOP OF SLAB AT SIDEWALK PERS 1 & 2	
S17	22	4	12-0	1-6	" " " " " " "	
S18	130	5	6-3	1-0	CURB	B
S19	128	5	2-6	1-0	" " " " " " "	C
S20	130	5	7-6	1-0	SIDEWALK	B
S21	128	5	5-0	1-0	" " " " " " "	C
S22	32	5	28-0	SHOWN	CURB & SIDEWALK SPANS 1 & 3	
S23	16	5	25-3	SHOWN	" " " " " " 2	
S24	12	5	8-0	SHOWN	SPANS 1 & 3 AT PERS 1 & 2	
S25	12	5	10-0	SHOWN	SPAN 2 AT PERS 1 & 2	



REVISED	STATE HIGHWAY COMMISSION OF WISCONSIN		
	<b>SUPERSTRUCTURE</b>		
DESIGN SPEC AA.SHO 57	LOADING H20	DESIGN 1957	
DATE 4-11-61	DESIGN WG	DRAWN J	CHKD BMZ
STRUCTURE B-35-12			SHEET 2 OF 5