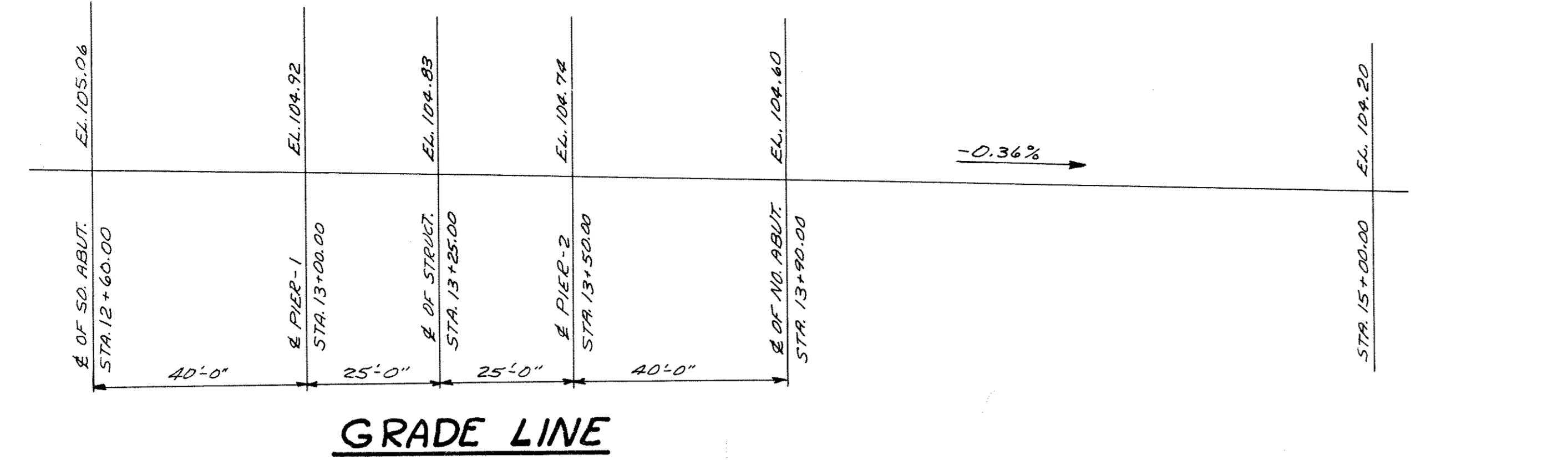


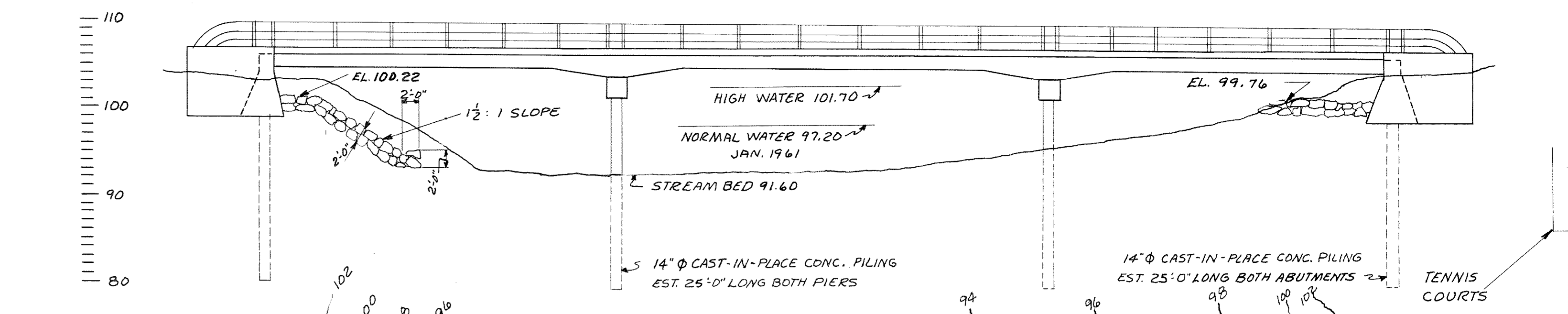
BENCH MARK

NO.	STATION	DESCRIPTION	ELEV.
1	12+70.00	SPIKE IN 12" ELM	79' AT. 100.00

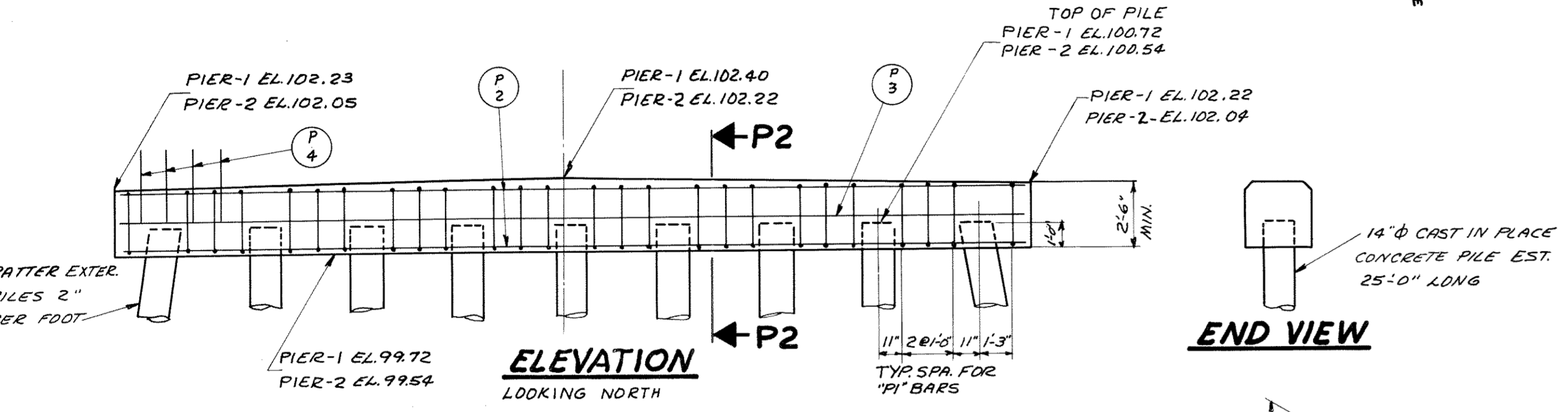
COUNTY & HIGHWAY	ROUTE & SECTION	CLASS & AGREEMENT	B.P.R. DIVISION	PROJECT	SHEET NUMBER	TOTAL SHEETS
35.9	0.0	3.6	4			



GRADE LINE

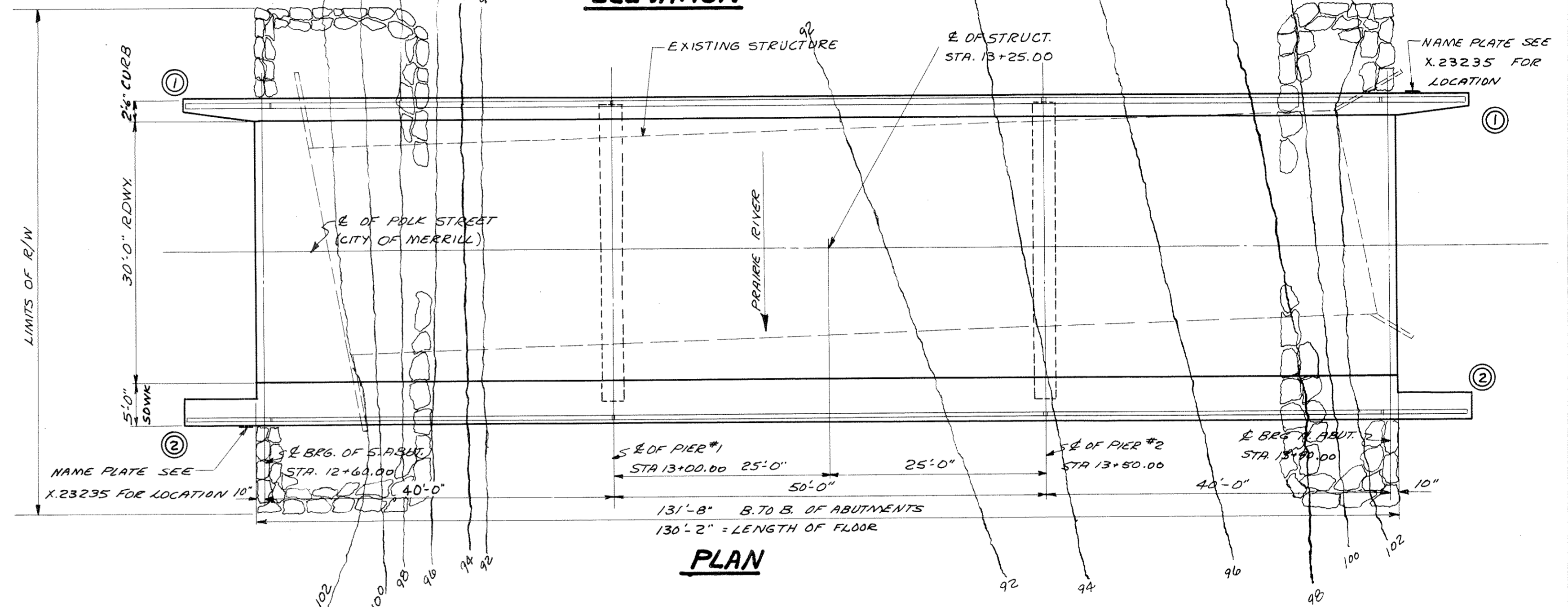


ELEVATION



ELEVATION

LOOKING NORTH



PLAN

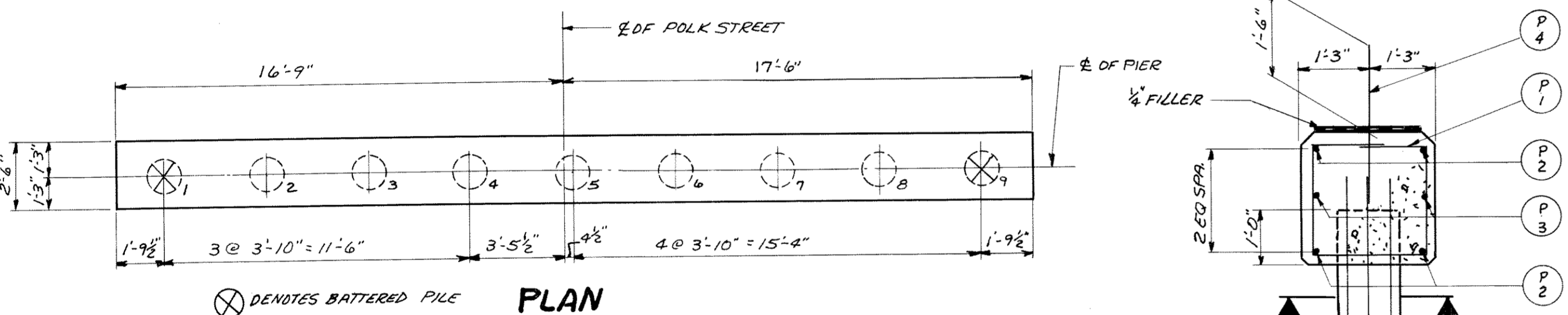
GENERAL NOTES

DRAWINGS SHALL NOT BE SCALED.
 ALL CONCRETE MASONRY SHALL BE GRADE "A"
 BEVEL EXPOSED EDGES OF CONCRETE 1" UNLESS OTHERWISE SPECIFIED.
 BAR STEEL REINFORCEMENT SHALL BE IMBEDDED 2" CLEAR UNLESS OTHERWISE SHOWN OR NOTED.
 THE USE OF STRUCTURAL GRADE BAR STEEL REINFORCEMENT IS PROHIBITED.
 THE ABUTMENTS SHALL BE RIPRAPPED AS SHOWN ABOVE IN ELEVATION AND ON X.23236

PILING AT PIERS AND ABUTMENTS SHALL BE 14" CAST-IN-PLACE CONCRETE PILING ESTIMATED 25'-0" LONG. PILING AT ABUTMENTS SHALL BE DRIVEN TO A MINIMUM BEARING VALUE OF 30 TONS PER PILE AND A MINIMUM BEARING VALUE OF 37 TONS PER PILE AT PIERS.

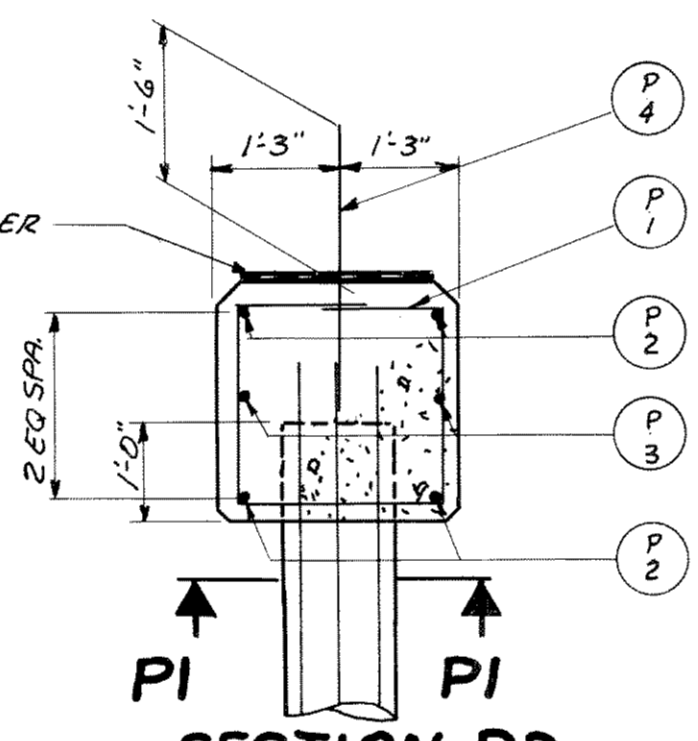
EXISTING STRUCTURE
 TIMBER SUPERSTRUCTURE (8 SPANS AT 14'-6") ON CONCRETE ABUTMENTS AND TIMBER PIERS.

NEW STRUCTURE
 THREE SPAN CONT. R.C. SLAB (20'-0", 50'-0", 40'-0") WITH A 30'-0" CLEAR RDWY. AND A 4'-0" CLEAR SDWK. ON THE EAST SIDE AND A SAFETY CURB ON THE WEST SIDE. SUBSTRUCTURES - R.C. SILL TYPE ABUTS. ON CAST-IN-PLACE PILES AND PIER CAP ON CAST-IN-PLACE PILES.

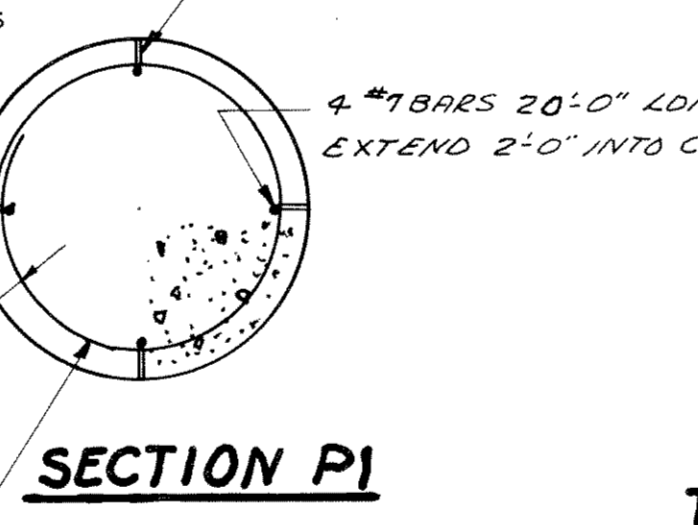


PLAN

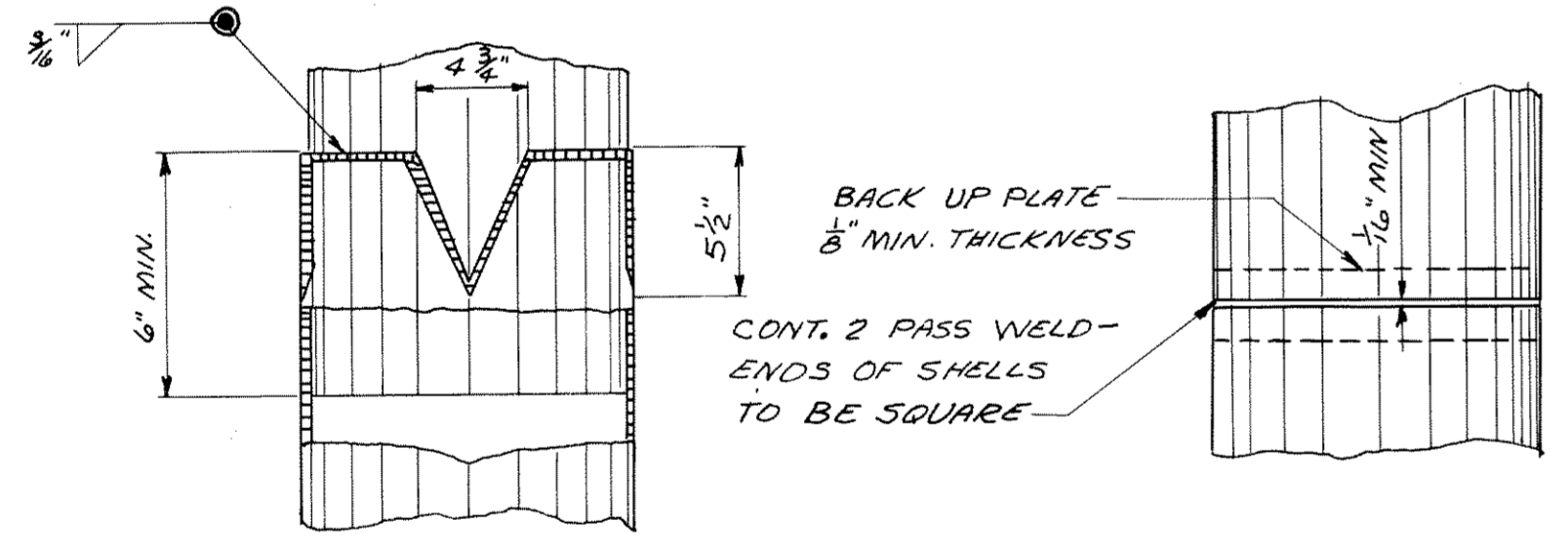
END VIEW



SECTION P2



SECTION P1



FLUTED PILE

PIPE PILE

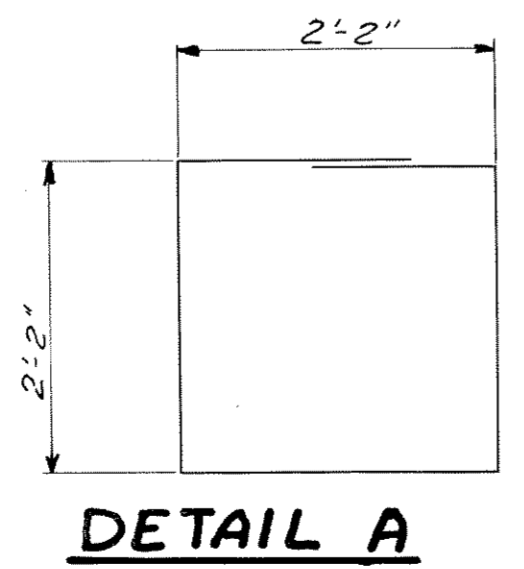
PILE SPLICE DETAILS

BILL OF BARS

DIMENSIONS IN BENDING DETAILS ARE OUT TO OUT.

POUR MARK	NO.	SIZE	LENGTH	SPACING	LOCATION	DET.
P1	52	4	9-9	SHOWN	CAP-STIRRUPS	A
P2	8	5	33-9	SHOWN	" - LONGITUDINAL	
P3	8	4	17-6	SHOWN	" - "	
P4	68	5	3-0	1-0	" & SUPERSTRUCTURE	

930#



DETAIL A

TOTAL ESTIMATED QUANTITIES

BID ITEMS	UNIT	SUPER.	PIERS.	S. ABUT.	N. ABUT.	TOTAL
REMOVING OLD BRIDGE	L.S.	—	—	—	—	1
EXCAVATION FOR STRUCTURES	C.Y.	—	—	40	80	140
GRANULAR BACKFILL	C.Y.	—	—	25	30	55
CONCRETE MASONRY	C.Y.	281.3	16.4	24.9	24.9	347.5
BAR STEEL REINFORCEMENT	L.B.	58,250	930	900	900	60,980
*CAST-IN-PLACE CONCRETE TEST PILE (2835#)	L.S.	—	x	—	x	1
CAST-IN-PLACE CONCRETE PILING - DELIVERED	L.F.	—	425	150	125	700
CAST-IN-PLACE CONCRETE PILING - DRIVEN	L.F.	—	272	150	125	547
FLOOR DRAINS	EACH	6	—	—	—	6
STEEL RAILING	L.F.	283	—	—	—	283
HEAVY RIPRAP	C.Y.	—	—	90	60	150
NON-BID ITEMS						
FILLER	SIZE	1/2 + 1/4	—	—	—	1/2 + 1/4
ALUMINUM OR ZINC PLATES	SF.	11	—	—	—	11

* DRIVE ONE 35'-0" LONG C.I.P. CONCRETE TEST PILE AT N. ABUT. AND ONE 35'-0" LONG C.I.P. CONCRETE TEST PILE AT PIER 2

LIST OF DRAWINGS

1. LAYOUT & PIERS	X.23233
2. SUPERSTRUCTURE	X.23234
3. RAILING & DRAIN	X.23235
4. ABUTMENTS	X.23236
5. SUBSURFACE EXPLORATION	X.23237

STATE HIGHWAY COMMISSION OF WISCONSIN

LAYOUT & PIERS

CO. LINCOLN TOWN MERRILL STA. 13+25.00

SECTION 11 TOWN 31N RANGE 6E

DESIGN SPEC. A.A.S.H.O. 57 LOADING H20 CONSP. 1957

DATE 4-11-61 DESIGN WG DRAWN JF CKE: BAZ

SUBMITTED *J.V.B. Schultz* ENGINEER OF BRIDGE

APPROVED *E.C. Ruttig* STATE HIGHWAY ENGINEER

STRUCTURE **B-35-12** SHEET **1** OF **5**

X.23233