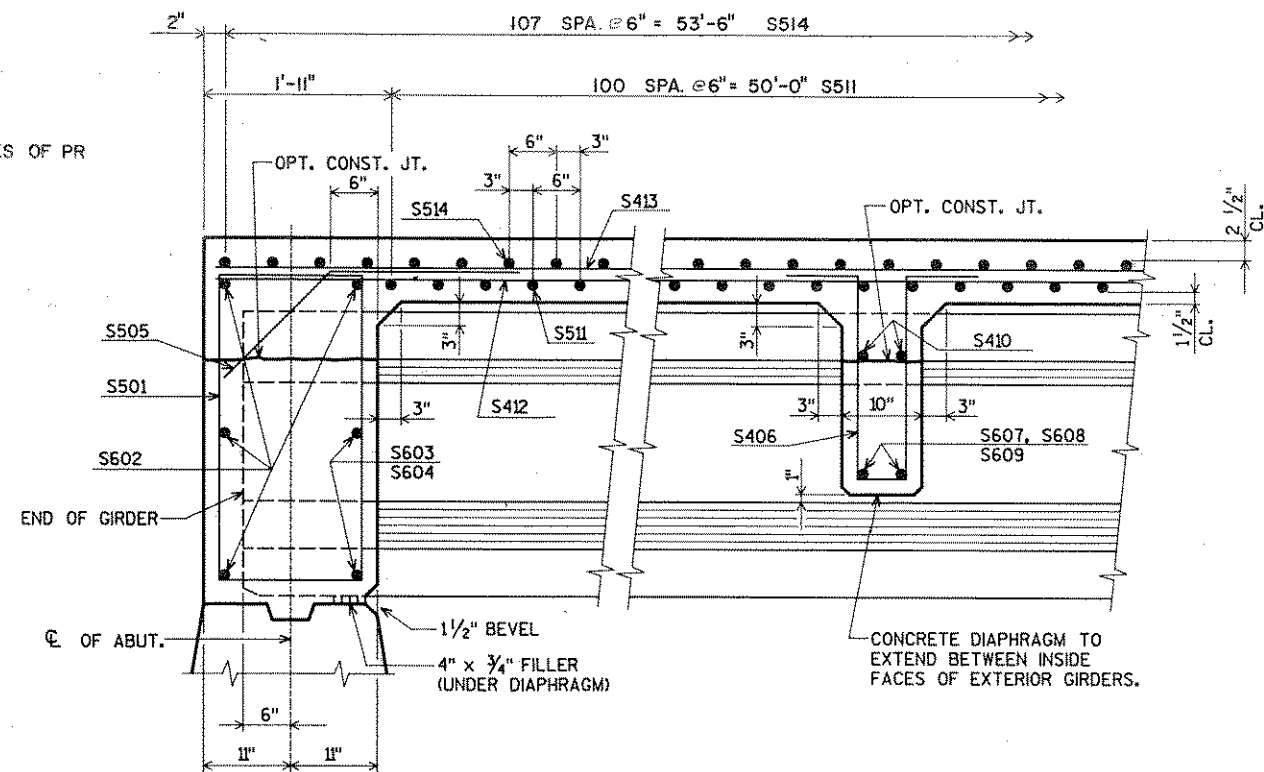


SUBSET: TRBRIDGE  
FILE NAME: 0923ISUP

LEVELS ON 4, 2, 3, 4, 5, 6, 7, 8, 9, 10, 11, 12, 13, 14, 15, 16, 17, 18, 19, 20, 21, 22, 23, 24, 25, 26, 27, 28, 29, 30, 31, 32, 33, 34, 35, 36, 37, 38, 39, 40, 41, 42, 43, 44, 45, 46, 47, 48, 49, 50, 51, 52, 53, 54, 55, 56, 57, 58, 59, 60, 61, 62, 63

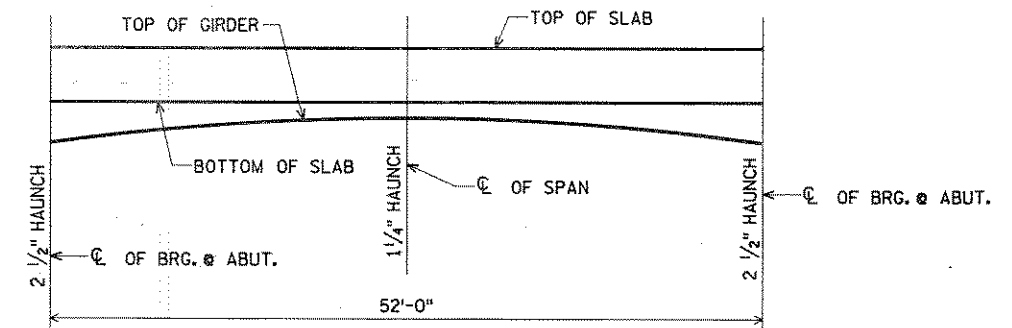
DATE: \_\_\_\_\_  
DATE: \_\_\_\_\_  
BACK CHECKED BY: \_\_\_\_\_  
CORRECTED BY: \_\_\_\_\_

ALL SURFACES OF PR

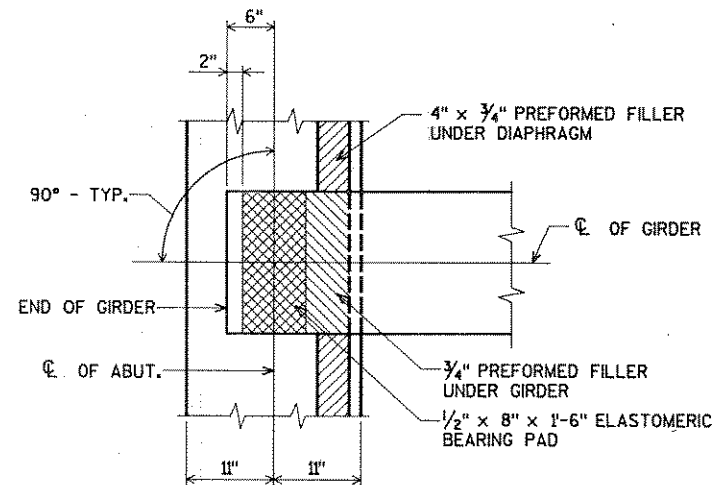


**PART LONGITUDINAL SECTION**

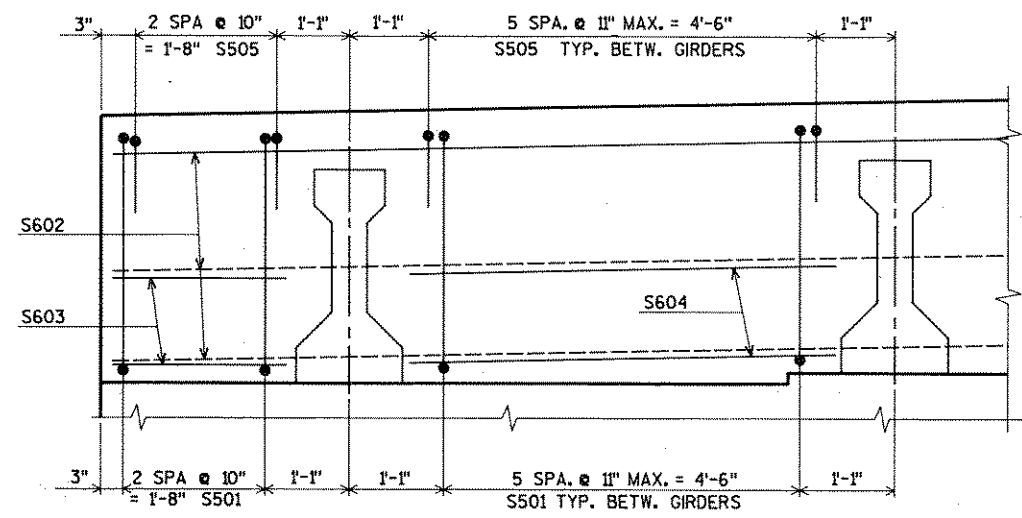
ALL SURFACES OF PRESTRESSED GIRDERS THAT WILL BE WITHIN THE LIMITS OF THE ABUTMENT CONCRETE DIAPHRAGM SHALL BE COATED WITH PARAFIN WAX.



**SLAB FORMING DIAGRAM**



**BEARING PLAN**



**SECTION AT ABUTMENT**

No.	Date	Revision	By
PLANS PREPARED BY			
<b>AYRES ASSOCIATES</b> Engineers/Architects Planners/Surveyors Owen Ayres & Associates Inc. Eau Claire, Wisconsin			
STATE OF WISCONSIN DEPARTMENT OF TRANSPORTATION			
STRUCTURE B-35-110			
Const. Spec.	1989	Drawn By	G.L.D.
		Plans Checked	C.B.M.
SUPERSTRUCTURE DETAILS			SHEET 8 OF 9
			X 02833