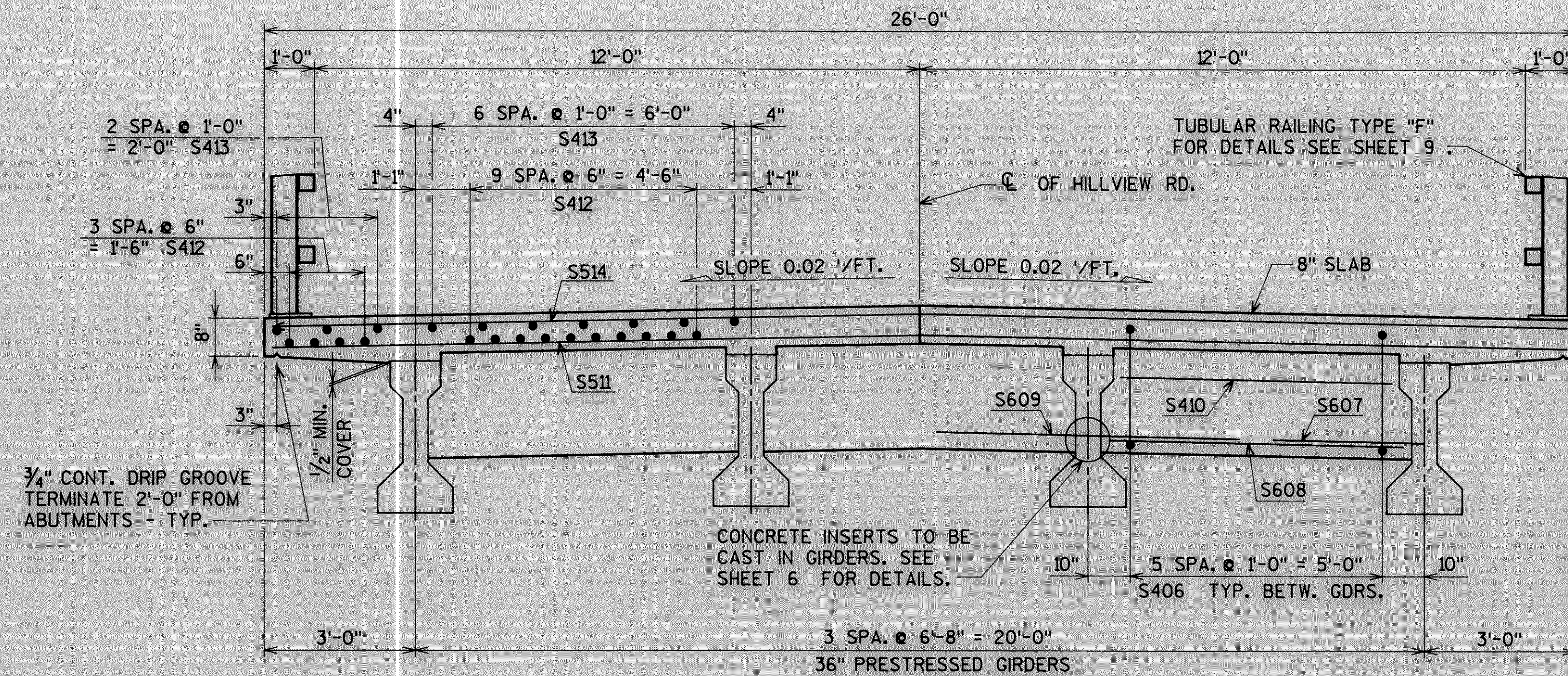
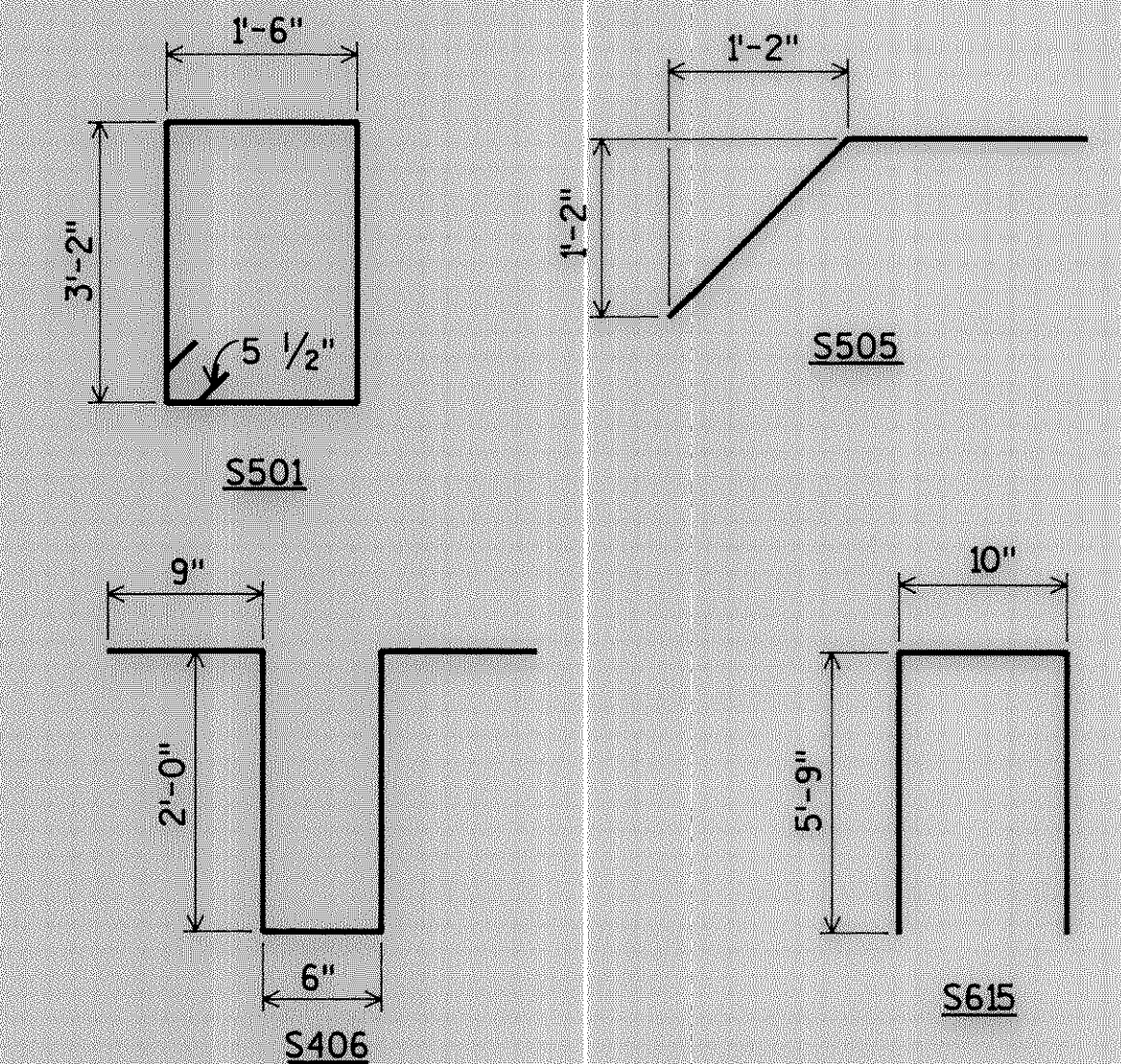


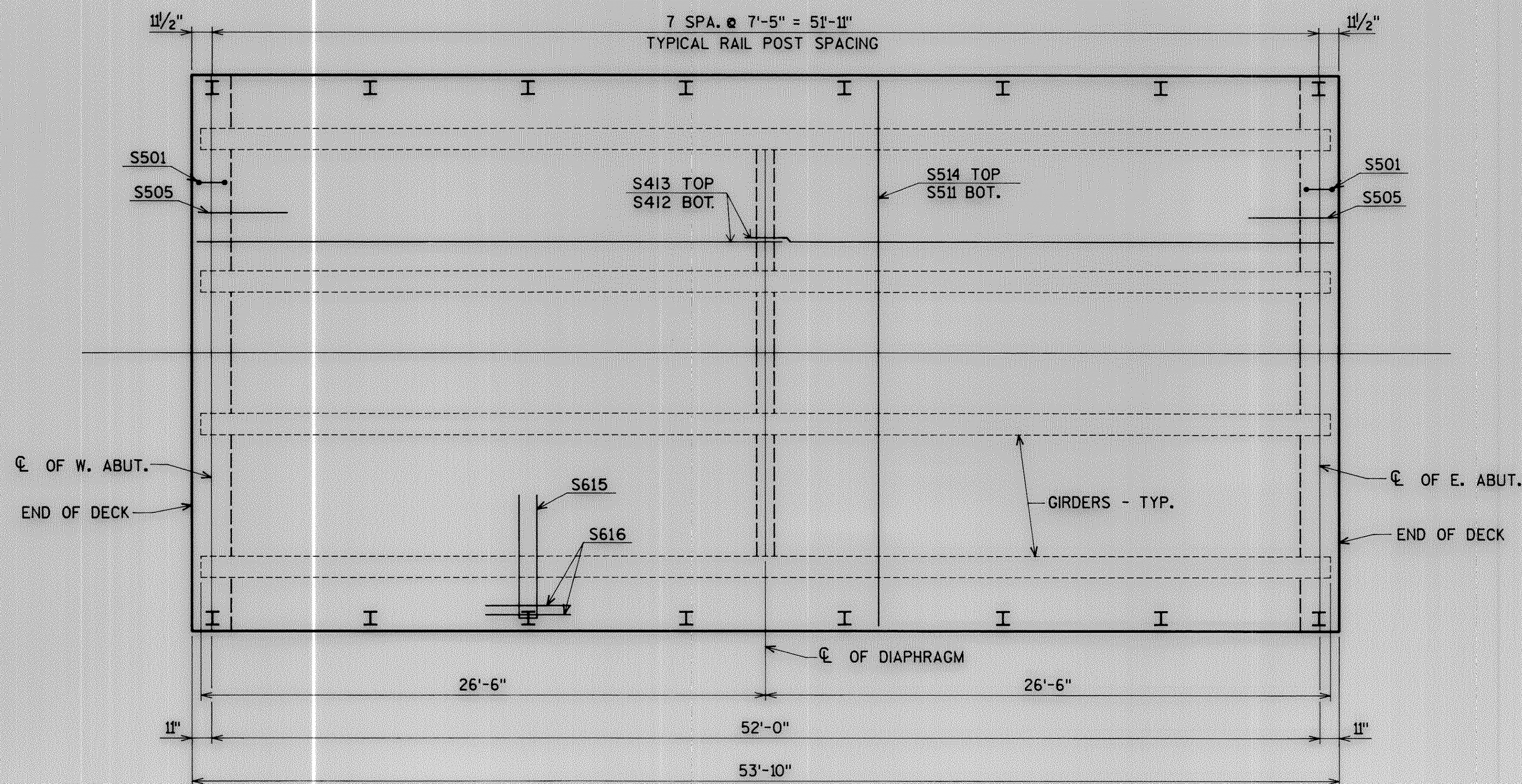
BILL OF BARS

BAR NO.	NO. REQ'D.	LENGTH	BENT BAR	COATED BAR	CUT. DIAGR.	5,220* UNCOATED 4,550 * COATED	
						LOCATION	
S501	48	10-0	X			DIAPHRAGM @ ABUT. VERT.	
S602	8	25-8				DIAPHRAGM @ ABUT. HORIZ.	
S603	8	1-11				DIAPHRAGM @ ABUT. HORIZ.	
S604	12	4-10				DIAPHRAGM @ ABUT. HORIZ.	
S505	48	3-7	X	X		DIAPHRAGM @ ABUT.	
S406	18	5-8	X			DIAPHRAGM IN SPAN VERT.	
S607	4	3-1				DIAPH. IN SPAN HORIZ. EXT. GDR.	
S608	6	5-10				DIAPH. IN SPAN HORIZ. BETW. GDR.	
S609	4	6-2				DIAPH. IN SPAN HORIZ. INT. GDR.	
S410	6	5-4				DIAPH. IN SPAN HORIZ. BETW. GDR.	
S511	101	25-8				SLAB TRANSVERSE BOT.	
S412	76	27-6				SLAB LONGITUDINAL BOT.	
S413	54	27-6	X			SLAB LONGITUDINAL TOP	
S514	108	25-8	X			SLAB TRANSVERSE TOP	
S615	16	12-0	X	X		SLAB @ RAIL POSTS	
S616	32	4-0	X			SLAB @ RAIL POSTS	

BENDING DIMENSIONS ARE OUT TO OUT OF BARS.
 ☒ THREAD ONE END 3".



TYPICAL CROSS SECTION THRU DECK



PLAN

No.	Date	Revision	By
PLANS PREPARED BY			
AYRES ASSOCIATES Engineers/Architects Planners/Surveyors Owen Ayres & Associates Inc. Eau Claire, Wisconsin			
STATE OF WISCONSIN DEPARTMENT OF TRANSPORTATION			
STRUCTURE B-35-II0			
Const. Spec.	1989	Drawn By G.L.D.	Plans Checked C.B.M.
SUPERSTRUCTURE			SHEET 7 OF 9 X 82833

SUBSET: TRBRIDGE
 FILE NAME: 09231SUP

LEVELS ON -1,2,3,4,5,6,7,8,9,10,11,12,13,14,15,16,17,18,19,20,21,22,23,24,25,26,27,28,29,30,31,32,33,34,35,36,37,38,39,40,41,42,43,44,45,46,47,48,49,50,51,52,53,54,55,56,57,58,59,60,61,62,63

CHECKED BY: DATE:
 BACK CHECKED BY: DATE:
 CORRECTED BY: DATE: