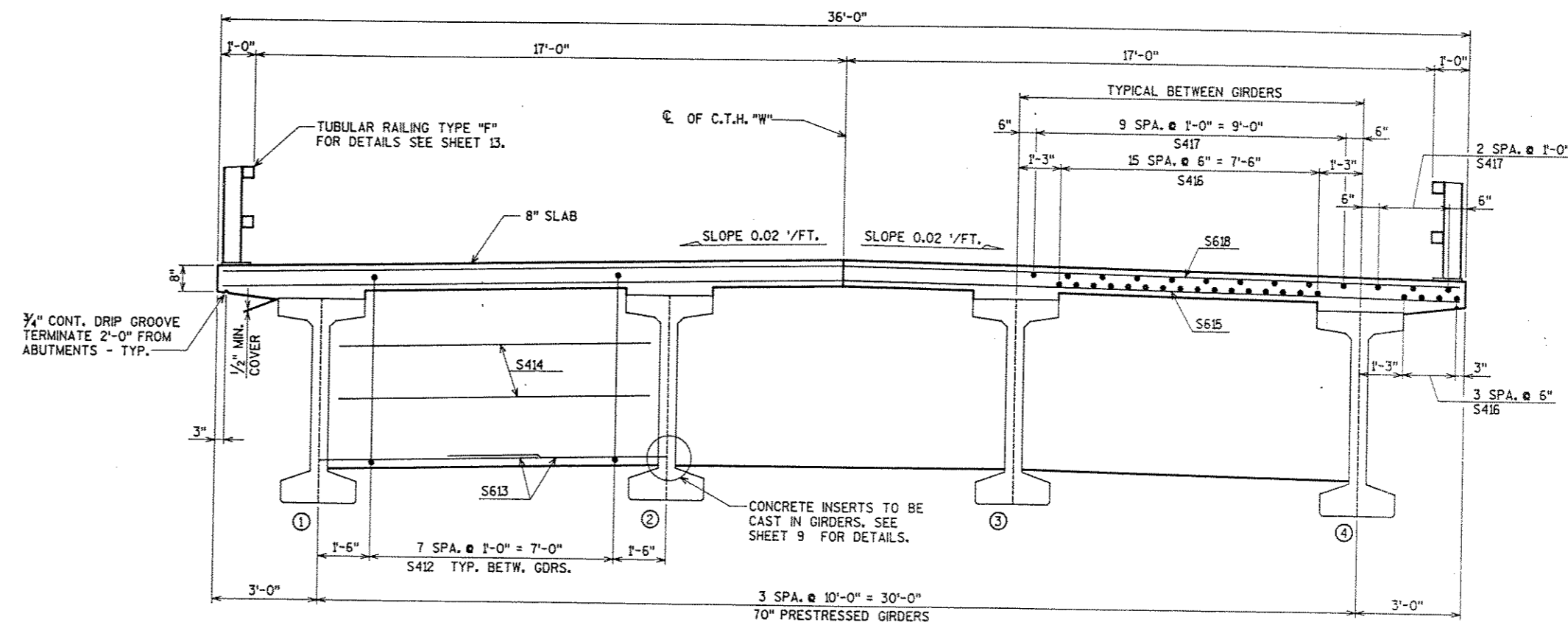


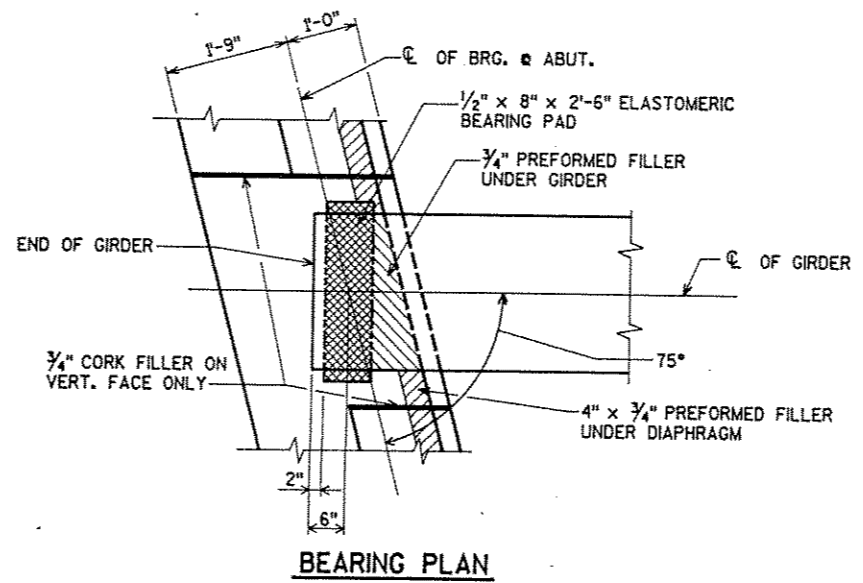
SUBSET: TRBRIDGE  
FILE NAME: 09232SUP

LEVELS ON 1, 2, 3, 4, 5, 6, 7, 8, 9, 10, 11, 12, 13, 14, 15, 16, 17, 18, 19, 20, 21, 22, 23, 24, 25, 26, 27, 28, 29, 30, 31, 32, 33, 34, 35, 36, 37, 38, 39, 40, 41, 42, 43, 44, 45, 46, 47, 48, 49, 50, 51, 52, 53, 54, 55, 56, 57, 58, 59, 60, 61, 62, 63

CHECKED BY: \_\_\_\_\_  
DATE: \_\_\_\_\_  
CORRECTED BY: \_\_\_\_\_  
DATE: \_\_\_\_\_



TYPICAL CROSS SECTION THRU DECK  
(LOOKING NORTH)

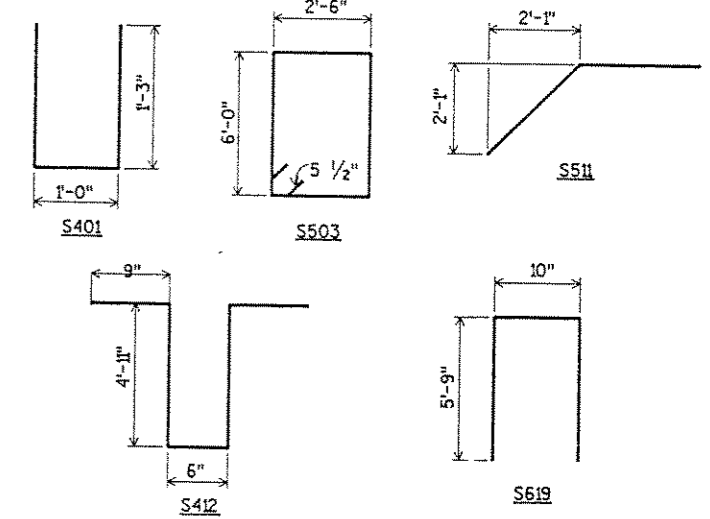


BEARING PLAN

BILL OF BARS

BAR NO.	NO. REQ'D.	LENGTH	BENT BAR COATED BAR CUT, DIAGR.	16,230# UNCOATED 13,710# COATED		LOCATION
S401	42	3-4	X			DIAPH. @ ABUT. @ NOTCH
S402	12	6-9				DIAPH. @ ABUT. @ NOTCH
S503	60	17-7	X			DIAPHRAGM @ ABUT. VERT.
S604	6	36-11				DIAPHRAGM @ ABUT. HORIZ.
S605	8	1-7				DIAPH. @ ABUT. HORIZ. @ EXT. GDRS.
S606	12	7-9				DIAPH. @ ABUT. HORIZ. @ EXT. GDRS.
S407	14	36-11				DIAPHRAGM @ ABUT. HORIZ.
S408	28	1-6				DIAPH. @ ABUT. HORIZ. @ EXT. GDRS.
S409	42	7-5				DIAPH. @ ABUT. HORIZ. @ EXT. GDRS.
S510	16	6-0				DIAPH. @ ABUT. THRU GDR.
S511	106	6-11	X	X		DIAPH. @ ABUT.
S412	48	11-6	X			DIAPHRAGM IN SPAN VERT.
S613	24	6-4				DIAPHRAGM IN SPAN HORIZ.
S414	24	9-2				DIAPHRAGM IN SPAN HORIZ.
S615	159	36-11				SLAB TRANSVERSE BOT.
S416	168	37-10				SLAB LONGITUDINAL BOT.
S417	108	37-10	X			SLAB LONGITUDINAL TOP
S618	168	36-11	X			SLAB TRANSVERSE TOP
S619	30	12-0	X	X		SLAB @ RAIL POSTS
S620	60	4-0	X	X		SLAB @ RAIL POSTS

BENDING DIMENSIONS ARE OUT TO OUT OF BARS.  
 [Symbol] THREAD ONE END 3".  
 [Symbol] BEND IN FIELD.



No.	Date	Revision	By
PLANS PREPARED BY <b>AYRES ASSOCIATES</b> Engineers/Architects Planners/Surveyors Owen Ayres & Associates Inc. Eau Claire, Wisconsin			
STATE OF WISCONSIN DEPARTMENT OF TRANSPORTATION STRUCTURE B-35-III			
Const. Spec.	1989	Drawn By	G.L.D.
		Plane Checked	C.B.M.
SUPERSTRUCTURE			SHEET 10 OF 13
			X 82834