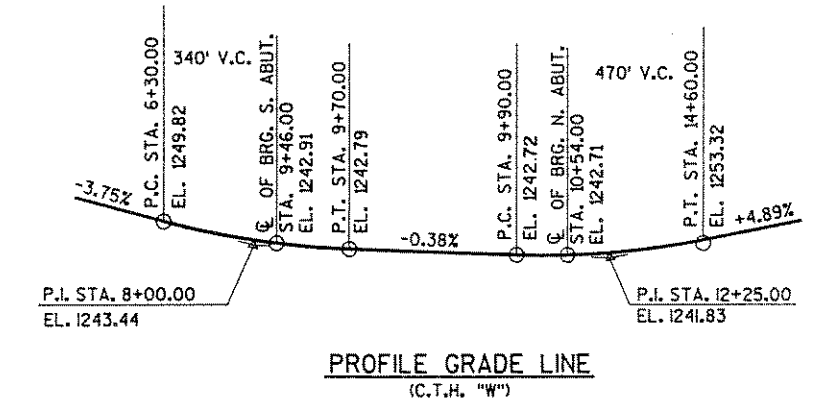
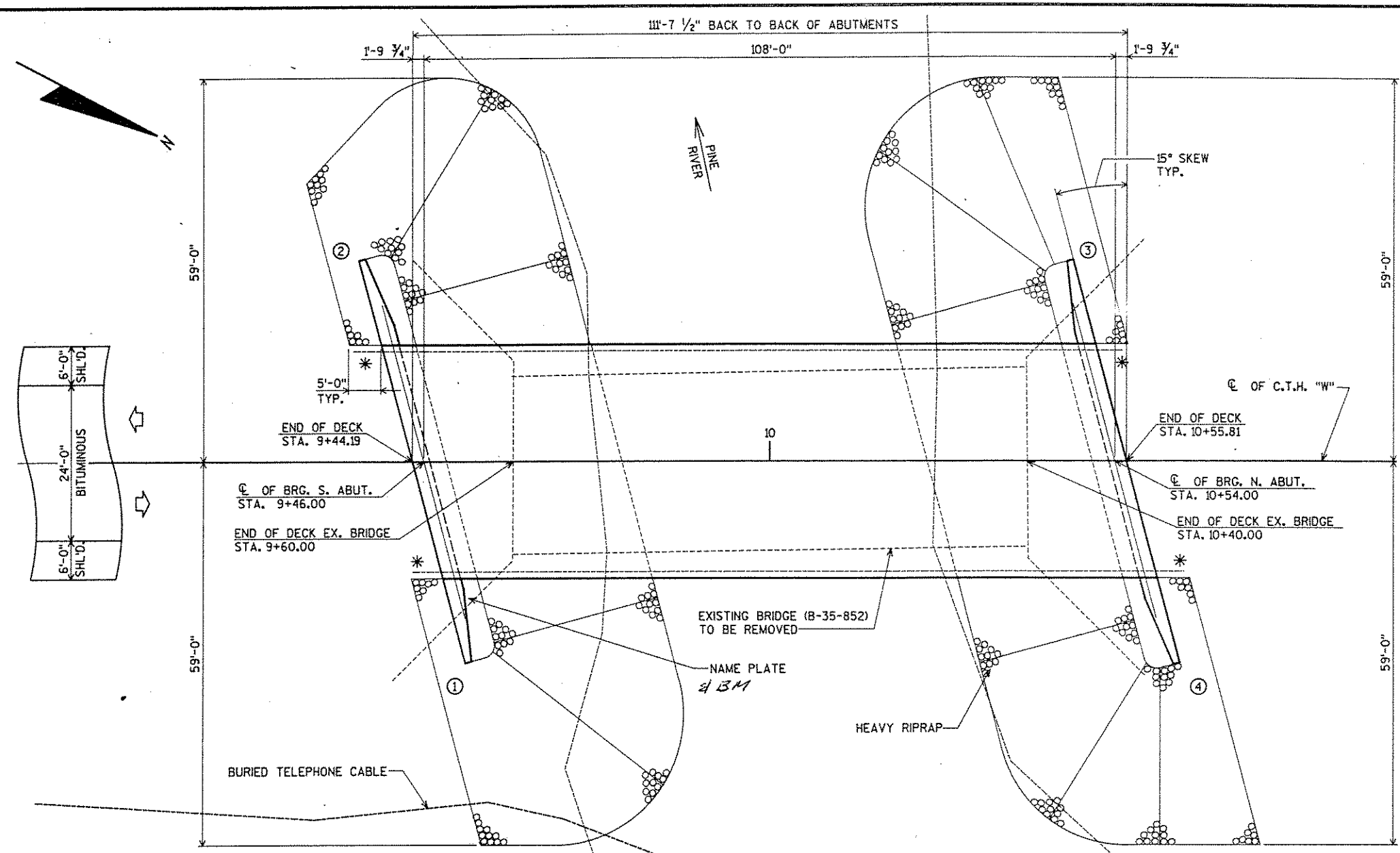


TRBRIDGE
 FILE NAME: 09232GP
 LEVELS ON 1, 2, 3, 4, 5, 6, 7, 8, 9, 10, 11, 12, 13, 14, 15, 16, 17, 18, 19, 20, 21, 22, 23, 24, 25, 26, 27, 28, 29, 30, 31, 32, 33, 34, 35, 36, 37, 38, 39, 40, 41, 42, 43, 44, 45, 46, 47, 48, 49, 50, 51, 52, 53, 54, 55, 56, 57, 58, 59, 60, 61, 62, 63

STATE PROJECT NUMBER	SHEET NO.
9429-01-70	8

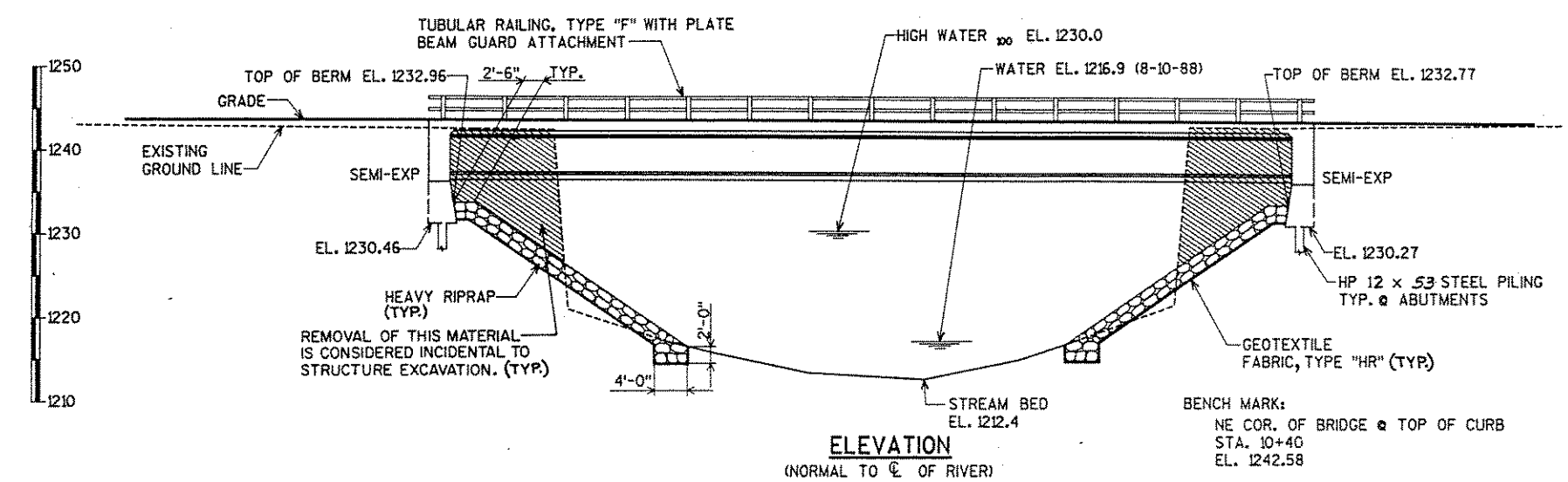
LIST OF DRAWINGS

1. GENERAL PLAN
2. QUANTITIES & NOTES
3. SUBSURFACE EXPLORATION
4. SOUTH ABUTMENT
5. NORTH ABUTMENT
6. ABUTMENT STEEL DETAILS AND BILL OF BARS
7. ALT. STEEL INTER. DIAPHRAGM DETAILS
8. 70" PRESTRESSED GIRDER DETAILS
9. 70" PRESTRESSED GIRDER DETAILS
10. SUPERSTRUCTURE
11. SUPERSTRUCTURE PLAN
12. SUPERSTRUCTURE DETAILS
13. TUBULAR RAILING TYPE "F"

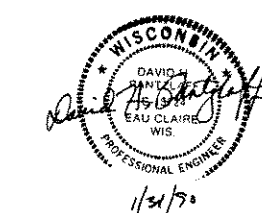


* ANCHOR ASSEMBLY FOR PLATE BEAM TYPE GUARDRAIL.
 ○ INDICATES WING NUMBER.

PLAN
SINGLE SPAN, 70" PRESTRESSED GIRDER BRIDGE



ELEVATION
(NORMAL TO C. OF RIVER)



BRIDGE OFFICE CONTACT:
 D. BABLER
 (608) 266-8486

No.	Date	Revision	By
PLANS PREPARED BY AYRES ASSOCIATES Engineers/Architects Planners/Surveyors Owen Ayres & Associates Inc. Eau Claire, Wisconsin			
STATE OF WISCONSIN DEPARTMENT OF TRANSPORTATION			
STRUCTURE B-35-III C.T.H. "W" OVER PINE RIVER			
County	LINCOLN	Town/Village/City	PINE RIVER
Design Spec.	A.A.S.H.T.O. '89	Load	HS-20
Design Spec.		Const. Spec.	1989
Designed By	MNL	Design Checked	CBM
Drawn By	C.L.P.	Plans Checked	DHP
Approved	Stanley W. Wood		2/19/70
	State Bridge Engineer		Date
GENERAL PLAN			SHEET 1 OF 13 X 82834