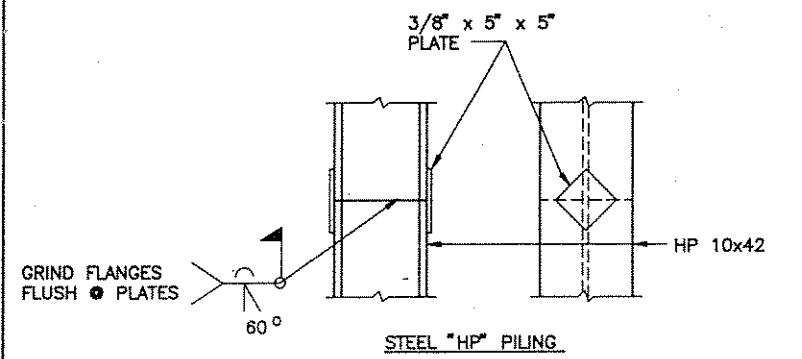
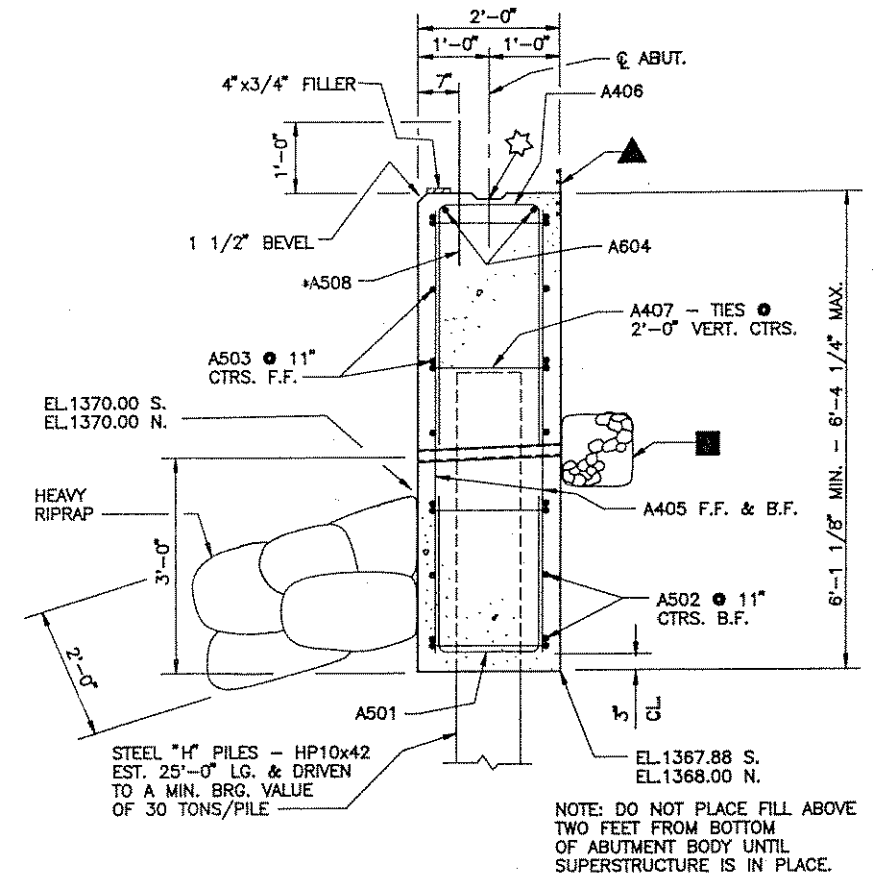
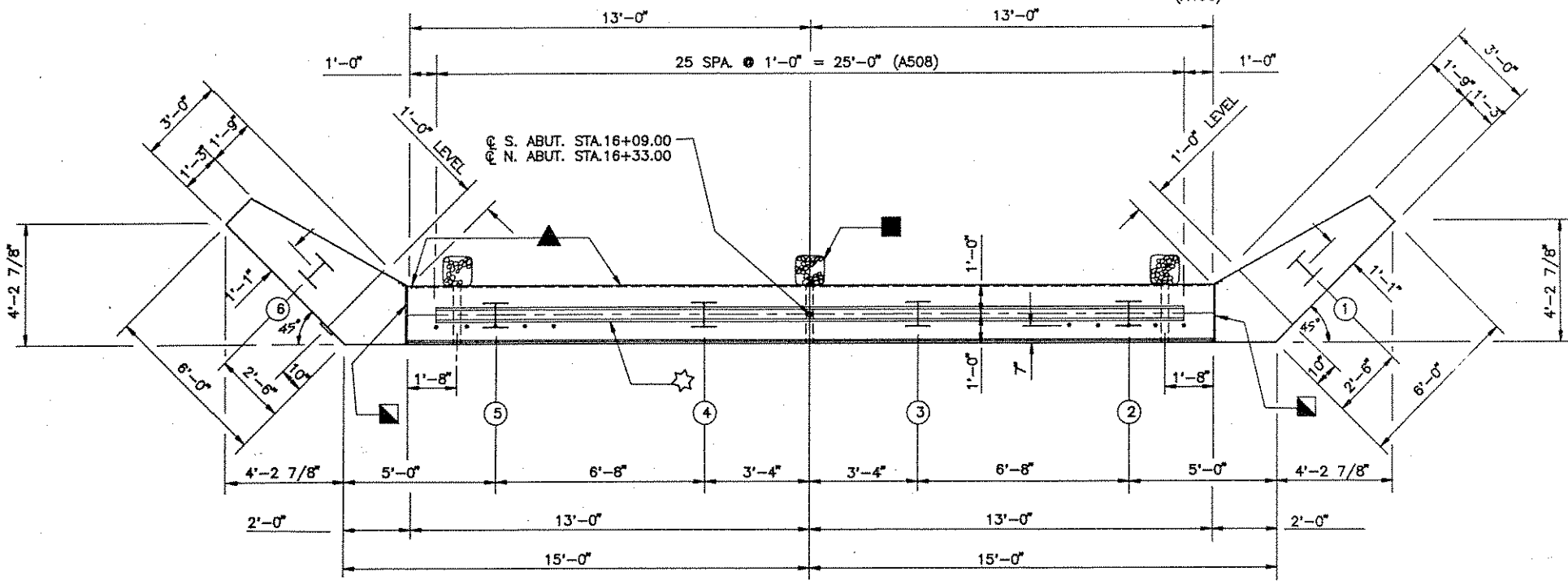


*A508 DOWEL BARS MAY BE PLACED AFTER CONCRETE IS POURED, BUT BEFORE INITIAL SET HAS TAKEN PLACE.



- 2" DIA. WEEP HOLE @ LOCATIONS SHOWN. USE FILTER CLOTH W/ SELECT GRANULAR MATERIAL @ EA. HOLE (ON B.F. 12"x12"x12" MIN.) COST TO BE INCIDENTAL TO "CONCRETE MASONRY BRIDGES."
- POLYVINYL CHLORIDE WATERSTOP TO EXTEND FULL WIDTH OF ABUT. SEAT & VERT. FROM SEAT TO TOP OF WINGS. P.C.W. SHALL BE BUTT-SPLICED AT ALL INTERSECTIONS BY USING A HEATED SPLICING IRON. HOLD FLUSH TO CONC.

- CONST. JOINT KEYWAY FORMED WITH A SURFACED, BEVELED 2" x 6".
- SEAL ALL EXPOSED HORIZ. & VERT. SURFACES OF 1/2" FILLER WITH NON-STAINING GRAY NON-BITUMINOUS JOINT SEALER. (1" DEEP & HOLD 1/8" BELOW SURFACE OF CONC.)

| | | | |
|------------------------------|---------|----------|--------------|
| STATE OF WISCONSIN | | | |
| DEPARTMENT OF TRANSPORTATION | | | |
| DIVISION OF HIGHWAYS | | | |
| STRUCTURE B-35-107 | | | |
| Const. Spec. | WIS. 89 | Drawn By | T.R.L. |
| Plans Checked | | | L.M.B. |
| ABUTMENTS | | | SHEET 3 OF 6 |
| | | | X 82701 |