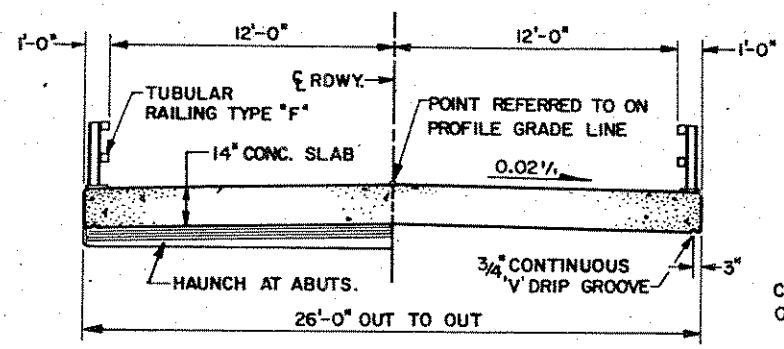


* ANCHOR ASSEMBLY FOR STEEL PLATE BEAM TYPE GUARD RAIL



CROSS SECTION THRU ROADWAY

GENERAL NOTES

DRAWINGS SHALL NOT BE SCALED.
 BAR STEEL REINFORCEMENT SHALL BE EMBEDDED 2" CLEAR UNLESS OTHERWISE NOTED.
 THE SLOPES IN FRONT OF THE ABUTMENTS SHALL BE COVERED WITH HEAVY RIPRAP TO THE EXTENT SHOWN ON THIS SHEET.
 JOINT FILLER SHALL CONFORM TO A.A.S.H.T.O. DESIGNATION M153 TYPE I, II, OR III OR M213.

THIS STRUCTURE WILL REPLACE P-35-938 WHICH IS A SINGLE SPAN CONCRETE SLAB 23.1' LONG x 20.2' WIDE.

DESIGN DATA (CONT.)

HYDRAULIC DATA:

| | |
|--------------------------|-------------|
| DRAINAGE AREA | 8.4 SQ. MI. |
| HIGHWATER ₁₀₀ | EL. 1375.2 |
| Q ₁₀₀ | 800 CFS. |
| WATERWAY AREA | 92 SQ. FT. |
| VELOCITY | 8.7 FPS. |

ROADWAY OVERTOPPING

| | |
|---|-----|
| Q | N/A |
|---|-----|

TRAFFIC DATA

| | |
|---------------|----|
| A.D.T. (1989) | 30 |
|---------------|----|

DESIGN DATA

STRUCTURE IS DESIGNED FOR A FUTURE WEARING SURFACE OF 20 P.S.F.

RATINGS: DESIGN RATING — HS 20
 INVENTORY RATING — HS 21
 OPERATING RATING — HS 35
 MAX. STD. PERMIT VEHICLE LOAD — 180 KIPS

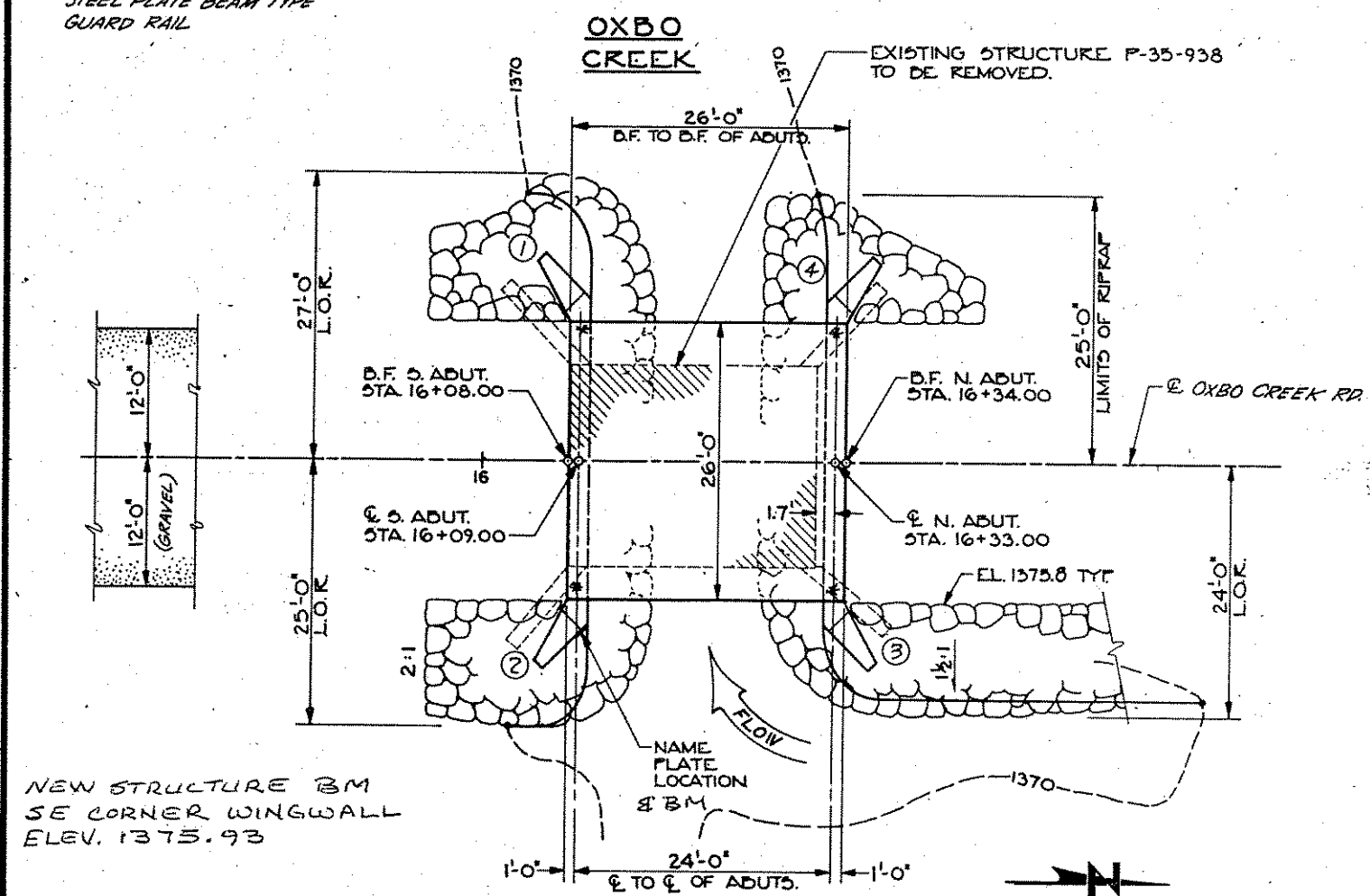
ALLOWABLE DESIGN STRESSES:

| | |
|--|--------------------------------|
| CONCRETE MASONRY — SLAB | f _c = 4,000 P.S.I. |
| — OTHER | f _c = 3,500 P.S.I. |
| HIGH STRENGTH BAR STEEL REINFORCEMENT — GRADE 60 | f _y = 60,000 P.S.I. |

FOUNDATION DATA: ABUTMENTS TO BE SUPPORTED ON HP 10 x 42 STEEL "H" PILES EST. 25'-0" LG. & DRIVEN TO A MIN. BEARING VALUE OF 30 TONS / PILE.

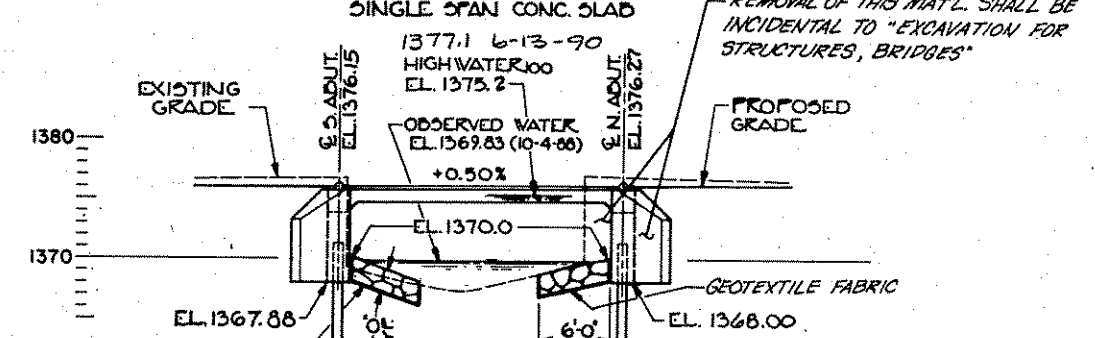
TOTAL ESTIMATED QUANTITIES

| BID ITEMS | UNIT | S. ABUT. | N. ABUT. | SUPER | TOTAL |
|---|------|----------|----------|-------|-------------|
| REMOVING OLD STRUCTURE STA. 16+21 | L.S. | - | - | - | 1 |
| EXCAVATION FOR STRUCTURES, BRIDGES | L.S. | - | - | - | 1 |
| CONCRETE MASONRY, BRIDGES | C.Y. | 20.0 | 20.0 | 32.0 | 72.0 |
| HIGH STRENGTH BAR STEEL REINFORCEMENT, BRIDGES | LBS. | 1,570 | 1,570 | 4,370 | 7,510 |
| COATED HIGH STRENGTH BAR STEEL REINFORCEMENT, BRIDGES | LBS. | - | - | 1,275 | 1,275 |
| HEAVY RIPRAP | C.Y. | 45 | 70 | - | 115 |
| PROTECTIVE SURFACE TREATMENT | GAL. | - | - | 3.0 | 3.0 |
| GEOTEXTILE FABRIC, TYPE HR | S.Y. | 67 | 101 | - | 168 |
| STEEL PILING, DELIVERED & DRIVEN, HP 10 x 42 | L.F. | 150 | 150 | - | 300 |
| TUBULAR RAILING TYPE "F" B-35-107 | L.S. | - | - | - | 1 |
| NON-BID ITEMS | | | | | |
| FILLER | SIZE | - | - | - | 1/2" & 3/4" |
| POLYVINYL CHLORIDE WATERSTOP | L.F. | 30 | 30 | - | 60 |



NEW STRUCTURE BM SE CORNER WINGWALL ELEV. 1375.93

PLAN



ELEVATION

LIST OF DRAWINGS

- GENERAL PLAN
- SUBSURFACE EXPLORATION
- ABUTMENTS
- WINGS
- SUPERSTRUCTURE
- TUBULAR RAILING TYPE "F"

BENCH MARK LOCATION

| NO. | STA. | LOCATION | ELEV. |
|-----|-------|--|---------|
| 1 | 12+50 | R.R. SPIKE IN 12" POPLAR - N. SIDE 44' L | 1378.79 |
| 2 | 16+31 | CHISELED "D" N.E. CORNER BRIDGE 9' R | 1377.26 |
| 3 | 19+80 | R.R. SPIKE IN 10" POPLAR - S.E. SIDE 31' L | 1381.72 |

DOT MON. SE WINGWALL - NEW STRUC. 1375.93



PLANS PREPARED BY:
 BARRIENTOS & ASSOCIATES, INC.
 CONSULTING ENGINEERS
 3822 MINERAL PT. RD. - MADISON, WI. 53705
 PH. 608-238-6781

BRIDGE OFFICE CONTACT:
 (608) 266-8486, DAVE BABLER

| No. | Date | Revision | By |
|--|-----------------------|-------------------------------|-----------------------|
| STATE OF WISCONSIN DEPARTMENT OF TRANSPORTATION DIVISION OF HIGHWAYS | | | |
| STRUCTURE B-35-107 OXBO CREEK BRIDGE | | | |
| County LINCOLN | Town PINE RIVER | Design Spec. A.A.S.H.T.O. '88 | Load HS 20 |
| Designed By L.M.B. | Design Checked J.T.T. | Drawn By D.R.L. | Const. Spec. WIS. '89 |
| Approved <i>[Signature]</i> State Bridge Engineer | | Checked L.M.B. | |
| Date 11-6-87 | | SHEET 1 of 6 | |
| GENERAL PLAN | | X 82701 | |