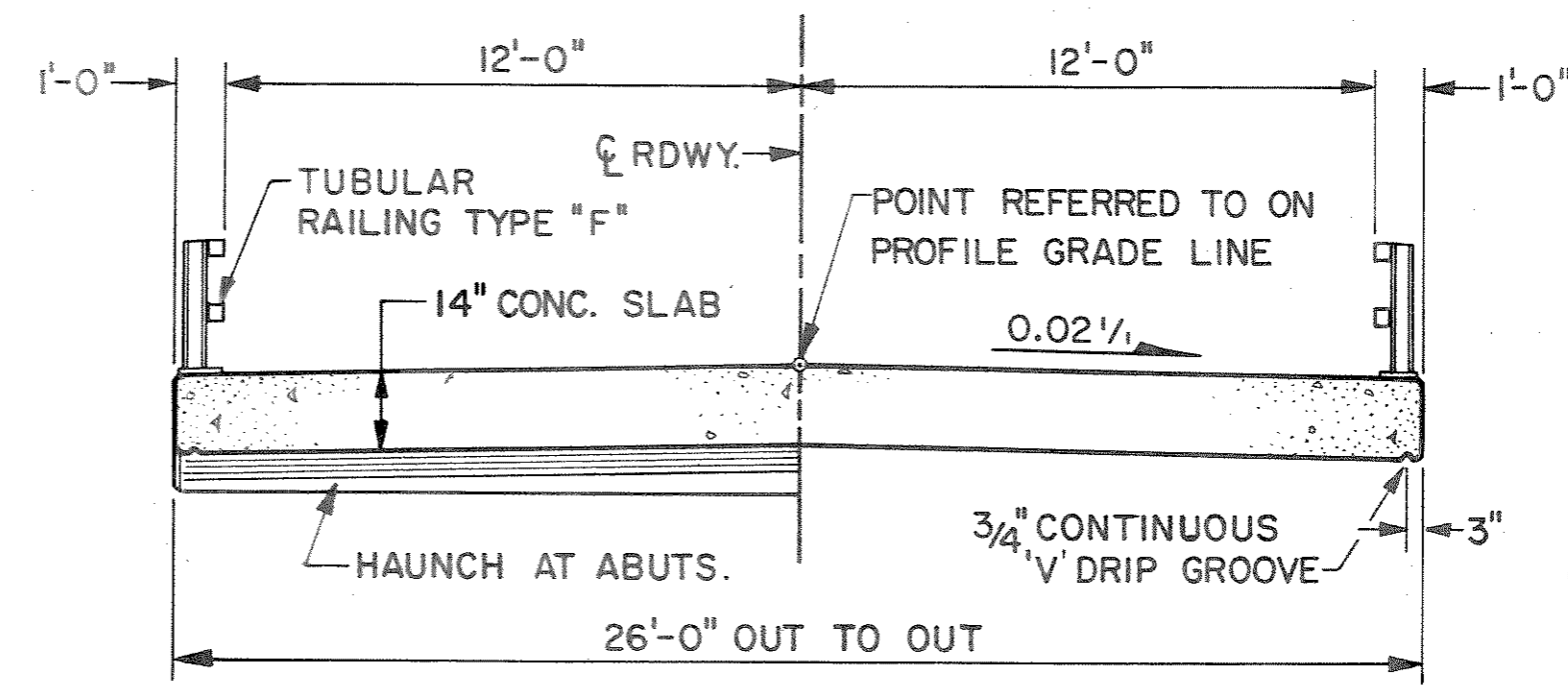
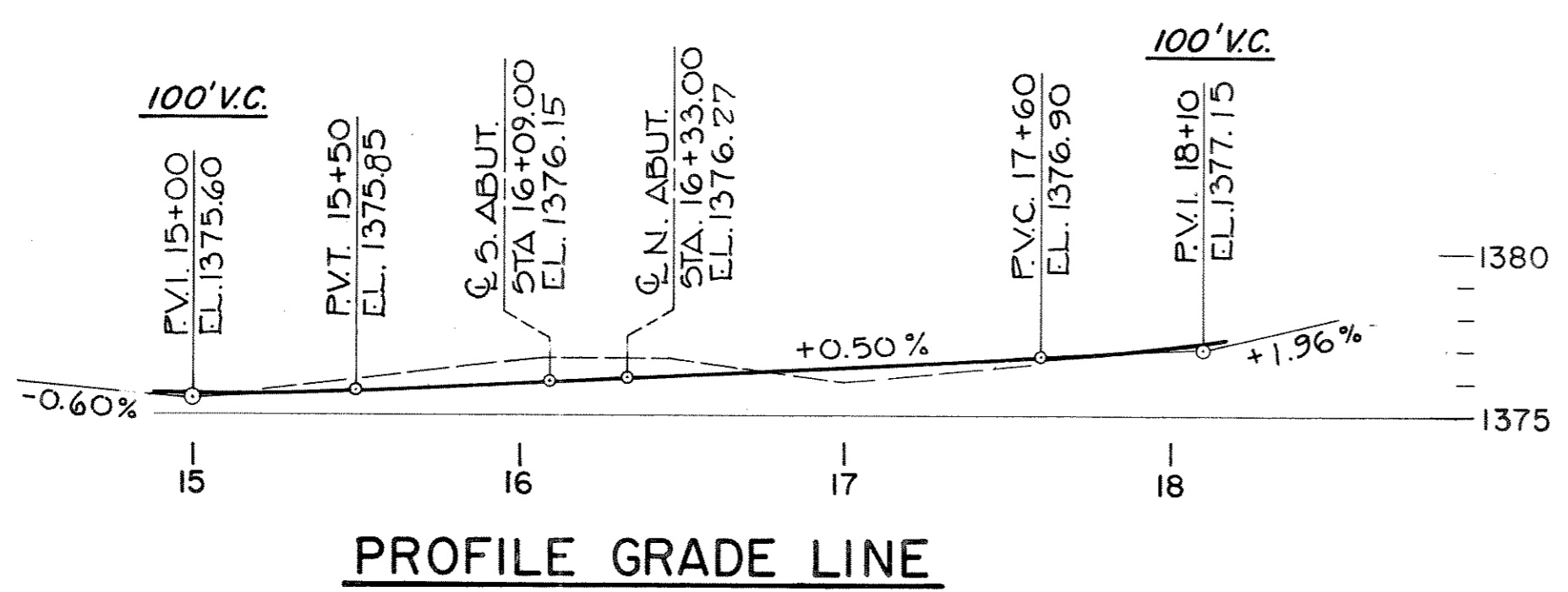
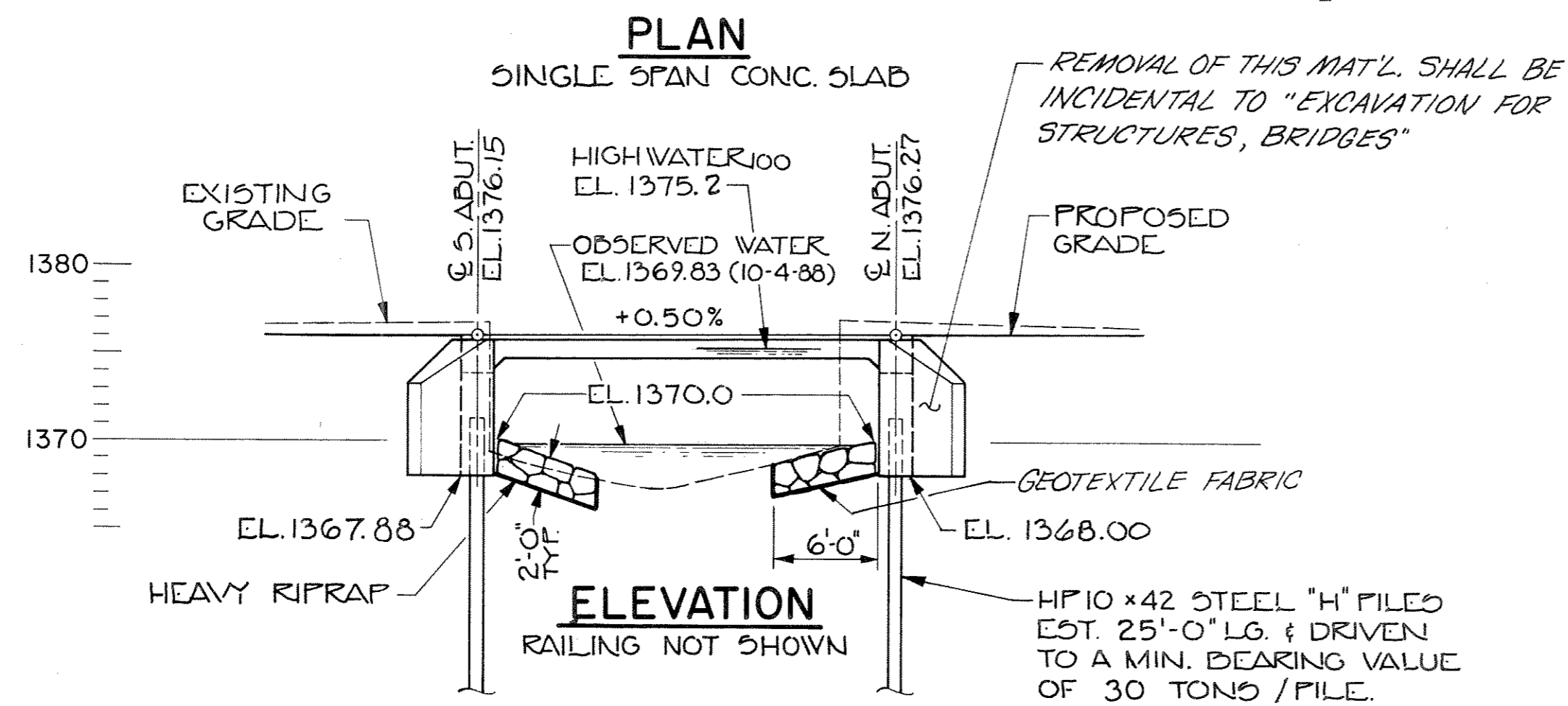
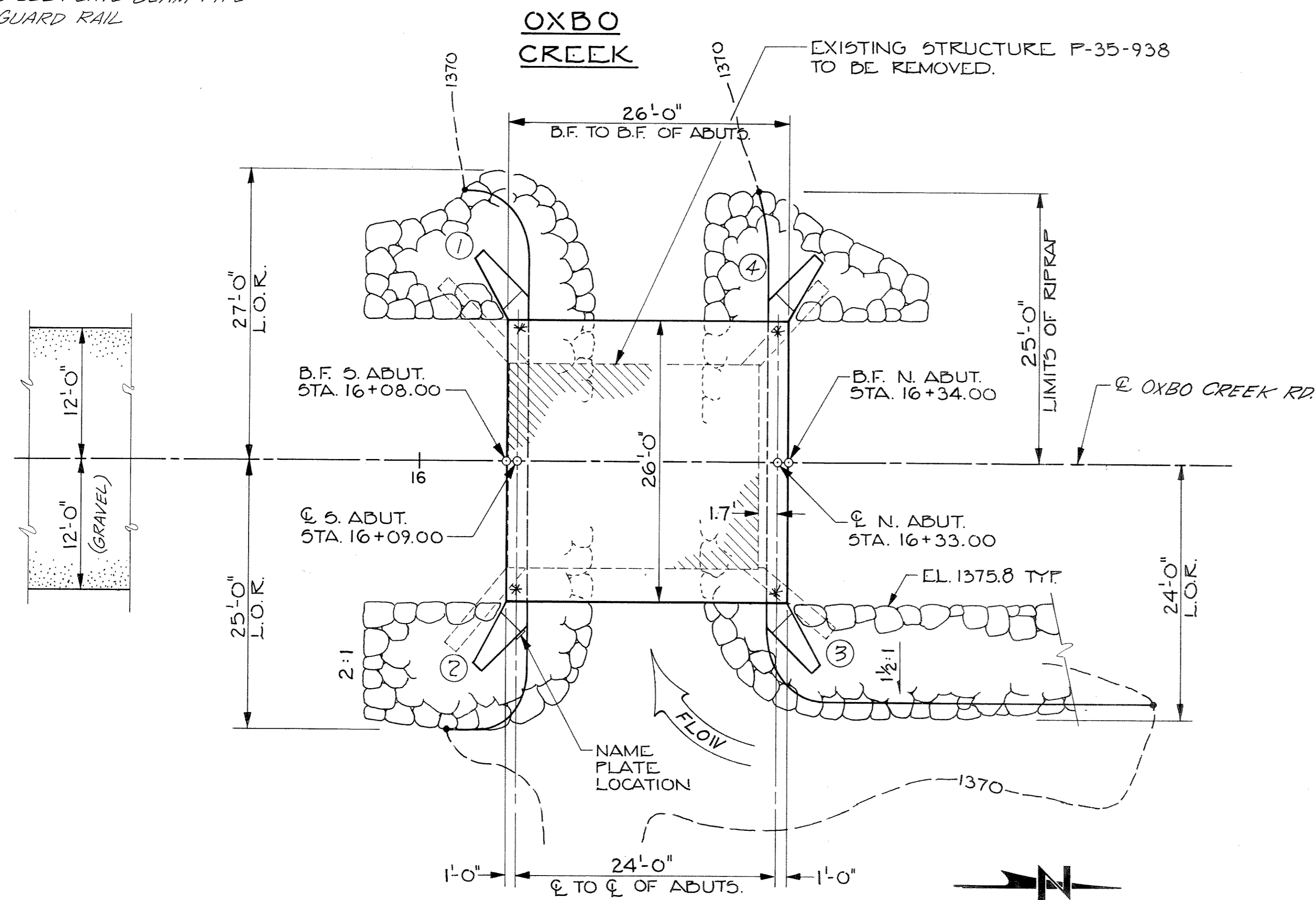


* ANCHOR ASSEMBLY FOR STEEL PLATE BEAM TYPE GUARD RAIL



CROSS SECTION THRU ROADWAY

DESIGN DATA (CONT.)

HYDRAULIC DATA:

DRAINAGE AREA	8.4 SQ. MI.
HIGHWATER ₁₀₀	EL. 1375.2
Q ₁₀₀	800 CFS.
WATERWAY AREA	92 SQ. FT.
VELOCITY	8.7 FPS.

ROADWAY OVERTOPPING

Q	N/A
---	-----

TRAFFIC DATA

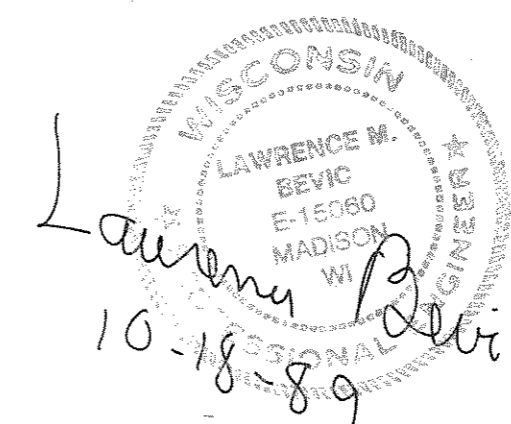
A.D.T. (1989) 30

TOTAL ESTIMATED QUANTITIES

BID ITEMS	UNIT	S. ABUT.	N. ABUT.	SUPER	TOTAL
REMOVING OLD STRUCTURE STA. 16+21	L.S.	-	-	-	1
EXCAVATION FOR STRUCTURES, BRIDGES	L.S.	-	-	-	1
CONCRETE MASONRY, BRIDGES	C.Y.	20.0	20.0	32.0	72.0
HIGH STRENGTH BAR STEEL REINFORCEMENT, BRIDGES	LBS.	1,570	1,570	4,370	7,510
COATED HIGH STRENGTH BAR STEEL REINFORCEMENT, BRIDGES	LBS.	-	-	1,275	1,275
HEAVY RIPRAP	C.Y.	45	70	-	115
PROTECTIVE SURFACE TREATMENT	GAL.	-	-	3.0	3.0
GEOTEXTILE FABRIC, TYPE HR	S.Y.	67	101	-	168
STEEL PILING, DELIVERED & DRIVEN, HP 10x42	L.F.	150	150	-	300
TUBULAR RAILING TYPE "F" B-35-107	L.S.	-	-	-	1
NON-BID ITEMS					
FILLER	SIZE	-	-	-	1/2" & 3/4"
POLYVINYL CHLORIDE WATERSTOP	L.F.	30	30	-	60

LIST OF DRAWINGS

- GENERAL PLAN
- SUBSURFACE EXPLORATION
- ABUTMENTS
- WINGS
- SUPERSTRUCTURE
- TUBULAR RAILING TYPE "F"



PLANS PREPARED BY:
BARRIENTOS & ASSOCIATES, INC.
CONSULTING ENGINEERS
3822 MINERAL PT. RD. - MADISON, WI. 53705
PH. 608-238-6761

BENCH MARK LOCATION

NO.	STA.	LOCATION	ELEV.
1	12+50	R.R. SPIKE IN 12" POPLAR - N. SIDE	44' L 1378.79
2	16+31	CHISELED "D" N.E. CORNER BRIDGE	9' R 1377.26
3	19+88	R.R. SPIKE IN 10" POPLAR - S.E. SIDE	31' L 1381.72

BRIDGE OFFICE CONTACT:
(608) 266-8486, DAVE BABLER

STATE PROJECT NUMBER	SHEET NO.
9857-03-70	

GENERAL NOTES

DRAWINGS SHALL NOT BE SCALED.
BAR STEEL REINFORCEMENT SHALL BE EMBEDDED 2" CLEAR UNLESS OTHERWISE NOTED.
THE SLOPES IN FRONT OF THE ABUTMENTS SHALL BE COVERED WITH HEAVY RIPRAP TO THE EXTENT SHOWN ON THIS SHEET.
JOINT FILLER SHALL CONFORM TO A.A.S.H.T.O. DESIGNATION M153 TYPE I, II, OR III OR M213.
THIS STRUCTURE WILL REPLACE P-35-938 WHICH IS A SINGLE SPAN CONCRETE SLAB 23.1' LONG X 20.2' WIDE.

DESIGN DATA

STRUCTURE IS DESIGNED FOR A FUTURE WEARING SURFACE OF 20 P.S.F.
RATINGS: DESIGN RATING HS 20
INVENTORY RATING HS 21
OPERATING RATING HS 35
MAX. STD. PERMIT VEHICLE LOAD - 167 KIPS
ALLOWABLE DESIGN STRESSES:
CONCRETE MASONRY - SLAB $f_c = 4,000$ P.S.I.
- OTHER $f_c = 3,500$ P.S.I.
HIGH STRENGTH BAR STEEL REINFORCEMENT - GRADE 60 $f_y = 60,000$ P.S.I.

FOUNDATION DATA: ABUTMENTS TO BE SUPPORTED ON HP 10x42 STEEL "H" PILES EST. 25'-0" LG. & DRIVEN TO A MIN. BEARING VALUE OF 30 TONS / PILE.

No.	Date	Revision	By
STATE OF WISCONSIN DEPARTMENT OF TRANSPORTATION DIVISION OF HIGHWAYS			
STRUCTURE B-35-107 OXBO CREEK BRIDGE			
County	LINCOLN	Town	PINE RIVER
Design Spec.	A.A.S.H.T.O. '88	Load	HS 20 Const. Spec. WIS. '89
Designed By	L.M.B.	Design Checked	J.T.T.
Drawn By	S.R.L.	Plans Checked	L.M.B.
Approved	State Bridge Engineer		Date
GENERAL PLAN			SHEET 1 OF 6 X 82701