

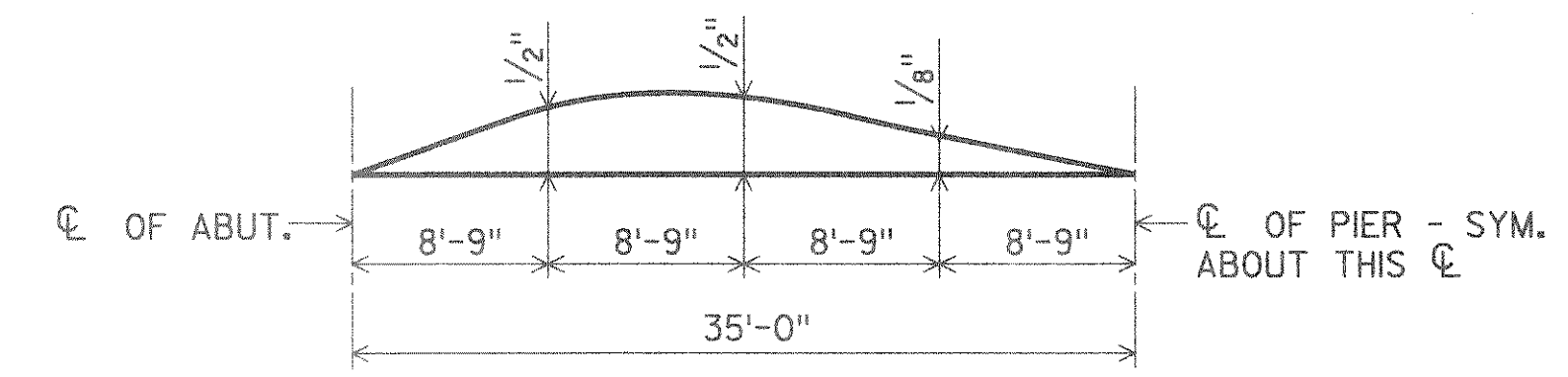
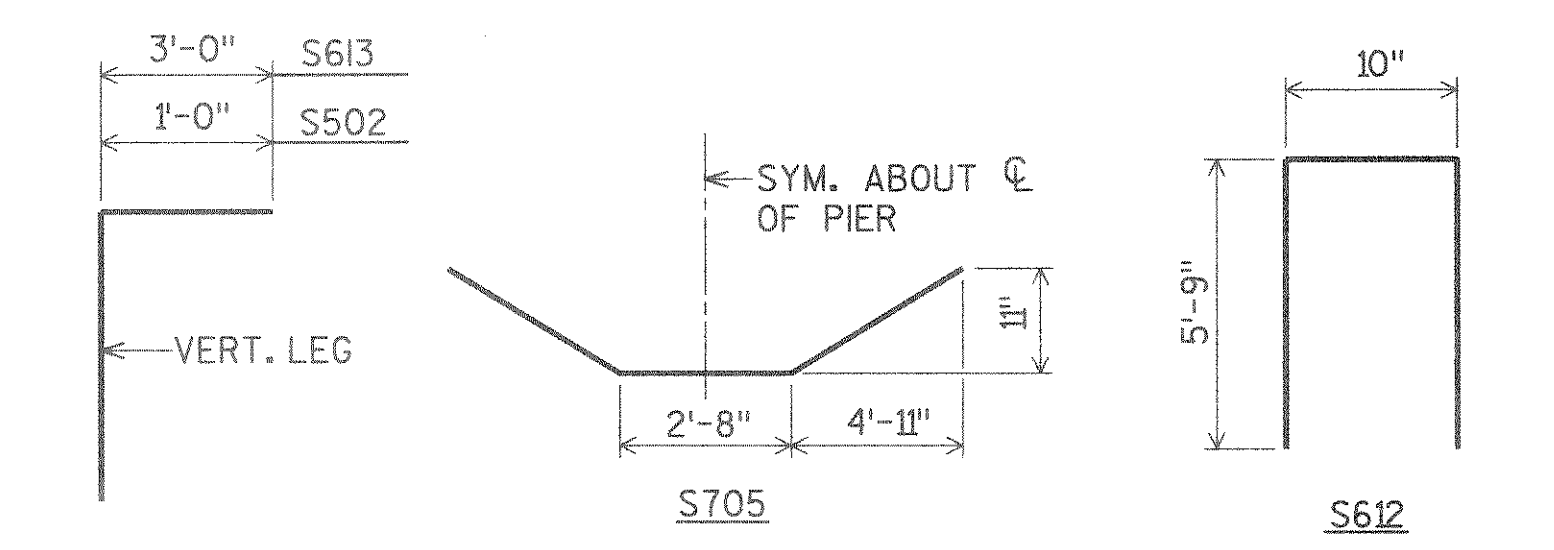
ALTERNATE TOP TRANSVERSE BARS IN SLAB SHALL BE SUPPORTED BY INDIVIDUAL BAR CHAIRS AT APPROXIMATELY 3'-0" CENTERS. BOTTOM LONGITUDINAL BARS SHALL BE SUPPORTED BY CONTINUOUS BAR CHAIRS AT APPROXIMATELY 4'-0" CENTERS.

ALL SLAB THICKNESS DIMENSIONS ARE MINIMUM. ANY TOLERANCES NECESSARY TO CORRECT CONSTRUCTION DISCREPANCIES ARE TO BE PLUS (+).

BILL OF BARS

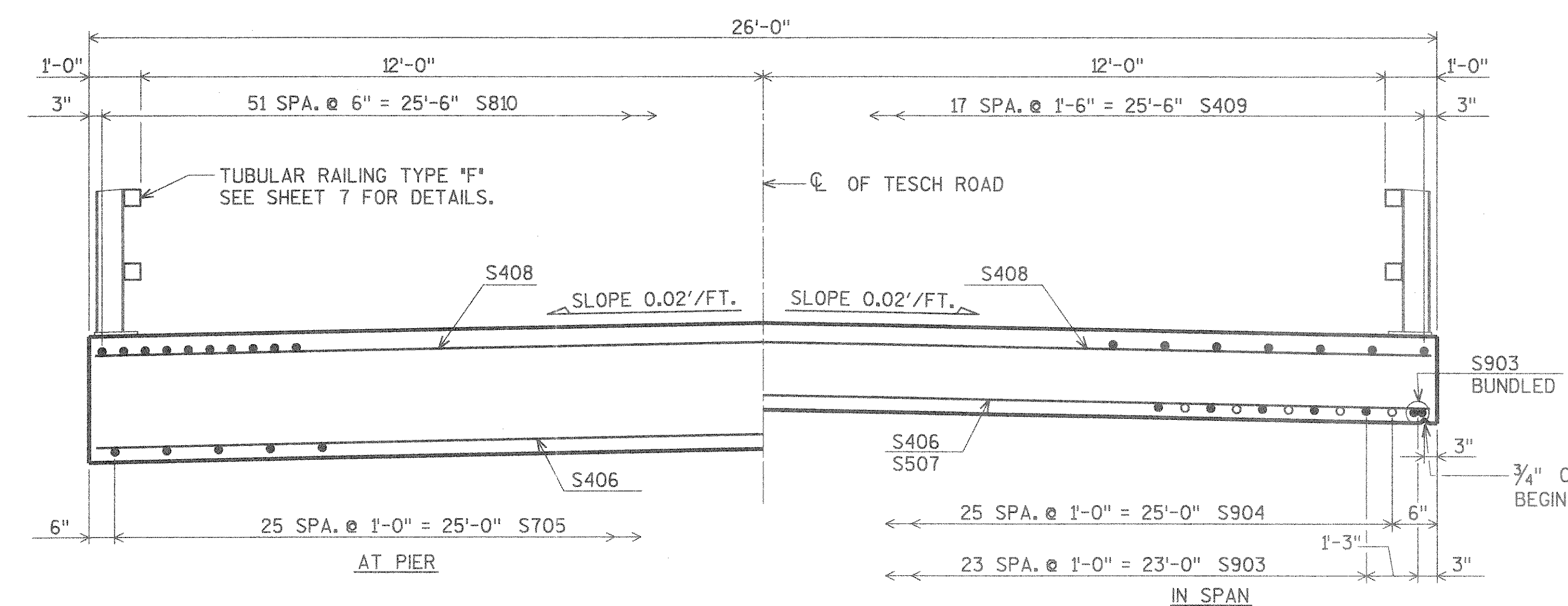
| BAR. NO. | NO. REQ'D. | LENGTH | BENT BAR | COATED BAR | CUT. DIAGR. | 6,900# COATED 13,440# UNCOATED |
|----------|------------|--------|----------|------------|-------------|-----------------------------------|
| | | | | | | LOCATION |
| S501 | 52 | 5-3 | X | | | SLAB @ ABUT. |
| S502 | 52 | 2-6 | X | X | | SLAB @ ABUT. |
| S903 | 56 | 32-4 | | | | SLAB LONG. BOT. IN SPAN |
| S904 | 52 | 26-0 | | | | SLAB LONG. BOT. IN SPAN |
| S705 | 26 | 12-6 | X | | | SLAB LONG. BOT. @ PIER |
| S406 | 42 | 25-8 | | | | SLAB TRANS. BOT. |
| S507 | 38 | 25-8 | | | | SLAB TRANS. BOT. |
| S408 | 73 | 25-8 | X | | | SLAB TRANS. TOP |
| S409 | 36 | 16-1 | X | | | SLAB LONG. TOP IN SPAN |
| S810 | 52 | 32-7 | X | | | SLAB LONG. TOP @ PIER |
| S611 | 32 | 4-0 | X | | | SLAB @ INT. RAIL POSTS |
| S612 | 20 | 12-0 | X | X | | SLAB @ RAIL POSTS |
| S613 | 8 | 4-0 | X | X | | SLAB @ EXT. RAIL POSTS |

BENDING DIMENSIONS ARE OUT TO OUT OF BARS.

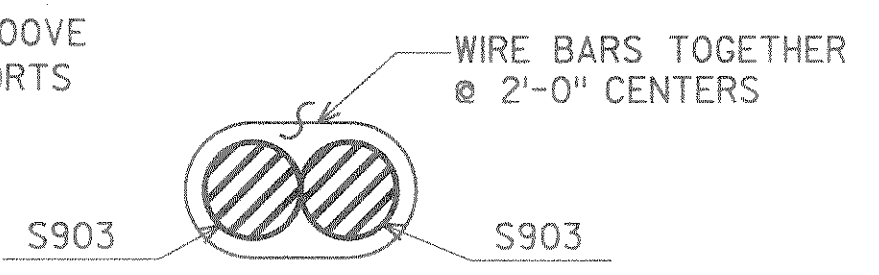


CAMBER DIAGRAM

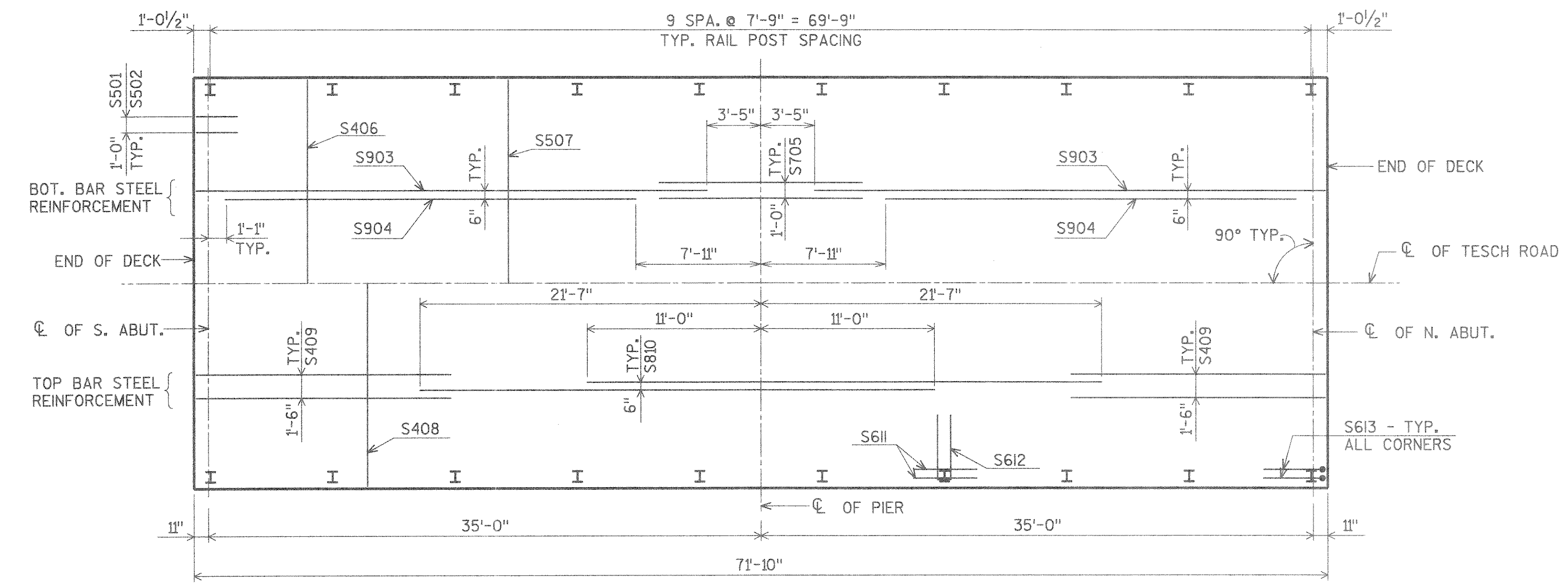
CAMBER SPANS AS SHOWN TO PROVIDE FOR DEADLOAD DEFLECTION & FUTURE PLASTIC FLOW. CAMBER DOES NOT INCLUDE ALLOWANCE FOR FORM SETTLEMENT.



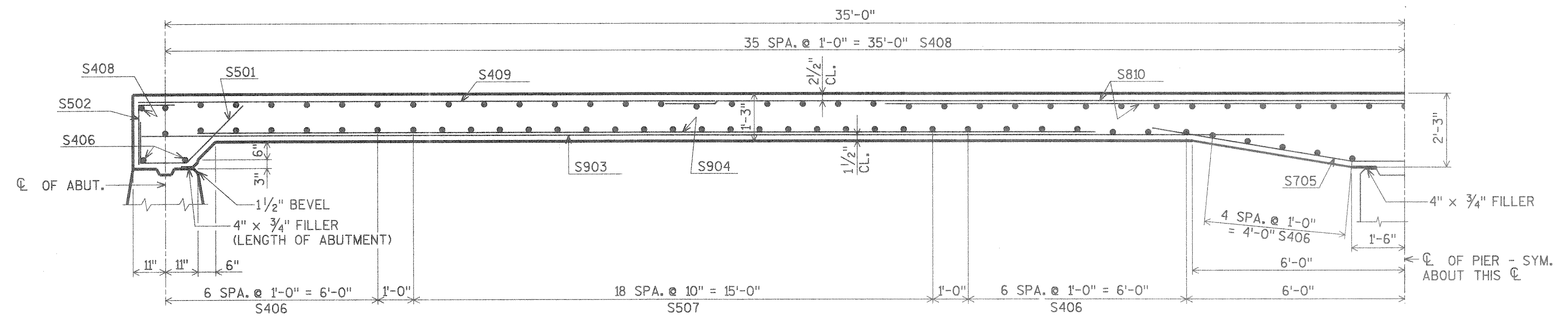
CROSS SECTION THRU ROADWAY



BUNDLING DETAIL



PLAN



PART LONGITUDINAL SECTION

PEN TABLE = collgbr.tbl
DATE OF PLOT = 01/21/94
DESIGN FILE IS /usr/work/ttbrldge/5020sup.dgn
DGN LEVELS ON = 1-63

REFERENCE FILES
REF NC REFLNC
REF NB REFLNB
REF NA REFLNA

CHECKED BY:
BACK CHECKED BY:
CORRECTED BY:

| | | | |
|--|------|---------------|--------------|
| No. | Date | Revision | By |
| PLANS PREPARED BY | | | |
| AYRES Engineers/Architects Planners/Surveyors Owen Ayres & Associates Inc. Eau Claire, Wisconsin | | | |
| STATE OF WISCONSIN DEPARTMENT OF TRANSPORTATION | | | |
| STRUCTURE B-35-I25 | | | |
| Const. Spec. | 1989 | Drawn By | CLS |
| | | Plans Checked | C.B.M. |
| SUPERSTRUCTURE | | | SHEET 6 OF 7 |