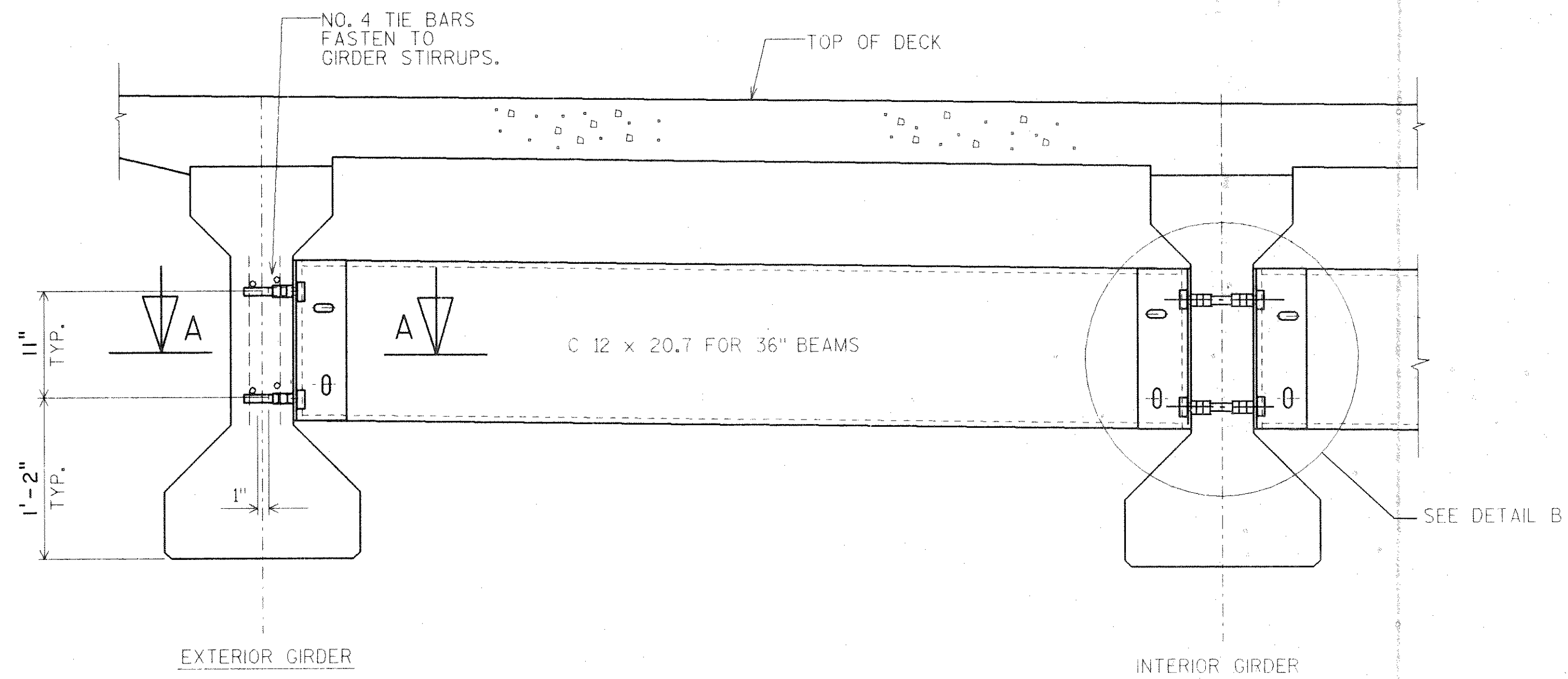


NOTES

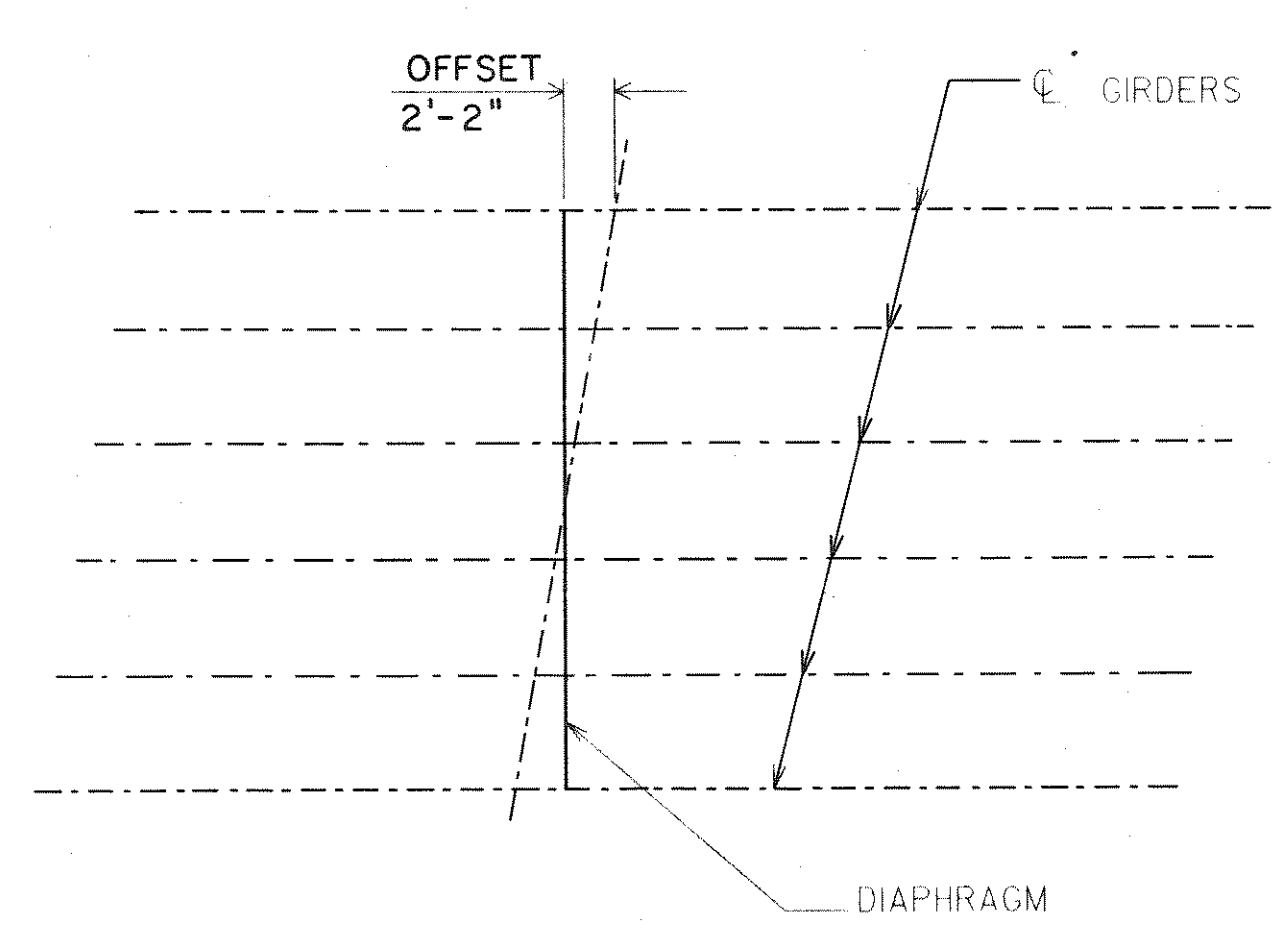
STEEL DIAPHRAGMS MAY BE USED IN LIEU OF CAST-IN-PLACE CONCRETE DIAPHRAGMS. NO ADDITIONAL PAYMENT WILL BE MADE IF STEEL DIAPHRAGMS ARE USED.

ALL DIAPHRAGM STRUCTURAL STEEL SHALL BE ASTM A36. ALL BOLTS, NUTS AND WASHERS SHALL BE ASTM A325 TYPE 1.

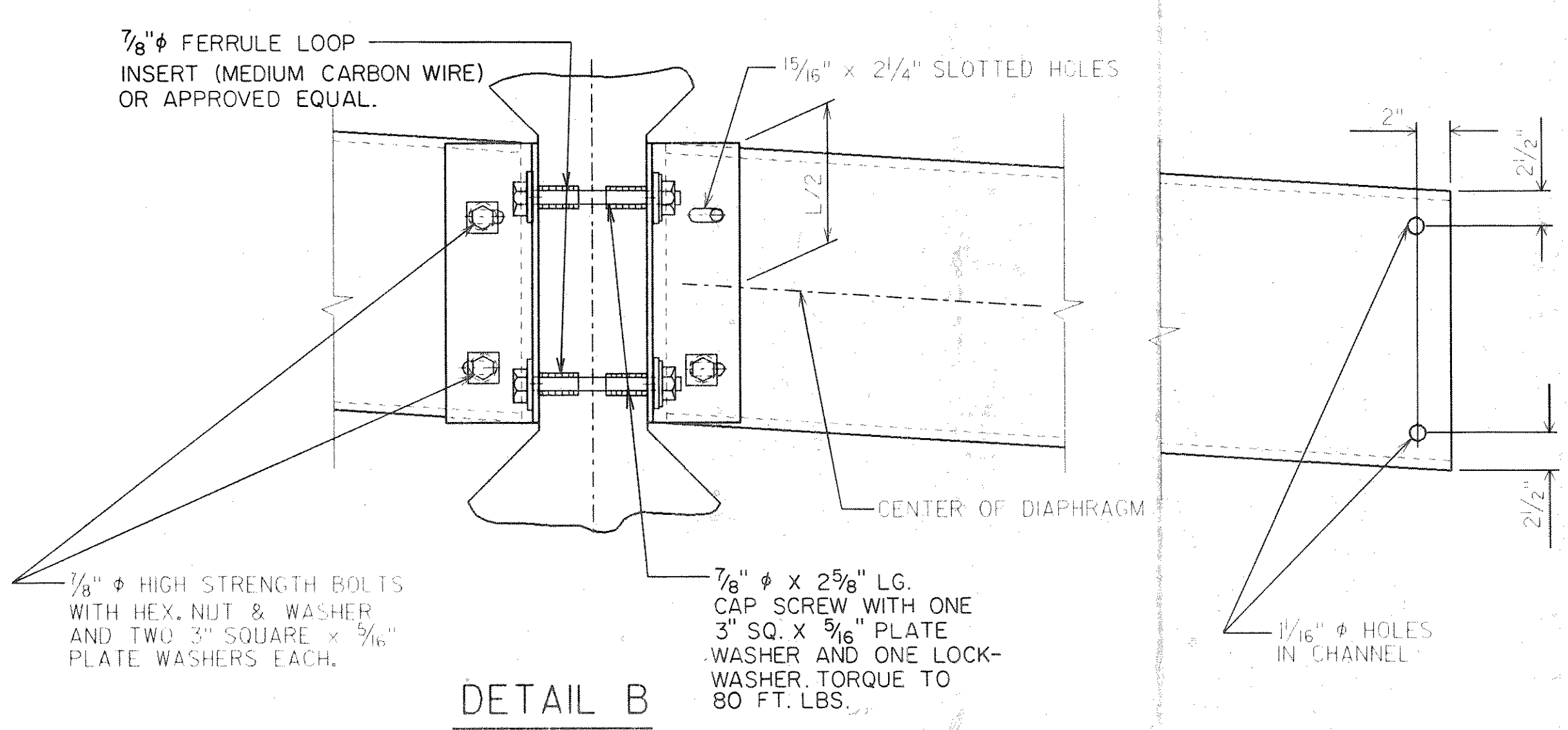
ALL DIAPHRAGM STRUCTURAL STEEL SHOWN SHALL BE HOT-DIPPED GALVANIZED. ALL BOLTS, NUTS, SLEEVES AND WASHERS SHALL BE HOT-DIPPED GALVANIZED IN ACCORDANCE WITH ASTM A153 CLASS C. GALVANIZED NUTS SHALL BE TAPPED OVERSIZE IN ACCORDANCE WITH THE REQUIREMENTS OF ASTM A563 AND SHALL MEET THE REQUIREMENTS OF SUPPLEMENTARY REQUIREMENT S1 OF ASTM A563, LUBRICANT AND TEST FOR COATED NUTS.



PART TRANSVERSE SECTION AT DIAPHRAGM

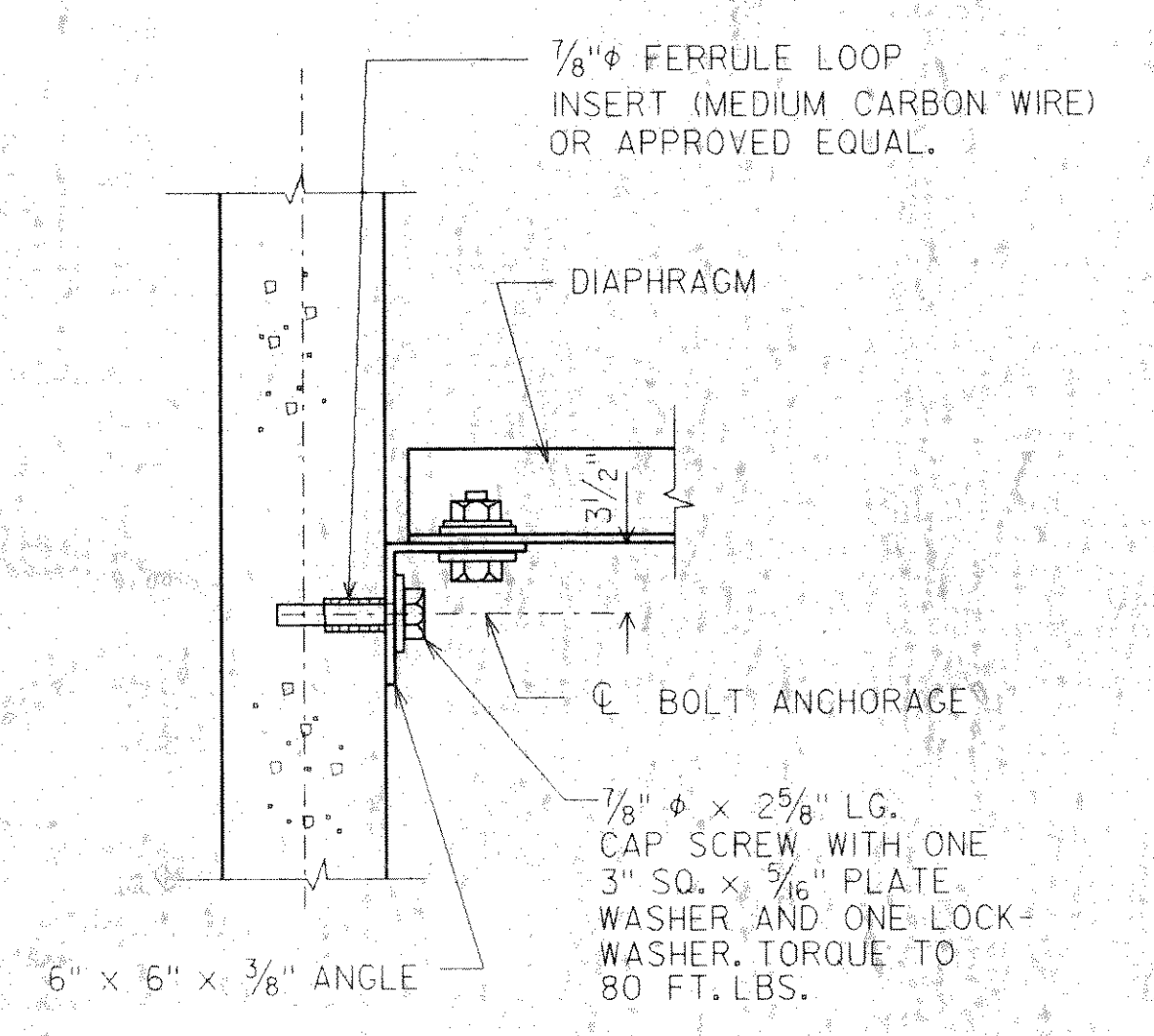


PLAN FOR SKEW ANGLES $\leq 10^\circ$



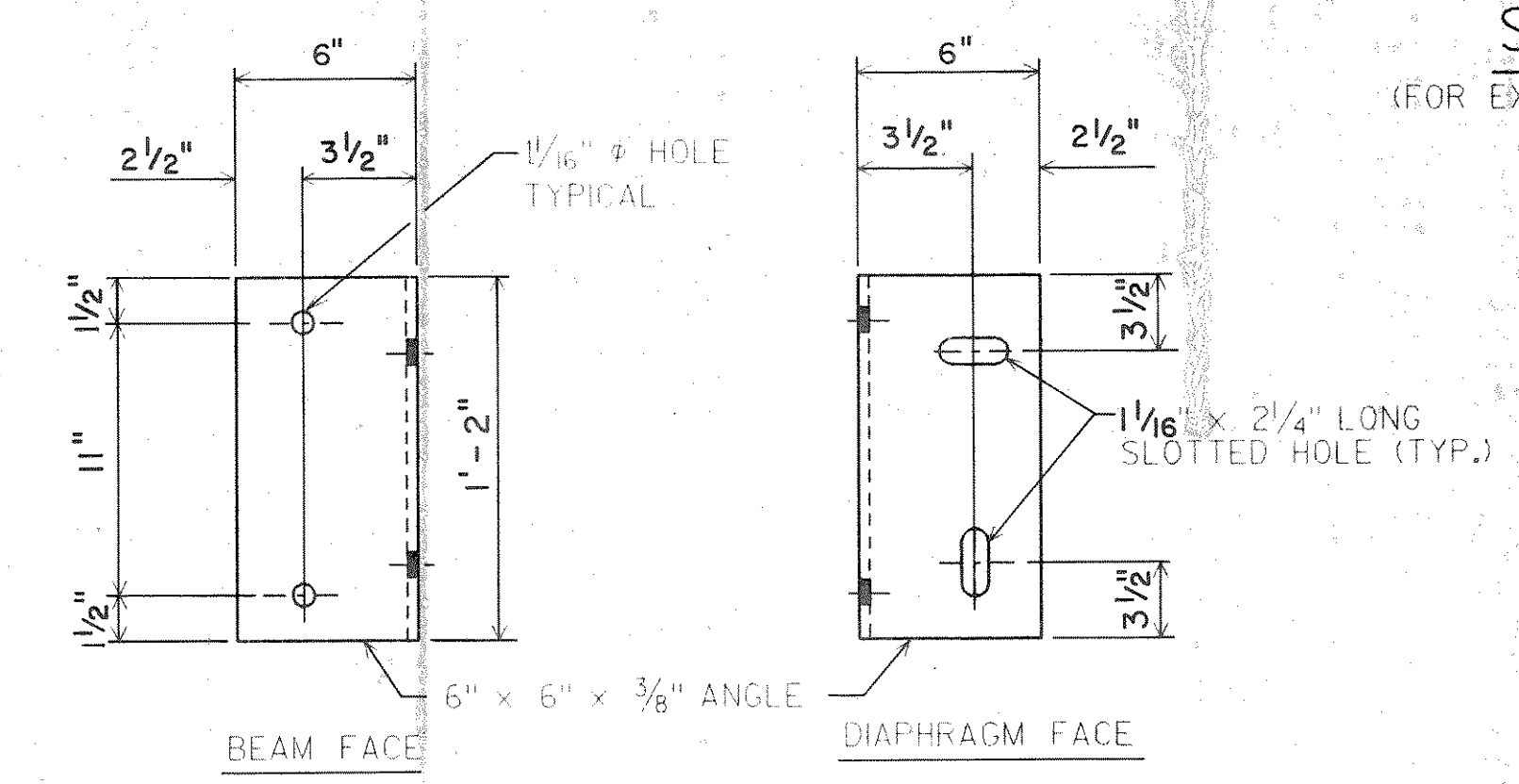
DETAIL B

(FOR CONTINUOUS LINE OF DIAPHRAGMS)



SECT. A-A

(FOR EXTERIOR ATTACHMENT)



DIAPHRAGM SUPPORT

NO.	DATE	REVISION	BY
STATE OF WISCONSIN DEPARTMENT OF TRANSPORTATION DIVISION OF HIGHWAYS			
STRUCTURE B-35-112			
CONST. SPEC.	1989	DRAWN BY OMNI	PLANS CK'D. JWT
STEEL DIAPHRAGM ALTERNATE			SHEET 8 OF 9
			X83349