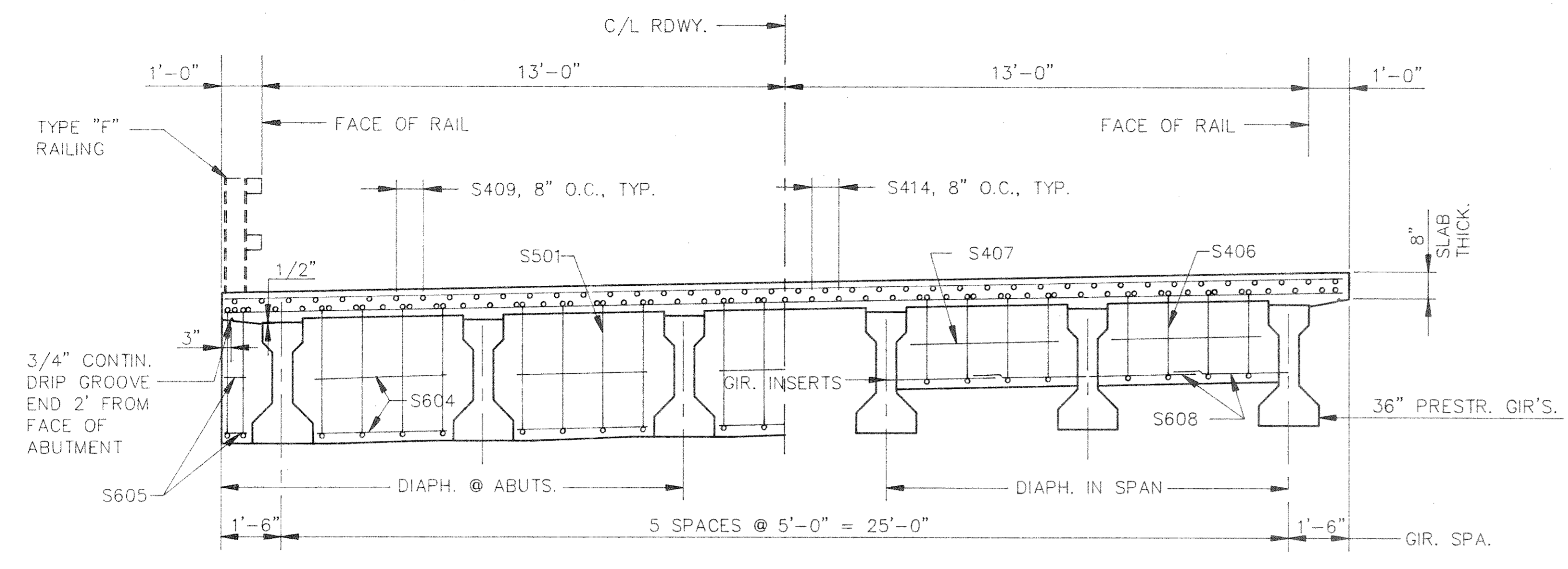
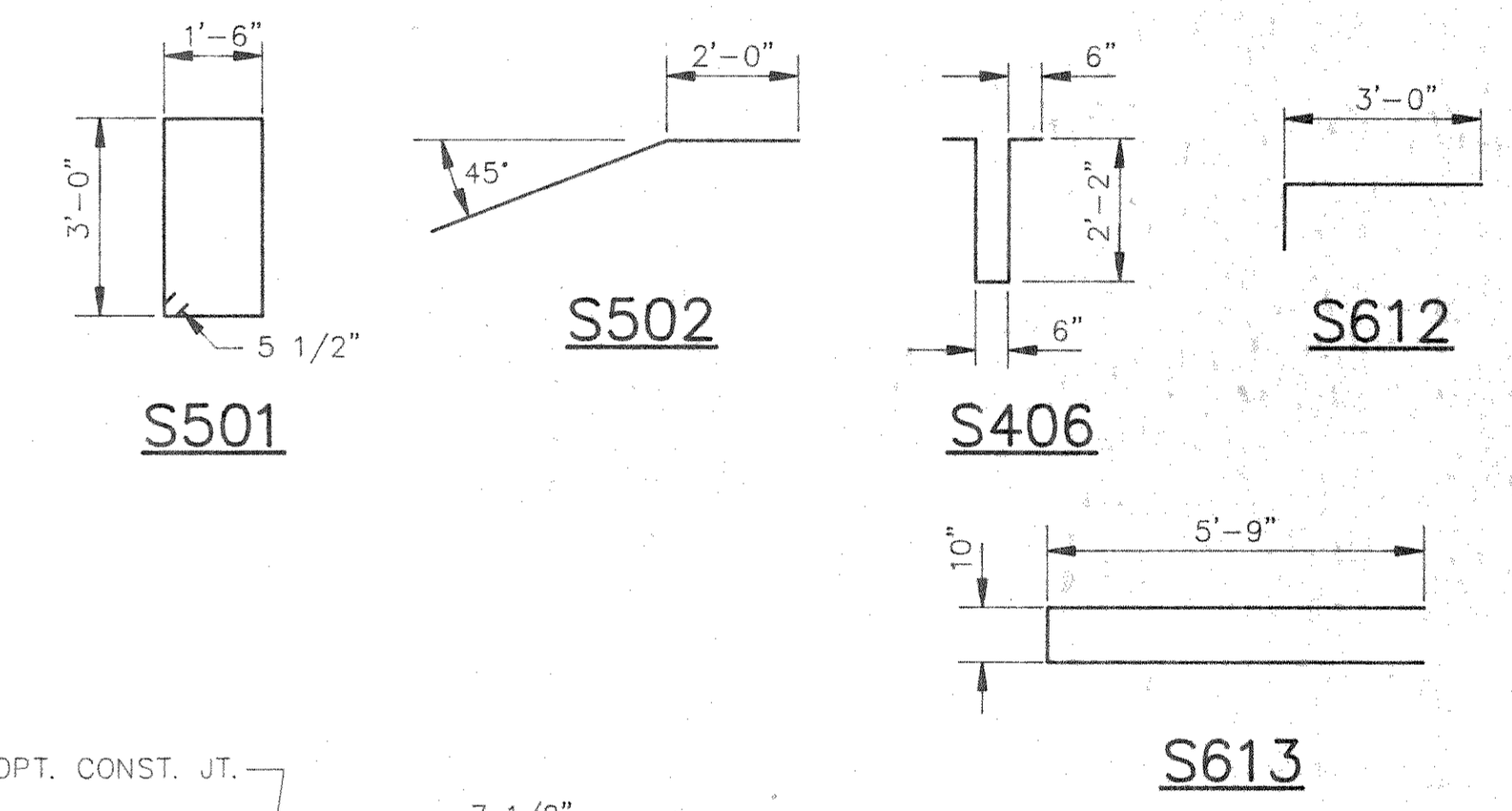


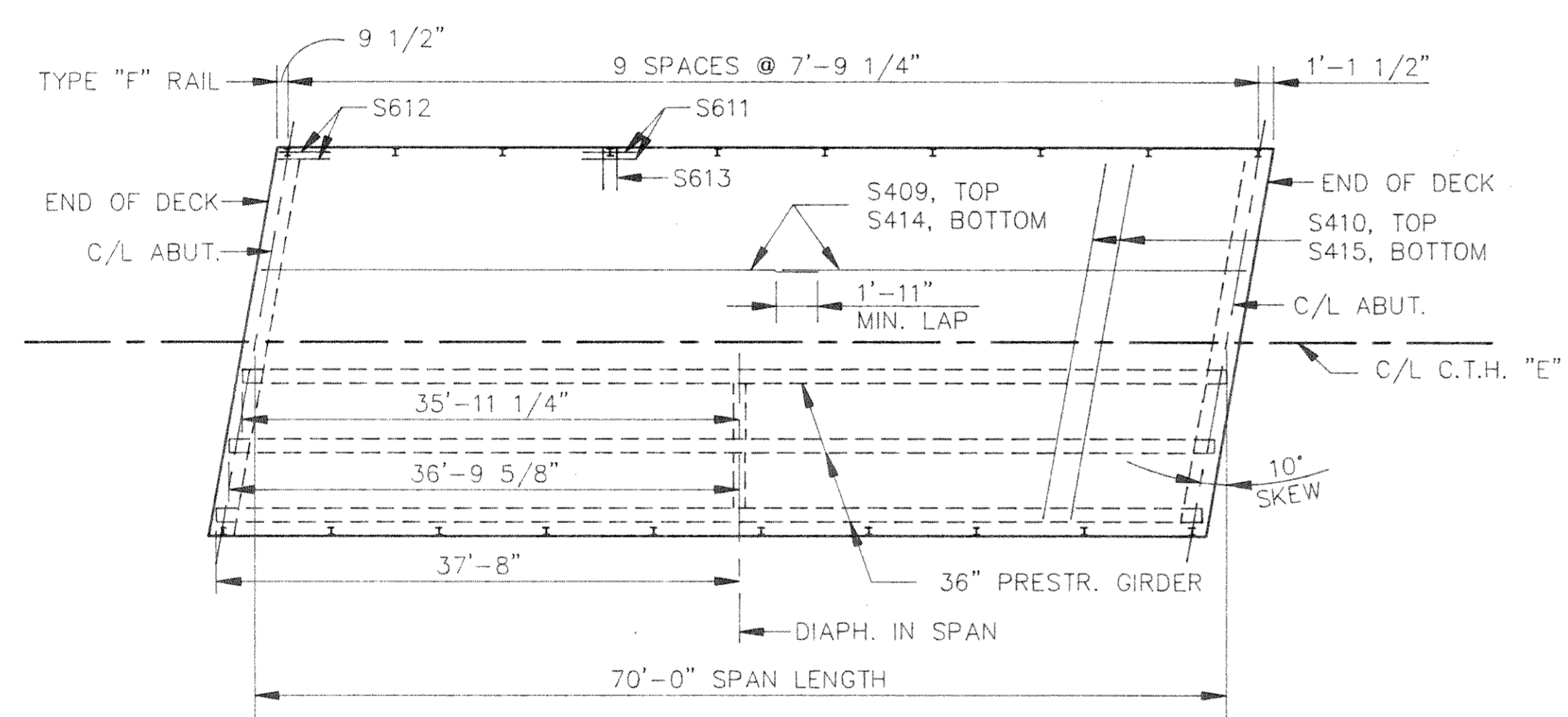
BILL OF BARS

BAR MARK	COAT	NO.	REQ'D.	LENGTH	BENT	CUT. DIAG.	LOCATION
S501	X	48	9-7		X		DIAPHRAGM @ ABUTMENTS
S502	X	44	4-0		X		DIAPHRAGM @ ABUTMENTS
S603	X	8	28-1				DIAPHRAGM @ ABUTMENTS
S604	X	20	3-2				DIAPHRAGM @ ABUTMENTS
S605	X	8	0-5				DIAPHRAGM @ ABUTMENTS
S406		20	5-6	X			DIAPHRAGM IN SPAN
S407		10	4-0				DIAPHRAGM IN SPAN
S608		20	3-9				DIA. IN SPAN, THRD ONE END 3"
S409		84	36-9				SLAB - TOP LONGITUDINAL
S410		123	28-1				SLAB - TOP TRANSVERSE
S611		32	4-0				AT INTERIOR RAIL POSTS
S612		8	4-0	X			AT END RAIL POSTS
S613		16	12-0	X			AT RAIL POSTS
S414		86	36-9				SLAB - BOTTOM LONGITUDINAL
S415		117	28-1				SLAB - BOTTOM TRANSVERSE

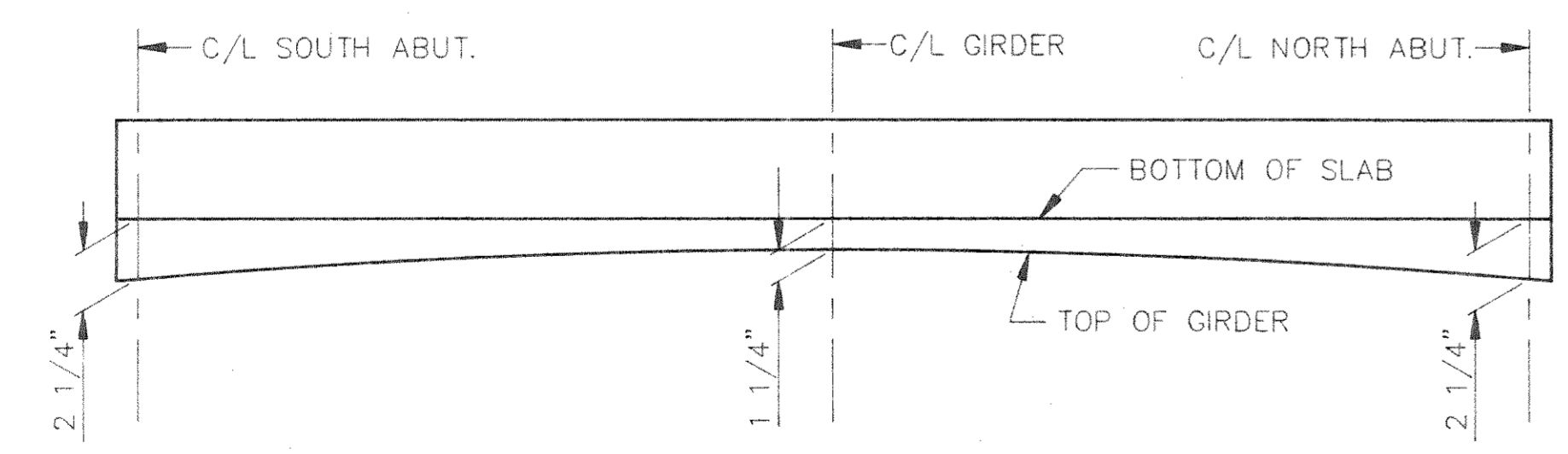
NOTE: THE FIRST OR FIRST TWO DIGITS OF A BAR MARK SIGNIFIES THE BAR SIZE.



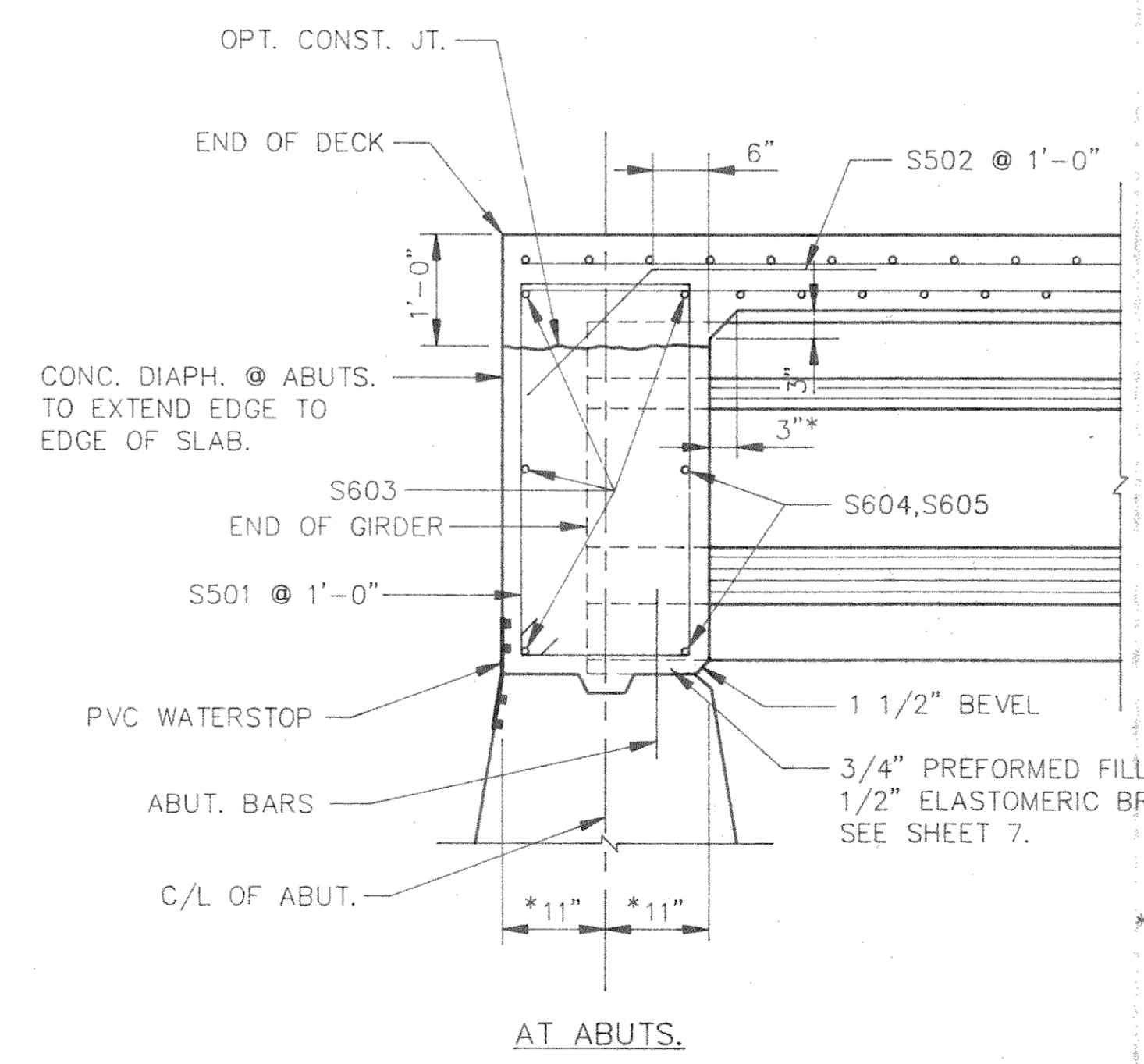
CROSS SECTION THRU ROADWAY



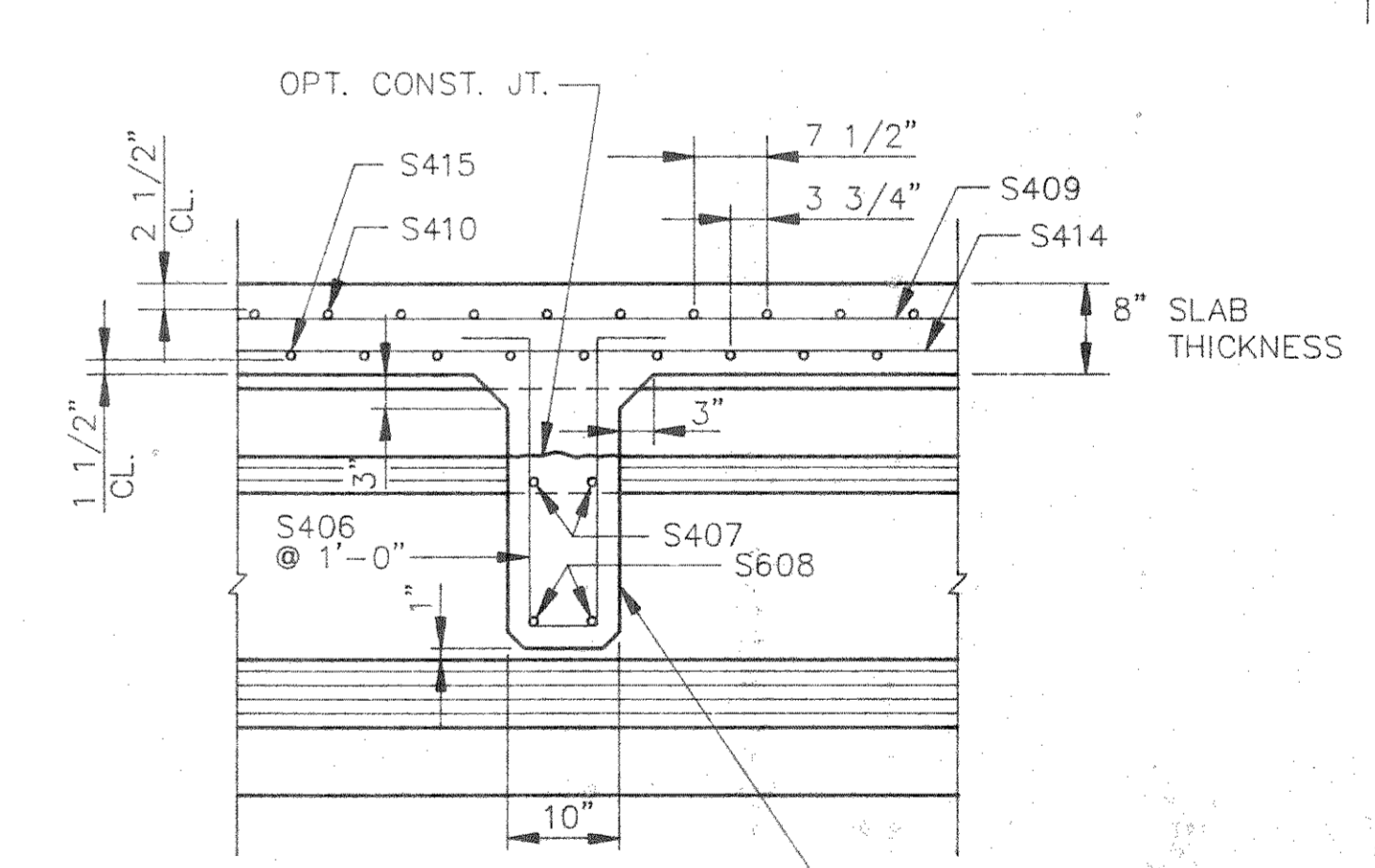
PLAN



SLAB FORMING DIAGRAM



LONGITUDINAL SECTION THRU ROADWAY



IN-SPAN DIAPH.

* DIMENSION NORMAL TO C/L OF ABUT.

NO.	DATE	REVISION	BY
STATE OF WISCONSIN DEPARTMENT OF TRANSPORTATION			
STRUCTURE B-35-112			
CONST. SPEC.	1989	DRAWN BY OMNI	PLANS CHECKED JWT
SUPERSTRUCTURE			SHEET 6 OF 9
X83349			