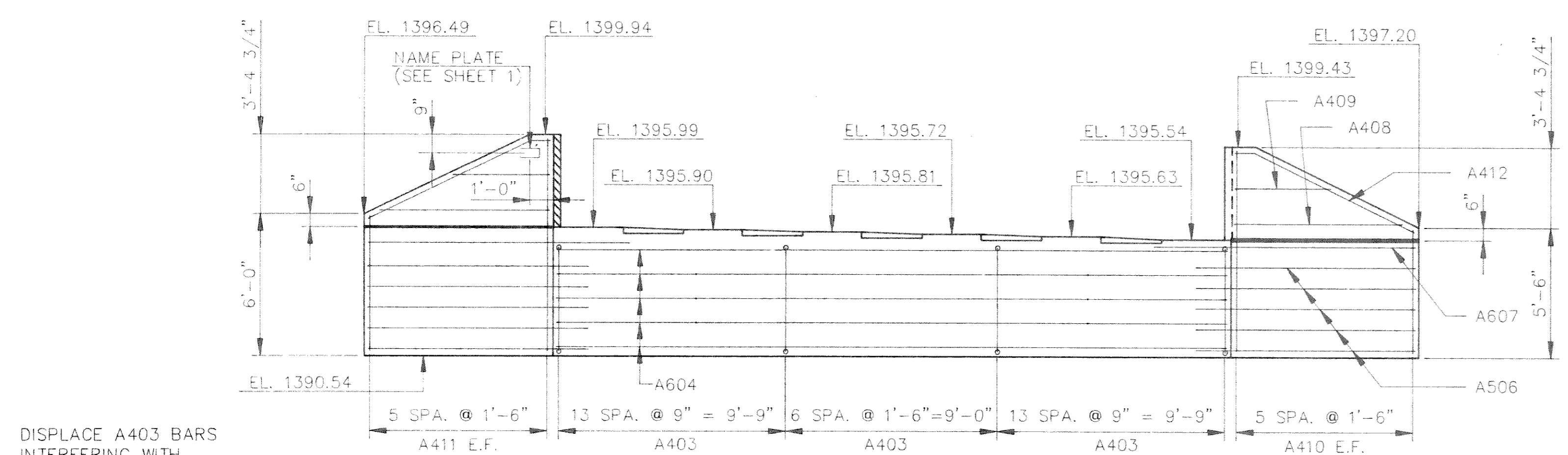


ELEVATION
NORTH ABUTMENT - LOOKING NORTH

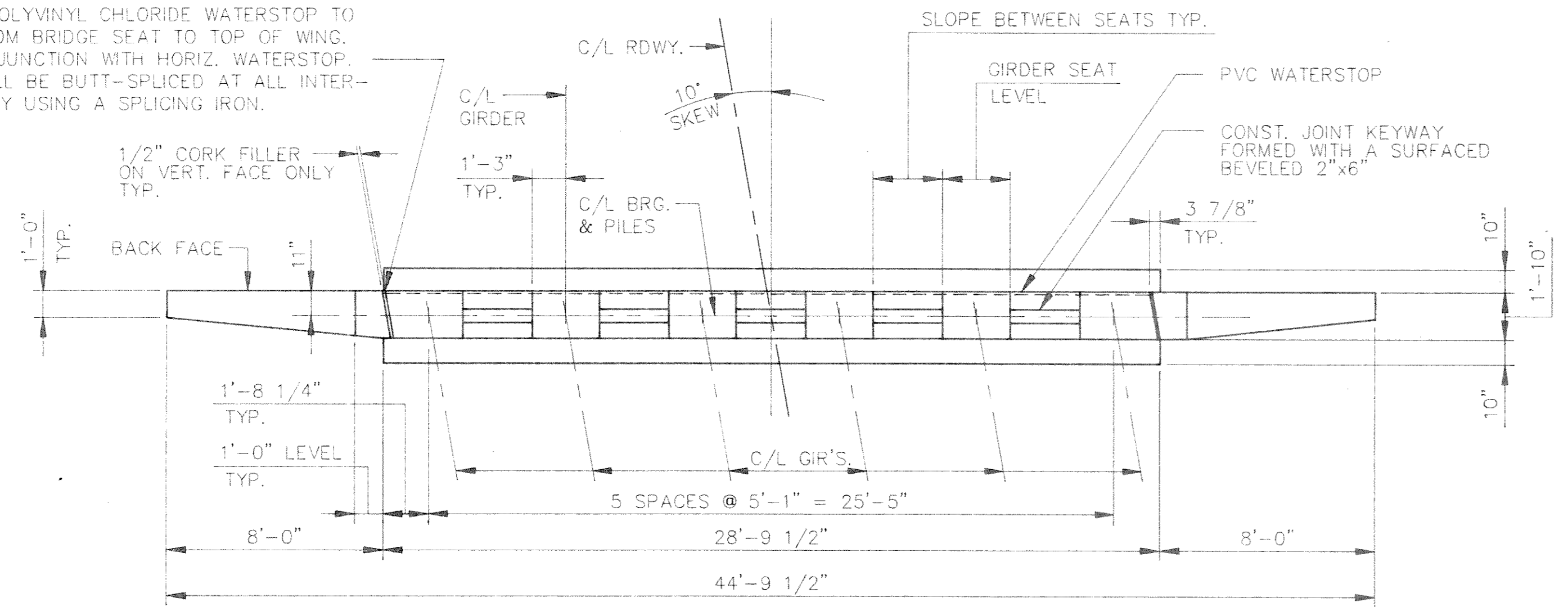
DISPLACE A403 BARS INTERFERING WITH PILING.



ELEVATION
SOUTH ABUTMENT - LOOKING SOUTH

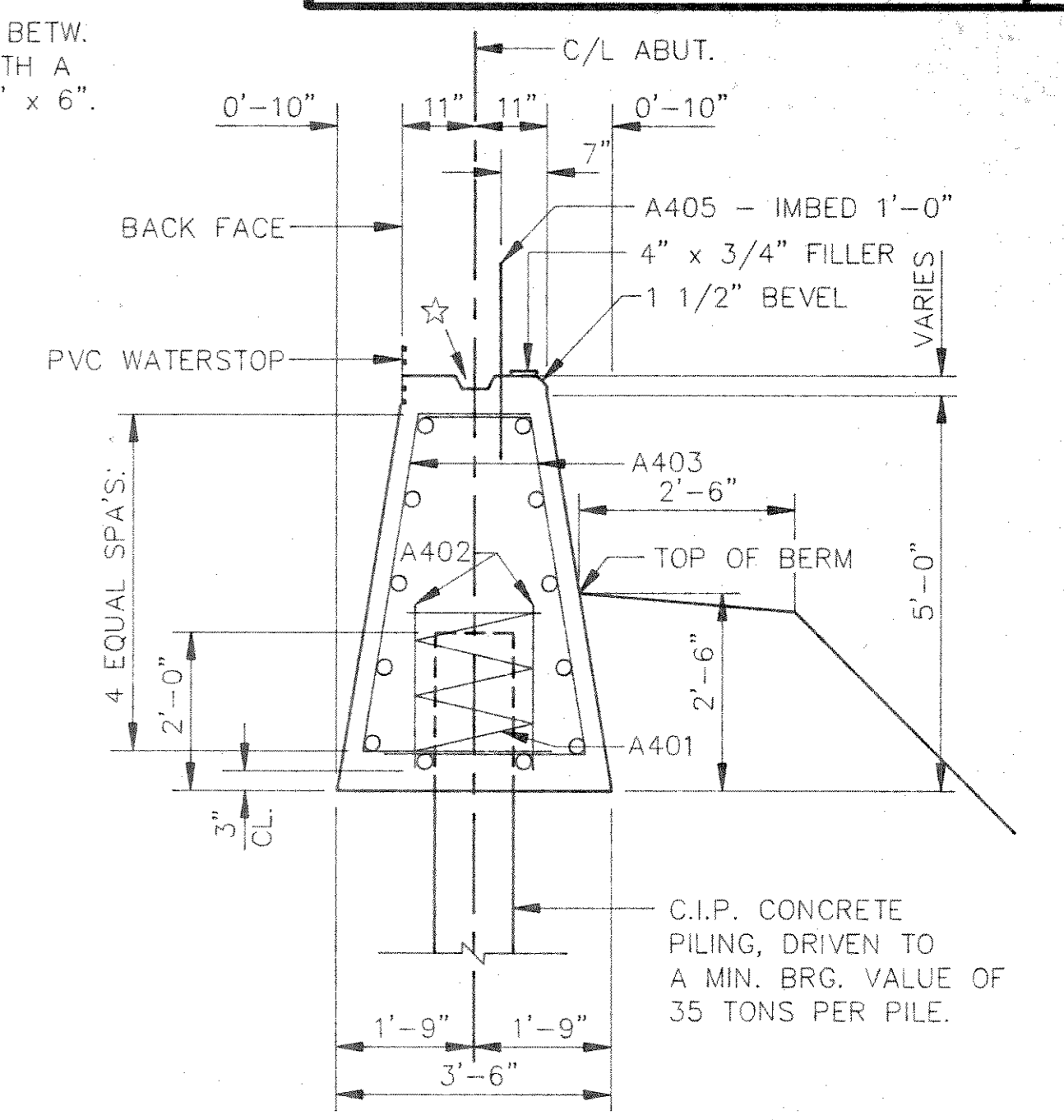
DISPLACE A403 BARS INTERFERING WITH PILING.

VERTICAL POLYVINYL CHLORIDE WATERSTOP TO EXTEND FROM BRIDGE SEAT TO TOP OF WING. SPLICE AT JUNCTION WITH HORIZ. WATERSTOP. P.C.W. SHALL BE BUTT-SPLICED AT ALL INTERSECTIONS BY USING A SPLICING IRON.



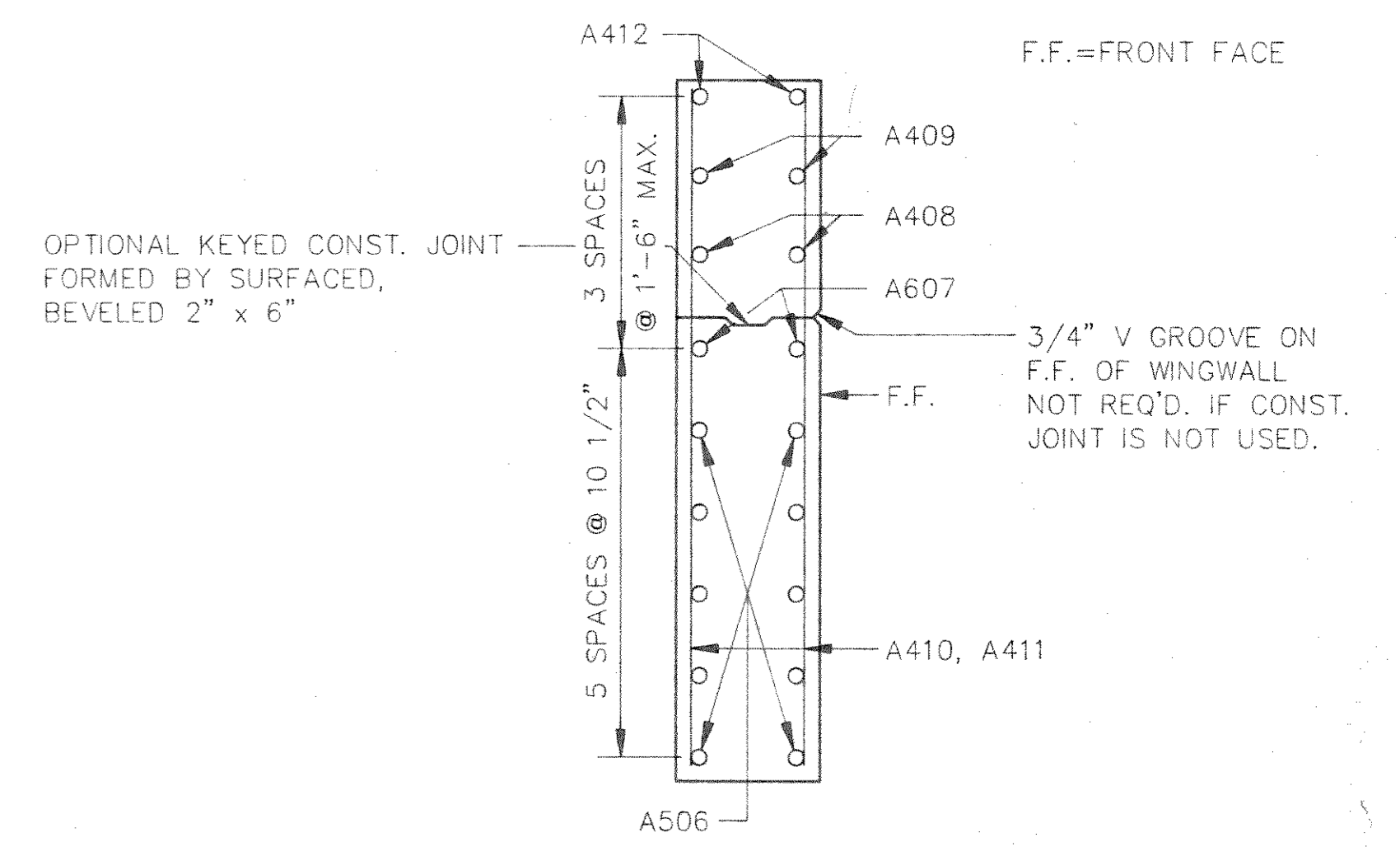
PLAN

☆ CONST. JOINT KEYWAY BETW. GIR. SEATS FORMED WITH A SURFACED, BEVELED 2" x 6".



SECT. THRU BODY
ALL HORIZ. BARS ARE A604

NOTE: A405 BARS MAY BE PLACED AFTER CONC. IS PLACED, BUT BEFORE INITIAL SET HAS OCCURRED. FILL/EXCAVATE TO BOTTOM OF FOOTING ELEVATION BEFORE DRIVING PILING.



SECTION A-A

NO.	DATE	REVISION	BY
STATE OF WISCONSIN DEPARTMENT OF TRANSPORTATION			
STRUCTURE B-35-112			
CONST. SPEC.	1989	DRAWN BY	OMNNI
		PLANS CHECKED	JWT
ABUTMENTS			SHEET 4 OF 9
X83349			