

GENERAL NOTES

1. DRAWINGS SHALL NOT BE SCALED.
2. BAR STEEL REINFORCEMENT SHALL BE IMBEDDED 2" CLEAR UNLESS OTHERWISE SHOWN OR NOTED.
3. THE SLOPE OF FILL IN FRONT OF THE ABUTMENTS SHALL BE COVERED WITH HEAVY RIPRAP TO THE EXTENT SHOWN ON THIS SHEET.
4. ELASTOMERIC BEARING PADS NEED NOT BE INDIVIDUALLY MOLDED PROVIDED THE CUT EDGES ARE SMOOTH AND TRUE.
5. FILLER SHALL CONFORM TO THE REQUIREMENTS OF A.A.S.H.T.O. DESIGNATION: M153, TYPE I, II, OR III OR A.A.S.H.T.O. DESIGNATION: M213.
6. THE EXISTING STRUCTURE (P-35-33) IS A 53' LONG, SINGLE SPAN LOW STEEL TRUSS BRIDGE.

DESIGN DATA

STRUCTURE IS DESIGNED FOR FUTURE WEARING SURFACE OF 20 POUNDS PER SQUARE FOOT.

LIVE LOAD:
 DESIGN RATING _____ HS20
 INVENTORY RATING _____ HS23
 OPERATING RATING _____ HS37
 MAX. STANDARD PERMIT VEHICLE LOAD _____ 250 kips

ALLOWABLE DESIGN STRESSES:
 CONCRETE MASONRY - SLAB _____ $f'c = 4,000$ psi
 ALL OTHER _____ $f'c = 3,500$ psi

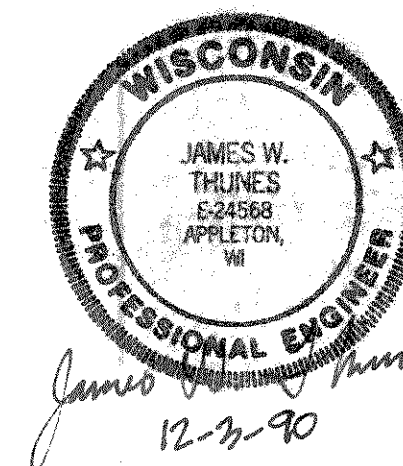
HIGH STRENGTH BAR
 STEEL REINFORCEMENT _____ $f_y = 60,000$ psi
 36" PRESTRESSED GIRDER
 CONCRETE MASONRY _____ $f'c = 6,000$ psi
 STRANDS - 1/2" DIA. WITH AN
 ULTIMATE TENSILE STRENGTH OF 270,000 psi

TRAFFIC DATA:
 ADT= 50 (1988)
 ADT= 70 (2011)

HYDRAULIC DATA:
 Q 100 _____ 2500 C.F.S.
 VELOCITY _____ 7.1 F.P.S.
 HIGH WATER _____ EL. 1395.3
 WATERWAY AREA _____ 352 S.F.
 DRAINAGE AREA _____ 53 SQ. MILES
 ROADWAY OVERTOPPING FREQUENCY _____ N/A YEARS

FOUNDATION DATA:
 ABUTMENTS TO BE SUPPORTED ON 10 3/4" DIA. C.I.P. CONC. PILING, ESTIMATED 20'-0" LONG AND DRIVEN TO A MINIMUM BEARING VALUE OF 35 TONS PER PILE.

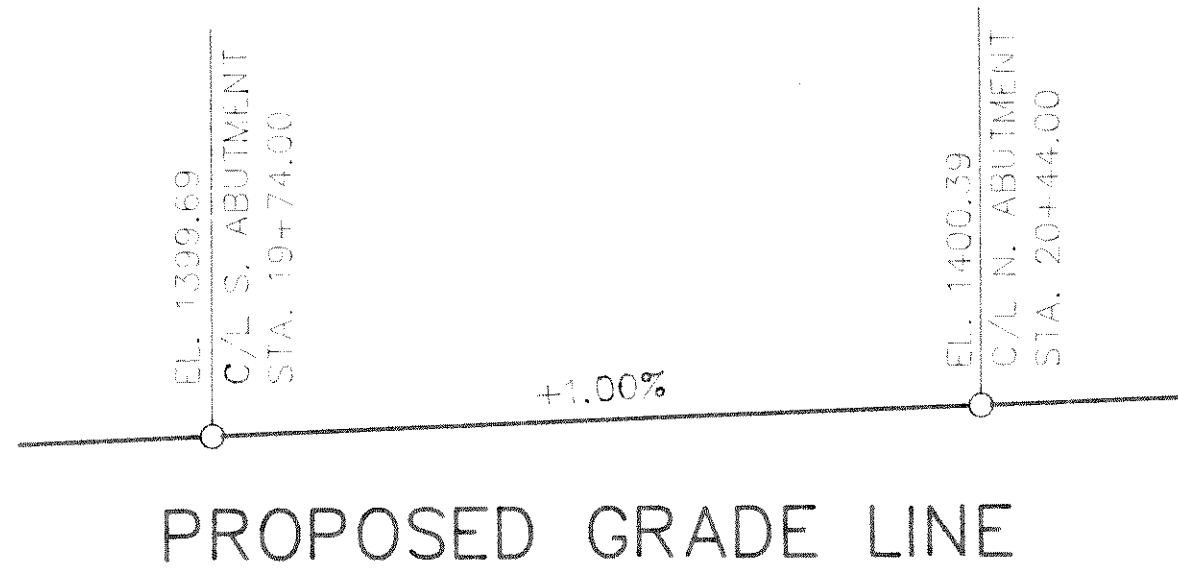
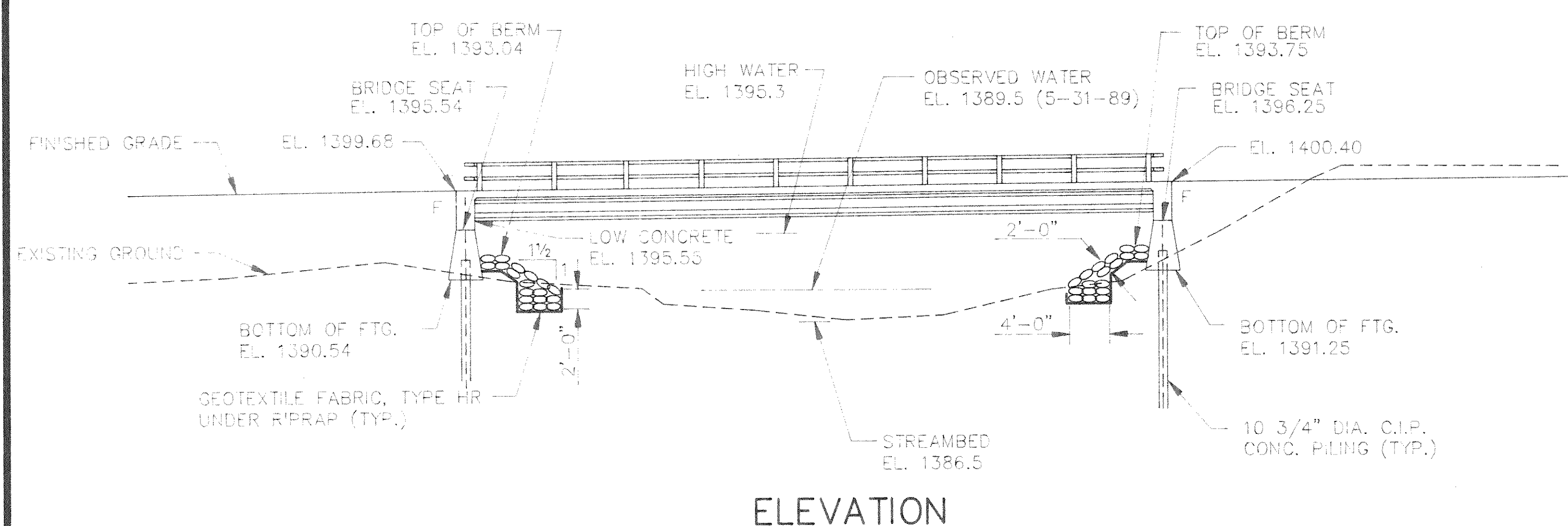
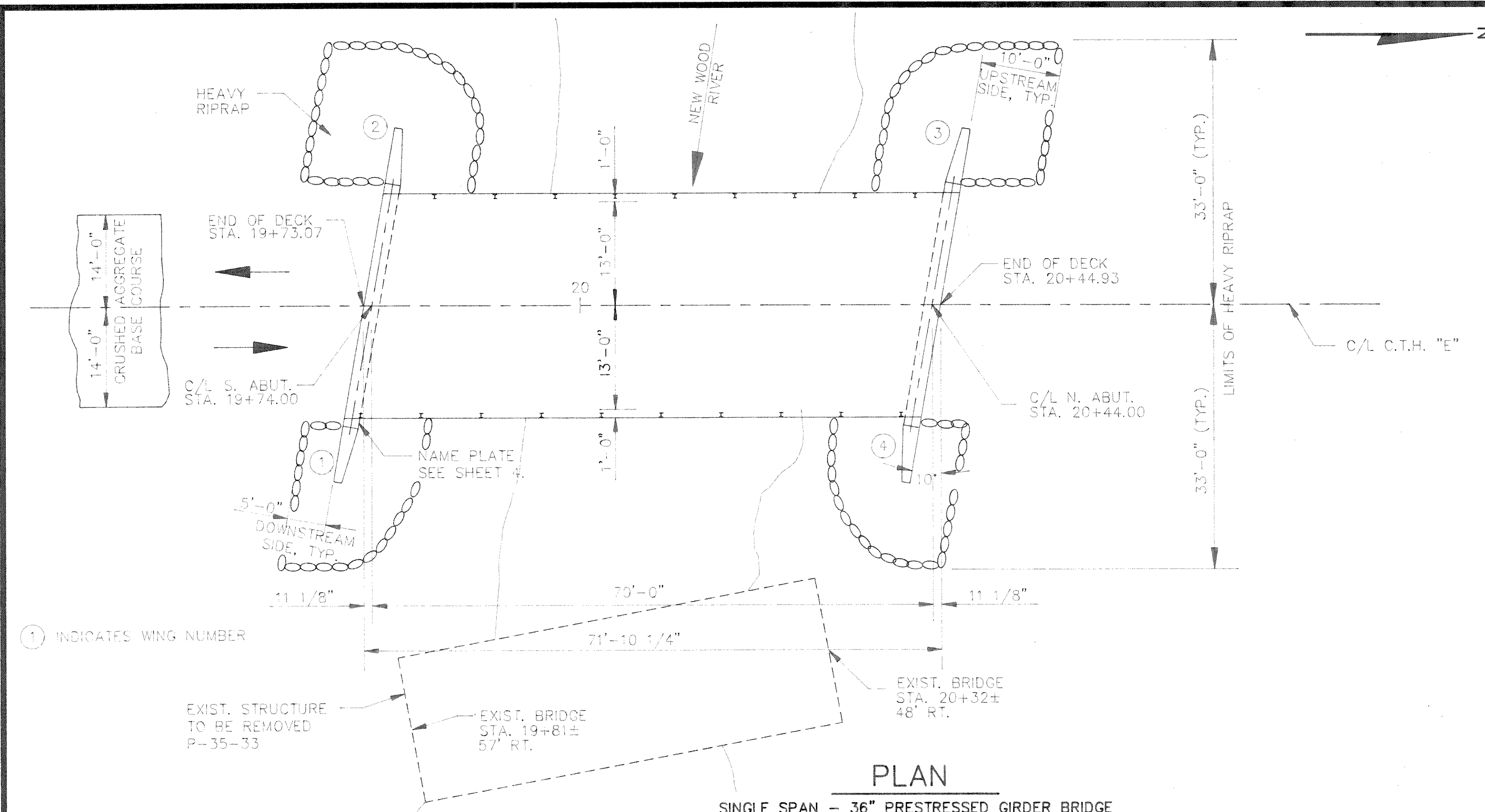
NO.	DATE	REVISION	BY
OMNI ENGINEERS			
STATE OF WISCONSIN DEPARTMENT OF TRANSPORTATION DIVISION OF HIGHWAYS			
STRUCTURE B-35-112			
C.T.H. "E" OVER NEW WOOD RIVER			
COUNTY	LINCOLN	TOWN OF	HARDING
DESIGN SPEC.	AASHTO '89	LOAD	HS20
CONST. SPEC.		CONST. SPEC.	1989
DESIGNED BY	OMNI	DESIGN CK'D.	JWT
DRAWN BY	OMNI	DRAWN CK'D.	JWT
APPROVED _____		STATE BRIDGE ENGINEER _____ DATE _____	
GENERAL PLAN			SHEET 1 OF 9 X83349



BRIDGE OFFICE CONTACT: D. BABLER
(608) 266-8486

LIST OF DRAWINGS (X83349)

1. GENERAL PLAN
2. GENERAL PLAN
3. SUBSURFACE EXPLORATION
4. ABUTMENTS
5. ABUTMENT DETAILS
6. SUPERSTRUCTURE
7. 36" PRESTRESSED GIRDER DETAILS
8. STEEL DIAPHRAGM ALTERNATE
9. TUBULAR RAILING, TYPE F



BENCH MARKS

NO.	STATION	DESCRIPTION	ELEVATION
2	20+30	CHISELED "□" IN NORTH ABUTMENT	34' RT. 1396.59