

**GENERAL NOTES**

DRAWINGS SHALL NOT BE SCALED.  
 BAR STEEL REINFORCEMENT SHALL BE EMBEDDED 2" CLEAR UNLESS OTHERWISE NOTED.  
 THE SLOPES IN FRONT OF THE ABUTMENT SHALL BE COVERED WITH HEAVY RIPRAP TO THE EXTENT SHOWN ON THIS SHEET.  
 JOINT FILLER SHALL CONFORM TO A.A.S.H.T.O. DESIGNATION M153 TYPE 1, 11, OR 111 OR M213.  
 SLAB FALSEWORK TO BE SUPPORTED ON PILES UNLESS AN ALTERNATE METHOD IS APPROVED BY THE ENGINEER.  
 THIS STRUCTURE WILL REPLACE B-35-854 WHICH IS A SINGLE SPAN CONC. "T" BEAM 19' WIDE x 44' LG.

**DESIGN DATA**

STRUCTURE IS DESIGNED FOR A FUTURE WEARING SURFACE OF 20 P.S.F.

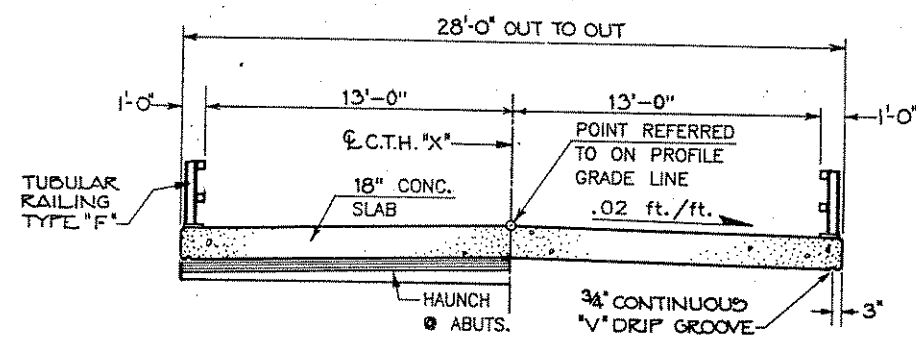
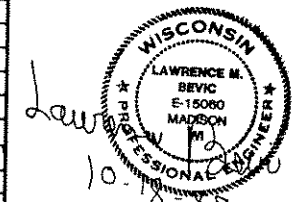
**RATINGS:** DESIGN RATING — H5 20  
 INVENTORY RATING — H5 21  
 OPERATING RATING — H5 35  
 MAX. STD. PERMIT VEHICLE LOAD — 220 KIPS

**ALLOWABLE DESIGN STRESSES**

CONCRETE MASONRY — SLAB ——— f'c = 4,000 P.S.I.  
 OTHER ——— f'c = 3,500 P.S.I.  
 HIGH STRENGTH BAR STEEL REINFORCEMENT GRADE-60 ——— fy = 60,000 P.S.I.

**FOUNDATION DATA**

ABUTMENTS TO BE SUPPORTED ON 10 3/4" C.I.P. CONCRETE PILES EST. 55'-0" LG. AND DRIVEN TO A MIN. BEARING VALUE OF 30 TONS/PILE.



**CROSS SECTION THRU ROADWAY**

**HYDRAULIC DATA**

DRAINAGE AREA	20.1 SQ. MI.
HIGHWATER 100	EL. 1399.0
Q 100	2,100 C.F.S.
WATERWAY AREA	BRIDGE — 176 SQ. FT.
	OVERFLOW — 115 SQ. FT.
VELOCITY	11.3 F.P.S.
OVERFLOW FREQUENCY	Q100

**TRAFFIC DATA**

A.D.T. (	240
R.D.S.	55 M.P.H.

**TOTAL ESTIMATED QUANTITIES**

BID ITEMS	UNIT	S. ABUT.	N. ABUT.	SUPER	TOTAL
REMOVING OLD STRUCTURE STA. 17+02	L.S.				1
EXCAVATION FOR STRUCTURES, BRIDGES, B-35-105	L.S.				1
CONCRETE MASONRY, BRIDGES	C.Y.	25.7	25.7	56.6	108.0
HIGH STRENGTH BAR STEEL REINFORCEMENT, BRIDGES	LBS.	2,005	2,005	7,700	11,710
COATED HIGH STRENGTH BAR STEEL REINFORCEMENT, BRIDGES	LBS.			4,670	4,670
HEAVY RIPRAP	C.Y.	50	45		95
PROTECTIVE SURFACE TREATMENT	GAL.			5	5
GEOTEXTILE FABRIC, TYPE HR	S.Y.	76	68		144
C.I.P. CONCRETE PILING, DELIVERED & DRIVEN 10 3/4" Ø	L.F.	330	330		660
TUBULAR RAILING TYPE "F" B-35-105	L.S.				1
FILLER	SIZE				12 1/2
POLYVINYL CHLORIDE WATERSTOP	L.F.	35	35		70

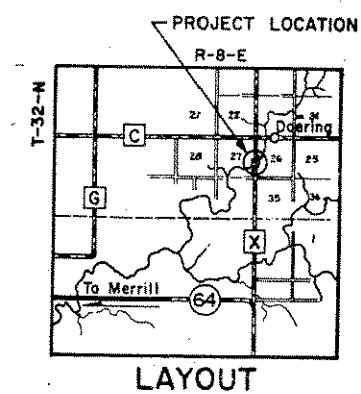
NON-BID ITEMS

PLANS PREPARED BY  
 BARRIENTOS & ASSOCIATES, INC.  
 CONSULTING ENGINEERS  
 3822 WINDY POINT RD. - MADISON, WI 53705  
 PH. 608 - 238 - 8781

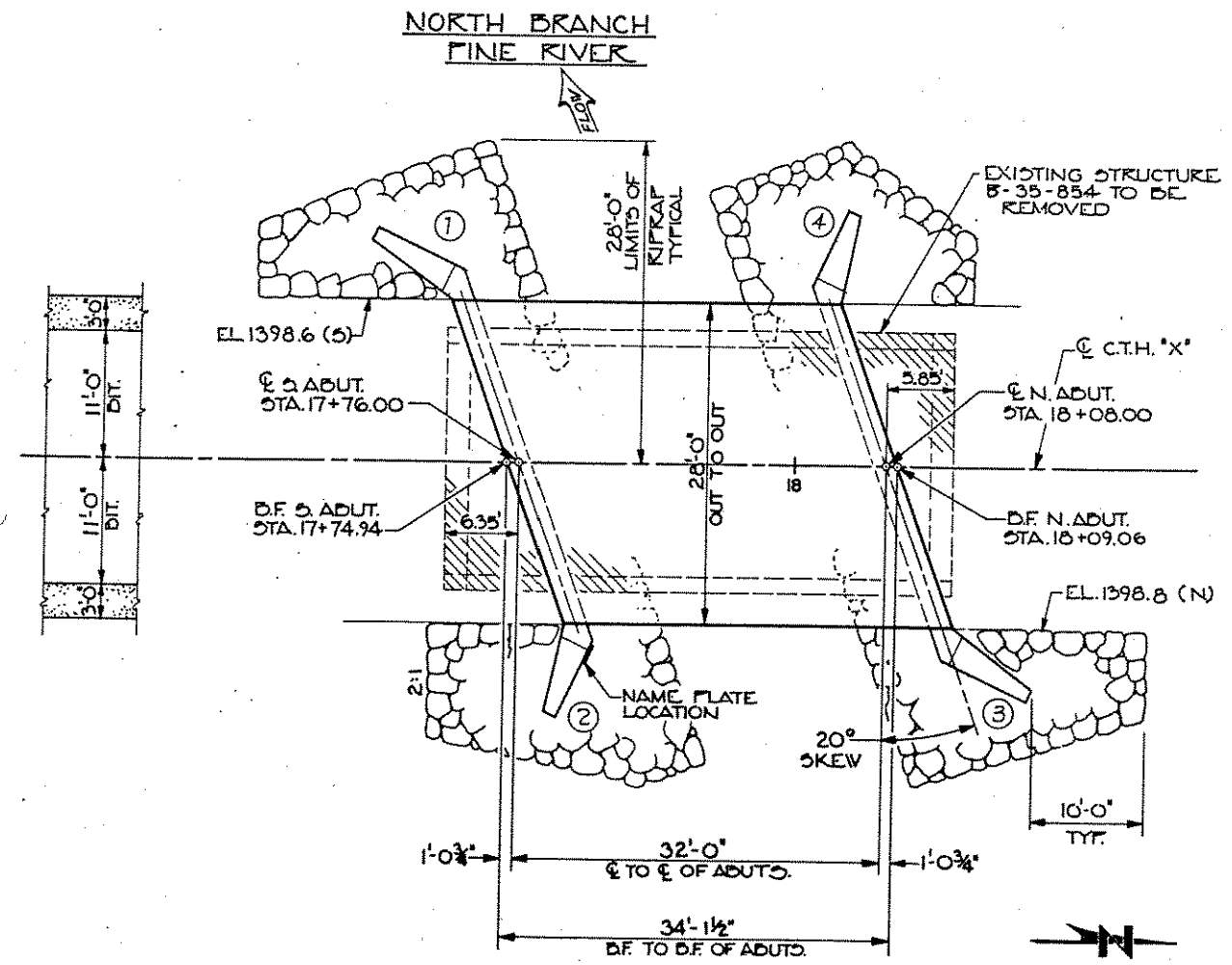
**LIST OF DRAWINGS**

1. GENERAL PLAN
2. SUBSURFACE EXPLORATION
3. ABUTMENTS
4. WINGS
5. SUPERSTRUCTURE
6. TUBULAR RAILING TYPE "F"

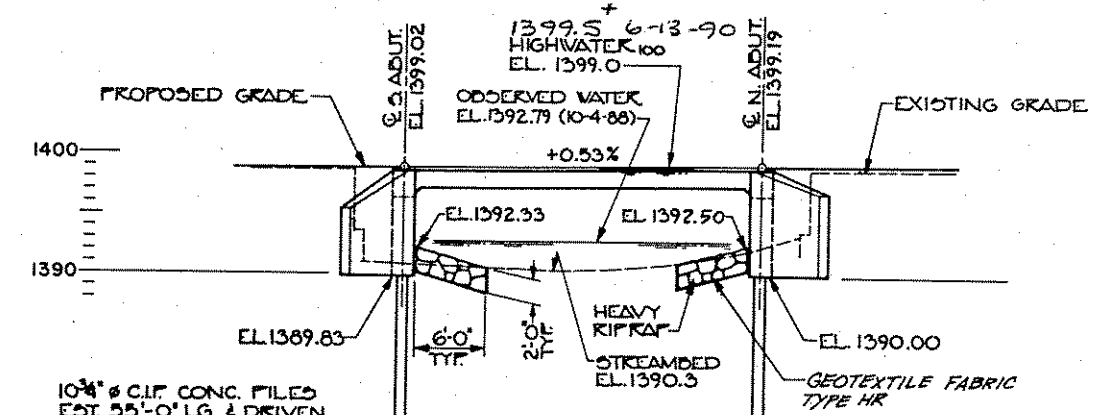
BRIDGE OFFICE CONTACT  
 (608) 266-8486, DAVE BABLER



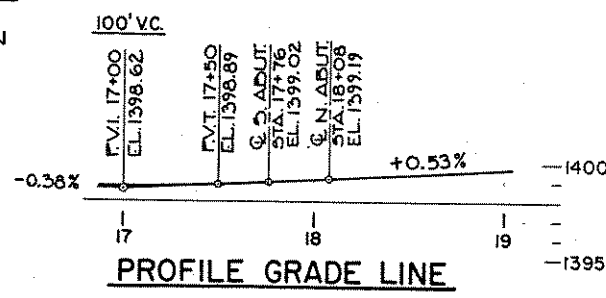
LAYOUT



PLAN  
 SINGLE SPAN CONCRETE SLAB



ELEVATION  
 RAILING NOT SHOWN



PROFILE GRADE LINE

**BENCH MARKS**

NO.	STA.	LOCATION	ELEV.
1	12+74	RR SPIKE IN 20' ELM, 1.2' UP N. SIDE	157' RT. 1402.375
2	17+70	CHISELED "C" E. CORNER OF S. ABUT.	12' RT. 1399.155
3	22+64	CHISELED "C" E. END OF N. HEADWALL	29.5' RT. 1402.765

DOT MON. SE WINGWALL - New STRUC. 1498.83

No.	Date	Revision	By
STATE OF WISCONSIN DEPARTMENT OF TRANSPORTATION DIVISION OF HIGHWAYS			
<b>STRUCTURE B-35-105</b>			
<b>C.T.H. "X" OVER N. BR. PINE RIVER</b>			
County	LINCOLN	Town	SCHLEY
Design Spec.	A.A.S.H.T.O. '88	Load	HS 20
Const. Spec.	WI '89	Checked	J.T.T.
Drawn	By	Checked	L.M.D.
Approved	State Bridge Engineer		Date
<b>GENERAL PLAN</b>			SHEET 1 OF 6
			X 82686