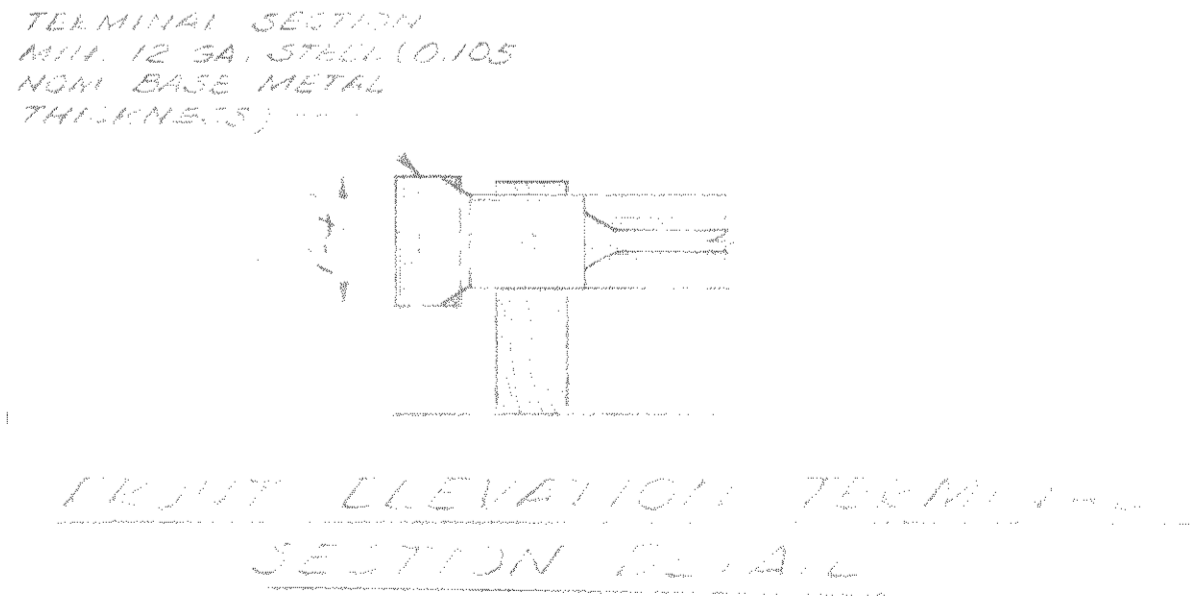
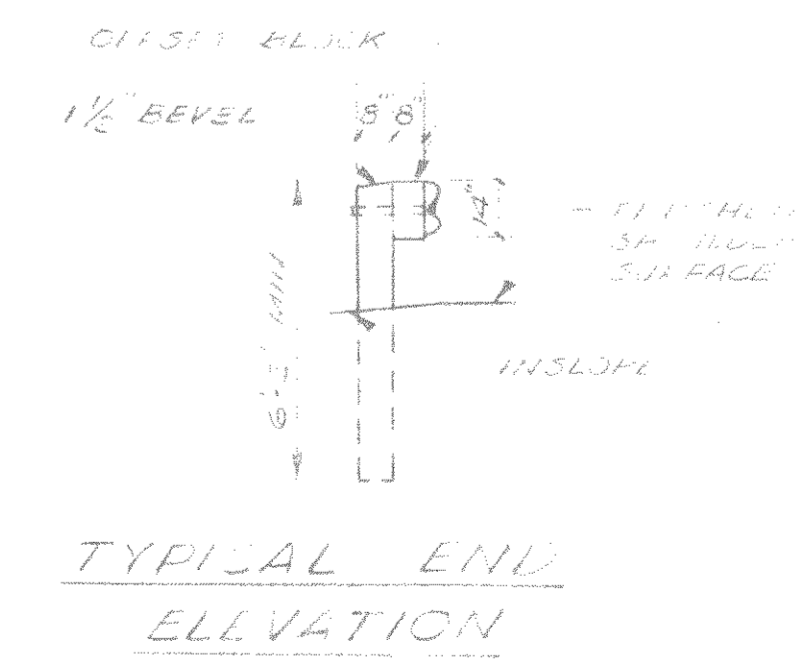
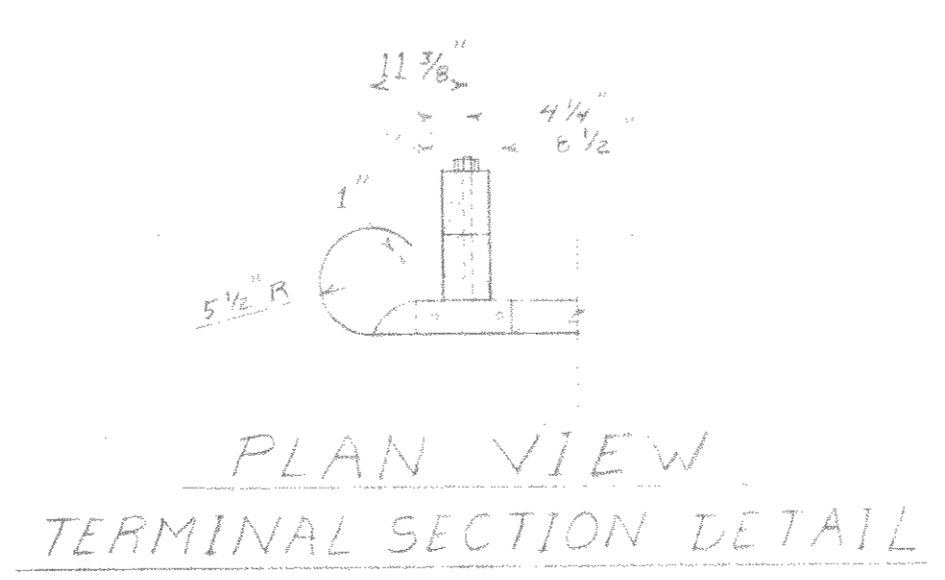
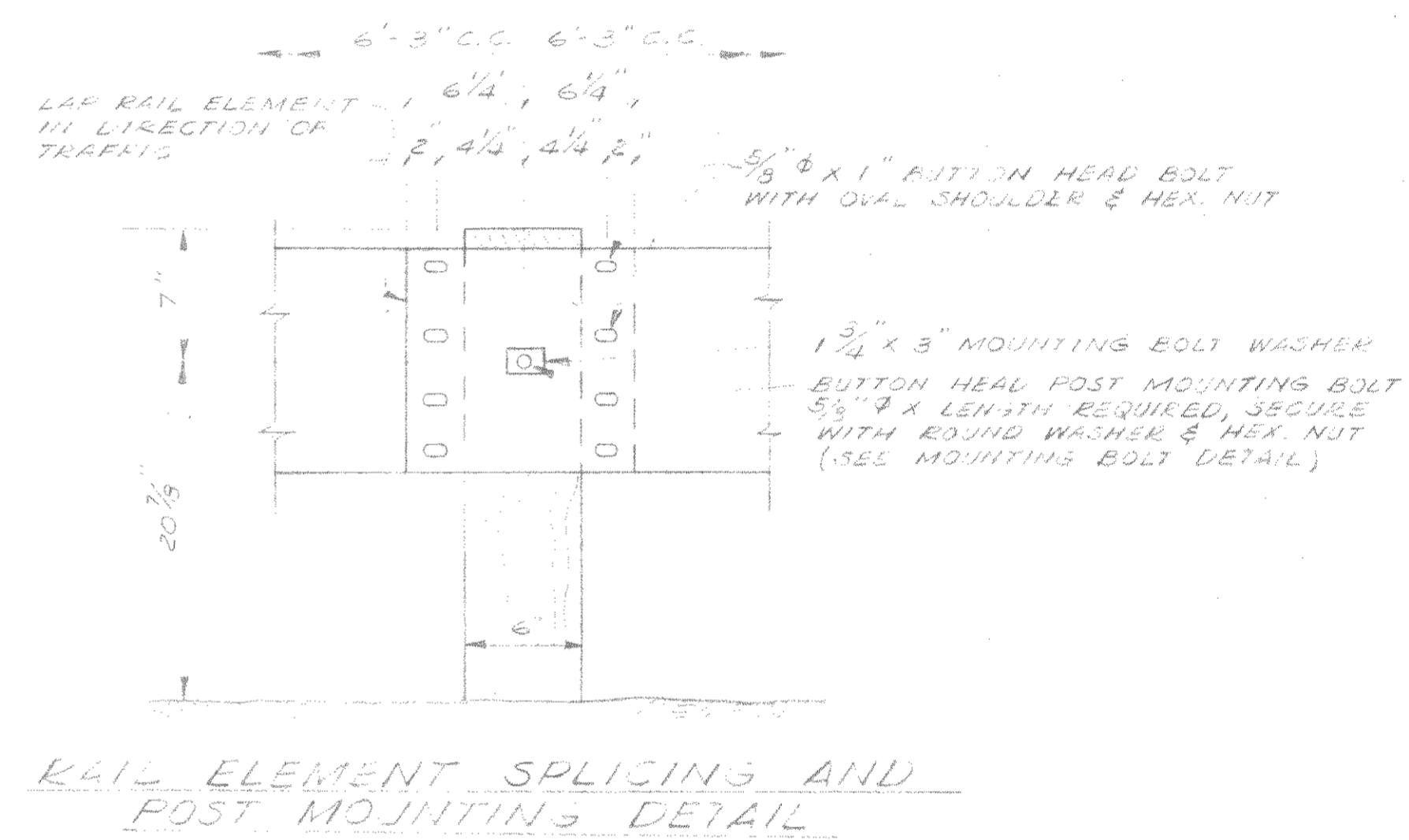


**NOTE:**  
 1. SAWED AND TREATED TIMBER POSTS AND OFFSET BLOCKS SHALL BE FURNISHED AND PLACED IN ACCORDANCE WITH STANDARD SPECIFICATIONS. POSTS SHALL BE 6" X 8" X 6'-0" AND HAVE 6" X 8" X 10" OFFSET BLOCKS.  
 2. PLACE 1'-0" SECTION OF RAIL ELEMENT, WITH A 3/4" SLOTTED HOLE FOR MOUNTING, BEHIND CONTINUOUS RAIL ELEMENT AT INTERMEDIATE POSTS.



MILL WELT BRIDGE  
 APPROACH ROADS  
 B 35-73  
 MILWAUKEE, WIS.  
 OCT 75

DESIGNED: <u>REK</u>	MEAD AND HUNT, INC. CONSULTING ENGINEERS MADISON, WISCONSIN	A 1540
DRAWN: <u>JLJ</u>		
CHECKED: _____		
APPROVED: _____		

JOB NO. 4477A