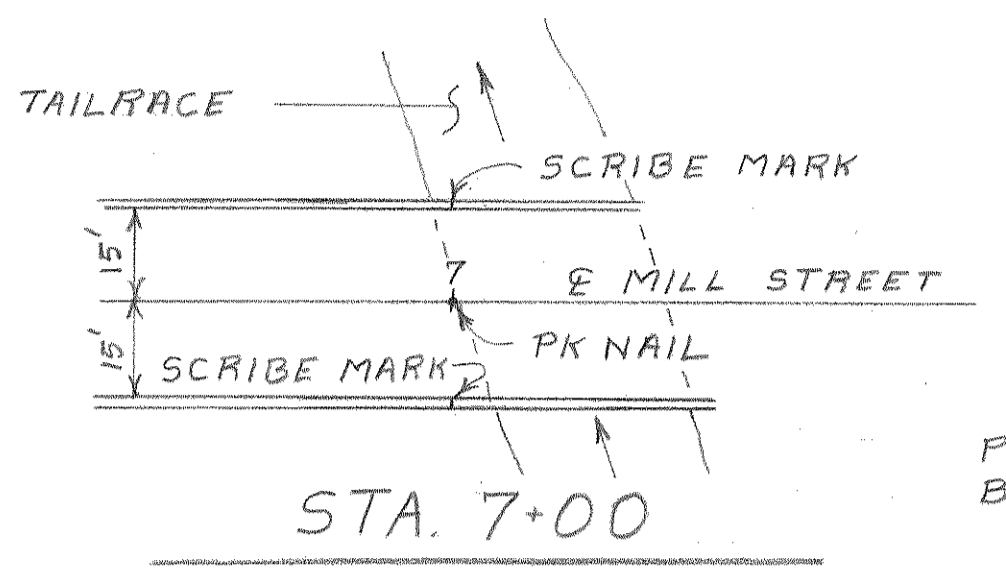
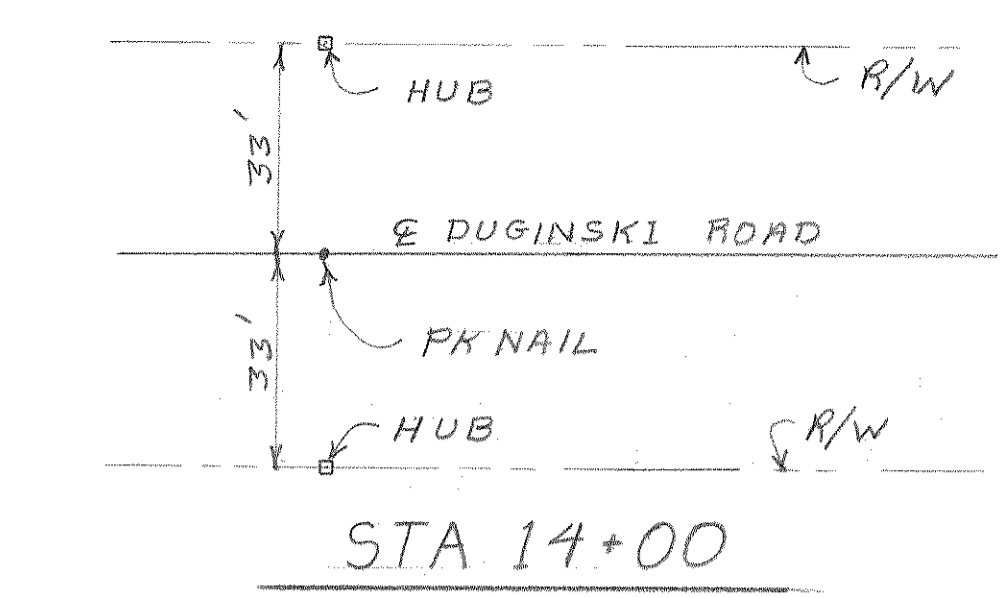


STATE PROJECT NUMBER	SHEET NO.
9856-1-70	5
PLAN AND PROFILE STA 9+81 - STA 13+50 PLUS APPROACH ROAD STA 8+00 - STA 9+81 DUGINSKI ROAD LINCOLN COUNTY	

DATE: _____
 BY: _____
 CHECKED: _____
 NO. _____

DATE: _____
 BY: _____
 CHECKED: _____
 NO. _____

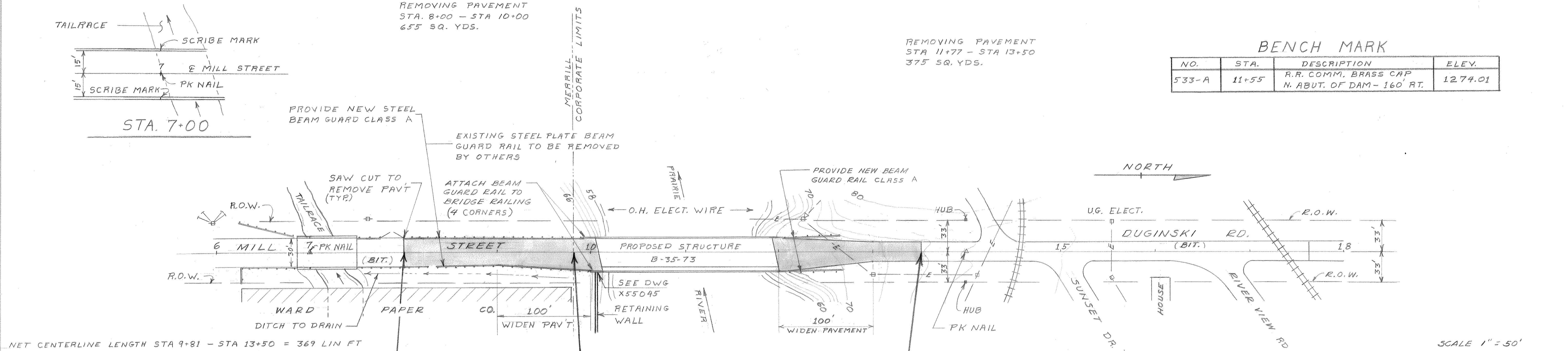


REMOVING PAVEMENT
 STA. 8+00 - STA 10+00
 655 SQ. YDS.

REMOVING PAVEMENT
 STA 11+77 - STA 13+50
 375 SQ. YDS.

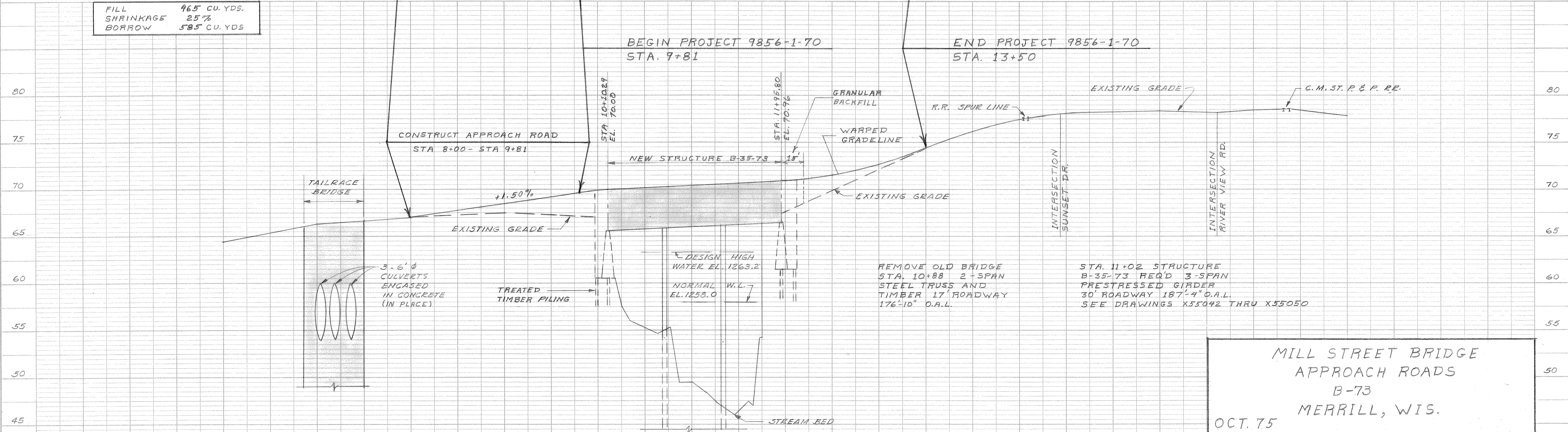
BENCH MARK

NO.	STA.	DESCRIPTION	ELEV.
533-A	11+55	R.R. COMM. BRASS CAP N. ABUT. OF DAM - 160' RT.	1274.01



NET CENTERLINE LENGTH STA 9+81 - STA 13+50 = 369 LIN FT

FILL	965 CU. YDS.
SHRINKAGE	25%
BORROW	585 CU. YDS.



MILL STREET BRIDGE
 APPROACH ROADS
 B-73
 MERRILL, WIS.
 OCT. 75

FINISHED	66.46	66.29	67.06	68.56	69.95	70.46	70.98	71.50	72.65	74.40	76.10	78.02	78.32
EXISTING	64.46	66.29	67.06	67.50	67.04	66.65	67.65	69.85	71.81	74.40	76.10	78.02	78.32
	6+00	7	8	9	10+00	11	12	13	14	15+00	16		

DESIGNED	GRK	MEAD AND HUNT, INC. CONSULTING ENGINEERS MADISON, WISCONSIN	A-6548 JOB NO. 665-75A
DRAWN	DAS		
TRACED			
CHECKED	ECB		
APPROVED			