

PEN TABLE = collgbr.tbl
 DATE OF PLOT = 01/21/94
 DESIGN FILE IS /usr/work/trbrldge/5019gp.dgn
 DGN LEVELS ON = 1-63

ON = 1-63
 5019gp.dgn
 5019gp.dgn

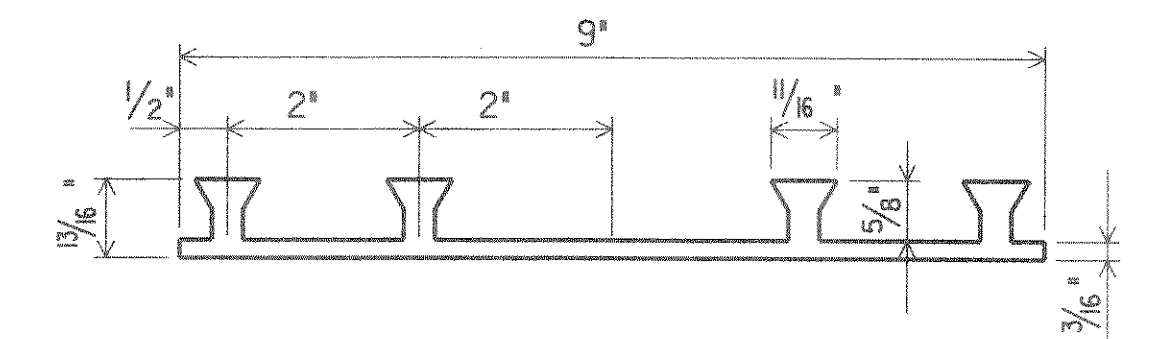
CHECKED BY:
 BACK CHECKED BY:
 CORRECTED BY:

TOTAL ESTIMATED QUANTITIES

BID ITEMS	UNIT	S. ABUT.	N. ABUT.	SUPER.	TOTAL
REMOVING OLD BRIDGE, STA. 10+00	L.S.	-----	-----	-----	1
EXCAVATION FOR STRUCTURES, BRIDGES B-35-126	L.S.	-----	-----	-----	1
CONCRETE MASONRY, BRIDGES	C.Y.	16.7	16.7	54.6	88
PROTECTIVE SURFACE TREATMENT	GAL.	-----	-----	6	6
HIGH-STRENGTH BAR STEEL REINFORCEMENT, BRIDGES	LB.	1,480	1,480	6,570	9,530
COATED HIGH-STRENGTH BAR STEEL REINFORCEMENT, BRIDGES	LB.	-----	-----	1,460	1,460
STEEL PILING, DELIVERED AND DRIVEN, HP 10-INCH 42 POUND	L.F.	200	200	-----	400
TUBULAR RAILING, TYPE F, STRUCTURE B-35-126	L.S.	-----	-----	-----	1
HEAVY RIPRAP	C.Y.	30	30	-----	60
GEOTEXTILE FABRIC, TYPE HR	S.Y.	60	60	-----	120
NON-BID ITEMS					
FILLER	SIZE	-----	-----	-----	1/2" & 3/4"
POLYVINYL CHLORIDE WATERSTOP	L.F.	32	32	-----	64

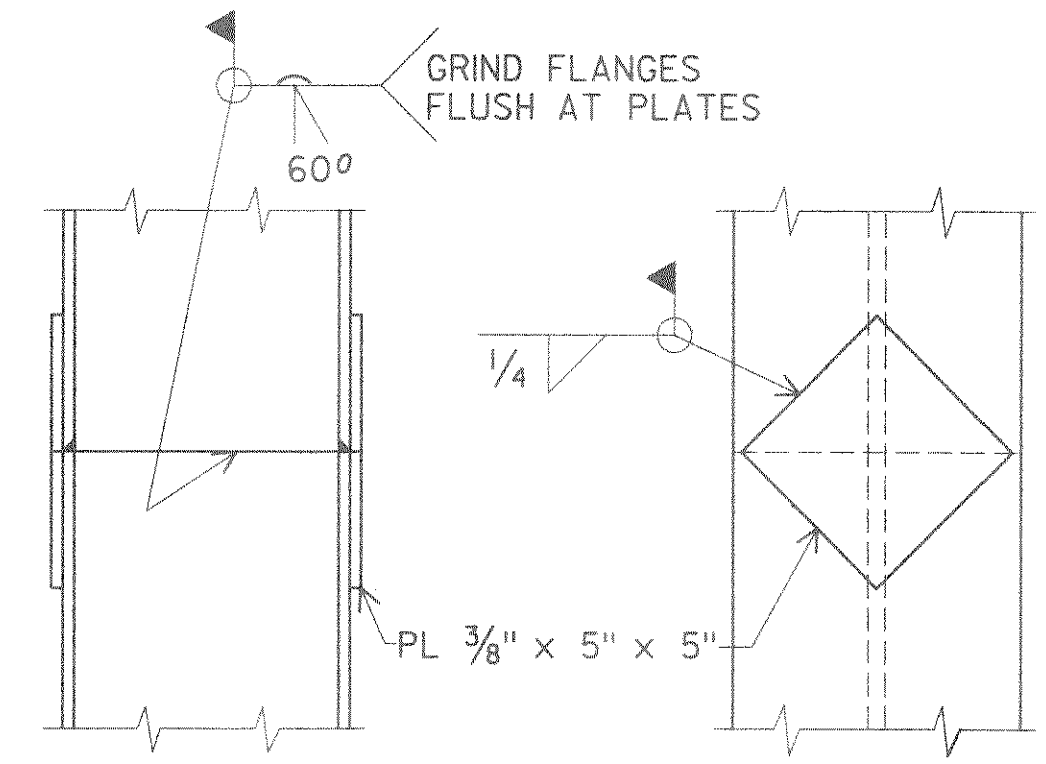
GENERAL NOTES

DRAWINGS SHALL NOT BE SCALED.
 BAR STEEL REINFORCEMENT SHALL BE EMBEDDED 2" CLEAR UNLESS SHOWN OR NOTED OTHERWISE.
 THE FIRST DIGIT OF A THREE DIGIT BAR NO. AND THE FIRST TWO DIGITS OF A FOUR DIGIT BAR NO. SIGNIFIES THE BAR SIZE.
 JOINT FILLER SHALL CONFORM TO THE REQUIREMENTS OF A.A.S.H.T.O. DESIGNATION M 153, TYPE I, II OR III OR A.A.S.H.T.O. DESIGNATION M 213.
 THE SLOPE OF THE FILL IN FRONT OF THE ABUTMENTS SHALL BE COVERED WITH HEAVY RIPRAP TO THE EXTENT SHOWN ON THE GENERAL PLAN SHEET AND IN THE ABUTMENT DETAILS.
 SLAB FALSEWORK SHALL BE SUPPORTED ON PILES UNLESS OTHERWISE APPROVED BY THE ENGINEER.
 PROTECTIVE SURFACE TREATMENT IS TO BE APPLIED TO THE TOP OF DECK.
 THE EXISTING BRIDGE, P-35-96, IS A SINGLE SPAN STEEL DECK GIRDER STRUCTURE 31.5 FT. LONG WITH A 20.1 FT. CLEAR WIDTH.



POLYVINYL CHLORIDE WATERSTOP DETAIL
 (P.C.W.)

NOTE: WATERSTOP SHALL BE FASTENED TO FORMS BY NAILING OUTSIDE OF OUTSIDE TABS.



HP 10 x 42 SPLICE DETAIL

No.	Date	Revision	By
PLANS PREPARED BY AYRES Engineers/Architects ASSOCIATES Planners/Surveyors Owen Ayres & Associates Inc. Eau Claire, Wisconsin			
STATE OF WISCONSIN DEPARTMENT OF TRANSPORTATION			
STRUCTURE		B-35-126	
Const. Spec.	1989	Drawn By	CLS
		Plans Checked	C.B.M.
QUANTITIES & NOTES			SHEET 2 OF 7