

CAMBER SPANS AS SHOWN TO PROVIDE FOR DEADLOAD DEFLECTION AND FUTURE PLASTIC FLOW. CAMBER DOES NOT INCLUDE ALLOWANCE FOR FORM SETTLEMENT. DEADLOAD DEFLECTION ONLY APPROXIMATELY 1/4 OF CAMBER VALUES SHOWN.

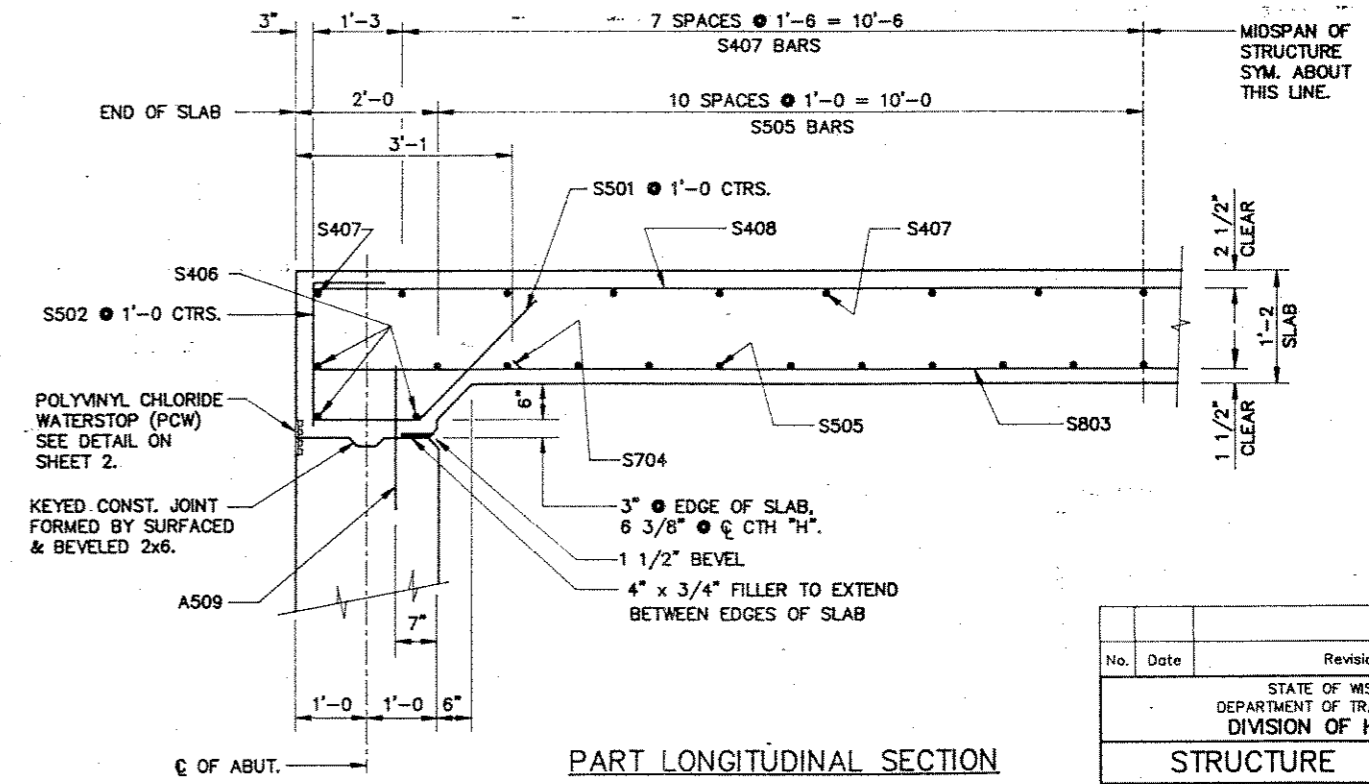
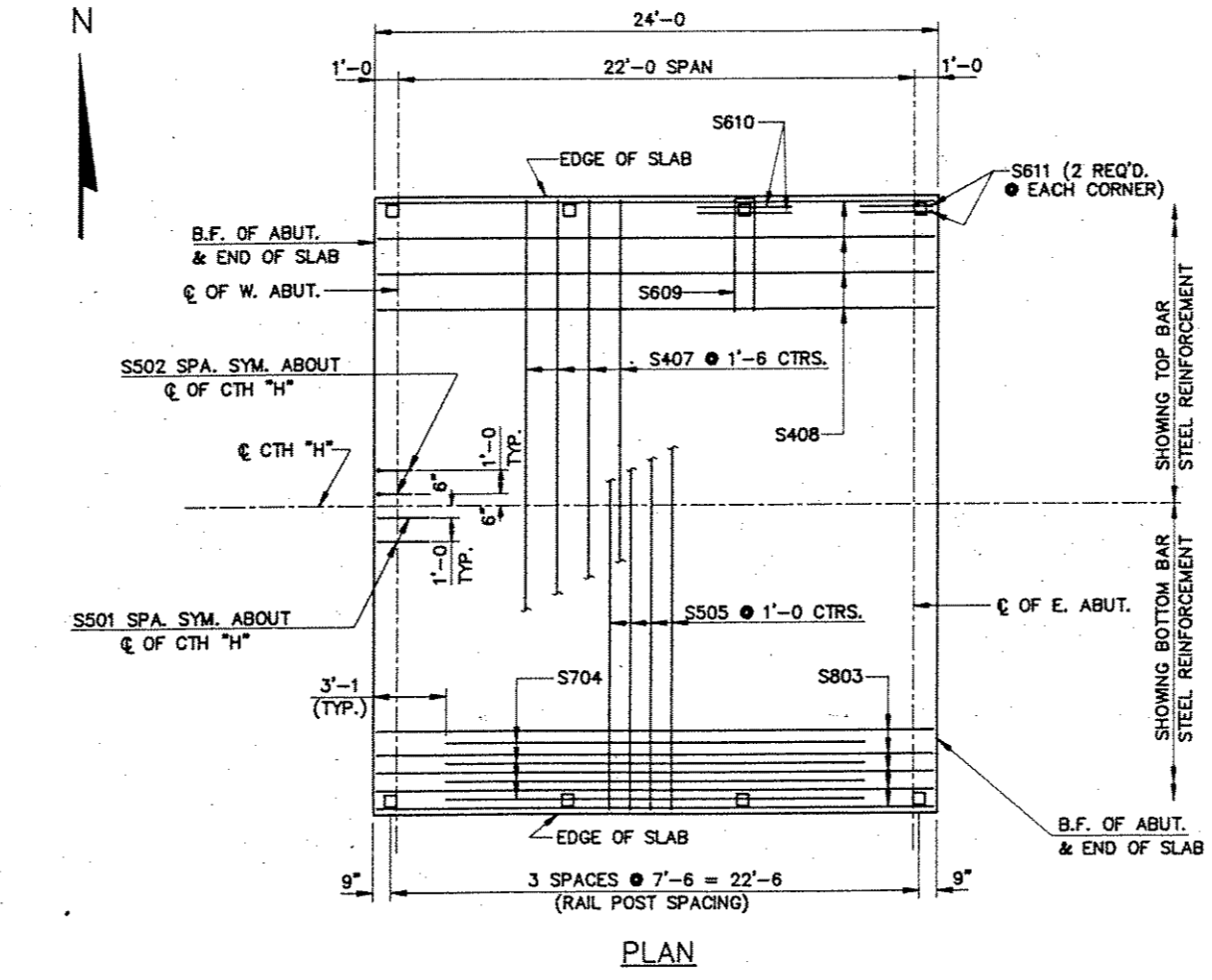
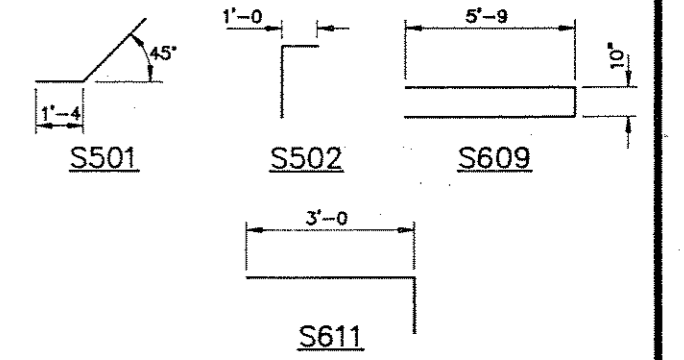
GENERAL NOTES

ALL SLAB THICKNESS DIMENSIONS ARE MINIMUM. ANY TOLERANCES NECESSARY TO CORRECT CONSTRUCTION DISCREPANCIES ARE TO BE PLUS (+).
ALTERNATE TOP TRANSVERSE BARS IN SLAB SHALL BE SUPPORTED BY INDIVIDUAL BAR CHAIRS AT APPROXIMATELY 3'-0" CENTERS. BOTTOM LONGITUDINAL BARS SHALL BE SUPPORTED BY CONTINUOUS BAR CHAIRS AT APPROXIMATELY 4'-0" CENTERS.

BILL OF BARS COATED 1020 LBS. UNCOATED 3870 LBS.

MARK	NO. REQ'D.	LENGTH	BENT	LOCATION
COATED	UN-COATED			
S501	56	3-6	X	DIAPHRAGM @ ABUTS. - LONGIT.
S502	56	2-7	X	" " " " - VERT.
S803	30	23-8		SLAB BOTTOM - LONGIT.
S704	29	17-10		" " " " - " "
S505	21	27-8		" " " " - TRANS.
S406	6	27-8		" " " " @ ABUT. - " "
S407	17	27-8		" " " " TOP - " "
S408	20	23-8		" " " " - LONGIT.
S609	8	12-0	X	" " @ RAIL POST, ONE PER POST
S610	8	4-0		" " " " TWO - " "
S611	8	4-0	X	" " " " CORNER POSTS AS NOTED

DIMENSIONS IN BENDING DETAILS ARE OUT TO OUT OF BAR.



No.	Date	Revision	By
STATE OF WISCONSIN DEPARTMENT OF TRANSPORTATION DIVISION OF HIGHWAYS			
STRUCTURE B-35-108			
Const. Spec.	W "89"	Drawn By RLR	Plans Checked PAC
SUPERSTRUCTURE			SHEET 6 OF 7
X82780			