

F.F. - FRONT FACE

B.F. - BACK FACE

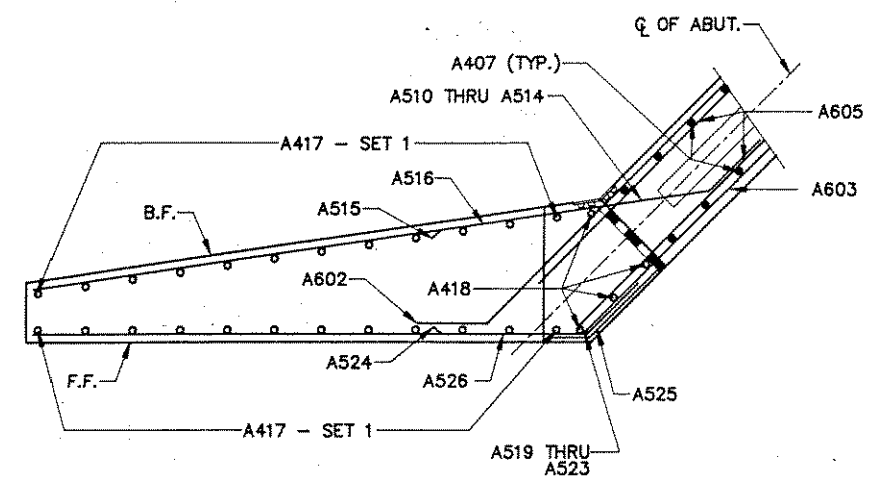
ELEVATION

BILL OF BARS (2 ABUTMENTS)

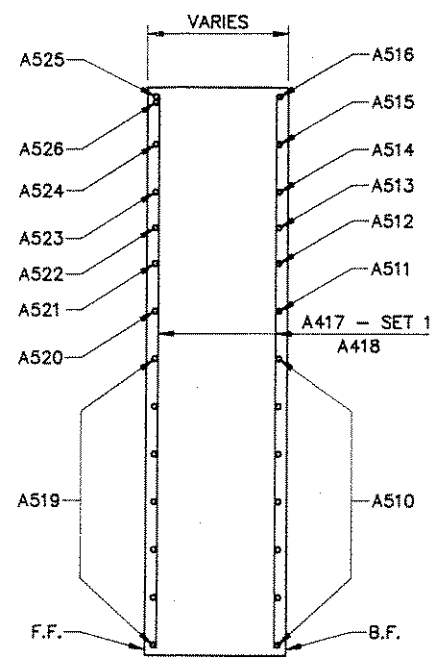
6440 LBS.

MARK	NO. REQ'D	LENGTH	BENT	CUT. DIAGR.	LOCATION
A601	22	10-11			BODY - B.F. - HORIZ. CENTER
A602	44	16-8	X		& WING - - -
A603	22	32-4			- F.F. - -
A404	96	2-3	X		- TIES - -
A605	4	32-4			- TOP - -
A506	56	5-4	X		- BOTTOM - VERT.
A407	112	9-8			- F.F. & B.F. - -
A408	56	8-1	X		- TIES TOP - -
A509	56	2-0			- DOWELS - -
A510	28	16-3	X		WINGS - ALL - B.F. - HORIZ.
A511	4	15-11	X		- - -
A512	4	13-7	X		- - -
A513	4	11-10	X		- - -
A514	4	10-0	X		- - -
A515	4	3-5			- - -
A516	4	12-11	X		- - - TOP
A417	48	18-7		X	- F.F. & - VERT.
A418	16	11-7			- - -
A519	28	13-3	X		- - - HORIZ.
A520	4	12-11	X		- - -
A521	4	10-7	X		- - -
A522	4	8-10	X		- - -
A523	4	7-1	X		- - -
A524	4	5-2	X		- - -
A525	4	3-0	X		- TOP
A526	4	12-9	X		- - -

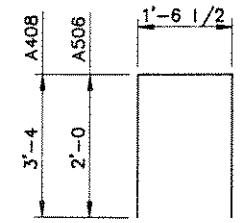
DIMENSIONS IN BENDING DETAILS ARE OUT TO OUT OF BAR.



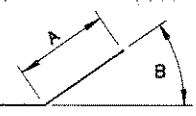
PLAN



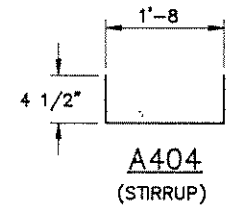
SECTION A-A THRU WINGS



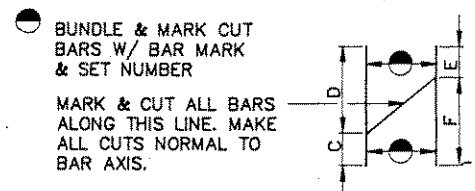
A506, A408



MARK	A	B
A602 A519 THRU A523	1'-6	45°
A510 THRU A514	1'-6	37°
A516	1'-4	23°
A524	2'-0	45°
A525	1'-0	45°
A526	1'-2	23°



A404 (STIRRUP)



CUTTING DIAGRAM

MARK	C	D	E	F	NO. OF BARS/SET	SETS REQ'D
A417 SET 1	7'-0	11'-7	7'-0	11'-7	12	8

No.	Date	Revision	By
STATE OF WISCONSIN DEPARTMENT OF TRANSPORTATION DIVISION OF HIGHWAYS			
STRUCTURE		B-35-108	
Const. Spec.	WI "89"	Drawn By	Plans Checked
		RLR	PAC
ABUTMENT DETAILS		SHEET 5 OF 7	
		X82780	