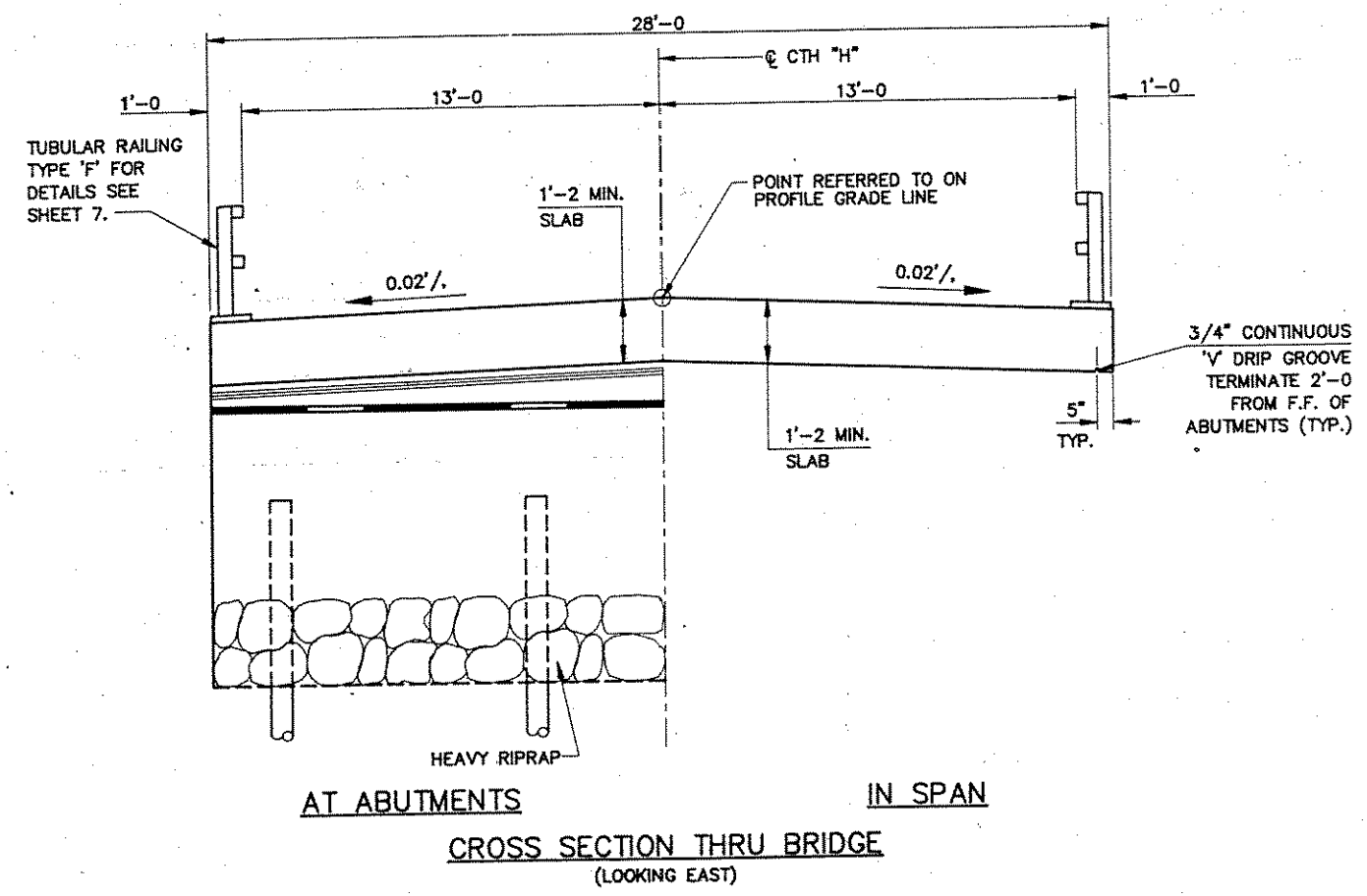


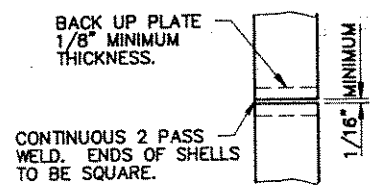
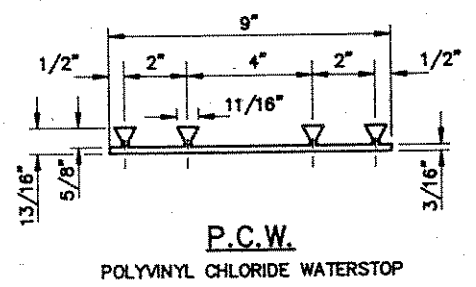
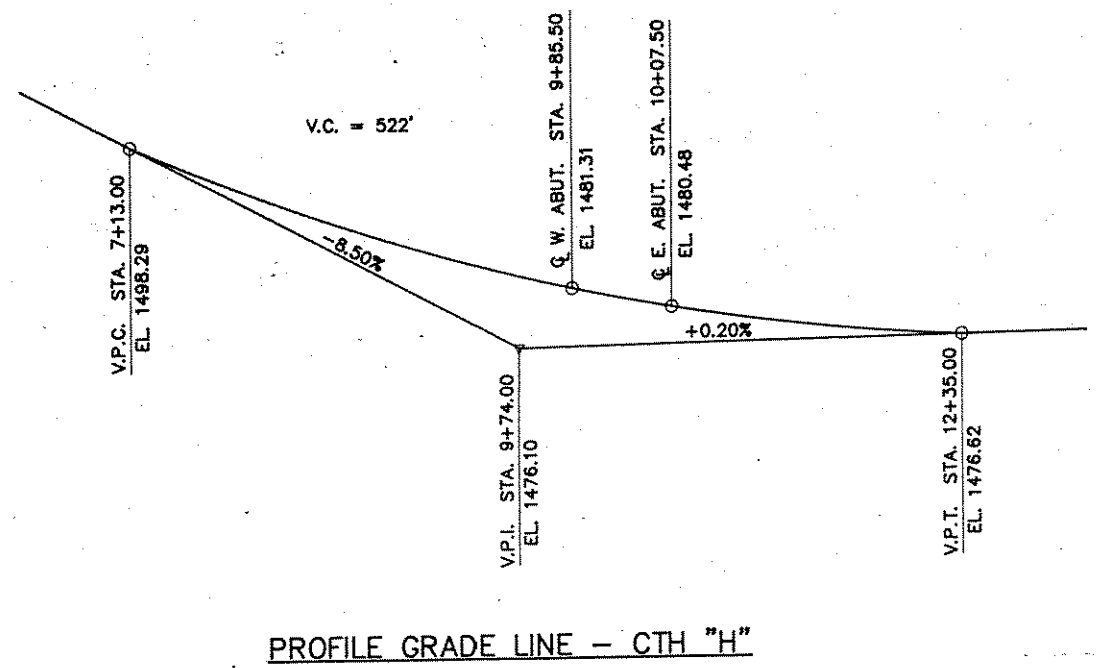
TOTAL ESTIMATED QUANTITIES

BID ITEMS	UNIT	WEST ABUT.	EAST ABUT.	SUPER	TOTAL
REMOVING OLD BRIDGE, STATION 10+00	L.S.				1
EXCAVATION FOR STRUCTURES, BRIDGES B-35-108	L.S.				1
CONCRETE MASONRY, BRIDGES	C.Y.	42.0	42.0	33.0	117
PROTECTIVE SURFACE TREATMENT	GAL.			3	3
HIGH-STRENGTH BAR STEEL REINFORCEMENT, BRIDGES	LB.	3220	3220	3870	10310
COATED HIGH-STRENGTH BAR STEEL REINFORCEMENT, BRIDGES	LB.			1020	1020
CAST-IN-PLACE CONCRETE PILING, DELIVERED AND DRIVEN, 10 3/4 INCH	L.F.	390	390		780
TUBULAR RAILING, TYPE "F", STRUCTURE B-35-108	L.S.				1
HEAVY RIPRAP	C.Y.	60	40		100
GEOTEXTILE FABRIC, TYPE "HR"	S.Y.	110	80		190
NON-BID ITEMS					
FILLER	SIZE				1/2" & 3/4"
POLYVINYL CHLORIDE WATERSTOP	L.F.	32	32		64



GENERAL NOTES

DRAWINGS SHALL NOT BE SCALED.
 BAR STEEL REINFORCEMENT SHALL BE EMBEDDED 2" CLEAR UNLESS SHOWN OR NOTED OTHERWISE.
 THE FIRST DIGIT OF A THREE DIGIT BAR MARK SIGNIFIES THE BAR SIZE.
 FILLER SHALL CONFORM TO AASHTO DESIGNATIONS M153, TYPE I, II, OR III, OR AASHTO DESIGNATION M213.
 THE SLOPE OF THE FILL IN FRONT OF THE ABUTMENTS SHALL BE COVERED WITH HEAVY RIPRAP TO THE LIMITS SHOWN ON SHEET 1 AND ON THE ABUTMENT SHEETS OR AS DIRECTED BY THE ENGINEER.
 THE EXISTING GROUNDLINE SHALL BE THE UPPER LIMITS OF "EXCAVATION FOR STRUCTURES" FOR THE ABUTMENTS.
 SLAB FALSEWORK SHALL BE SUPPORTED ON PILES, UNLESS AN ALTERNATE METHOD IS APPROVED BY THE ENGINEER.
 THIS STRUCTURE WILL REPLACE EXISTING BRIDGE, P-35-0914, A 24 FT. LONG SINGLE SPAN CONCRETE DECK GIRDER BRIDGE.
 BACKFILL 2'-0" ABOVE THE BOTTOM OF ABUTMENT ELEVATIONS SHALL NOT BE PLACED UNTIL THE SUPERSTRUCTURE IS IN PLACE.



PILE SPICE DETAILS

No.	Date	Revision	By
STATE OF WISCONSIN DEPARTMENT OF TRANSPORTATION DIVISION OF HIGHWAYS			
STRUCTURE B-35-108			
Const. Spec. WI "89"	Drawn By RLR	Plans Checked PAC	
CROSS SECTION & QUANTITIES			SHEET 2 OF 7
			X82780