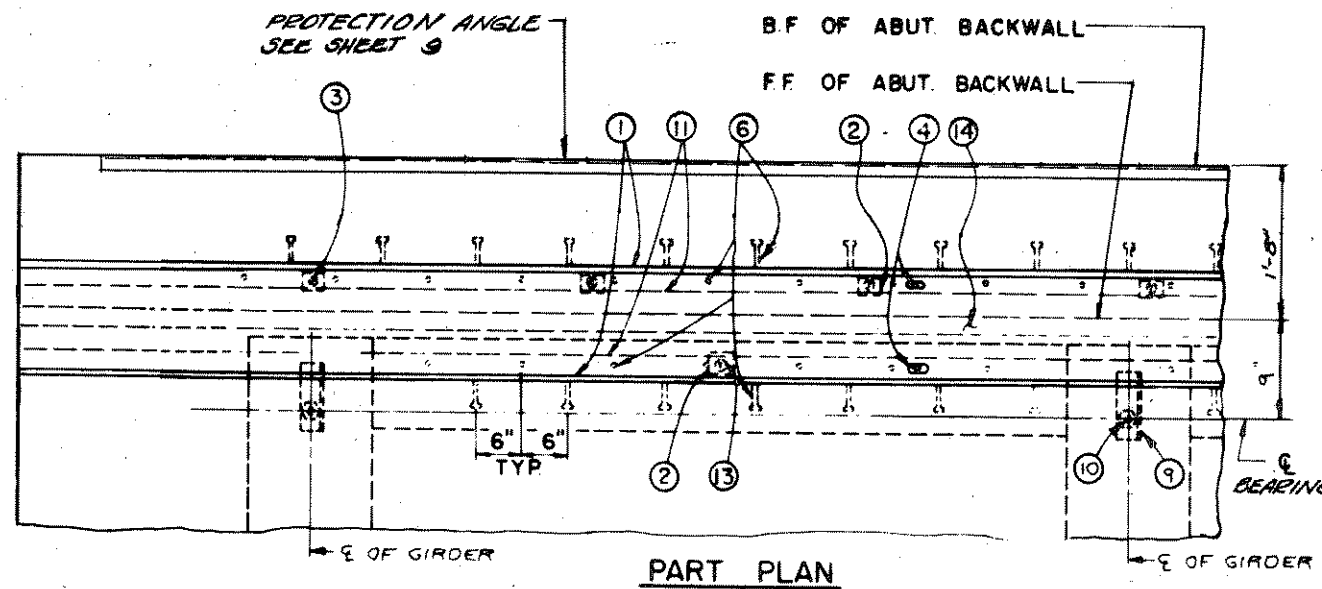


**ANCHORAGE DETAILS**  
(ROADWAY SECTION)

SHADED UNDERSIDE  
DECK TEMPERATURE  
JOINT OPENING

|     |        |
|-----|--------|
| 90° | 1 5/16 |
| 80° | 1 3/8  |
| 70° | 1 1/2  |
| 60° | 1 5/8  |
| 50° | 1 3/4  |
| 40° | 1 5/8  |
| 30° | 2 1/8  |

**▲ TEMPERATURE TABLE**



**PART PLAN**

**LEGEND**

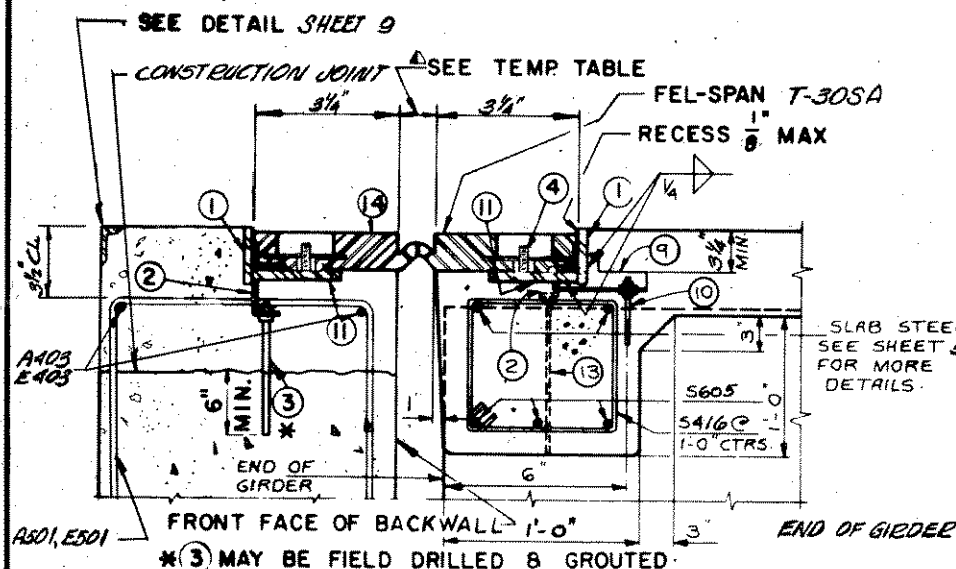
1. BAR 2 1/2" x 3/8" BUILD TO CONFORM TO ROADWAY CROWN.
2. L 3" x 2 1/2" x 3/8" x 3" LONG. PLACE MIDWAY BETWEEN GIRDERS AND AT 3'-0" CENTERS ON ABUTMENT SIDE. IF NECESSARY TURN L 180°. WELD TO NO. 11. PROVIDE 1/8" HOLE IN 2 1/2" LEG FOR NO. 3 & 13.
3. 3/8" ROD, W/2 STD. NUTS & WASHERS, THREAD 4".
4. THREADED STUDS PROVIDED BY MANUF. WELD TO NO. 11.
6. 1/2" x 0'-6" STUDS AT 0'-6" ALTERNATE CENTERS. BEND AFTER WELDING TO NO. 1.
9. ANGLE 4" x 3" x 3/8" WITH 1 1/2" DIA. HOLE FOR NO. 10 IN 4" LEG.
10. 3/4" DIA. EXPANSION BOLT WITH 2 NUTS AND 2 WASHERS, FIELD SET ON 1/2" OF GIRDER TO A MIN. DEPTH OF 0'-4".
11. BAR 3/8" x 2 1/2", WELD TO NO. 1.
13. 3/8" ROD, THREAD 4" WELD NUT TO NO. 2.
14. FEL-SPAN MODEL T-305A FOR EXP. MOVEMENT OF 3" OR LESS.

APPLY SEALANT ALONG BOTTOM AND SIDES OF TROUGH AS RECOMMENDED BY MANUFACTURER PRIOR TO PLACING EXPANSION DEVICE. CONCRETE MUST BE FREE OF ALL DEBRIS.

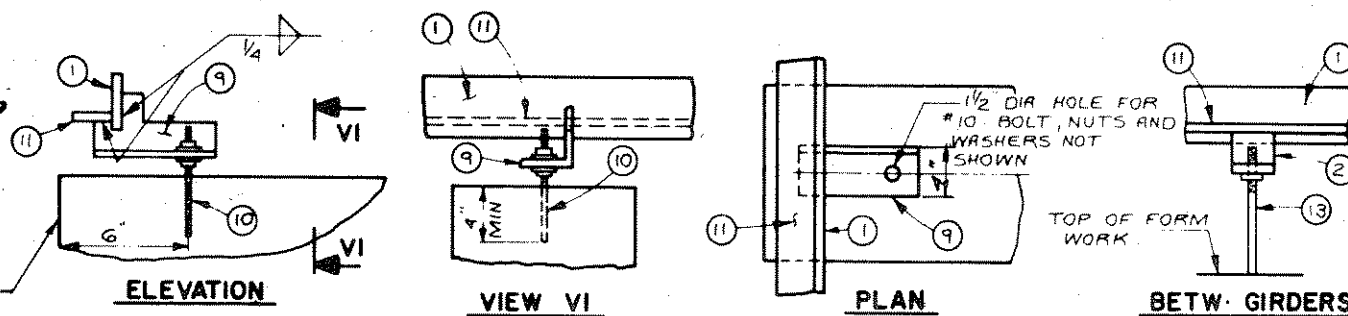
EACH STUD NO. 4 SHALL HAVE A WASHER AND HEX NUT OR TORQUE NUT. TIGHTEN ALL NUTS TO MANUFACTURERS RECOMMENDED TORQUE.

CLEAN BOLT HOLE CAVITY AND FILL CAVITY DEPTH WITH SEALANT AND/OR BOLT HOLE PLUG. CLEAN EXCESS SEALANT FROM SURFACE.

ELASTOMERIC JOINT ASSEMBLY, INCLUDING ANCHORAGE ARMOR AND HARDWARE WILL BE PAID FOR AT THE LUMP SUM PRICE FOR "EXPANSION DEVICE".



**TYPICAL SECTION THRU JOINT AT PRESTRESSED GIRDER**



**SEATING ADJUSTMENT AT GIRDERS**

| No.  | Date | Revision | By             |
|--|------|----------|----------------|
| STATE OF WISCONSIN<br>DEPARTMENT OF TRANSPORTATION<br>DIVISION OF HIGHWAYS |      |          |                |
| <b>STRUCTURE B-35-75</b>   |      |          |                |
| Const. Spec.   | 1975 | Drawn By | Plans Checked  |
|  |      | GRK      | GRK            |
| ELASTOMERIC EXPANSION DEVICE   |      |          | SHEET 12 OF 13 |
|  |      |          | X58171         |