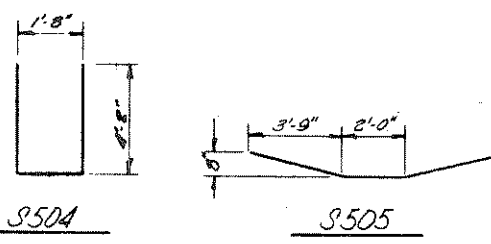
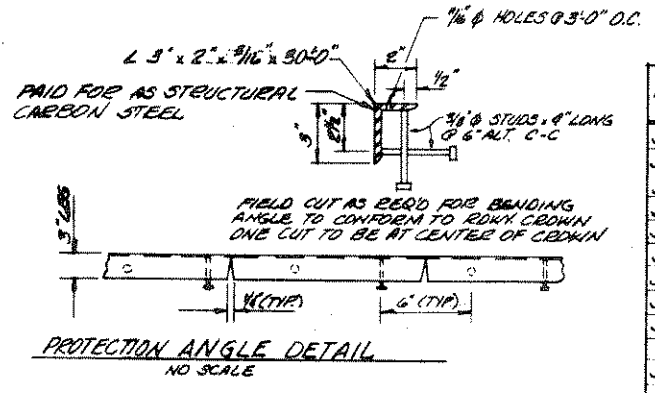


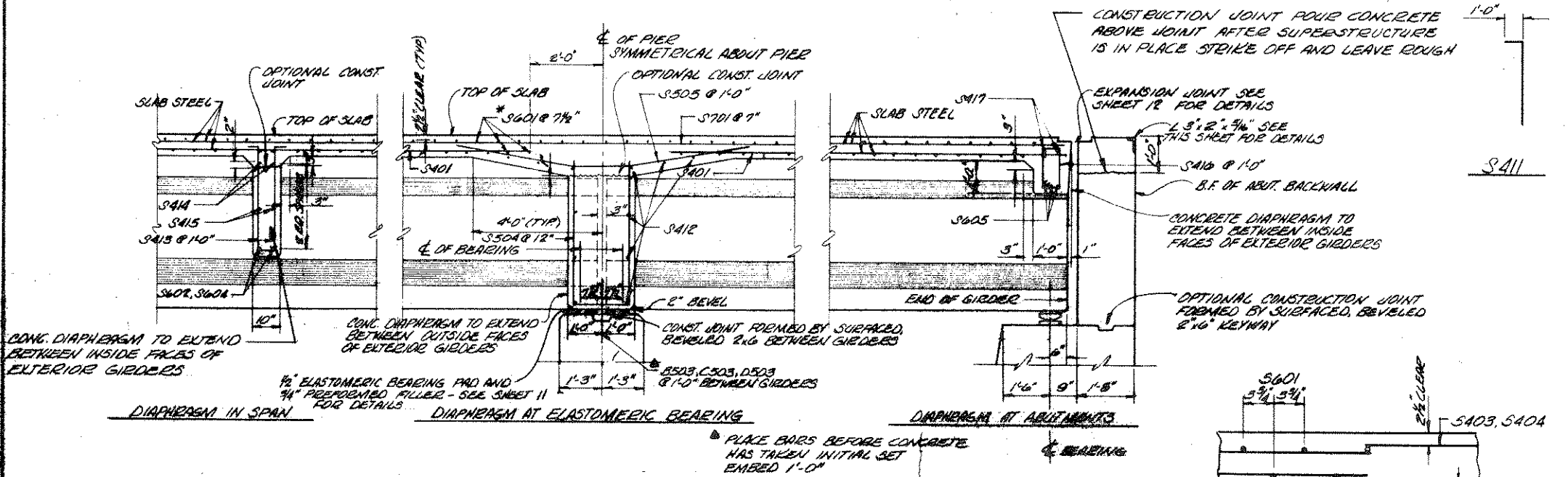
CROSS SECTION THRU ROADWAY
SCALE: 3/8" = 1'-0"

NOTE:
DIMENSIONS IN BENDING DETAILS ARE OUT-TO-OUT. THE FIRST DIGIT OF A THREE DIGIT MARK AND THE FIRST TWO DIGITS OF A FOUR DIGIT MARK SIGNIFIES THE BAR SIZE.



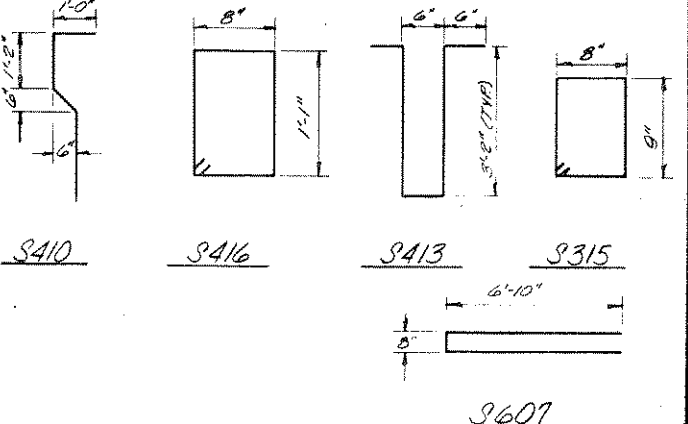
BILL OF BARS 98,175 LBS.

MARK	NO	REQD	LENGTH	BENT	LOCATION
S601	1140		31'-7"		SLAB - TOP & BOTTOM TRANS.
S701	165		43'-0"		SLAB - TOP SYM. @ PIERS LONGIT.
S803	180		48'-0"		SLAB - TOP LONGIT.
S804	60		27'-1"		SLAB - TOP LONGIT.
S401	704		30'-0"		SLAB - BOTTOM LONGIT.
S402	128		18'-5"		SLAB - BOTTOM LONGIT.
S410	12		4'-5"	✓	PILASTER - PIERS VERTICAL
S411	12		5'-7"	✓	PILASTER - PIERS VERTICAL
S515	18		3'-4"	✓	PILASTER - PIERS HORIZ.
S504	63		9'-9"	✓	PILASTER - PIERS VERTICAL
S412	108		8'-4"		PILASTER - PIERS HORIZ.
S505	63		9'-8"	✓	DIAPHRAGM - PIERS HORIZ.
S413	192		7'-6"	✓	DIAPHRAGM - SPAN VERTICAL
S602	32		3'-2"		DIAPHRAGM - SPAN HORIZ.
S603	32		6'-2"		DIAPHRAGM - SPAN HORIZ.
S604	48		8'-4"		DIAPHRAGM - SPAN HORIZ.
S414	48		7'-4"		DIAPHRAGM - SPAN HORIZ.
S415	48		8'-4"		DIAPHRAGM - SPAN HORIZ.
S605	18		7'-4"		DIAPHRAGM - ABUTMENT HORIZ.
S416	48		4'-0"	✓	DIAPHRAGM - ABUTMENT VERTICAL
S417	12		7'-4"		DIAPHRAGM - ABUTMENT HORIZ.
S606	188		4'-0"		AT RAIL POSTS HORIZ.
S607	94		14'-0"	✓	SLAB - AT RAIL POSTS HORIZ.
S418	104		28'-3"		SLAB - TOP AND BOTTOM HORIZ.



PARTIAL LONGITUDINAL SECTION
SCALE: 1/2" = 1'-0"

SECTION THRU SLAB
TYPICAL LONGITUDINAL SECTION AT MIDSPAN



BAR CHAIR NOTES

BOTTOM TRANSVERSE BARS IN SLAB SHALL BE SUPPORTED BY CONTINUOUS BAR CHAIRS ON OR ADJACENT TO EACH GIRDER AND BY INDIVIDUAL BAR CHAIRS PLACED AT 3'-0" CENTERS AT APPROXIMATELY 1/3 POINTS BETWEEN GIRDERS.

TOP LONGITUDINAL BAR STEEL SHALL BE SUPPORTED BY CONTINUOUS BAR CHAIRS AT APPROXIMATELY 4'-0" CENTERS.

No.	Date	Revision	By
STATE OF WISCONSIN DEPARTMENT OF TRANSPORTATION DIVISION OF HIGHWAYS			
STRUCTURE B-35-75			
Const. Date	Drawn By	Checked By	Scale
1975	EGK	SEK	
SUPERSTRUCTURE DETAILS			SHEET 9 OF 13 X58168